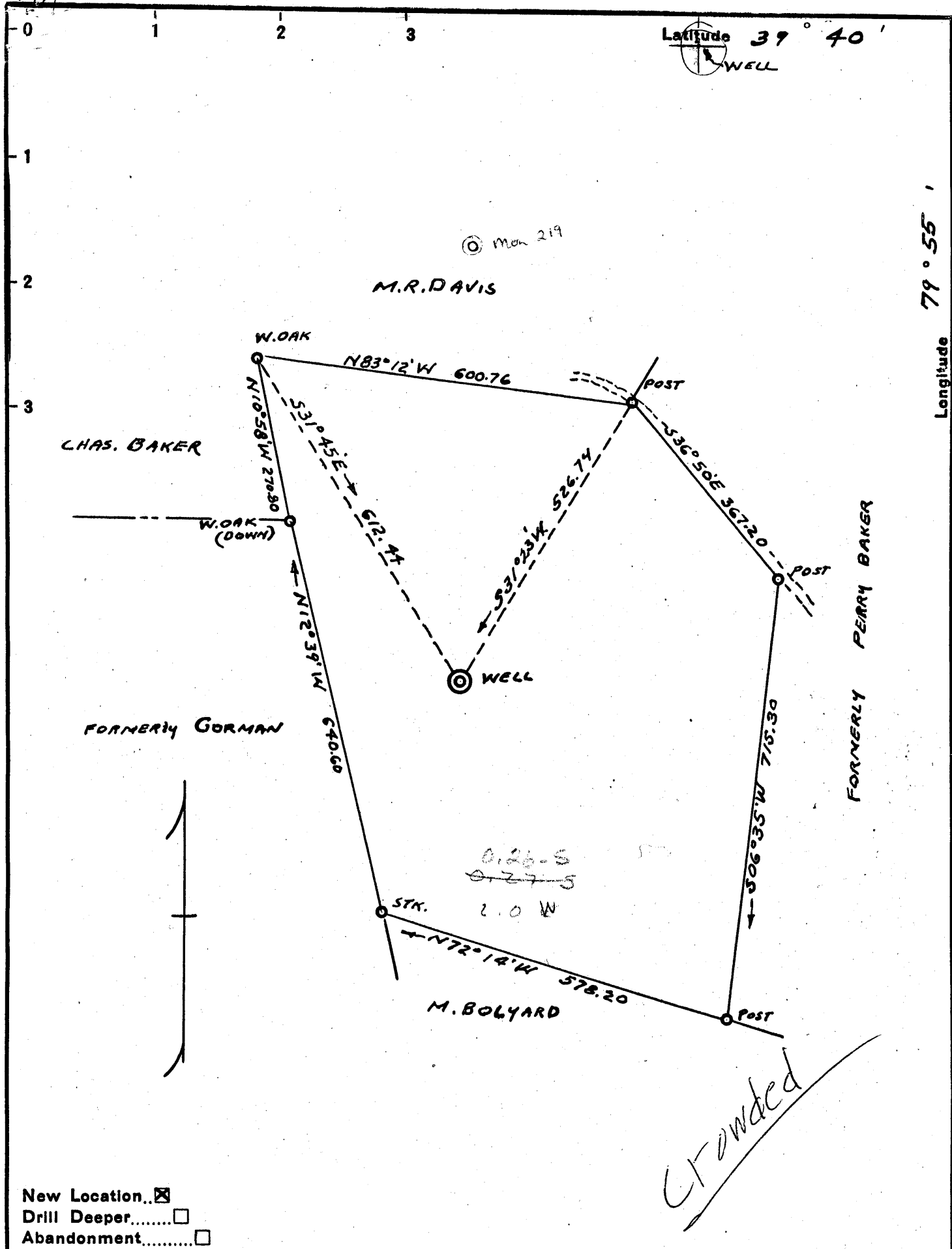




Latitude 39° 40'



Longitude 79° 55'



- New Location...
- Drill Deeper.....
- Abandonment.....

Company	<u>MR DAVIS &amp; EMMETT LYNCH</u>
Address	<u>STAR CITY, WEST VA.</u>
Farm	<u>V.E. MAZZOCCO</u>
Tract	Acres <u>14.11</u> Lease No. _____
Well (Farm) No.	<u>ONE</u> Serial No. _____
Elevation (Spirit Level)	<u>1137.52</u>
Quadrangle	<u>MORGANTOWN WC.</u>
County	<u>MONONGALIA</u> District <u>MORGAN</u>
Engineer	<u>RALPH E. BAKER</u>
Engineer's Registration No.	<u>441</u>
File No.	<u>2-19D-207</u> Drawing No: <u>8557</u>
Date	<u>APRIL 10, 1956</u> Scale <u>1" = 200'</u>

STATE OF WEST VIRGINIA  
DEPARTMENT OF MINES  
OIL AND GAS DIVISION  
CHARLESTON

**WELL LOCATION MAP**  
FILE NO. MON-223

+ Denotes location of well on United States Topographic Maps, scale 1 to 62,500, latitude and longitude lines being represented by border lines as shown.

- Denotes one inch spaces on border line of original tracing.

068

STATE OF WEST VIRGINIA  
DEPARTMENT OF MINES  
OIL AND GAS DIVISION 2

## WELL RECORD

Morgantown Quadrangle  
Permit No. MON-223

Oil or Gas Well \_\_\_\_\_ Gas? \_\_\_\_\_  
(KIND)

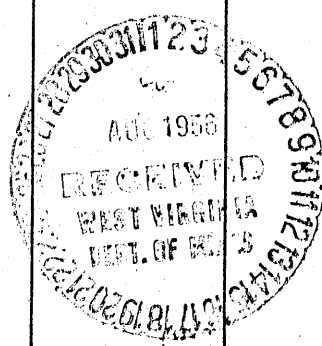
Company M. R. Davis & R. Emmett Lynch  
Address Box 182 - Star City, W. Va.  
Farm V. E. Mazzocco Acres 14 plus  
Location (waters) West Run  
Well No. 1 Elev. 1137.52'  
District Morgan County Monongalia  
The surface of tract is owned in fee by V. E. Mozzacco  
RFD #4 - Morgantown, W. Va.  
Mineral rights are owned by Same  
Address \_\_\_\_\_  
Drilling commenced 4/13/56  
Drilling completed 6/12/56  
Date Shot 6/15/56 From 1815 To 1835'  
With Nitroglycerine  
Open Flow 16 /10ths Water in One Inch  
/10ths Merc. in \_\_\_\_\_ Inch  
Volume 42.16 M Cu. Ft.  
Rock Pressure 450 lbs. hrs.  
Oil none bbls., 1st 24 hrs.  
Fresh water 827 feet feet  
Salt water none feet feet

Casing and Tubing	Used in Drilling	Left in Well	Packers
Size			
16			Kind of Packer
18			
10	21'	21'	Size of
8 1/4			
6 3/4	1251'	1251'	Depth set
5 3/16			
3			Perf. top
2			Perf. bottom
Liners Used			Perf. top
			Perf. bottom

CASING CEMENTED \_\_\_\_\_ SIZE \_\_\_\_\_ No. Ft. \_\_\_\_\_ Date \_\_\_\_\_

COAL WAS ENCOUNTERED AT \_\_\_\_\_ FEET \_\_\_\_\_ INCHES  
\_\_\_\_\_ FEET \_\_\_\_\_ INCHES FEET \_\_\_\_\_ INCHES  
\_\_\_\_\_ FEET \_\_\_\_\_ INCHES FEET \_\_\_\_\_ INCHES

Formation	Color	Hard or Soft	Top	Bottom	Oil, Gas or Water	Depth Found	Remarks
Sand			0	20	P		
Lime			20	85			
Red Rock			85	95			
Slate			95	112			
Lime			112	180			
Red Rock			180	185			
Lime	Gray		185	255			
Red Rock			255	270			
Slate and Shells			270	288			
Gray Lime			288	348			
Red Rock			348	355			
Sand - Dark-Soft			355	409			
Slate and Shells			409	428			
Sand - Gray - Hard			428	474			
Slate			474	480			
Lime - Gray - Hard			480	520			
COAL		Soft	520	525			
Slate and Lime			525	570			
Slate - Dark - Soft			570	580			
Lime - Gray - Hard			580	624			
Sand			624	661			
Slate			661	663			
Lime - Gra - Hard			663	680			
Sand			680	700			
Slate - Dark			700	705			
Sand			705	714			
Slate - Dark			714	716			
Sand - Gray - Hard			716	724			
Slate & Shells - Soft			724	780			
Sand - Gray		water 827	780	910			Water 827-845'
Reduced Hosl.			853				
Slate			910	942			Hole full of water 860'
Lime - Gray - Hard			942	958			
Slate - Dark - Soft			958	990			
Lime - Gray - Hard			900	1008			
Red Rock			1008	1012			
Lime - Gray - Hard			1012	1060			
Sand	White	Hard	1060	1075	(Over)		



Formation	Color	Hard or Soft	Top 2	Bottom	Oil, Gas or Water	Depth Found	Remarks
Slate and Shells			1075	1144			
Red Rock			1144	1158			
Lime - Gray			1158	1183			
Slate			1183	1193			
Red Rock			1193	1195			
Lime - White - Hard			1195	1296			
Slate - Pink			1296	k1302			Bottom of 8" hole (1224')
Lime			1302	1310			
BIG INJUN - White		Hard 391	1310	1414			
Lime - Gray - Hard			1414	1418			
Squaw Sand			1418	1432			
Slate			1432	1445			
Lime			1445	1496			
Sand			1496	1586			
Slate & Shells			1586	1690			
Lime - Gray - Hard			1690	1705			
Slate & Shells - Dark			1705	1725			
Sand - Dark			1725	1735			
Slate & Shells			1735	1746			
Gantz Sand - Gray - Hard			1746	1766			
Slate & Shells			1766	1815			
Sand - Gray - Medium		50'	1815	1845			Gas 1816-1825' - Test 5/28/56, 16/10ths in 1"
Slate - Dark - Soft			1845	1848			
Lime & Sand - White - Hard			1848	1879			
Sand		30'?	1879	1975			
Lime - Gritty			1975	1995			
Slate			1995	2005			
Lime - White - Hard			2005	2015			
Red Rock			2015	2015			
Slate & Lime			2015	2045			
Sand		Gordon Stray?	2045	2052			
Slate & Shells			2052	2068			
Red Rock			2068	2072			
Lime - Gritty - Gray			2072	k2084			
Red Rock			2084	2094			
Slate & Shells			2094	2200			
Sand		Gordon?	2200	2220			
Slate & Shells			2220	2252			
Sand		4th?	2252	2270			
Slate & Shells			2270	2278			
Lime - Gritty - Black			2278	2290			
Slate - Dark			2290	2297			
FIFTH SAND			2297	2345			
Slate - Gray - Soft			2345	2358			
Sand Bayard?			2358	2404			
Elizabeth Sand - White - Hard			2404	2436			
Total Depth				2442			- Plugged well to depth to 1835' - shot Well 1815' - 1835' - June 12, 1956 Test 5/10ths W. on 1" - 23,000

Date \_\_\_\_\_, 19\_\_

APPROVED \_\_\_\_\_, Owner