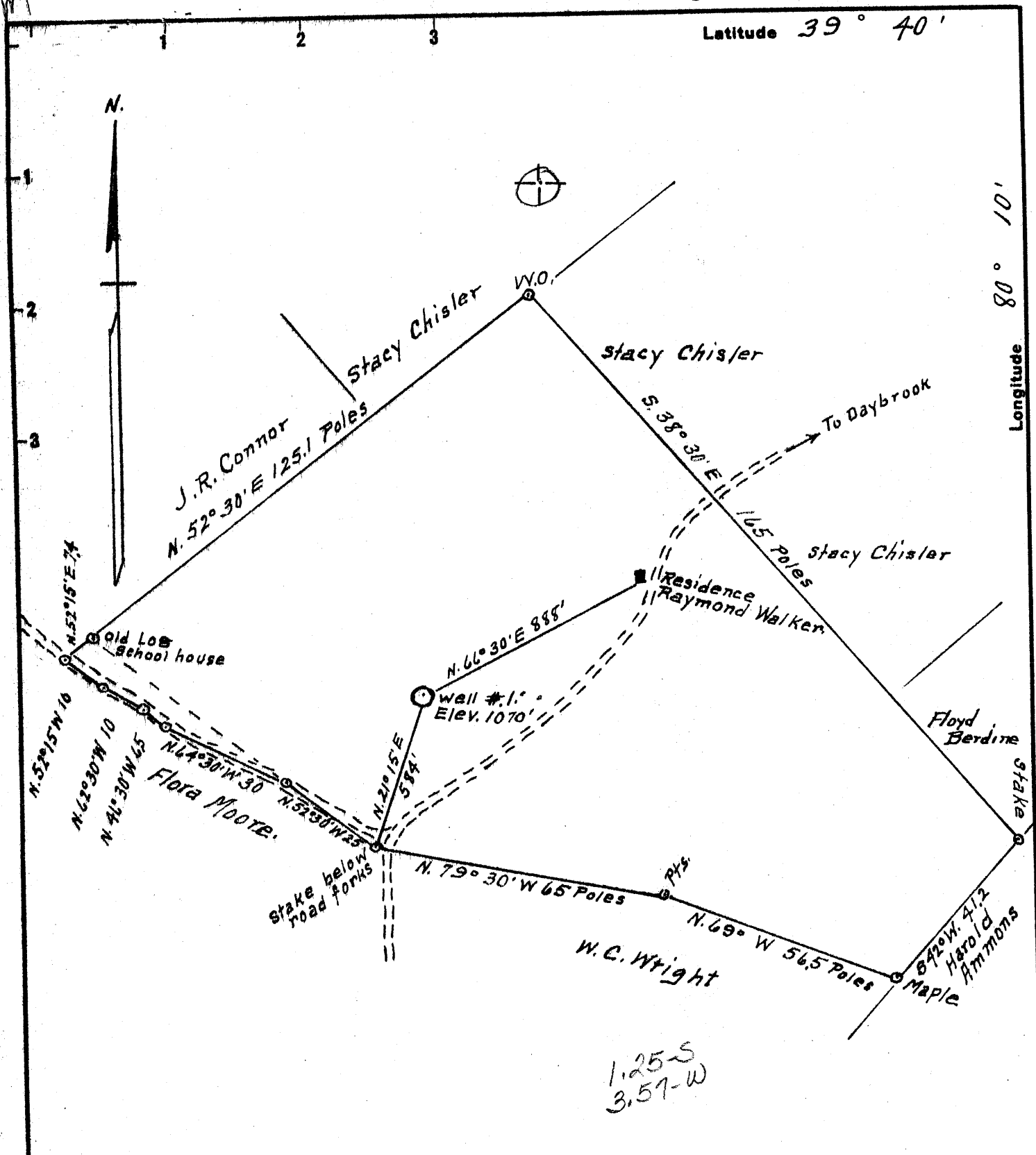


Latitude 39° 40'



1.25 S  
3.57 W

Surface = Tracy Chisler  
R. #.2. Fairview, W.Va.

Coal = ~~Jamison Coal & Coke Co~~  
~~119 North Main St.~~  
~~Greensburg, Pa.~~

WHEELING DOLLAR SAVINGS & TRUST CO  
WHEELING, W. VA.

New Location   
Drill Deeper   
Abandonment  11-27-67

Company D.K. Moore  
~~Frank Chisler & Truman Smith~~  
Address Box 43, Hundred, W.Va.  
Farm Tracy Chisler  
Tract 1 Acres 102 Lease No. \_\_\_\_\_  
Well (Farm) No. 1 Serial No. \_\_\_\_\_  
Elevation (Spirit Level) 1070'  
Quadrangle Blacksville Wc  
County Monongalia District Clay  
Engineer A.L. Headley  
Engineer's Registration No. 2021  
File No. \_\_\_\_\_ Drawing No. \_\_\_\_\_  
Date 12-14-1953 Scale 1" = 500'

STATE OF WEST VIRGINIA  
DEPARTMENT OF MINES  
OIL AND GAS DIVISION  
CHARLESTON

WELL LOCATION MAP  
FILE NO. MON-209P

+ Denotes location of well on United States Topographic Maps, scale 1 to 62,500, latitude and longitude lines being represented by border lines as shown.

- Denotes one inch spaces on border line of original tracing.

5-6-66

STATE OF WEST VIRGINIA  
DEPARTMENT OF MINES  
OIL AND GAS DIVISION 5

Quadrangle Blacksville

## WELL RECORD

Permit No. 7122-209

Oil or Gas Well Oil  
(KIND)

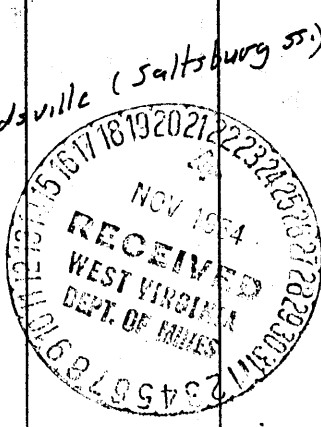
Company F. M. Chisler  
Address Route # 2, Fairview, W. Va.  
Farm Tracy Chisler Acres 95  
Location (waters) Day's Run  
Well No. 1 Elev. 1070'  
District Clay County Monongalia  
The surface of tract is owned in fee by Tracy Chisler  
Address R2, Fairview  
Mineral rights are owned by R.F. and Tracy Chisler  
Address \_\_\_\_\_  
Drilling commenced January 4, 1954  
Drilling completed May 3, 1954  
Date Shot May 8, '54 From 3136' To 3140'  
With 10 qts. Glycerene  
Open Flow /10ths Water in 8/10 on 1" Inch  
/10ths Merc. in 30M Inch  
Volume About 8000 Cu. Ft.  
Rock Pressure No Test lbs. \_\_\_\_\_ hrs.  
Oil Filled up 350' bbls., 1st 24 hrs.  
Fresh water None feet \_\_\_\_\_ feet  
Salt water None feet \_\_\_\_\_ feet

Casing and Tubing	Used in Drilling	Left in Well	Packers
Size			Kind of Packer
16 13"	280'	240'	
13			
10	750'	Pulled	Size of _____
8 1/4	1653'	yes	
6 5/8	1843'	yes	Depth set shoe
5 3/16	2995'	yes	
3 none			Perf. top _____
2	3150'	Yes	Perf. bottom _____
Liners Used			Perf. top _____
			Perf. bottom _____

CASING CEMENTED \_\_\_\_\_ SIZE \_\_\_\_\_ No. Ft. \_\_\_\_\_ Date \_\_\_\_\_

COAL WAS ENCOUNTERED AT 368' to 371' FEET INCHES  
630' to 36' FEET INCHES 732' to 740' FEET INCHES  
1485' to 1487' FEET INCHES FEET INCHES

Formation	Color	Hard or Soft	Top	Bottom	Oil, Gas or Water	Depth Found	Remarks
Surface 35'	Shale						
35' to 76'	Lime					63'	Hole full of water
76' to 100'	Shale						
100' to 120'	Lime						
120' " 180'	<del>lime</del> Shale						
180' " 185'	Red Rock						
185' " 210'	Lime						Hole full of Water at 20'
210' " 300'	Lime						
307' " 368'	Sand	Bluff					
368' " 371'	Coal	Fairview					
371' " 400'	Lime	Hard					
400' " 415'	Shale						
415' " 440'	Lime						
440' " 465'	Slate						
465' " 620'	Lime						
620' " 630'	Slate						
630' " 636'	Coal	Mapletown					
636' " 720'	Lime						
732' " 740'	Coal	Pittsburgh					
740' " 820'	Lime						
820' " 838'	Dark Slate						
838' " 850'	Lime						
850' " 860'	Red rock						
860' " 905'	Shelly Lime						
905' " 930'	Redrock soft						
930' " 1070'	Slate--Used Cement						
1075' -1105'	Little Dunkard Sand?						
1105' -1120'	Slate-Soft						
1120' -1175'	Lime						
1175' -1205'	Slate Dark						
1205' -1252'	Lime-Hard						
1252' -1285'	Sand	Dunkard					
1285' -1310'	Slate						
1310' -1330'	Lime						
1330' -1335'	Slate						



(Over)

Formation	Color	Hard or Soft	Top	Bottom	Oil, Gas or Water	Depth Found	Remarks
		Lime				1335'	1400'
		Slate				1400'	1455'
		Sand				1455'	1485'
		Coal				1485'	1487'
		Slate				1487'	1500'
		Lime				1500'	1515'
		Slate				1515'	1520'
		Sand 1st salt				1520'	1570'
		Slate				1570'	1626'
8 1/2" casing 002" " 050' 000" " 200' 200'						1653	
		2nd slat sand (hole full water at			1665')	1626'	to 1732'
		slate				1732'	to 1785'
		Lime white-Hard				1785'	to 1793'
		Redrock				1793'	to 1795'
		Slate				1795'	to 1805'
		Redrock				1805'	to 1812'
		Shells				1812'	to 1863'
6 5/8 casing		Lime				1863'	to 1882'
		Redrock				1882'	to 1884'
		Lime				1884'	to 1890'
		Slate-Shells				1890'	to 1925'
		Little Lime				1925'	to 1935'
		Slate				1935'	to 1950'
		Slaty Lime				1950'	to 1964'
		Big Lime (At 2125' one bailer				1964'	to 2026'
		Engine Sand salt water in 24 hrs.)				2026'	to 2220'
		Lime				2220'	to 2285'
		Sand Berea Grit				2285'	to 2320'
		Slate and Shells				2320'	to 2512'
		Sand Gantz (Scum of oil at 2518')				2512'	to 2532'
		Slate and Shells				2532'	to 2610'
		50' Sand (Show of gas at 2622)				2610'	to 2625'
		Slate				2625'	to 2655'
		Sand				2655'	to 2712'
		Slate				2712'	to 2720'
		Sand				2720'	to 2755'
		Slate and shells				2755'	to 2805'
		Redrock				2805'	to 2825'
		Slate and shells				2825'	to 2842'
		Sand				2842'	to 2860'
		Slate and shells				2860'	to 2876'
		Sand				2876'	to 2887'
		Slate and shells				2887'	to 2930'
		Sand				2930'	to 2945'
		Slate and shells				2945'	to 2985'
		Sand				2985'	to 3040'
5 3/16 casing		(Steel Shoe)				2995'	
		Slate and Shells				3040'	to 3144'
					Gas & Oil	3134'	to 3138'
		Total Depth				3200'	
		Filled with lime chips back to				3150'	
May 8, 1954, Shot		with 10 cts. Nitro Glycerene		Top		3136'	Bottom 3140'
Well filled up after shot about		350' in 24 hrs.--				1200'	in 6 days.
Tubed with 3150' of 2" Tubing-Put to Pumping Oct. 1, 1954							at about 15 bbl. per week.

Date November 19, 1954

APPROVED \_\_\_\_\_, Owner

By Helen C. Tarrant, clerk