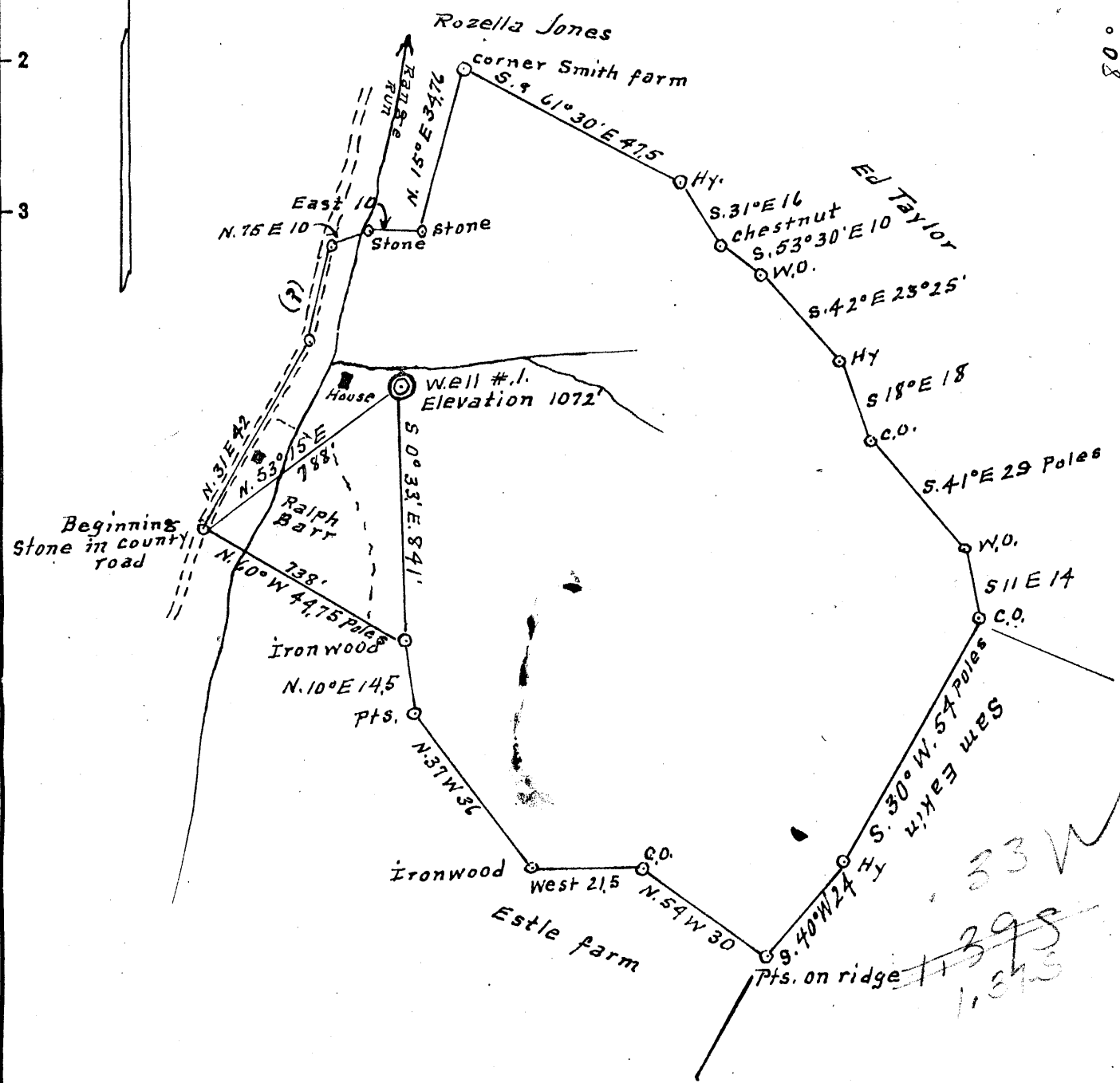


Latitude 39° 40'

Longitude 80° 20'



Surface = Theodore M. Hartley
 411 James St. Mannington, W. Va.
 Coal = Louise Reeder Seeton
 A. E. C. Camp, White Canyon, Utah.

New Location...
 Drill Deeper.....
 Abandonment.....

Company James A. Hughes
 Address 2457 Woodward Ave. Detroit, Mich.
 Farm Theodore M. Hartley
 Tract 1 Acres 93 Lease No. _____
 Well (Farm) No. 1 Serial No. _____
 Elevation (Spirit Level) 1072'
 Quadrangle Mannington
 County Monongalia District Battelle
 Engineer A. L. Headley
 Engineer's Registration No. 2021
 File No. _____ Drawing No. _____
 Date 6-1-1953 Scale 1" = 500'

STATE OF WEST VIRGINIA
 DEPARTMENT OF MINES
 OIL AND GAS DIVISION
 CHARLESTON

WELL LOCATION MAP
 FILE NO. MON-207

+ Denotes location of well on United States Topographic Maps, scale 1 to 62,500, latitude and longitude lines being represented by border lines as shown.

- Denotes one inch spaces on border line of original tracing.

(058)



Mon. 207

STATE OF WEST VIRGINIA
DEPARTMENT OF MINES
OIL AND GAS DIVISION 2

Mannington

WELL RECORD

Permit No. MON-207

Oil or Gas Well Gas
(KIND)

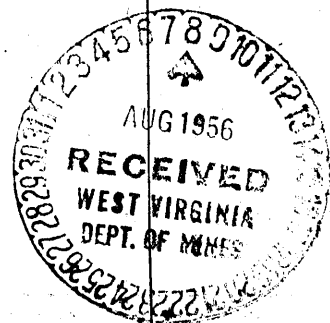
Company James A. Hughes
 Address 2457 Woodward Ave. Detroit, Mich.
 Farm Theodore M. Hartley Acres 90
 Location (waters) Dunkard Creek
 Well No. 1 Elev. 1072'
 District Battelle County Monongalia
 The surface of tract is owned in fee by Theodore M. Hartley
 Address 411 James St. Mannington, W. Va.
 Mineral rights are owned by 1/2 Hartley Heirs - 1/2 So. Penn Natural Gas Co
 Address Mannington & Parkersburg
 Drilling commenced July 27, 1953
 Drilling completed Feb. 7, 1956
 Date Shot None From To
 With
 Open Flow /10ths Water in Inch
 /10ths Merc. in Inch
 Volume 135,000 Cu. Ft.
 Rock Pressure 600 lbs. 24 hrs.
 Oil None bbls., 1st 24 hrs.
 Fresh water 30-37 feet 2285 feet
 Salt water feet feet

Casing and Tubing	Used in Drilling	Left in Well	Packers
Size			Kind of Packer For
16			
13	21'0"	21'0"	2" Tube
	200'0"	200'0"	
10			Size of
8 1/4	1322'0"	1322'0"	
6 3/4	2150'0"	2150'0"	Depth set <u>3184</u>
5 3/16	2325'0"	2325'0"	
3	None		Perf. top
2		3290	Perf. bottom
Liners Used	None		Perf. top
			Perf. bottom

CASING CEMENTED SIZE No. Ft. Date

COAL WAS ENCOUNTERED AT 465 FEET INCHES
539 FEET INCHES 803 FEET INCHES
906 FEET INCHES FEET INCHES

Formation	Color	Hard or Soft	Top	Bottom	Oil, Gas or Water	Depth Found	Remarks
Clay&Gravel	Gray		0	20			
Sandy Shale	Red		20	30			
Sand	Gray		30	37	Water	30	
Sandy Line	Gray	Very Hard	37	42			
Sand&Shale	Gray		42	70			
Shale&Shells	Blue		70	110			
Shale&Lime	Black		110	126			
Sand		Hard	126	128			
Sand			128	140			
Lime	Gray		140	155			
Shale&Sand	Gray	Streaks	180	249			
Shale	Gray		249	289			
Shale&Shell	Gray		289	325			
Shale	Blue		325	343			
Shell		Very Hard	343	350			
Shale	Blue	Soft	350	380			
Slate	Black		380	435			
Lime			435	450			
Shale	Blue		450	465			
Coal	Black		465	470			
Lime&Shale	Blue		470	482			
Lime	Dark		482	539			
Coal-Waynesburg			539	543			
Lime&Shale	Dark		543	590			
SandyLime		Hard	590	615			
Lime&Shale	Black		615	650			
Lime&Shale	Black	Hard	650	654			
Lime			655	680			
Shale	Blue		680	701			
Lime	Gray		701	710			
Shale	Blue		710	715			
Lime	Brown & Gray		715	803			
Coal	Mapletown		803	809			
Shale	Gray		809	835			
Lime	Gray	Hard	835	880			
Slate	Gray		880	890			



Formation	Color	Hard or Soft	Top z	Bottom	Oil, Gas or Water	Depth Found	Remarks
Coal	Pittsburg		906	912			
Shale&Lime Shells		Soft	912	921			
Lime	Blue		921	985			
Red Rock			985	990			
Shale&Shell Sand			990	1011			
Red Rock			1011	1080			
Shale	Blue		1080	1173			
Red Rock			1173	1185			
Shale	Blue		1185	1210			
Red Rock			1210	1215			
Shale	Dark		1215	1247			
Slate&Lime	Black		1247	1272			
Shale	Dark		1277	1300			
Top of Little Dunkard	Dark		1300	1322			
RUN 1322 FT. OF 8" CASING			1322	1334			
Sandy Shale	Dark		1322	1341			
Shale	Black		1341	1371			
BigDunkard DunkardSand (Big)			1371	1403			
Lime&Shale			1403	1437			
Lime	Black		(1417	1437)			
Sand		Soft	1437	1453			
Shale&Shell	Black		1453	1492			
Lime	Gray	Hard	1492	1520			
Shale			1520	1537			
Sand	Gray&White		1537	1570	Gas	1582	
Shale	Black		1570	1582			
Shale	Red		1582	1660			
Shale	Gray		1660	1670			
Shale	Gray	VeryMuddy	1670	1675			
Slate&Shell	Black		1675	1684			
Shale	Dark		1684	1710			
(Sand	White	Hard)	1710	1748			
1stSaltSand			1748	1830			
Slate	Black		1830	1903			
Red Rock	Red		1903	1910			
Shale	Blue		1910	2060			Bad Cave
(Little)Lime			2060	2088			
Slate	Black		2088	2095			
Lime		Hard	2095	2108			
Lime		Hard	2108	2113			
Lime			2113	2122			
2325 FT. OF 5" CASING			2122	2125			
Shale	Blue		2125	2137			
Big Lime			2137	2155			
Lime			2155	2195			
Sand(Big Injin)					Water	2285	
Run 2225 ft. of 5" casing (2325 FT)			2195	2363			
Shale&Shells	Black		2363	2440			
Lime	Black		2440	2493			
Shale&Shells	Dark		2493	2675			
Shale&Lime	Black		2675	2772			
Lime			2772	2795			
Shale&Shells (Sand - 50 foot)			2795	2823			
Oil			2821	2824	Oil	2821	Slow 1/4 bbl 12 hrs.
					Gas-Smell show	2821	
					Gas Show	2824-2829	
Oil			2829	2831	Oil		1/2 bbl. per Day
Sand			2831	2831	Gas		2600 ft.

Date _____, 19____

APPROVED _____, Owner

STATE OF WEST VIRGINIA
DEPARTMENT OF MINES
OIL AND GAS DIVISION ZA

WELL RECORD

Permit No. MON-207

Oil or Gas Well Gas
(KIND)

Company James A. Hughes
Address 2457 Woodward Ave. Detroit, Mich.
Farm _____ Acres _____
Location (waters) _____
Well No. _____ Elev. _____
District _____ County _____
The surface of tract is owned in fee by _____
Address _____
Mineral rights are owned by _____
Address _____
Drilling commenced _____
Drilling completed _____
Date Shot _____ From _____ To _____
With _____
Open Flow _____ /10ths Water in _____ Inch
_____ /10ths Merc. in _____ Inch
Volume _____ Cu. Ft.
Rock Pressure _____ lbs. _____ hrs.
Oil _____ bbls., 1st 24 hrs.
Fresh water _____ feet _____ feet
Salt water _____ feet _____ feet

Casing and Tubing	Used in Drilling	Left in Well	Packers
Size			
16			Kind of Packer
18			
10			Size of
8 1/4			
6 3/4			Depth set
5 3/16			
3			Perf. top
2			Perf. bottom
Liners Used			Perf. top
			Perf. bottom

CASING CEMENTED _____ SIZE _____ No. Ft. _____ Date _____
COAL WAS ENCOUNTERED AT _____ FEET _____ INCHES
_____ FEET _____ INCHES FEET _____ INCHES
_____ FEET _____ INCHES FEET _____ INCHES

Formation	Color	Hard or Soft	Top	Bottom	Oil, Gas or Water	Depth Found	Remarks
Lime			2831	2835			
Shale			2835	2838			
Sand			2838	2845	Gas	2838	
Shale&Shells			2845	2851			
SandyShale			2851	2855			
Sand			2855	2937			
Lime			2937	2946			
Red Rock & Shells			2946	3009			
Slate&Shells	Dark		3009	3029			
Shells&Shale	Red		3029	3039			
Shale&Shells	Dark		3039	3048			
Red Rock & Shells			3048	3061			
GordonStray			3061	3066			
Sand		Hard (Very)	3066	3091			
Shells&Slate			3091	3103			Bad Caving Reduce Hole to 4 inch.
Sand		Hard	3103	3110			
Slate	Black		3110	3120			
Sand		Hard	3120	3125			
Slate			3125	3129			
Sand		Hard	3129	3136			
Slate			3136	3146			
Sand		Hard	3146	3192			
Lime&Shells			3192	3283			
5th Sand			3283	3286	Gas	3284	
TOTAL DEPTH			3296				

