

Property line survey prepared by:

Monongahela Valley Engineering Survey, Inc.,
 Morgantown, W. Va.
 By Wilbur G. Strickler, Chief Draftsman
 W.V.A. E.P.S. 1508
 Approved by Marion F. Lumber, Chief Engineer
 W.V.A. E.P.S. 1609

COAL OWNED BY _____

NEW LOCATION

DRILL DEEPER

ABANDONMENT

COMPANY U.S. Dept. of the Interior, Bureau of Mines

ADDRESS _____

FARM Morgantown, W. Va., Experiment Station

TRACT _____ ACRES 45.3 LEASE NO. _____

WELL (FARM) No. Experimental SERIAL NO. _____

ELEVATION (SPIRIT LEVEL) 970.0

QUADRANGLE Morgantown

COUNTY Monongalia DISTRICT Morgantown

ENGINEER Robert L. Rough

ENGINEER'S REGISTRATION NO. None

FILE NO. _____ DRAWING NO. _____

DATE Oct. 13, 1962 SCALE 1" = 200'

STATE OF WEST VIRGINIA
 DEPARTMENT OF MINES
 OIL AND GAS DIVISION
 CHARLESTON

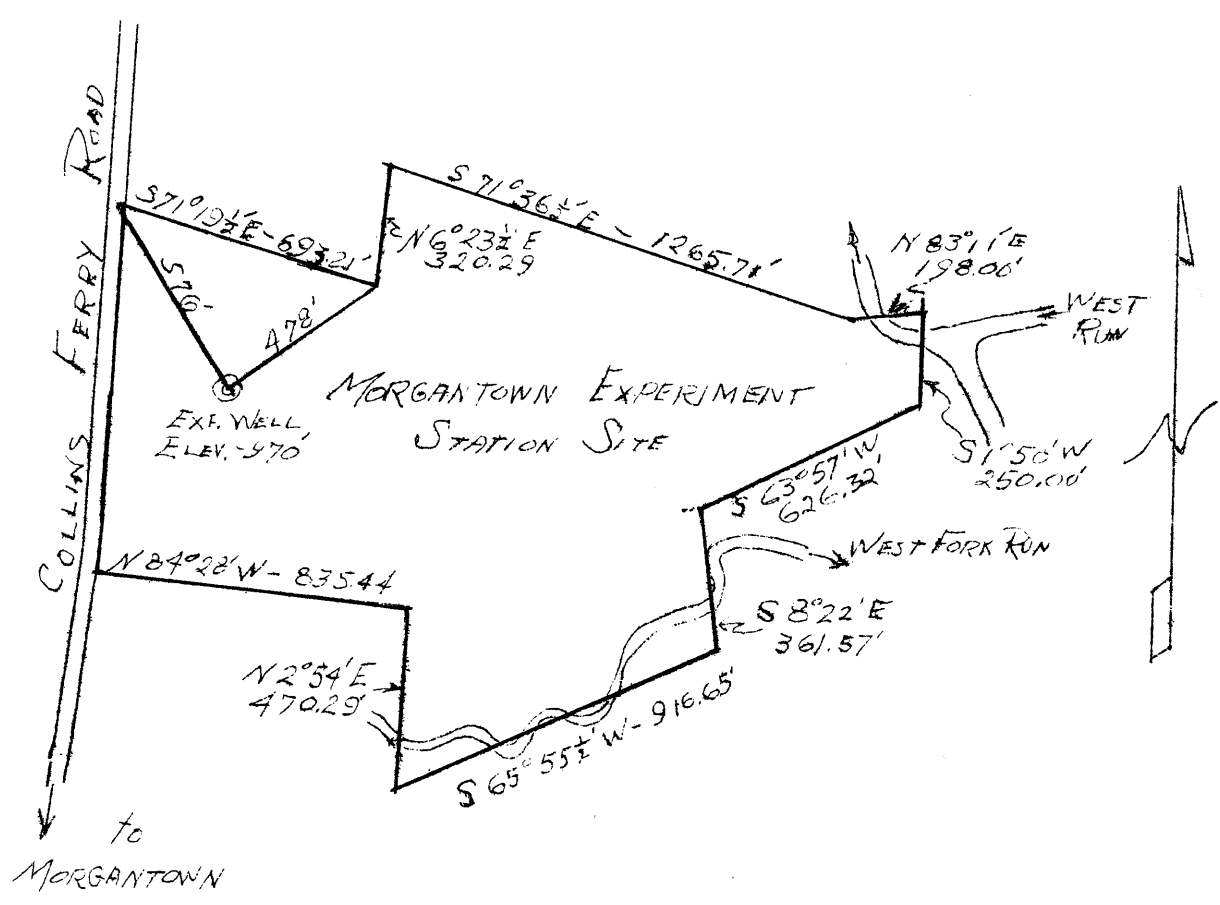
WELL LOCATION MAP
 061-
 MON-205-A

+ SHOWS LOCATION OF WELL ON UNITED STATES TOPOGRAPHIC MAP SCALE 1" TO 62,500, LATITUDE AND LONGITUDE LINES BEING REPRESENTED BY BORDER LINES AS SHOWN.

— INDICATES ONE INCH SPACES ON BORDER LINE OF ORIGINAL TRACING.

LATITUDE 39° 45'

LONGITUDE 79° 55'



Topo Loc (with circled X and arrow)

511
S 37° 45'
W 77' 55'
3.22

Property line Survey prepared by:

Monongahela Valley Engineering Company, Inc.,
 Morgantown, W. Va.
 By Wilbur G. Strickler, Chief Draftsman
 W.Va. R.P.E. 1508
 Approved by Marion F. Dunbar, Chief Engineer
 W.Va. R.P.E. 1669

Coal Owned By _____

New Location ...#

Company U.S. Dept. of the Interior, Bureau of Mines
 Address _____
 Farm Morgantown, W. Va., Experiment Station
 Tract _____ Acres 45.3 Lease No. _____
 Well (Farm) No. _____ Experimental Serial No. _____
 Elevation (Spirit Level) _____ 970.0
 Quadrangle _____ Morgantown
 County Monongalia District Morgan
 Engineer Robert L. Raugh
 Engineer's Registration No. _____ None
 File No. _____ Drawing No. _____
 Date Oct. 13, 1952 Scale 1" = 500'

STATE OF WEST VIRGINIA
 DEPARTMENT OF MINES
 OIL AND GAS DIVISION
 CHARLESTON

WELL LOCATION MAP
 File No. MON - 205

Denotes location of well on United States Topographic Maps, scale 1 to 62,500, Latitude and longitude lines being represented by border lines as shown.

- Denotes one inch spaces on border line of original tracing.



STATE OF WEST VIRGINIA
DEPARTMENT OF MINES
OIL AND GAS DIVISION //

Morgantown

WELL RECORD

Permit No. MON-205

Oil or Gas Well Experimental
(KIND)

Company U. S. Dept. of the Interior
Address Morgantown, W. Va.
Farm Morgantown Experiment Station Acres 45
Location (waters) _____
Well No. Experimental Elev. 970
District Morgan County Monongalia
The surface of tract is owned in fee by U. S. Dept. of the Interior Address _____
Mineral rights are owned by U. S. Dept. of the Interior Address _____
Drilling commenced Feb. 17, 1953
Drilling completed May 14, 1953
Date Shot _____ From _____ To _____
With _____
Open Flow _____ /10ths Water in _____ Inch
_____ /10ths Merc. in _____ Inch
Volume _____ Cu. Ft.
Rock Pressure _____ lbs. _____ hrs.
Oil _____ bbls., 1st 24 hrs.
Fresh water 35, 621, 719, feet 787, 870 feet
Salt water _____ feet _____ feet

Casing and Tubing	Used in Drilling	Left in Well	Packers
Size			
16	90	90	Kind of Packer
13-3/8	776	776	
10-3/4			Size of
8 1/2	-	-	
6 1/2	-	-	Depth set
5 3/16	-	-	
3	-	-	Perf. top
2	-	-	Perf. bottom
Liners Used			Perf. top
			Perf. bottom

CASING CEMENTED 13-3/8 SIZE 776 No. Ft. 4/16/53 Date
10-3/4 1151 5/19/53

COAL WAS ENCOUNTERED AT 375 FEET INCHES
475 FEET INCHES 651 FEET INCHES
761 FEET INCHES FEET INCHES

Formation	Color	Hard or Soft	Top	Bottom	Oil, Gas or Water	Depth Found	Remarks
Clay	Yellow	S	0	11			
Mud	"	S	11	22			
Clay	Gray	S	22	39-1/2	Water	35	
Sand	Brown	H	39-1/2	47-1/2			
"	Gray	H	47-1/2	54-1/2			
"	Brown	H	54-1/2	55			
"	Red	H	55	58			
"	Brown	H	58	90			
"	Gray	H	90	100			
" (limey)	"	H	100	103			
Slate and shells	Black & gray		103	106			
Lime	Dark		106	108			
Slate shell	Dark		108	112			
Lime	"		112	119			
Lime	Gray	H	119	152			
Lime (sandy)			152	157			
Sand		H	157	162			
Slate	Dark		162	166			
Slate, lime shells			166	191			
Shale	Blue		191	200			
Lime	Gray	S	200	218			
"	White		218	223			
"	Red		223	235			
Slate, shells	Dark		235	240			
Red rock	Red		240	245			
Slate	Dark		245	255			
Slate, lime shells			255	260			
Shale and shells	Gray		260	278			
Lime broken			278	289			
"	White		289	300			
"	Gray		300	311			
"	White		311	316			
Red rock	Red		316	321			
Lime	White	H	321	334			
" sandy	Dark		334	338			



Formation	Color	Hard or Soft	Top //	Bottom	Oil, Gas or Water	Depth Found	Remarks
Sand			338	344			
Slate			344	348			
Slate and shells	Black		348	365			
Lime	White		365	368			
" broken			368	374			
" shells			374	383			
Sand	Gray	H	383	423			
Lime	"		423	448			
Shale	Blue		448	453			
Lime	Gray		453	463			
Lime	White		463	474			
Coal	Black		474	480			
Slate	Dark		480	490			
Lime			490	497			
Slate	Blue		497	518			
Lime			518	523			
Slate			523	526			
Shale	Light		526	532			
Lime	Dark		532	536			
"	Gray		536	565			
"	White		565	570			
Sand	Dark	H	570	575	Show of gas	571	
Lime, sandy	"		575	580			
Sand	Gray		580	633	Water Gas	621 625	
Sandy lime	Gray		633	636			
Lime	"		636	646			
"	Dark		646	658			
Sand, limey	Gray		658	664			
Sand	"		664	669			
Slate	"		669	673			
Lime	"		673	675			
Slate	Black		675	681			
Lime	Gray	H	681	685			
Slate	Black		685	696			
Sand	White	H	696	728	Water	719	
Lime	Gray		728	731			
Shale and shells	Black		731	745			
Slate & lime	Black		745	763			
Sand	Gray		763	794			
S.L.M.			776	794	Water	787	
Sand	Dark	H	794	798			
"	Gray	H	798	809			
"	Dark	H	809	812			
"	White	H	812	817			
"	Gray	H	817	824			
"	White	H	824	826			
"	Gray	H	826	829			
"	Dark	H	829	835			
"	Brown	H	835	838			
Sand, limey	"	H	838	846			
Sand	"	H	846	850			
"	White	H	850	900	Water	870	
"	Gray		900	915			
"	White		915	939			
Shale	Dark		939	946			
Lime	"	H	946	948			
Slate, lime shells			948	960			
Lime	Dark		960	969			
"	White		969	973			
"	Gray		973	978			
" shells			978	985			
Lime	Gray		985	991			
Slate, lime shells			991	1000			

(Continued)

Date May 19, 1953

APPROVED U.S. Dept. of the Interior, Owner

By [Signature]
(Title)
Chief, Petroleum and Natural Gas Branch,
Region VIII, Bureau of Mines

WELL RECORD (Continued)

Formation	Color	Hard or Soft	Top	Bottom	Oil, Gas or Water	Depth Found	Remarks
Lime		H	1000	1001			
" shells			1001	1005			
Lime	Dark		1005	1010			
"	Gray		1010	1017			
Sandy lime			1017	1025			
Sand	Gray		1025	1028			
Slate	"		1028	1035			
Lime	Red		1035	1041			
"	Gray		1041	1050			
"	White		1050	1053			
"	Gray		1053	1067			
Red rock	Red		1067	1078			
Lime	Dark		1078	1085			
Lime	Red		1085	1101			
"	Gray		1101	1109			
Mud	Blue		1109	1116			
Lime	Gray		1116	1123			
"	Dark		1123	1131			
Slate	Gray		1131	1134			
Lime	Dark		1134	1140			
"	Red		1140	1141			
"	Gray		1141	1144			
Limey sand	Gray		1144	1148			
Sand	White		1148	1152			

S.L.M.
1156



