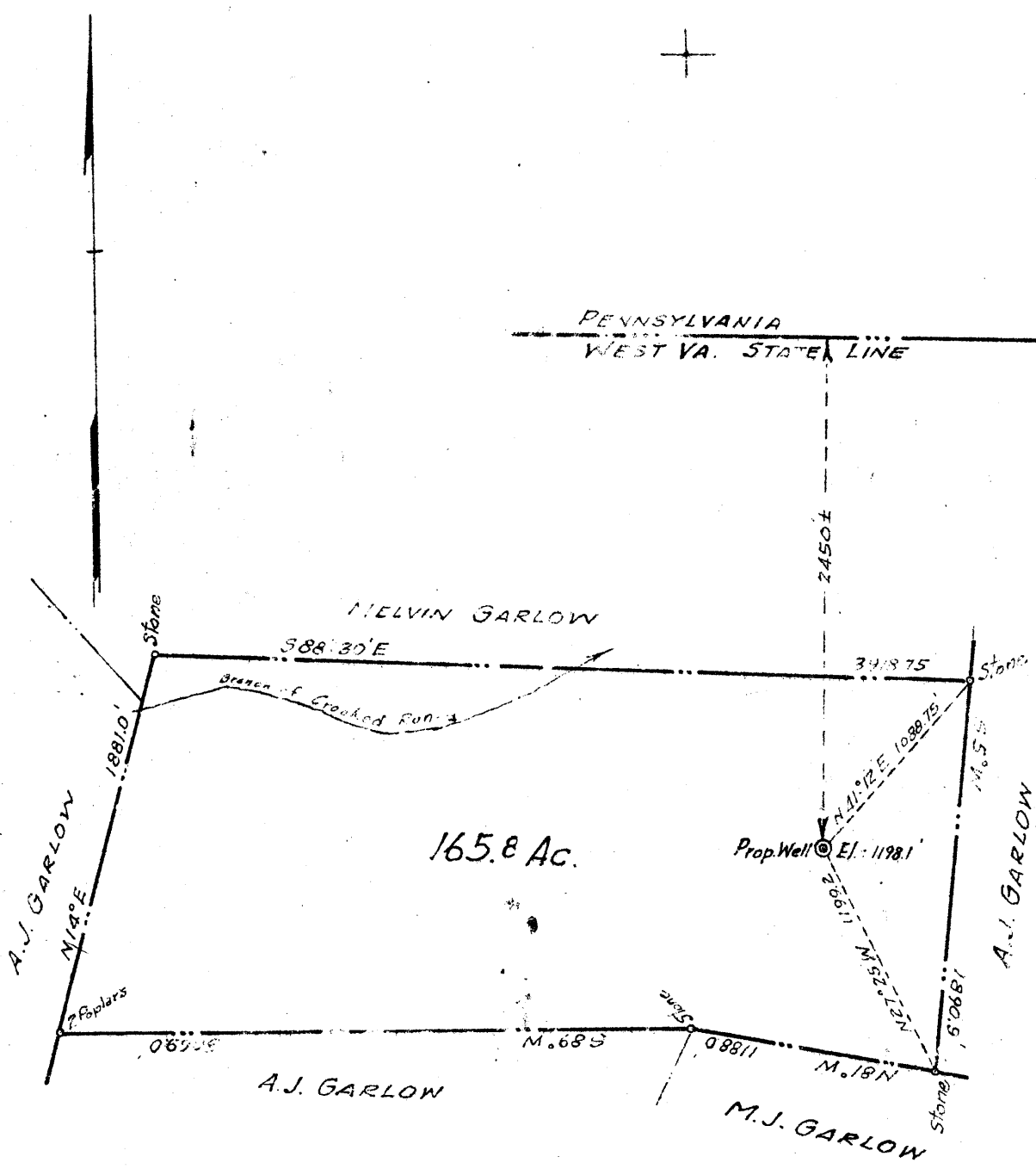


Latitude 39 - 45

Longitude 79 - 55'



New Location   
 Drill Deeper   
 Abandonment

Company ROSEDALE GAS Co.  
 Address Box 676, Morgantown, W. Va.  
 Farm MARION GARLOW  
 Tract \_\_\_\_\_ Acres 165.80 Lease No. \_\_\_\_\_  
 Well (Farm) No. 1 Serial No. \_\_\_\_\_  
 Elevation (Spirit Level) 1198.10'  
 Quadrangle Morgantown  
 County Monongalia District Cass  
 Engineer W.M. Catcher  
 Engineer's Registration No. 650  
 File \_\_\_\_\_ Drawing No. \_\_\_\_\_

STATE OF WEST VIRGINIA  
 DEPARTMENT OF MINES  
 OIL AND GAS DIVISION  
 CHARLESTON

WELL LOCATION MAP  
 FILE NO. MON-197

+ Denotes location of well on United States Topographic Maps, scale 1 to 62,500, latitude and longitude lines being represented by border lines as shown.

- Denotes one inch spaces on border line of original tracing.