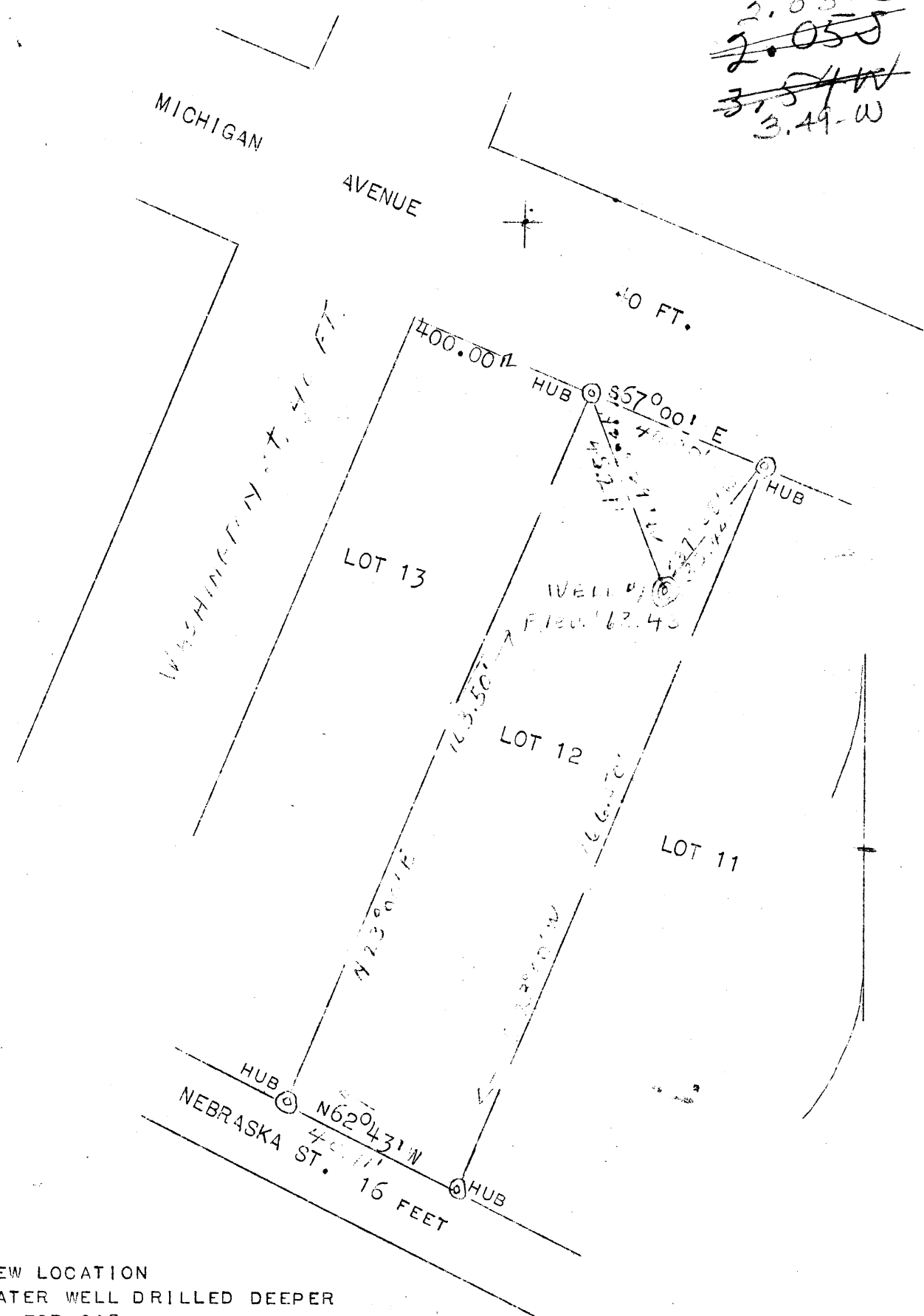


LATITUDE 39° 40'

~~2.03-S~~  
~~2.05-S~~  
~~3.54-W~~  
3.49-W

LONG. 79° 55'



NEW LOCATION  
WATER WELL DRILLED DEEPER  
FOR GAS

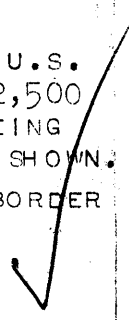
COMPANY WAYNESBURG TOOL CO.  
 ADDRESS WAYNESBURG, PA.  
 FARM LOT NO. 12, BLK. N. RIVERSIDE, W. VA  
 TRACT 1 ACRES 0.151 LEASE NO.  
 WELL (FARM) NO. 1 SERIAL NO.  
 ELEVATION (SP. LEVEL) 863.43  
 COUNTY MONONGALIA DIST. GRANT  
 QUADRANGLE MORGANTOWN WC  
 ENGINEER RALPH E. BAKER  
 ENGINEER'S REG. NO. 441  
 FILE NO. 2-19D-186 DWG. NO. 7176  
 DATE OCT. 19, 1948 SCALE 1"

STATE OF WEST VIRGINIA  
 DEPT. OF MINES  
 OIL AND GAS DIVISION  
 CHARLESTON

WELL LOCATION MAP  
 FILE NO. MON-190D

DENOTES LOCATION OF WELL ON U.S.  
 TOPOGRAPHIC MAPS, SCALE 1 TO 62,500  
 LATITUDE AND LONGITUDE LINES BEING  
 REPRESENTED BY BORDER LINES AS SHOWN.

DENOTES ONE INCH SPACES ON BORDER  
 LINE OF ORIGINAL TRACING.



WEST VIRGINIA DEPARTMENT OF MINES  
OIL & GAS DIVISION  
W E L L R E C O R D

Permit No. Mon 190 D  
Morgantown Quad.

Gas Well  
CASING & TUBING

Company	Waynesburg Tool Co.			
Address	Box 511, Waynesburg, Pa.			
Farm	Lot #2, Blk, N. Riverside, W. Va. A 0.151			
Location		13	40	40
Well No.	1 Elev. 863	10	400	400
District	Grant Monongalia County	8½	460	
Surface	Waynesburg Tool Co., Waynesburg, Pa.	6 5/8	1044	1044
Mineral	Same	2	1379	1379
Commenced				
Completed	Feb. 26, 1949			
Not shot				Anchor Packer
Open flow	6/10ths W in 1"			Size 2
Volume	28,992 C.F.			Depth 1163
Rock Pressure	485 lbs. 24 hrs.			Coal at 281'
No oil				

This well was drilled deeper, and record given you when applying for drilling permit, was estimated. The figures below are steel line measurements.

✓ 3rd Salt Sand	821	920
Gritty Lime, Slate & R.R.	920	1030
✓ Big lime	1030	1110
✓ Injun Sand 371	1110	1225
✓ Squaw	1328	1379

1030	1110
<u>863</u>	<u>863</u>
167	247

Gas 1183-1185  
Gas 1216-1219  
Gas 1340-1342