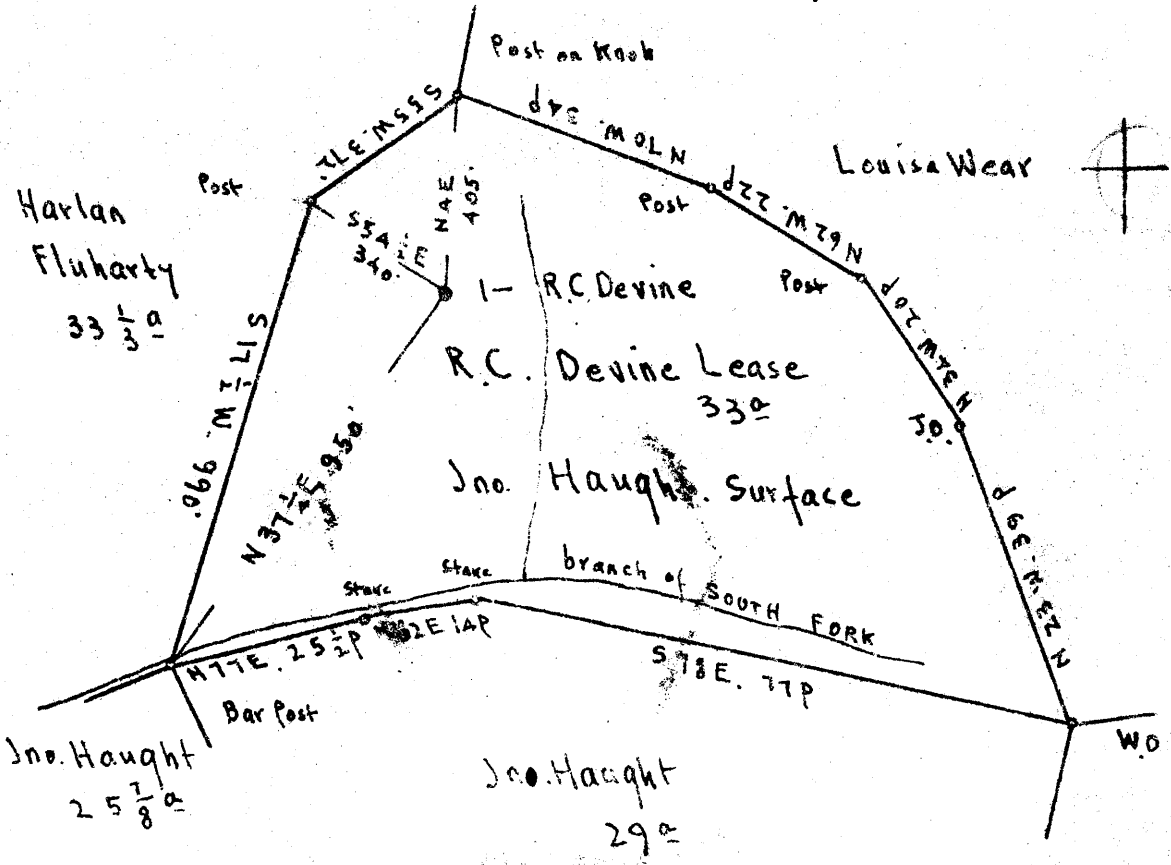


Scale: 1" = 400 Feet



2.59S
0.94W

Surface: Jno. Haught, R.F.D # 1, Metz, Marion Co., W.Va.
Coal: State of West Virginia.

New Location
Drill Deeper
Abandonment

JUN 22 1948

On 400 map # 2-457

S 12-13 E 15

Company The Tri-State Pipe Co.
 Address Bellaire, Ohio
 Farm R.C. Devine
 Tract _____ Acres 33 Lease No. _____
 Well (Farm) No. 1 Serial No. _____
 Elevation (Spirit Level) Floor 1382.72
 Ground 1382.7
 Quadrangle MANNINGTON
 County Monongalia District Battelle
 Engineer E.C. Tabler
 Engineer's Registration No. _____
 File No. _____ Drawing No. _____
 Date May 25th 1948 Scale 1" = 400 Feet

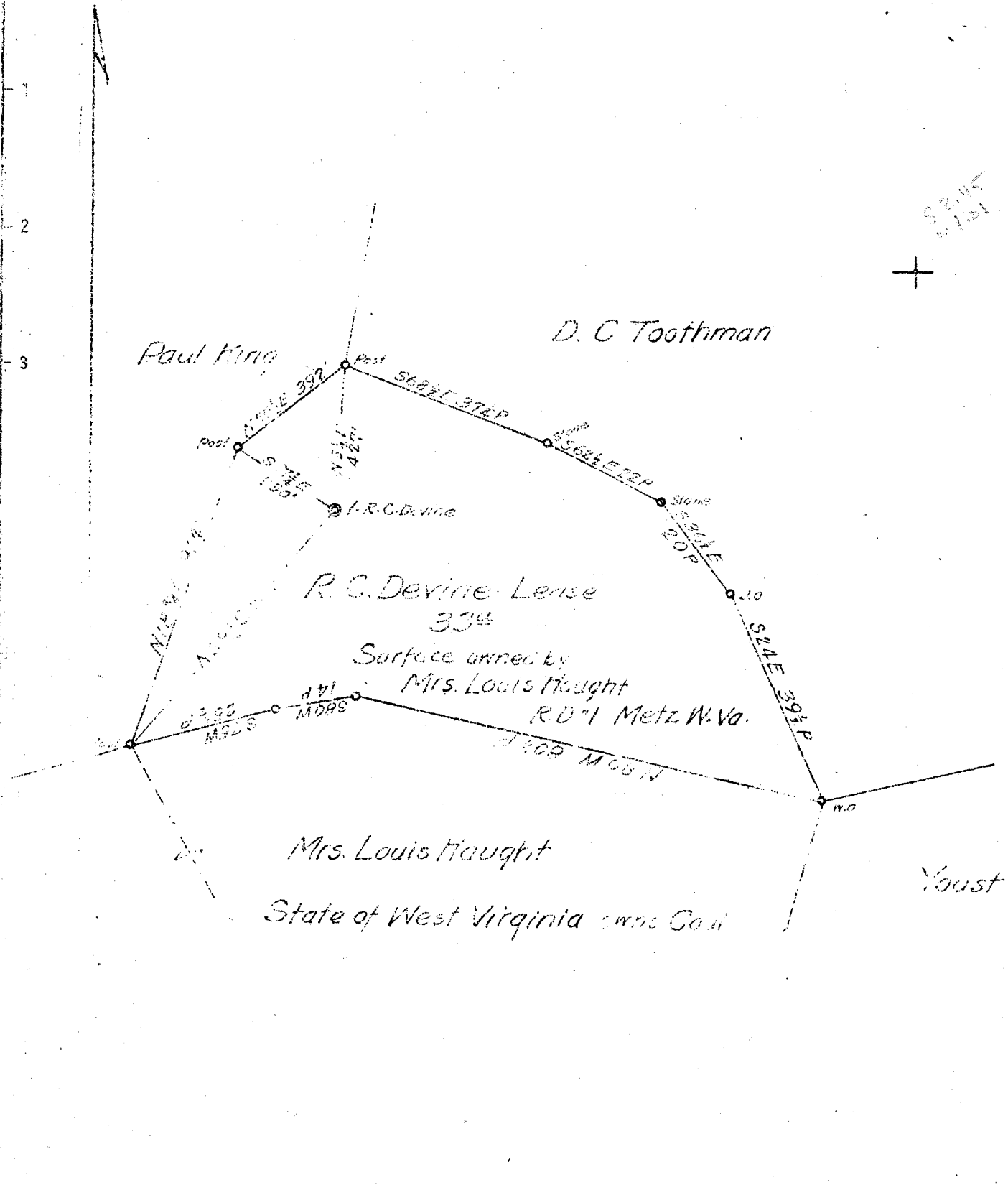
STATE OF WEST VIRGINIA
DEPARTMENT OF MINES
OIL AND GAS DIVISION
CHARLESTON

WELL LOCATION MAP
FILE NO. MON-368-A

+ Denotes location of well on United States Topographic Maps, scale 1 to 62,500, latitude and longitude lines being represented by border lines as shown.
- Denotes one inch spaces on border line of original tracing.

Latitude 39 40

Longitude 80 20



New Location _____
 Drill Deeper... **X**
 Abandonment _____

Map N70E N12-13 E15-16

Company South Penn Natural Gas Co.
 Address Parkersburg W. Va
 Farm R. C. Devine
 Tract _____ Acres 33 Lease No. 22991
 Well (Farm) No. 1 Serial No. _____
 Elevation (Spirit Level) 1381.23 D.F.
 Quadrangle Mannington
 County Monongalia District Battelle
 Engineer C Truman Barnett
 Engineer's Registration No. _____
 File No. _____ Drawing No. _____
 Date 1-1-44 Scale 1" = 400'

STATE OF WEST VIRGINIA
 DEPARTMENT OF MINES
 OIL AND GAS DIVISION
 CHARLESTON

WELL LOCATION MAP

FILE NO. MON-170
was 061-30366

+ Denotes location of well on United States Topographic Maps, scale 1 to 62,500, latitude and longitude lines being represented by border lines as shown.

- Denotes one inch spaces on border line of original tracing.



434

STATE OF WEST VIRGINIA
DEPARTMENT OF MINES
OIL AND GAS DIVISION

WELL RECORD

Permit No. 368-A

Oil or Gas Well X
(KIND)

Company The Tri-State Pipe Company
Address Bellaire, Ohio
Farm F. C. Devine Acres 23
Location (waters).....
Well No. 1 Elev. 1300.74
District Battelle County Monongalia
The surface of tract is owned in fee by.....
Address.....
Mineral rights are owned by.....
Address.....
Drilling commenced.....
Drilling completed August 8, 1907
Date Shot From To
With

Casing and Tubing	Used in Drilling	Left in Well	Packers
Size			
16			Kind of Packer
13			
10	270'	270'	Size of
8 1/4	1608'	1608'	
6	2245'	2245'	Depth set
5 3/16	2785'	2785'	
3			Perf. top
2	3471'	3471'	Perf. bottom
Liners Used			Perf. top
4" x 4 1/2"	243'	243'	Perf. bottom

Open Flow /10ths Water in..... Inch
/10ths Merc. in..... Inch
Volume..... Cu. Ft.
Rock Pressure..... lbs..... hrs.
Oil..... bbls., 1st 24 hrs.
Fresh water..... feet..... feet
Salt water..... feet..... feet

CASING CEMENTED No. SIZE No. Ft. Dat

COAL WAS ENCOUNTERED AT 1195 FEET 84 INCHES
1117 FEET 84 INCHES FEET INCHES
FEET INCHES FEET INCHES

Formation	Color	Hard or Soft	Top	Bottom	Oil, Gas or Water	Depth Found	Remarks
Conductor				16'			
Mapletown Coal			1110	1117			
Pittsburgh Coal			1195	1202			
Salt Sand			2115	2215			
Little Lime			2400	2420			
Big Injun			2490	2650			
Fifty Foot			3130	3215			
Gas			3115		Gas		
Campbell Run			3354				
Oil			3358		Oil		
Gordon Stray			3410	3426			
Slate			3433				
Gordon			3433	3444			
Fourth			3450				
Gas & Oil			3450		Gas & Oil		
Total depth				3471			

