

New Location   
 Drill Deeper   
 Abandonment

Surface: Audra Carrothers Cross,  
 Wadestown, W.Va.  
 Coal: Wheeling Dollar Saving & Trust Co.,  
 % Bernard G. Sampson, Box 368, Fairmont, W.Va.

MAP NTIE N13-14 E18-19

Company South Penn Oil Company  
 Address Parkersburg West Virginia  
 Farm A. J. Carrothers  
 Tract \_\_\_\_\_ Acres 215 Lease No. 148  
 Well (Farm) No. 9 Serial No. \_\_\_\_\_  
 Elevation (Spirit Level) 1048.03 Floor \_\_\_\_\_  
 Quadrangle Mannington  
 County Monongalia District Battelle  
 Engineer A. C. Hillbert  
 Engineer's Registration No. 2534  
 File No. 151 Drawing No. \_\_\_\_\_  
 Date Feb. 18, 1960 Scale 1" = 800'

STATE OF WEST VIRGINIA  
 DEPARTMENT OF MINES  
 OIL AND GAS DIVISION  
 CHARLESTON

WELL LOCATION MAP

FILE NO. MON-640-A

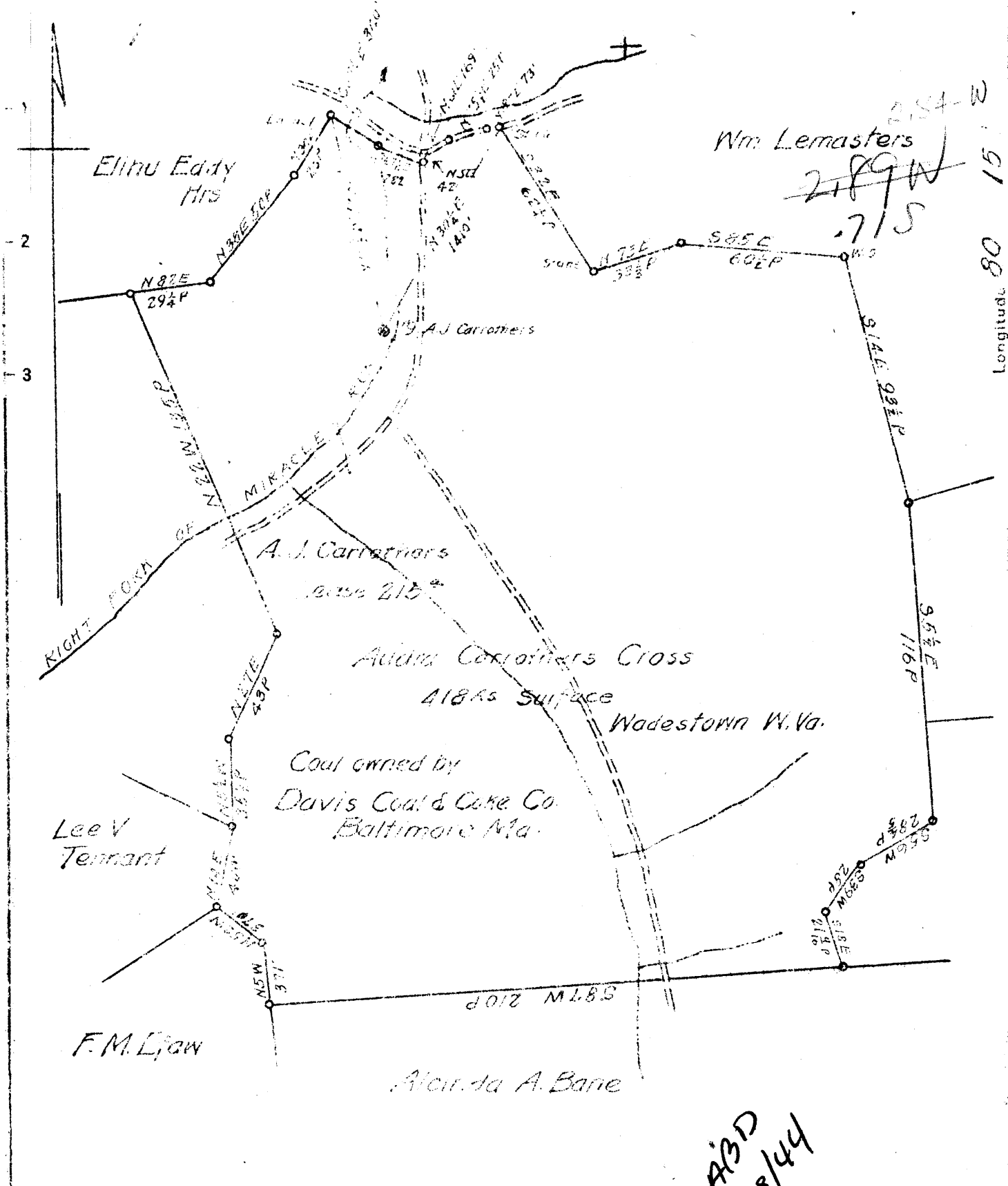
169

+ Denotes location of well on United States Topographic Maps, scale 1 to 62,500, latitude and longitude lines being represented by border lines as shown.

- Denotes one inch spaces on border line of original tracing.

Latitude 39 1 20

Longitude 80 15



New Location   
 Drill Deeper   
 Abandonment

Map N 71 E N 13-14 E 18-19

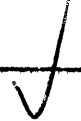
Company	South Penn Natural Gas Co
Address	Parkersburg W. Va.
Farm	A. J. Carrothers
Tract	Acres 215 Lease No. 148
Well (Farm) No.	9 Serial No.
Elevation (Spirit Level)	10480 <sup>3</sup> D.F.
Quadrangle	Mannington
County	Monongalia District: Butte
Engineer	G. Truman Barnett
Engineer's Registration No.	
File No.	Drawing No.
Date	1-20-44 Scale 1" = 800'

STATE OF WEST VIRGINIA  
 DEPARTMENT OF MINES  
 OIL AND GAS DIVISION  
 CHARLESTON

WELL LOCATION MAP  
 FILE NO. Mon-169

+ Denotes location of well on United States Topographic Maps, scale to 62,500, latitude and longitude lines being represented by border lines as shown.

- Denotes one inch spaces on border line of original tracing.



WEST VIRGINIA DEPARTMENT OF MINES  
OIL & GAS DIVISION  
W E L L R E C O R D

Permit No. Mon 169

Oil & Gas Well  
CASING & TUBING

Mannington Quad.

Company

South Penn Natural Gas Co.

Address

Union Trust Bldg., Parkersburg, W.Va.

Farm

A.J. Carrothers Acres 215

Location

10 245'6

Well No.

9 Elev. 1048.03 D.F.

8 1/2 1284'9

District

Battelle Monongalia County

65/8 2198'3

Surface

Audra C. Cross, 418 E. Chestnut St.,

5 3/16 2757'

Lisbon, Ohio

4 1/2 x 4 269'7

Mineral

Same

Cond. 12'

Commenced

Nov. 24, 1913

Coal at 415' 36";

Completed

Jan. 17, 1904

695' 60"; 785' 96"

Date shot

11-3-19 10 qts.

Oil

5 bbls. 1st 24 hrs.

✓ Fairview Coal	415	418	
✓ Mapletown Coal	695	700	
✓ Pittsburgh Coal	785	793	
✓ Little Dunkard?	1100	1130	
✓ Big Dunkard	1265	1335	
✓ Gas Sand	1465	1570	
✓ Salt Sand	1670	1810	
✓ Little Lime	1978	1990	
✓ Pencil Cave	1990	2000	
✓ Big Lime	2000	2075	
✓ Big Injun Sand 3 <sup>11</sup>	2075	2235	
✓ Squaw Sand	2253	2275	
✓ 50' Sand	2690	2720	
✓ 30' Sand	2800	2840	
✓ <del>Campbells Run Sand</del>	2932	2969	Show oil 2150
✓ <del>Gordon Stray Sand</del>	2973	2988	Oil 3011-3015
✓ Gordon Sand	2993	3020	
TOTAL DEPTH		3021	

DRILLED DEEPER

Commenced July 3, 1944  
Completed July 24, 1944  
(no change in csg.)

Fourth Sand	3040	3060
TOTAL DEPTH		3255

3255  
3021  
-----  
234 - new 1/4"

Fish	Oil & Gas	3046 - 3049, Est. 5 bbl. per week, Gas test 2. W 3/8" Orf. 4528 C'
	Bastard Gas	3068-3070, Test 2. W. 3/4" Orf., 18,381 C'
	Bastard Gas	3164-3166 Test 8 W 3/4" Orf., 36,761 C'
	Bastard Gas	3185-3188' Test 38/10 W 1 1/2" Orf., 78,845 C'
		Blew down in 3 hrs. to 22/10 W 1 1/2", Orf. 59,993 C'