

Latitude

Longitude

2.20s
1.45w

Topo Location

7.5' Loc. _____ 15' Loc. _____
 _____ (calc.) _____

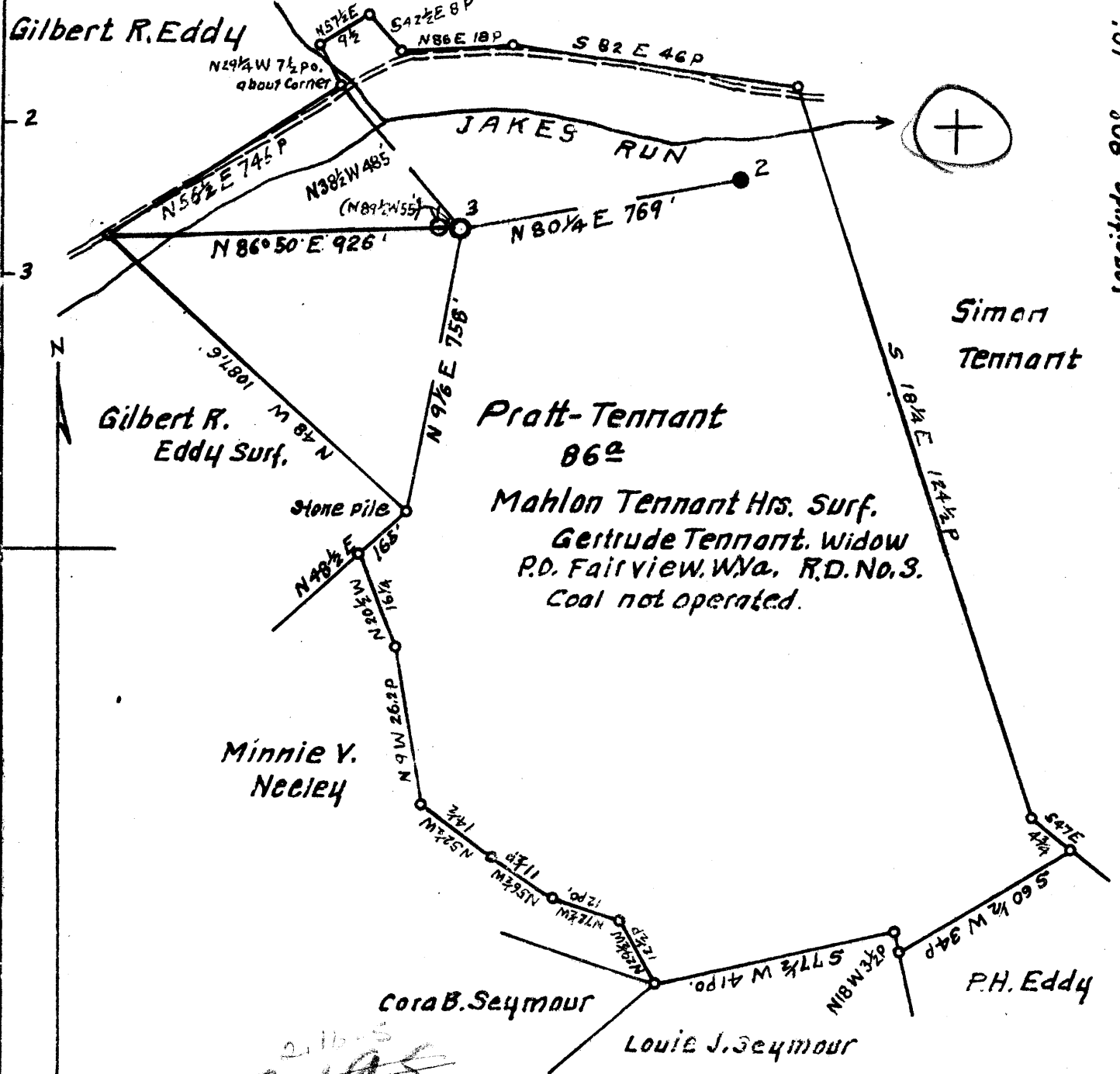
Company South Penn Nat Gas
 Farm Paatt Tennant #3
 15' Quad _____
 (sec.) _____
 7.5' Quad Blacksville
 District Clay

WELL LOCATION PLAT

County 061 Permit 151

Latitude 39° 40'

Mahlon Tennant Hrs. Surface



2,195
1.2 W

New Location X
 Drill Deeper
 Abandonment

REVISED

Map N62E

Sqs. N12 W24.

Company South Penn Natural Gas Co.
 Address Parkersburg, W.Va.
 Farm Pratt - Tennant
 Tract Acres 86 Lease No. 12899.
 Well Farm No. 3. Serial No. _____
 Elevation Spirit Level 1130.85 Ground _____
 Quadrangle Blacksville
 County Monongalia District Clay
 Engineer Emmon Haines
 Engineers Registration No. _____
 File No. _____ Drawing No. _____
 Date 10-17-42. Scale! " = 400'

STATE OF WEST VIRGINIA.
 DEPARTMENT OF MINES
 OIL AND GAS DIVISION
 CHARLESTON

WELL LOCATION MAP
 FILE NO. MON - 151 - R

+ Denotes location of well on United States Topographic Maps scale 1" to 62,500 latitude and longitude lines being represented by border lines as shown.
 - Denotes one inch spaces on border line of original tracing.

WEST VIRGINIA DEPARTMENT OF MINES
OIL & GAS DIVISION
WELL RECORD

Permit No. Mon 151		Oil Well
Blacksville Quad.		CASING & TUBING
Company	South Penn Natural Gas Company	
Address	Union Trust Bldg., Parkersburg, W.Va.	
Farm	Pratt-Tennant Acres 86	
Location	--	10 630
Well No	3 Elev. 1130-84	8 1/2 1126
District	Clay Monongalia County	6 5/8 1822
Surface	Manion Tennant Hrs., c/o Gertrude Tennant R.D. #3 Fairview, W.Va.	2 1997
Mineral	Charlie Tennant et al., R.D. #4 Waynesburg, Pa.	
Commenced	4-29-43	
Completed	6-17-43	
Date shot	7-6-43 Depth 1986 to 2002 with 40 qts.	
Volume	14,234 C.F.	
Oil	One bbls. 1st 24 hrs.	
Fresh Water	1529-1533 10 8" blrs. pr. hr.	

Clay	0	13	Slate	945	955
Lime	13	25	Slate	955	975
Shells	25	50	Slate	975	1015
Slate	50	58	Sand	1015	1027 L. Dunkard
Sand	58	73	Slate	1027	1031
Slate & Shells	73	90	Little Dunkard	1031	1046
Lime	90	120	Slate	1046	1090
Slate	120	130	Slate	1090	1105
Slate & Lime Shells	130	145	Big Dunkard Broken	1105	1150
Sand	145	210	Lime, Broken	1150	1240
Native Coal	210	213	Shale	1240	1260
Lime	213	233	Lime & Slate	1260	1280
Slate & Lime Shells	233	262	Sand	1280	1292
Slate & Lime	262	270	Slate	1292	1300
Lime	270	365	Shale	1300	1310
Red Rock	365	370	Gas Sand	1310	1340
Sand	370	390	Lime	1340	1380
Slate	390	400	1st Salt Sand Hard	1380	1460
Lime	400	413	Slate	1460	1473
Slate	413	420	2nd Salt Sand	1473	1581
Lime	420	470	Shale	1581	1586
Slate	470	484	Lime Shells	1586	1598
Mapletown Coal	484	489	Shale	1598	1600
Slate	489	517	Sand	1600	1612
Lime & Slate	517	530	Slate	1612	1617
Lime, Hard	530	560	Lime	1617	1646
Slate	560	576	Red Rock	1646	1649
Lime	576	581	Lime Shells	1649	1653
Shale	581	596	Red Rock	1653	1663
Pittsburgh Coal	596	604	Lime	1663	1703
Slate	604	625	Lime, Gritty	1703	1740
Lime	625	630	Slate	1740	1743
Slate	630	640	Lime Gritty	1743	1764
Lime	640	675	Slate	1764	1771
Slate	675	695	Lime	1771	1785
Lime	695	708	Slate	1785	1788
Slate	708	712	Lime	1788	1795
Shale	712	720	Lime	1795	1801
Sand	720	730	Pencil Cave	1801	1806
Slate	730	750	Big Lime	1806	1900
Lime, Gritty	750	775	Big Injun	1900	SLM
Slate	775	794	REMARKS: Oil & Gas 1986'7; Oil show		
Lime	794	810	only 1988'7; Gas 36,547 C.F.		
Slate	810	880	Oil show only 1992'3		
Slate	880	890	TOTAL DEPTH		
Lime	890	900	2007		
Sand	900	916	NATURAL PRODUCTION: 1 1/2 barrels Oil		
Slate	916	925	per day 3.0 water 3/4 Orf. 22,514 C.F.		
Red Rock	925	935			
Lime	935	945			

WEST VIRGINIA DEPARTMENT OF MINES
OIL & GAS DIVISION
WELL RECORD

Permit No. Mon 151-P
Blacksville Quad.

Oil Well
CASING & TUBING

Company	Scott Penn Natural Gas Company			
Address	Union Trust Bldg., Parkersburg, W. Va.			
Farm	Pratt-Tennant	Acres 86	10	610 Pulled
Location	Jakes Run		8 1/2	780
Well No	3	Elev. 1130.73	6 5/8	1610 Pulled
District	Clay	Monongalia County		1360'
Surface	Mahlon Tennant Hrs., R.D. #2, Fairview, W. Va.			
Mineral	Charles Tennant et al, R.D. #4, Waynesburg, Pa.			
Commenced	Aug. 21, 1894		5 3/16	302
Completed	Oct. 11, 1894			
Oil	135 bbls., 1st 24 hrs.			Coal at 584' ? "

Pittsburgh Coal	584
Big Injun 3/4"	1884
TOTAL DEPTH	2002

1st pay	1892
2nd Pay	None

Well abandoned April 20, 1899
To be reclaimed.