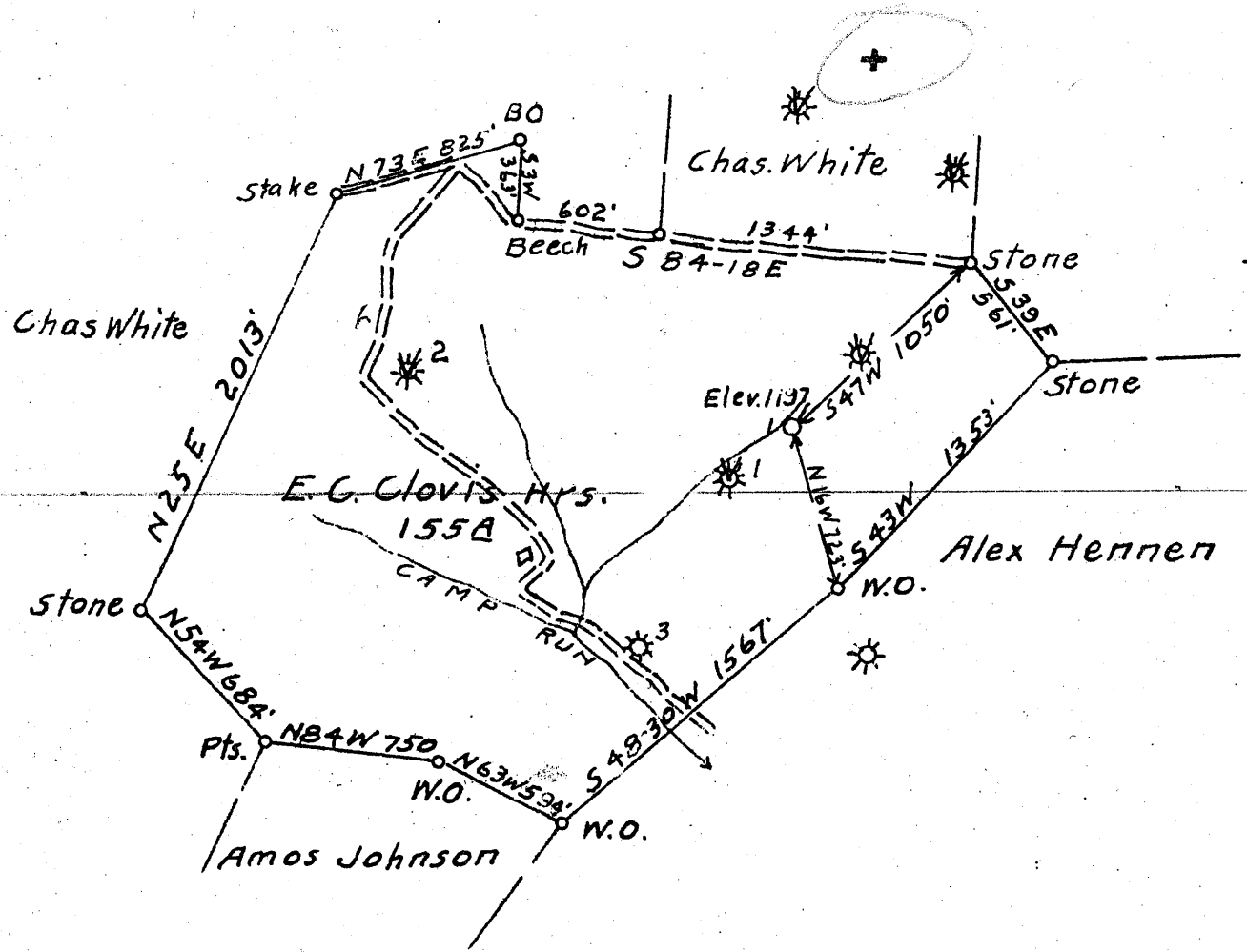


Latitude 39° 45'
39° 42' 30"

*72
445
.250*

Longitude 80° 22' 30"
80° 20'



New Location
 Drill Deeper
 Abandonment

Abd. June 51

*3,40 S
2,10 W
2,56 W*

Company Dr. C. H. Clovis
 Address 33 Walnut Ave. Wheeling, W. Va.
 Farm E. C. Clovis Hrs.
 Tract 1 Acres 155 Lease No. _____
 Well (Farm) No. 1 Serial No. _____
 Elevation (Spirit Level) 1197
 Quadrangle Mannington NC.
 County Monongalia District Battelle
 Engineer O. D. Nutter
 Engineer's Registration No. _____
 File No. _____ Drawing No. _____
 Date April 17, 1942 Scale 1" = 800'

STATE OF WEST VIRGINIA
 DEPARTMENT OF MINES
 OIL AND GAS DIVISION
 CHARLESTON

WELL LOCATION MAP
 FILE NO. MON-143

+ Denotes location of well on United States Topographic Maps, scale 1 to 62,500, latitude and longitude lines being represented by border lines as shown.
 - Denotes one inch spaces on border line of original tracing.

WEST VIRGINIA DEPARTMENT OF MINES
OIL & GAS DIVISION
W E L L R E C O R D

Permit No. Mon-143								Gas Well
Company	Dr. Charles H. Clovis, Wheeling, W. Va.							CASING & TUBING
Address	Hundred, W. Va.					8 1/2	250	250
Farm	E. C. Clovis heirs, Acres 155 A					6 5/8	972	972
Location	Dunkard Creek					5 3/16	1425	1425
Well No	1 Elev. 1197'					3	1425	1425
District	Dattolla Monongalia County							
Surface	F. J. Clovis 2/3, C. E. Clovis 1/6							Anchor Packer
	Dr. C. H. Clovis 1/6, Burton, W. Va.							Size 3'5" and 3'7"
Mineral	Pgh Coal R. W. Playford Est. Uniontown, Pa.							Depth 2nd
	(other by surface owners)							16'4" below 1st
Commenced	April 14, 1942							Perf. top jt. 9'4"
Completed	May 26, 1942							
Shot	Not shot							Coal 610' Waynesburg 5'
Flow	7/10ths W in 2"							844' Mapletown 6'
Volume	115,000 C.F.							944' Pittsburgh 6'
Rock Pressure	402 lbs. 12 hrs.							
Oil	Pay shut off by Packer							

Rock	Dk	H		20	Broken Lime	Pink	M	1020	1040
Slate	Lt	S	20	35	Pink Rock		M	1040	1065
Limestone			35	40	Limo	Lt	H	1065	1075
Slate Shells			40	100	Red Rock		S	1075	1163
Red Rock		S	100	102	Shalo	Gr	S	1163	1195
Slate	Lt	S	102	120	Lime	Lt	H	1195	1205
Limestone	Lt	H	120	135	Slate	Gr	S	1205	1210
Slate & Shells			135	200	Red Rock		S	1210	1240
Limestone	Lt	H	200	215	Slate	Gr	S	1240	1270
Slate & Shells			215	260	Red Rock		S	1270	1285
Limestone	Lt	S	260	280	Sand	Wh	H	1285	1293 <i>Mountsville</i>
Slate	Dk		280	290	Shalo	Gr	S	1293	1345
Limo	Lt	H	290	300	L. Dunkard	Gr	H	1345	1385
Slate	Lt	H	300	320	Slate	Dk	S	1385	1419
Red Rock		S	320	330	Big Dunkard	Lt		1419	1464
Slate	Dk	S	330	345					
Lime	Lt	H	345	360	Gas 1436-1439				
Slate	Dk	S	360	380	Show of Oil 1450-1460				
Lime	Lt	H	380	395	(Oil pay shut off by 2nd packer)				
Slate	Dk	S	395	405					
Red Rock		S	405	420					
Slate	Lt	S	420	445					
Gritty Lime	Lt	H	445	460					
Slate	Dk	S	460	470					
Gritty Lime	Lt	H	470	485					
Slate	Dk	S	485	490					
Limo	Lt	H	490	508					
Slate	Dk	S	508	538					
Coal	Dk	S	538	541					
Slate & Shells			541	610					
Wbg. Coal	Dk	S	610	615					
Slate & Shale	Dk	S	615	630					
Gritty Lime	Lt	H	630	650					
Red Rock		S	650	660					
Lime	Lt	H	660	700					
Red Rock	Dk	S	700	710					
Lime	Lt	H	710	844					
Mapletown Coal	Dk	S	844	850					
Slate	Dk	S	850	855					
Lime	Lt	H	855	867					
Slate	Dk	S	867	875					
Lime	Lt	H	875	906					
Coal	Dk	S	906	908	Show of gas				
Lime	Lt	H	908	925					
Shale	Dk	S	925	944					
- Pitts. Coal	Dk	S	944	950					
Lime	Lt	H	950	975					
Red Rock		S	975	980					
Lime	Lt	M	980	1005					
Slate	Lt	S	1005	1020					