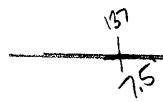


LATITUDE 39° 40' 00"

79° 57' 30"

LONGITUDE



7.5 OGIS topo location

7.5' 10c	<u>2.23S</u>	15' 10c	<u>2.23S</u>
	<u>0.44W</u>	(calc.)	<u>2.44W</u>

Company _____

Farm _____

Quad Morgantown N WC

County Monongalia

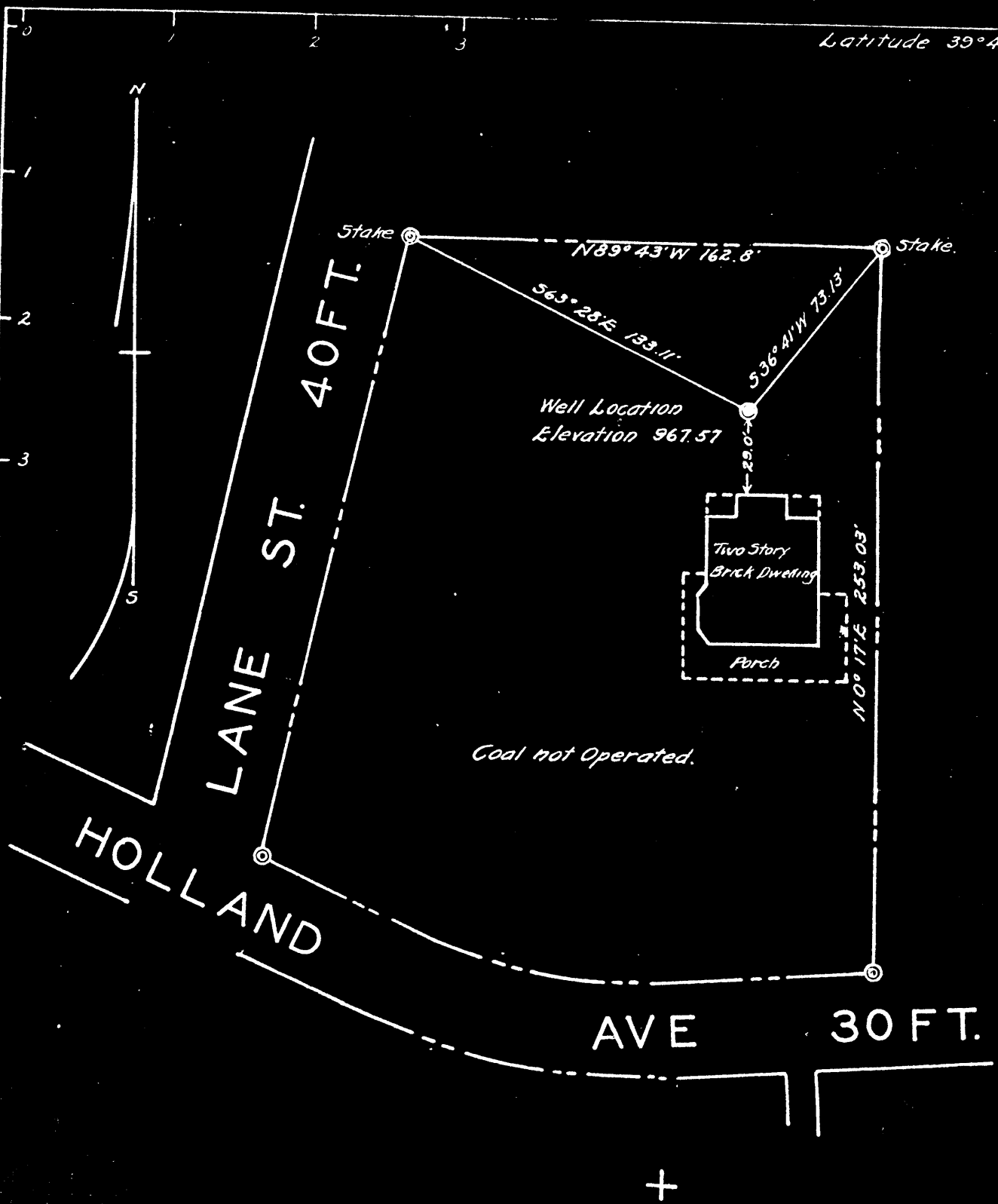
District Morgan

WELL LOCATION MAP

File No. 061-137

Latitude 39°45'

Longitude 79°55'



Company RAYMER W. BARKER
 Address HOLLAND AVE., MORGANTOWN, W. VA.
 Farm 2 LOTS, HOLLAND AVE., WESTOVER.
 Tract 1 Acres lots Lease No. _____
 Well (Farm No.) 1 Serial No. 1
 Quadrangle MORGANTOWN.
 County MONONGALIA
 District GRANT.
 Engineer Paul W. Weaver
 Engineer's Registration No. 380
 File No. 1-190-147 Drawing No. 5323.
 Date June 21, 1941. Scale 1" = 50'

STATE OF WEST VIRGINIA
 DEPARTMENT OF MINES
 OIL AND GAS DIVISION
 CHARLESTON

WELL LOCATION MAP
 FILE NO. MON-137

+ Denotes location of well on United States Topographic Maps, scale 1" to 62,500, Latitude and Longitude being represented by border lines as shown.

- Denotes one inch spaces on border line of original tracing.