

**Latitude**

**Longitude**

2.71s  
2.11w

**Topo Location**

7.5' Loc. \_\_\_\_\_ 15' Loc. \_\_\_\_\_  
(calc.) \_\_\_\_\_

**Company** Roy Clavis

**Farm** Della Kennedy #2

**15' Quad** \_\_\_\_\_  
(sec.)

**7.5' Quad** Blacksville

**District** Clay

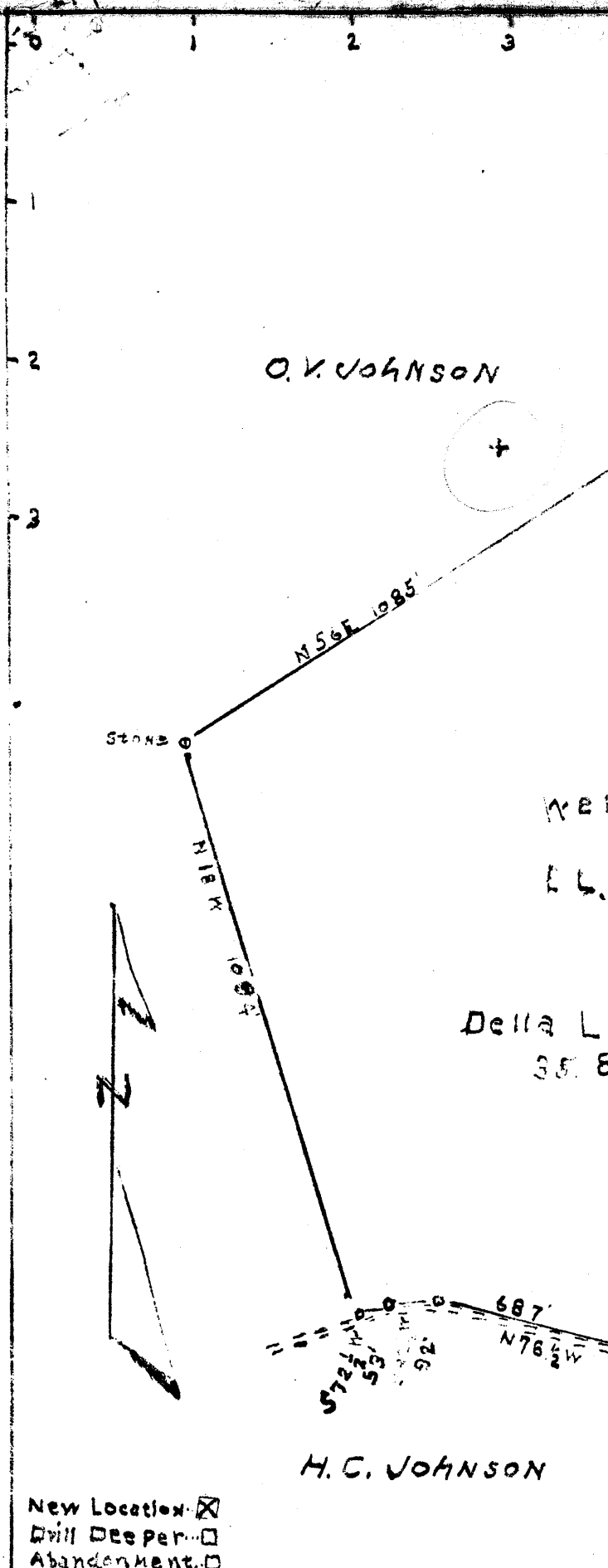
**WELL LOCATION PLAT**

**County** Obel **Permit** 132

08140508

Latitude 39° 45'

Longitude 80° 05'



Well No. 2  
 865'  
 E.L. 1072  
 N 83 1/2 W 810'

Della Lemley  
 35.8A

*Handwritten notes:*  
 4.77  
 2.75  
 2.00

New Location   
 Drill Deeper   
 Abandonment

COMPANY Roy W. Clovis  
 Address WAYNESBURG PA.  
 FARM Della Lemley  
 Tract \_\_\_\_\_ Acres 35.8 Lease No. 5  
 Well (Farm) No. 2 Serial No. \_\_\_\_\_  
 Elevation Spirit Level 1072  
 Quadrangle Blacksville  
 County Monongalia District Clay  
 Engineer Roy W. Clovis  
 Engineer's Registration No. \_\_\_\_\_  
 File No. \_\_\_\_\_ Drawing No. \_\_\_\_\_  
 Date 6-6-41 Scale 1" = 300'

STATE OF WEST VIRGINIA  
 DEPARTMENT OF MINES  
 OIL AND GAS DIVISION  
 CHARLESTON

WELL LOCATION MAP  
 FILE NO MON-132  
2

+ Denotes location of well on United States Topographic Maps, scale 1 To 62,500 latitude and longitude lines being represented by border lines as shown.  
 - Denotes one inch spaces on borderline of original tracing.

WEST VIRGINIA DEPARTMENT OF MINES  
OIL & GAS DIVISION  
W E L L R E C O R D

Permit No. Mon-132  
Blacksville Quad.  
Company  
Address  
Farm  
Location  
Well No  
District  
Surface  
Commenced  
Completed  
Shot  
Fresh Water  
Salt Water

Roy W. Clovis  
Waynesburg, Pa.  
Della Lemley Acres 35.7  
Dunkard Creek  
2 Elev. 1072  
Clay Monongalia County  
~~Della Lemley, Pentress, W. Va.~~  
6-25-41  
7-27-41  
Not shot  
H.F. 115 ft.  
1367-1387-1397 Ft.

Dry

Casing & Tubing  
8 $\frac{1}{2}$  354'2" 354'2"  
6-5/8 708 708  
Coal 330'  
588  
670

Soil	yl	s	0	12	Slate	gn	s	1173	1190
Lime	gy	m	12	20	Lime	gy	m	1190	1200
Slate	lt	s	20	60	Slate	gy	m	1200	1220
Lime	gy	m	60	75	Lime	gy	m	1220	1236
Slate	gy	s	75	130HPW 115'	Slate	lt	s	1236	1303
Lime	gy	m	130	140	Sand	gy	h	1303	1328
Slate	bk	s	140	185	Slate	dk	s	1328	1352
Lime	gy	m	185	200	Lime	gy	h	1352	1362
Slate	dk	s	200	220	<del>Sand-Gas Show</del> wh	h	1362	1400	
Lime	gy	m	220	230	Gas Show		1367	$\frac{1}{2}$ BW 1367	
Slate	dk	s	230	255				1 BW 1387	
Slate	bl	s	255	267				5 BW 1397	
Sand	lt	m	267	314					
Slate	dk	s	314	330					
Coal	bk	s	330	334					
Slate	lt	s	334	350					
Lime	lt	m	350	362					
Slate	lt	s	362	368					
Lime	gy	h	368	395					
Slate	dk	m	395	444					
Lime	gy	m	444	539					
Sand	lt	s	539	581					
Slate	dk	s	581	588					
Coal	bk	s	588	594 2BPH					
Slate	dk	s	594	600					
Lime	gy	m	600	614					
Slate	lt	s	614	618					
Lime	gy	h	618	642					
Slate	dk	s	642	648					
Lime	gy	h	648	657					
Slate	dk	s	657	670HPW 670'					
Coal	bk	s	670	677					
Slate	dk	m	677	702					
Lime	lt	m	702	712					
Slate	dk	m	712	718					
Lime	gy	m	718	723					
Slate	dk	s	723	728					
Lime	gy	m	728	738					
Slate	bl	s	738	743					
Lime	gy	m	743	765					
Slate	dk	s	765	773					
Lime	gy	m	773	783					
Slate	dk	m	783	854					
Lime	bk	m	854	895					
Slate	gy	m	895	928					
Red Rock	rd	s	928	952					
Slate	dk	m	952	971					
Red Rock	rd	s	971	988					
Slate	bl	s	988	998					
Lime	gy	h	998	1005					
Slate	dk	m	1005	1028					
Sand	gy	h	1028	1075 <i>Monksville</i>					
Slate	dk	m	1075	1100					
Sand	lt	m	1100	1137 <i>L. Dunkard</i>					
Slate	lt	m	1137	1146					
Lime	dk	h	1146	1173					