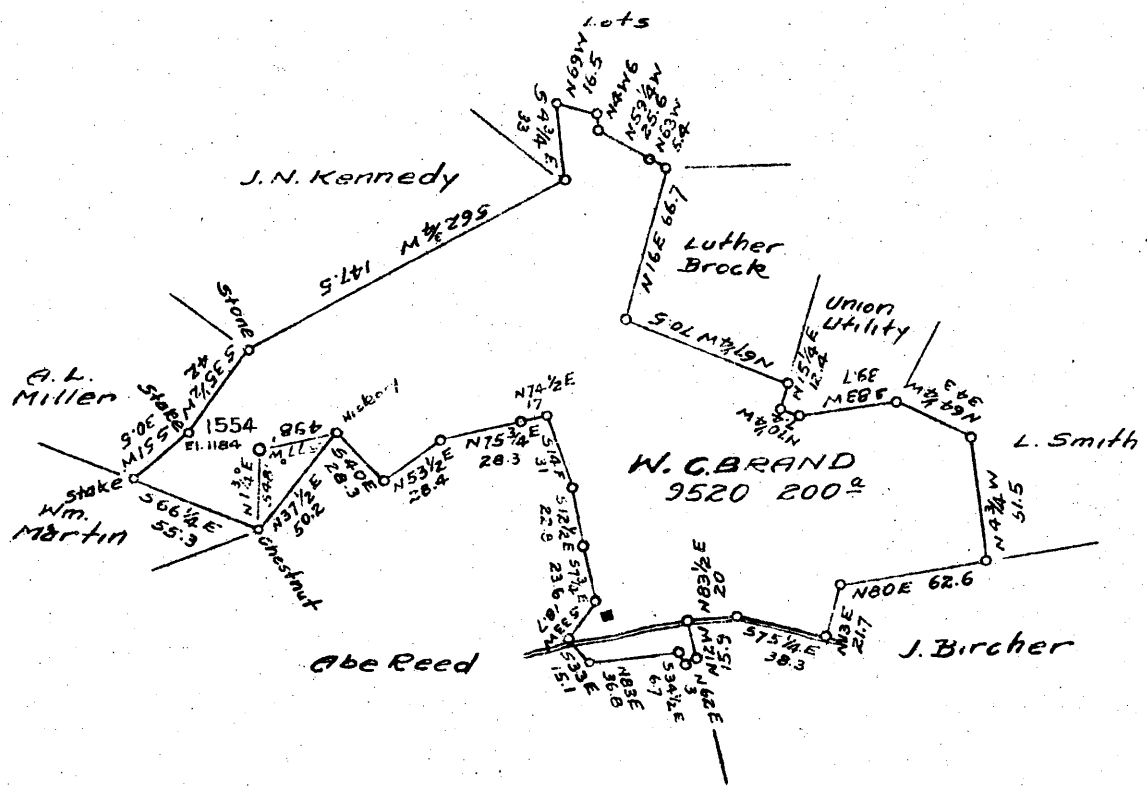


Latitude 39 40

Longitude 80 00



W-203  
W-208  
5-0.40

New Location X  
 Drill Deeper   
 Abandonment

Company CARNEGIE NATURAL GAS  
 Address PITTSBURGH, PA.  
 Farm W. C. BRAND  
 Tract \_\_\_\_\_ Acres 200 Lease No. E-952058  
 Well (Farm) No. 1 Serial No. 1554  
 Elevation (Spirit Level) 1184  
 Quadrangle BLACKSVILLE N.E.C.  
 County MONONGALIA District: (CASS) Grant  
 Engineer R. L. SWEENEY  
 Engineer's Registration No. \_\_\_\_\_  
 File No. \_\_\_\_\_ Drawing No. \_\_\_\_\_  
 Date 1-16-41 Scale 1" = 80 rods

STATE OF WEST VIRGINIA  
 DEPARTMENT OF MINES  
 OIL AND GAS DIVISION  
 CHARLESTON

WELL LOCATION MAP  
 FILE NO. MON-127

+ Denotes location of well on United States Topographic Maps, scale 1 to 62,500, latitude and longitude lines being represented by border lines as shown.  
 - Denotes one inch spaces on border line of original tracing.

*lost data*

WEST VIRGINIA DEPARTMENT OF MINES  
OIL & GAS DIVISION  
W E L L R E C O R D

Permit No. Mon-127  
Blacksville N. E. Quad.

Gas Well

CASING & TUBING

13	295	295
10	409	409
8-1/4	1223	1223
6-5/8	1636	1636

Packer - OWS Bottom Hole  
Size - 6-5/8-20#x8-1/4  
10" Rubber  
Depth set - 1636

CASING CEMENTED:

409'	10"
295'	13"

Mapletown Coal	282-288
Pittsburgh "	368-378
Freeport "	1180-1185

Company                   Carnegie Natural Gas Co.  
Address                 1014 Frick Bldg., Pittsburgh, Pa.  
Farm                    W. C. Brand   ACRES 200  
Location                Br. of Scott Run  
Well No.                1 - E-1554   ELEV. Bar 1184  
Districts               Cass & Grant - Monongalia County  
Surface & Mineral     See below  
Commenced             March 22, 1941  
Completed             April 30, 1941  
Shot                    -  
Open Flow              74/10ths W in 2"  
Volume                 362,600 c.f.  
Rock Pressure         79 lbs. 1 hr.  
Fresh Water            40 enough to drill - HF at 90  
Salt Water             1295 - 2 BPH - 1330-1335 Hole full

Clay	yl	s	0	15	✓	Slate	dk	s	1097	1105	
Slate	lt	s	15	47	FW 40	1st Salt Sd	dk	h	1105	1120	Formation broken
Lime	lt	m	47	65							
Slate	dk	s	65	98	FW 90 HF	Slate	dk	s	1120	1128	
Lime	lt	m	98	120		Sand	dk	h	1128	1135	
Slate	dk	s	120	150		Slate	dk	s	1135	1163	
Lime	lt	h	150	172		Sand	lt	h	1163	1180	
Slate	lt	s	172	198		Freeport Coal	bk	s	1180	1185	clarified?
Lime	lt	h	198	245		Slate	lt	s	1185	1206	Rn Stl
Slate	lt	s	245	268		2nd Salt Sd	lt	h	1206	1235	Line 1223
Lime	lt	h	268	275		Slate	dk	s	1235	1250	
Slate	dk	s	275	282		3rd Salt Sd	lt	h	1250	1432	SW 1295
Mapletown Coal	bk	s	282	288		Slate	dk	s	1432	1450	SW 1330-1335 HF
Lime	lt	h	288	357		Lime	lt	h	1450	1465	
Slate	dk	s	357	368		Slate	wh	s	1465	1484	
Phg. Coal	bk	s	368	378		Rock	rd	s	1484	1540	
Slate	dk	s	378	395		Lime	wh	h	1540	1580	
Lime	lt	h	395	438		Slate	bk	s	1580	1598	
Slate	lt	s	438	470		Little Lime	lt	h	1604	1615	
Lime	lt	m	470	497		Pencil Cave	dk	s	1615	1623	
Slate	dk	s	497	518		Big Lime	lt	h	1623	1715	Break in
Lime	lt	h	518	538							Big Lime
Rock	rd	s	538	560							1648-50
Lime	dk	h	560	568		Big Injun Sd	lt	h	1715	1838	
Rock	rd	s	568	577		Slate	dk	s	1838	1841	Run Stl
Lime	lt	h	577	590							Line 1636
Slate	lt	s	590	617		Total Depth				1841	
Sand	lt	s	617	642		Gas 1795-1800	5/10 W in 1"		23,560	c.f.	
Slate	lt	s	642	685		" 1825-1832	74/10 W in 2"		362,600	c.f.	
Rock	rd	s	685	700		Run Stl	Line 1812				
Slate	lt	s	700	719							
? Little Dunkard	lt	h	719	730	Mondeville						
Slate	dk	s	730	742		OWNERS OF MINERAL RIGHTS:					
Lime	lt	h	742	760		Grace Linger Brand, Morgantown, W. Va.					
Slate	lt	s	760	785		Ella B. Parker, Maidsville, W. Va.					
Rock	rd	s	785	800		John Dale Brand, Mt. Morris, Pa.					
Big Dunkard	lt	h	800	832	Big Dunkard	OWNERS OF SURFACE:					
Slate	dk	s	832	837		Ora S. Bircher, Jero, W. Va.					
Lime	lt	h	837	878		Second Nat'l Bank of Morgantown,					
Rock	rd	s	878	890		Mr. John H. Hoffman, Recciver,					
Lime	lt	h	890	900		Morgantown, W. Va.					
Rock	rd	s	900	915							
Lime	lt	h	915	925							
Sand	lt	s	925	1008	Upper Freeport 55						
Slate	dk	s	1008	1022							
Gas Sand	lt	h	1022	1097							