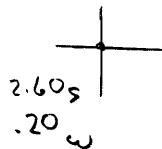


Latitude

Longitude



Topo Location

7.5' Loc. _____ 15' Loc. _____
 _____ (calc.) _____

Company Owens Illinois Glass Co

Farm Luther Howell

15' Quad _____
(sec.)

7.5' Quad Grant Town

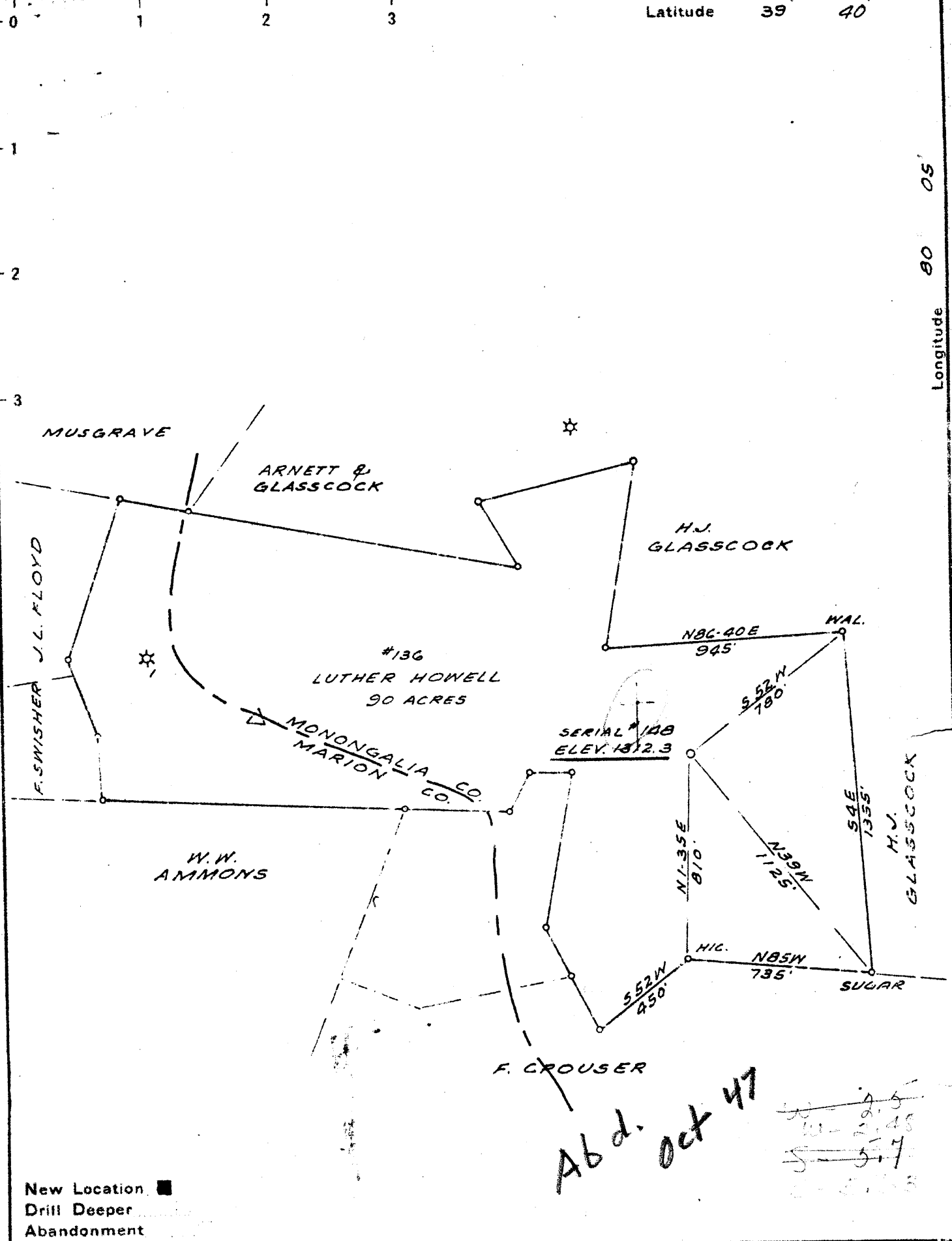
District Clay

WELL LOCATION PLAT

County 061 Permit 121

Latitude 39 40

Longitude 80 05



New Location ■
 Drill Deeper ○
 Abandonment □

Company OMENS ILLINOIS GLASS CO. GAS DEPT.
 Address BOX 1375 CHARLESTON, W. VA.
 Farm LUTHER HOWELL
 Tract _____ Acres 90 Lease No. 136
 Well (Farm) No. TWO Serial No. 149
 Elevation (Spirit Level) 1312.3
 Quadrangle BLACKSVILLE
 County MONONGALIA District GRANT
 Engineer _____
 Engineer's Registration No. 269
 File No. _____ Drawing No. _____
 Date AUG. 30, 1940 Scale 1" = 500'

STATE OF WEST VIRGINIA
 DEPARTMENT OF MINES
 OIL AND GAS DIVISION
 CHARLESTON
WELL LOCATION MAP
 FILE NO. MON-121

+ Denotes location of well on United States Topographic Maps, scale 1 to 62,500, latitude and longitude lines being represented by border lines as shown.
 - Denotes one inch spaces on border line of original tracing

WEST VIRGINIA DEPARTMENT OF MINES
OIL & GAS DIVISION
W E L L R E C O R D

Permit No. Mon-121
Blacksville Quad.

Gas Well

		CASING & TUBING		
Company	Owens, Illinois Glass Co., Gas Dept.,	13	16	16
Address	P. O. Box 1375, Charleston, W. Va.	10	639	639
Farm	Luther Howell ACRES 90	8-1/4	1721	1721
Location	Indian Creek	6-5/8	1913	1913
Well No.	148 ELEV. 1312			
District	Grant - Monongalia County			
Surface & Mineral Address	Chas. R. Martin			
Commenced	Sept. 28, 1940			
Completed	Dec. 19, 1940			
Shot	12/12/40 - depth 2049-2060			
Volume	21,000 c.f.			
Rock Pressure	23 lbs. 24 hrs.			
Water	-			

<p>Surface, Gravels & Clay yl s 0 27</p> <p>Lime gr s 27 33</p> <p>Lime gr h 33 53</p> <p>Lime Shells & Slate dk m 53 76</p> <p>Lime wh&gr h&m 76 111</p> <p>Gritty Lime gr m&h 111 145</p> <p>Slate dk s 145 155</p> <p>Lime gr&wh h 155 214 FW 185</p> <p>Coal bk s 214 219 4 1/2 BPH</p> <p>Slate gr s 219 226</p> <p>Sand gr mh 226 261</p> <p>Lime wh h 261 271</p> <p>Slate gr s 271 276</p> <p>Lime gr&wh h 276 327</p> <p>Slate wh s 327 345</p> <p>Lime gr&wh h 345 369</p> <p>Slate pk&gr s 369 399</p> <p>Lime wh hm 399 419</p> <p>Slate gr ms 419 423</p> <p>Lime wh h 423 433</p> <p>Slate dk s 433 435</p> <p>Lime gr h 435 470</p> <p>Sand wh h 470 513</p> <p>Sand wh s 513 517</p> <p>Mapletown. Coal bk s 517 521</p> <p>Slate dk s 521 531</p> <p>Lime wh h 531 539</p> <p>Slate wh s 539 544</p> <p>Lime gr&wh h 544 571</p> <p>Slate dk s 571 574</p> <p>Lime wh mh 574 586</p> <p>Sand gr m 586 603</p> <p>Pgh. Coal bk s 603 609</p> <p>Slate wh s 609 620</p> <p>Lime wh mh 620 649</p> <p>Lime Shells & Slate wh m 649 674</p> <p>Gritty Lime wh h 674 702</p> <p>Slate wh s 702 727</p> <p>Lime wh h 727 738</p> <p>Sand wh h 738 756</p> <p>Sand wh h 756 776</p> <p>Shale dk s 776 793</p> <p>Sand wh hs 793 833 <i>Murphy</i></p> <p>Lime wh h 833 847</p> <p>Slate gr s 847 871</p>		<p>Sand <i>Murphy</i> wh h 871 896</p> <p>Slate gr&wh s 896 935</p> <p>Red Rock s 935 955</p> <p>Slate gr s 955 985</p> <p>Sand gr h 985 1006 <i>L. Dunkard?</i></p> <p>Slate pk s 1006 1021</p> <p>Slate & Lime Shells gr m 1021 1044</p> <p>Red Rock s 1044 1054</p> <p>Lime gr h 1054 1058</p> <p>Sand gr s 1058 1080</p> <p>Limestone wh h 1080 1097</p> <p>Slate dk s 1097 1154 <i>Dunkard?</i></p> <p>Lime gr m 1154 1170</p> <p>Slate bn s 1170 1182</p> <p>Lime wh h 1182 1208</p> <p>Slate dk s 1208 1213</p> <p>Lime wh h 1213 1219</p> <p>Slate wh s 1219 1223</p> <p>Lime gr&wh h 1223 1269</p> <p>Sand " " hs 1269 1308</p> <p>Sand Shells & Slate <i>Gas Sand</i> gr hs 1308 1334</p> <p>Slate bk s 1334 1399</p> <p>Sandstone gr&wh h 1399 1416</p> <p>Slate dk s 1416 1426</p> <p>Sand <i>Sand</i> gr hm 1426 1511</p> <p>Slate dk s 1511 1515</p> <p>Sand <i>Sand</i> gr&wh h 1515 1597 FW 1542 1 1/2 BPH FW 1565</p> <p>Lime wh&dk h 1597 1635 5 1/2 BPH</p> <p>Slate&Lime S.lt m 1635 1648</p> <p>Red Rock sm 1648 1703</p> <p>Lime wh h 1703 1705</p> <p>Correction plus 16</p> <p>Lime wh h 1721 1722</p> <p>Red Rock rd s 1722 1758</p> <p>Lime gr hs 1758 1804</p> <p>Sand <i>Mapletown</i> gr h 1804 1848</p> <p>Shale dk s 1848 1860</p> <p>Lime gr h 1860 1872</p> <p>Slate&Shells gr hs 1872 1880</p> <p>Red Rock s 1880 1884</p> <p>Lime gr h 1884 1892</p> <p>Slate <i>P. Cave</i> gr s 1892 1897</p> <p>Lime gr h 1897 1941</p> <p>Correction plus 1</p> <p>Lime gr h 1942 1980 } <i>Big Lime</i></p>
--	--	---

Permit No. Mon-121 - Blacksville Quad.

Company Owens-Illinois Glass Co. Gas Dept.
 Farm Luther Howell ACRES 90
 Well No. 148
 Commenced 9/28/40 - completed 12/12/40

✓ Sand <i>2 1/2'</i>	bn	h			
	gr&wh	ms	1980	2099	G 2049-2055
Slate	wh	s	2099	2121	29,000 c.f.
Lime	gr	hs	2121	2172	
✓ Sand <i>3 1/2'</i>	gr	h	2172	2218	
Slate	wh	s	2218	2220	
Slate & Lime					
Shells	gr	sm	2200	2356	
Lime	gr	m	2356	2367	
Slate&Lime					
Shells	gr	hs	2367	2460	
✓ Sand <i>4'</i>	gr	h	2460	2466	
Slate&Lime					
Shells	gr	hs	2466	2488	
✓ Sand <i>5'</i>	gr	h	2488	2530	
Slate	wh	s	2530	2539	
✓ Sand <i>5 1/2'</i>	gr	mh	2539	2567	
Slate&Shells	wh	s	2567	2576	
Sand	gr	h	2576	2579	
Slate	dk	s	2579	2583	
Sand	gr	h	2583	2599	
Slate &					
Sand Shells	gr	s	2599	2627	
Slate	pk	s	2627	2632	
Sand	gr	h	2632	2639	
Slate	pk	s	2639	2645	
Sand	gr	h	2645	2677	
Slate	wh	s	2677	2682	
Slate & Sand					
Shells	gr	hs	2682	2696	
Slate	gr	s	2696	2706	
Sand	gr	h	2706	2715	
Red Rock		s	2715	2727	
Red Rock &					
Lime Shells	rd	s	2727	2752	
Lime	gr	h	2752	2771	
Red Rock	rd	s	2771	2783	
Lime	gr	h	2783	2796	
Lime Shells					
& Slate	rd	hs	2796	2810	
Lime	Gr	h	2810	2825	
Red Rock &					
Shells	rd&gr	s	2825	2862	
Lime	gr	h	2862	2877	
Sand	gr	h	2877	2888	
Slate	gr	s	2888	2893	
Lime	gr	h	2893	2909	
Red Rock		s	2909	2920	
Lime	gr	h	2920	2922	
Slate	gr	s	2922	2931	
✓ Sand <i>4 1/2'</i>	gr	h	2931	2951	
Slate	gr&wh	s	2951	2985	
Correction plus					
				4	
Lime	gr	h	2989	2991	
Slate	wh&gr	s	2991	2997	
✓ Sand	gr	hm	2997	3049	
Slate	wh	s	3049	3057	
Lime	wh	h	3057	3059	
Slate	wh	s	3059	3065	
Total Depth					
				3065	
Hole plugged back to 2060 ft. and shot from 2049-2060					
After shot it was cleaned out to 2080 ft.					
Present Total Depth					
				2080	