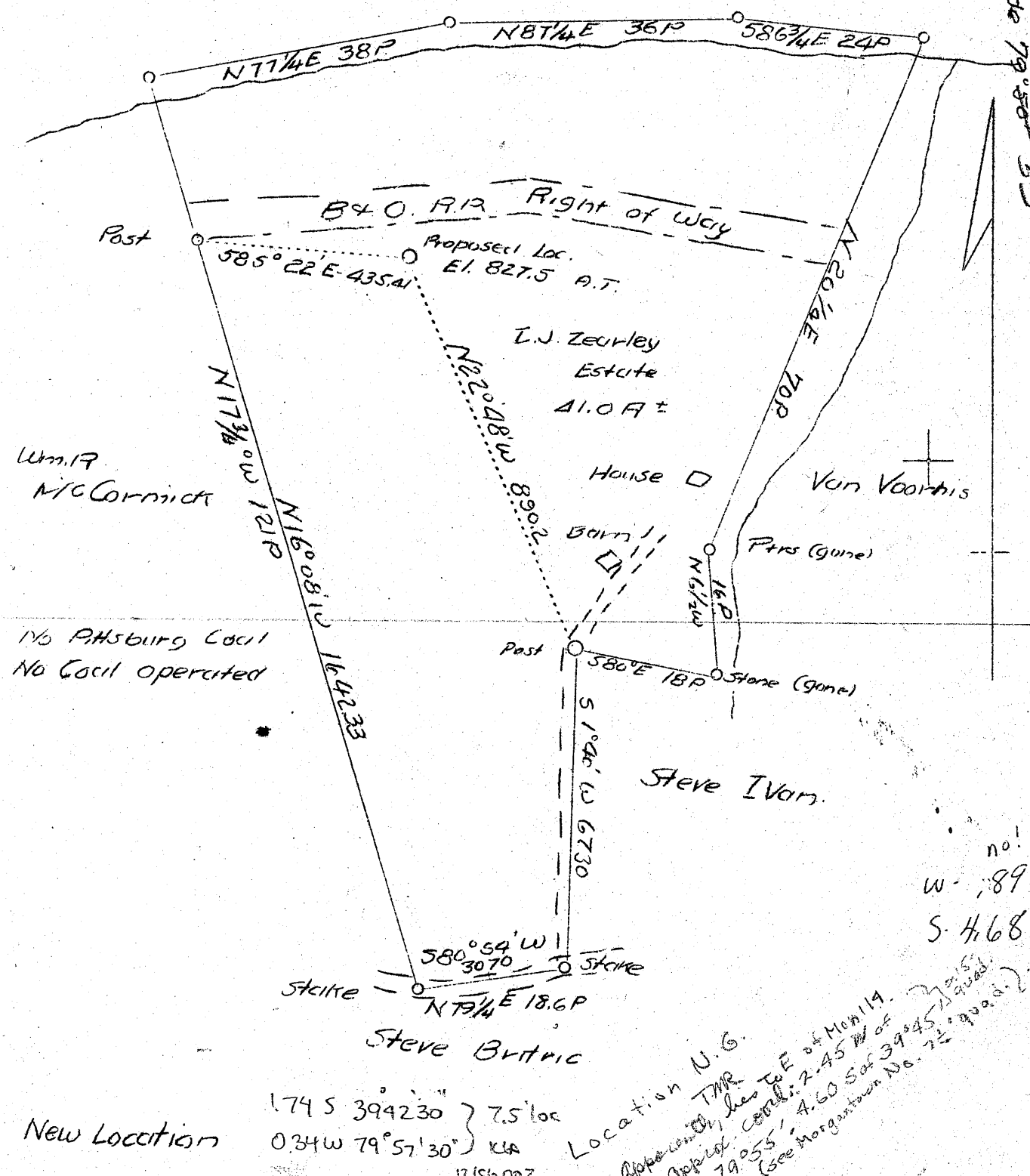


Latitude 39° 45'

Longitude 79° 58' 53"

MOMONGAHELA RIVER



no!
W-89
S-468

New Location

174 S 39 42 30 } 7.5' loc
0 34 W 79 57 30 } KLA
12/18/03

Location N.G.
App. loc. TMR, less 1/4 E of Mon 14.
Opp. loc. Cont. 2.45 W of
79 055' A. 60 S of 39 45' 11' 11" road.
(See Morgantown No. 22 000.2)

Company	Monongalia Oil & Gas Co.
Address	Morgantown, W. Va.
Farm	I. J. Zearly Estate
Tract	1
Acres	41
Lease No.	1
Well (Farm) No.	2
Serial No.	W. Va. 1
Elevation	- 820 top map KLA
Quadrangle	Morgantown 12/18/03
County	Monongalia
District	Union
Engineer	G. B. Hartley
Eng. Reg. No.	26
File No.	2-19E-130 Drawing #5240
Date	Aug. 26, 1939
Scale	1" = 300'

STATE OF WEST VIRGINIA
Department of Mines
OIL & GAS DIVISION
Charleston

WELL LOCATION MAP
File No. Mon. 113

x Denotes location of well on U. S. Topographic Maps, scale 1 to 62,500, latitude and longitude lines being represented by border lines as shown.

- Denotes one inch spaces on border line of original tracing.

WEST VIRGINIA DEPARTMENT OF MINES

OIL & GAS DIVISION

W E L L R E C O R D

Permit No. Mon-113

Gas Well

Morgantown Quad.

CASING & TUBING

Company Monongahela Oil & Gas Co. 10 135
 Address 162 Chancery Row, Morgantown, W.Va. 8-1/4 645
 Farm I. Judson Zearley ACRES 41 6-5/8 1018 1018
 Location Monongahela River
 Well No. 2 ELEV. - 820 top - via 12/8/2003 Coal at 548 and 615 ft.
 District Union - Monongalia County
 Surface & Mineral I. Judson Zearley Hrs.
 Address Morgantown, W. Va.
 Commenced Aug. 8, 1939
 Completed Aug. 29, 1939
 Open Flow 4/10ths Water in - inch
 Volume 100,000 c.f.
 Rock Pressure 120 lbs. 12 hrs.
 Water -

Formation Color ^{ft} TOP Base Result Formation Color ^{ft} TOP Base Result

Clay	yel	s	0	10					
Lime	wh	h	10	60					
Murphy Sand	wh	h	60	80					
Slate Lime	wh	m	80	260					
H. Dunkard	wh	h	260	295	Dunkard				
Slate&Shells			235	407					
B. Dunkard	wh	h	407	460	?				
Slate&Shells			460	528					
Gas Sand	wh	h	528	548					
Coal	blk	s	548	552					
Slate		s	552	558					
1st Salt S.		h	558	615					
Coal	blk	s	615	617					
2nd Salt S.	wh	h	617	736					
Slate&Lime	wh	m	736	860					
Red Rock	red	s	860	890					
Slate&Lime	wh	s	890	975					
Stray Sand		h	975	998					
Big Lime	wh	h	998	1045					
Slate&Lime&RedRock		s	1045	1082					
Big Injuns	buff	h	1082	1190	1st gas	1146			
Slate		s	1190	1195	2nd gas	1174			
Total Depth				1195					