

LATITUDE 39°45'  
39°42'20"

80°20'30"

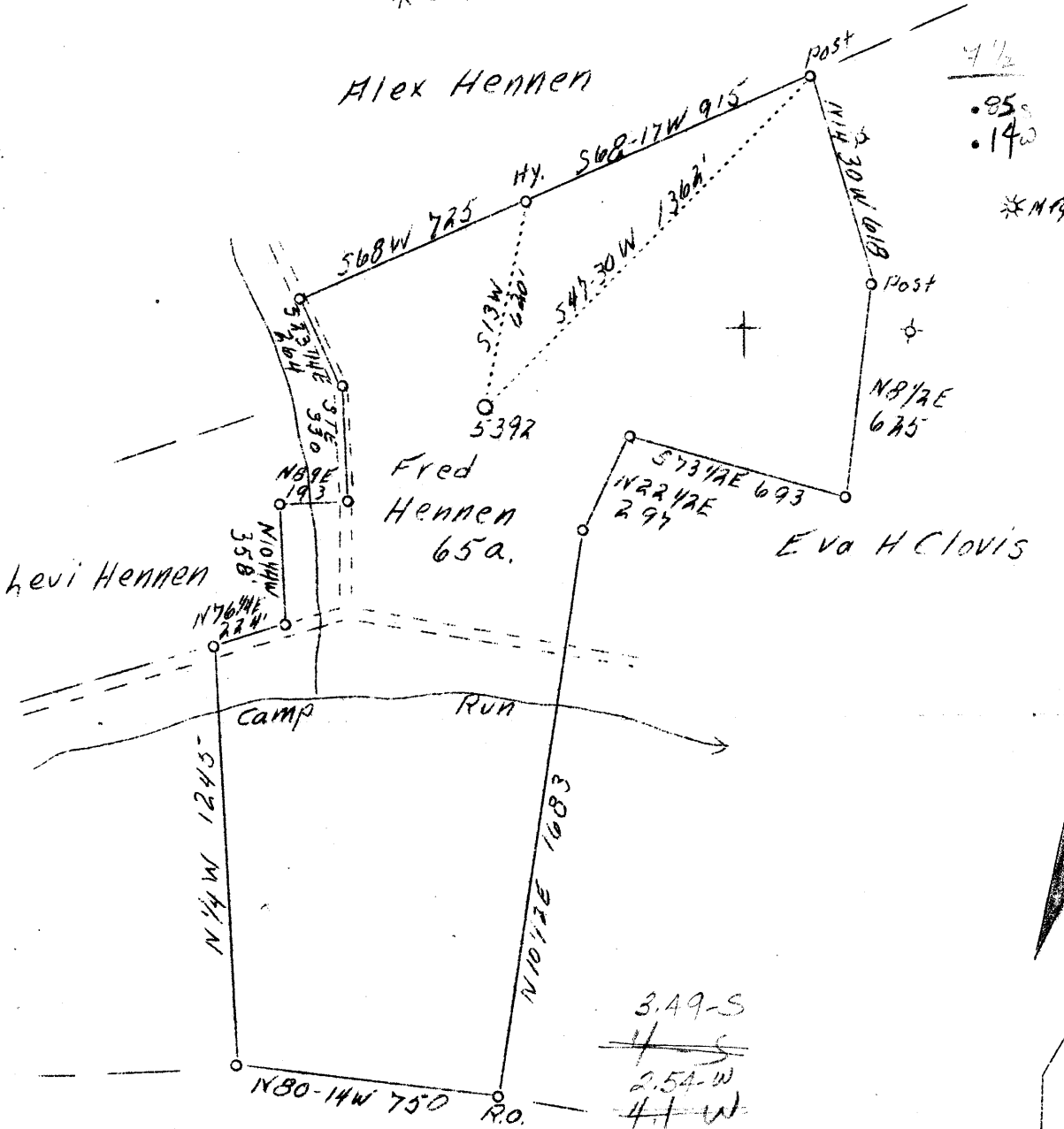
LONGITUDE 80°20'

\* 5393

Alex Hennen

7 1/2  
.85  
.140

\* M.F. Co.



3.49-S  
~~4-S~~  
2.54-W  
~~4-W~~

Abd. sept 40

Drill Deeper

Company	Pittsburgh & W. Va. Gas Co.	STATE OF WEST VIRGINIA
Address	Union Bank, Clarksburg, W.Va.	Department of Mines
Farm	C. E. Hennen	OIL & GAS DIVISION
Acres	65.6	Charleston
Lease No.	21206	
Well (Farm) No.	1	WELL LOCATION MAP
Serial No.	5392	File No. <u>MOA-111</u>
Elevation (SL)	1245	
Quadrangle	Mannington N. W. 2-4	x Denotes location of well on U. S. Topo-
County	Monongalia <i>Hundred 7 1/2</i>	graphic Maps, scale 1 to 62,500, latitude
District	Battelle	and longitude lines being represented by
Engineer	James D. Jeffries	border lines as shown.
Eng. Reg. No.	-	- Denotes one inch spaces on border line
Date	March 12, 1939	of original tracing.
Scale	1" = 500'	

WEST VIRGINIA DEPARTMENT OF MINES

OIL & GAS DIVISION

WELL RECORD

Permit No. Mon-111

Gas Well

Mannington Quad.

CASING & TUBING

Company Pgh. & W. Va. Gas Co.,  
 Address Clarksburg, W. Va.  
 Farm C. E. Hennen, et al ACRES 70  
 Location Mann. N/W 2-4  
 Well No. 5392 ELEV. 1245  
 District Battelle - Monongalia County  
 Surface Mrs. Georgia Henne, Burton, W. Va.  
 Mineral C. E. Hennen, et al, Fairmont, W. Va.  
 Drilling commenced May 9, 1939  
 Drilling completed June 3, 1939  
 Open Flow 12/10ths Water in 2"  
 Volume 168,000 c.f.  
 Rock Pressure 485 lbs. 10 hrs.

Formation Color <sup>MAX</sup> Top Base Result Formation Color <sup>MAX</sup> Top Base Result

Began drilling deeper at			2386						
Big Injun <sup>s</sup> wh	h	2265	2499						
Slate-Shells blk	sh	2499	2686						
Lime drk	h	2386	2698						
Slate-Shells "	sh	2698	2792						
Lime "	h	2792	2836						
Slate-Sand "	sh	2836	2851						
Lime "	h	2851	2870						
Slate&Shells "	sh	2870	2943						
Fifty Foot wh	h	2943	3001	Gas 2943	10/10 W 1"				
Slate drk	s	3001	3014	Slate 2972	- 2974				
Thirty Foot wh	h	3014	3059						
Slate-Shells drk	sh	3059	3070						
Pink Rock pink	s	3070	3075						
Slate&Shells drk	hs	3075	3095						
Gordon Stray wh	h	3095	3107						
Slate-Shells drk	hs	3107	3143						
Gordon Sand wh	h	3143	3184						
Slate&Shells drk	s	3184	3218						
4th Sand wh	h	3218	3233	Gas 3225	5/10 W 2"				
Slate-Shells drk	s	3233	3256						
5th Sand wh	h	3256	3281						
Slate&Shells drk	s	3281	3408						
Bayard Sand wh	s	3408	3418	Gas 3408	-10' 20/10 W 2"				
Slate drk	s	3418	3453						
Total Depth			3453						

2265  
 1245  
 1020

3453  
 2386  
 1067

Record of Well No. 5392

Located on C. E. Nunn (Fred) Farm

19

Rattelle

District Monongalia

County W. Va.

State

Division J

District No. 11

Drilled under well Order

Rig built by

Began

19

Completed

19

Well drilled by

Began

19

Completed

19

Depth of Well 2386 feet

Size of Hole 6 5/8

Producing Gas.

Elev: 645

Total Depth 3453

This well purchased from Clavis Oil & Gas Co. Date 1-1929.

CASED WITH

REMARKS

Placed Sept 1940 - By Martin Hauer.

AMOUNT	SIZE	KIND
995'	10"	Pull By Clavis
1410'	8 1/2"	Reclaimed 48 ft 1050 ft
2214'	6 5/8"	" " 108 ft 2150 ft
2386'	2"	Reclaimed 3-1938
2386'	3"	Reclaimed May 4-38.

COAL VEINS Mapletown 875 979  
903 976 992.

FORMATIONS

NAME	TOP	BOTTOM	OIL	GAS	WATER	REMARKS
Big Dunkard	1400	1500				Cleaned out and retaped and
Sand	1645	1770				3" March 1938
1st Salt Sand	1790	1885				to Drill Reeper
2nd Salt Sand	1890	1920			1900	Commenced Repair
Sand	2085	2130				April 26-38.
Little Lime	2130	2200				
Big	2200	2265		2335-42		
Big Duping	2265	2499		2342-56		
Plate of Shales	2499	2686				
Fine	2686	2698				
Plate of Shales	2698	2797				
Fine	2797	2836				
Plate of Shales	2836	2851				
Fine	2851	2870				
Plate of Shales	2870	2943				
Griffy Sand	2943	3001		2948		10/10 2 1/2" of g
Shale	2977	2994				
Plate	3001	3014				
Thirty-foot Sand	3014	3059				
Plate of Shales	3059	3070				
Thin Rock	3070	3175				
Plate of Shales	3175	3195				
Cardon Sand	3195	3197				
Plate of Shales	3107	3117				
Cardon Sand	3148	3184				
Plate of Shales	3184	3218				
Fourth Sand	3218	3253		3225		7/10 2 1/2" of g
Plate of Shales	3253	3256				
Fifth Sand	3256	3281				
Plate of Shales	3281	3408				
Third Sand	3408	3418		3408		20/10 2 1/2" of g
Plate	3418	3433				
Total Depth	3453					

PRESSURE TEST IN

CASING

REMARKS

30 Sec. lbs.  
 1 Min. "  
 2 " "  
 5 " "  
 10 " "  
 15 " "  
 30 " "  
 Rock Pressure " in  
 Taken 19  
 By

Test 8-22-29,  
 2" Tubing,  
 Line 150 1 min. 165.  
 Off 1 min 2-3-4-5-  
 20-40-60-80-100  
 R. P. 525#

WELL TUBED AND PACKED..... 19.....

VIZ:- ~~1- 2" x 6 3/8 Anchor Packers. Released 3-21-38~~  
 March 25-38- 114 Joints of 2" 2386 ft of 3" Tub  
 1- 3 x 6 3/8 anchor packer 9 Joints 140 ft 3 anchor. Pa at 2389-2237

FIRST PRESSURE TEST IN 2" TUBING

REMARKS

*Special test.*  
 30 Sec. 15 lbs.  
 1 Min. 28 "  
 2 " 53 "  
 5 " 76 "  
 10 " 94 "  
 15 " 110 "  
 30/10 " 175 "  
 20 " 258 "  
 Rock Pressure " in  
 Taken Dec. 13-1929. 19  
 By

MATERIAL FOR THIS WELL RECEIVED FROM FOLLOWING SOURCES:

[Empty space for listing material sources]