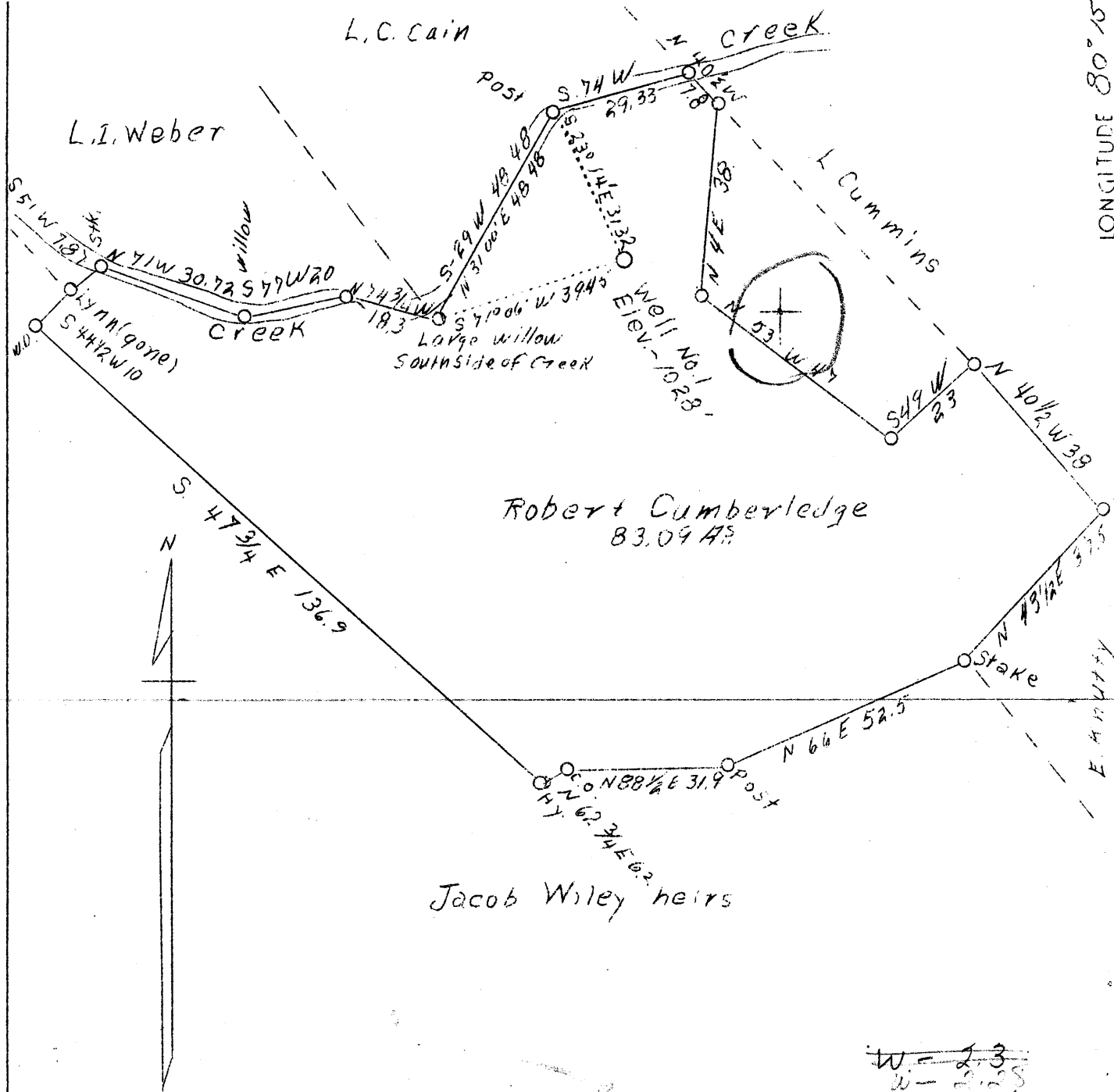


LATITUDE 39° 45'

LONGITUDE 80° 15'



COAL NOT OPERATED

Abd. Aug. 51

W - 2.3
 W - 2.25
 S - 3.22
 S - 3.18

New Location

Company	Jacob Cummins & M. R. Phillips
Address	Blacksville, W. Va.
Farm	Robert Cumberledge
Tract	One
Acres	83.09
Well (Farm) No.	One
Elevation (SP)	1028'
Quadrangle	Mannington <i>NE.</i>
County	Monongalia
District	Battelle
Engineer	A. L. Headley
Eng. Reg. No.	-
Date	Sept. 17, 1938
Scale	1" - 500'

STATE OF WEST VIRGINIA
 Department of Mines
 OIL & GAS DIVISION
 Charleston

WELL LOCATION MAP

File No. MON-110

x Denotes location of well on U. S. Topographic Maps, scale 1 to 62,500, latitude and longitude lines being represented by border lines as shown.

- Denotes one inch spaces on border line of original tracing.

6-0 51

WEST VIRGINIA DEPARTMENT OF MINES

OIL & GAS DIVISION

WELL RECORD

Permit No. Mon-110

Gas Well

Mannington Quad.

CASING & TUBING

Company	J. A. Cummins & M. R. Phillips	10	758	758
Address	Blacksville, W. Va.	8-1/4	1564	1564
Farm	Robert Cumberledge ACRES 100	6-5/8	1944	1944
Location	Dunkard Creek	2	2032	2032
Well No.	One ELEV. -			
District	Battelle, Monongalia County			Anchor Packer
Surface & Mineral	Robt. Cumberledge, Clarksburg, W.Va.			Size -
Drilling commenced	-			Depth set -
Drilling completed	Jan. 4, 1939			
Shot	-			Coal Encountered:
Open Flow	85/10ths Water in 2-inch ^{389 HCF}			630'
Rock Pressure	165 lbs. 24 hrs.			728'
Water	-			

Formation Color ^{HAT} TOP Base Result Formation Color ^{HAT} TOP Base Result

Formation	Color	^{HAT}	TOP	Base	Result	Formation	Color	^{HAT}	TOP	Base	Result
Pittsburgh Coal			728	735							
Murphy Sand?			870	890	Connellsville ss.						
Big Dunkard			1220	1288							
Gas Sand			1370	1460							
1st Salt Sand			1565	1595	Water 1580						
Second Salt			1631	1725							
Pencil Cave			1932	1944							
Big Lime			1944	1992	Gas 1993						
Big Injun Sand			1972								
Total Depth				2032							