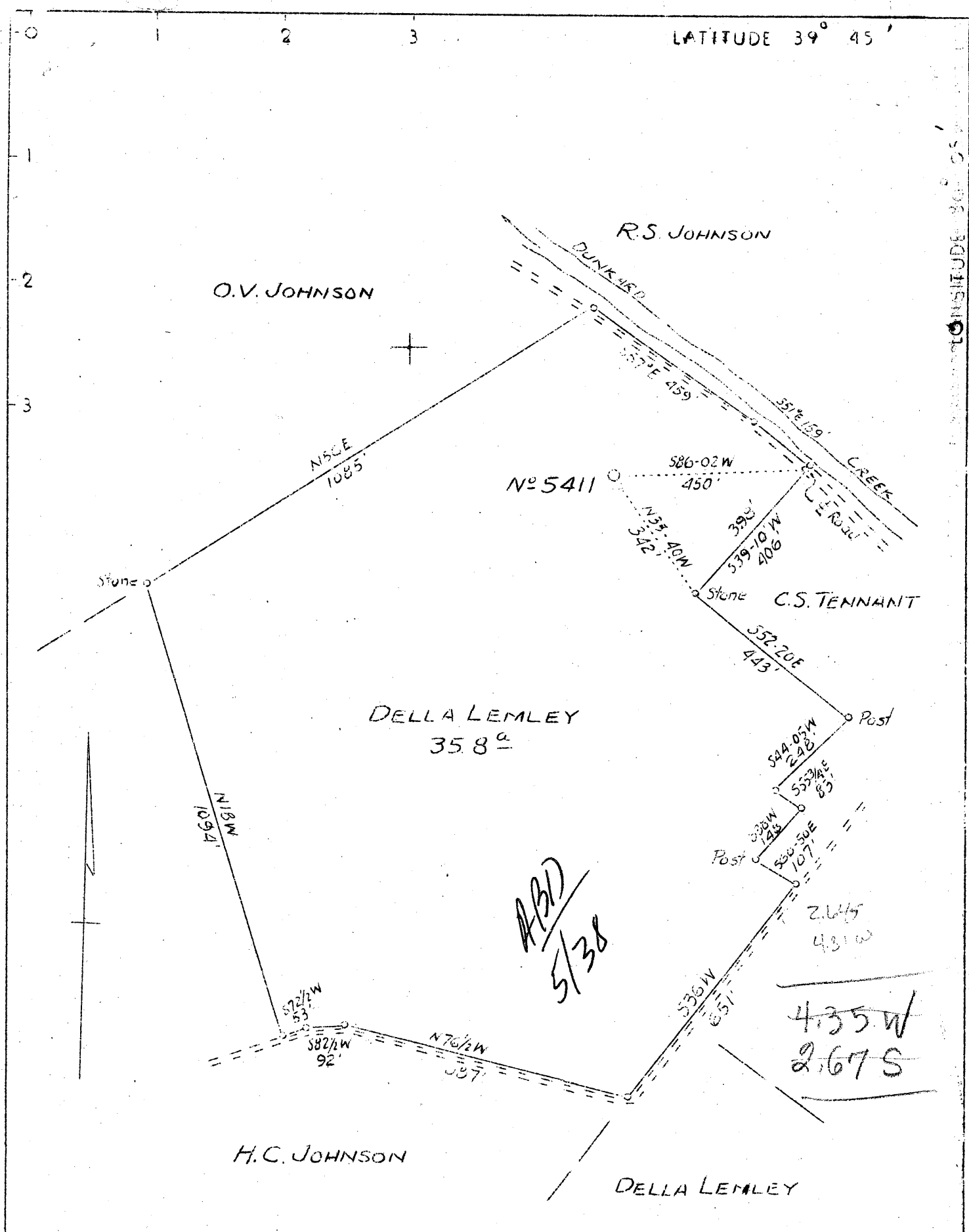


LATITUDE 39° 45'

LONGITUDE 80° 05'



Company	Pittsburgh & W.Va. Gas Co.
Address	608 Union Bank, Clarksburg, W.Va.
Farm	Della Lemley
Tract	Acres 35.8 Lease No. 22112
Well (Farm) No.	1 Serial No. 5411
Elevation (Spirit Level)	977.0.V.A.
Quadrangle	Blacksville, (NC)
County	Monongalia District Clay
Engineer	James D. Jeffries
Engineer's Registration No.	
File No.	Drawing No.
Date	1-5-38 Scale 1"-300'

STATE OF WEST VIRGINIA
 Department of Mines
 OIL AND GAS DIVISION
 CHARLESTON

WELL LOCATION MAP
 File No. MON-103

+ Denotes location of well on United States Topographic Maps, scale 1 to 62,500, latitude and longitude lines being represented by border lines as shown.

— Denotes one inch spaces on border line of original tracing.