

LATITUDE

39 40

08 21 08

LONGITUDE

→ 0615
75' 10"

7'5 OGIS topo location

7.5' loc 0.95S
1.69W

15' loc 0.95S
(calc.) 3.91W

Company _____

Farm _____

Quad Blacksville 15' WC

County _____

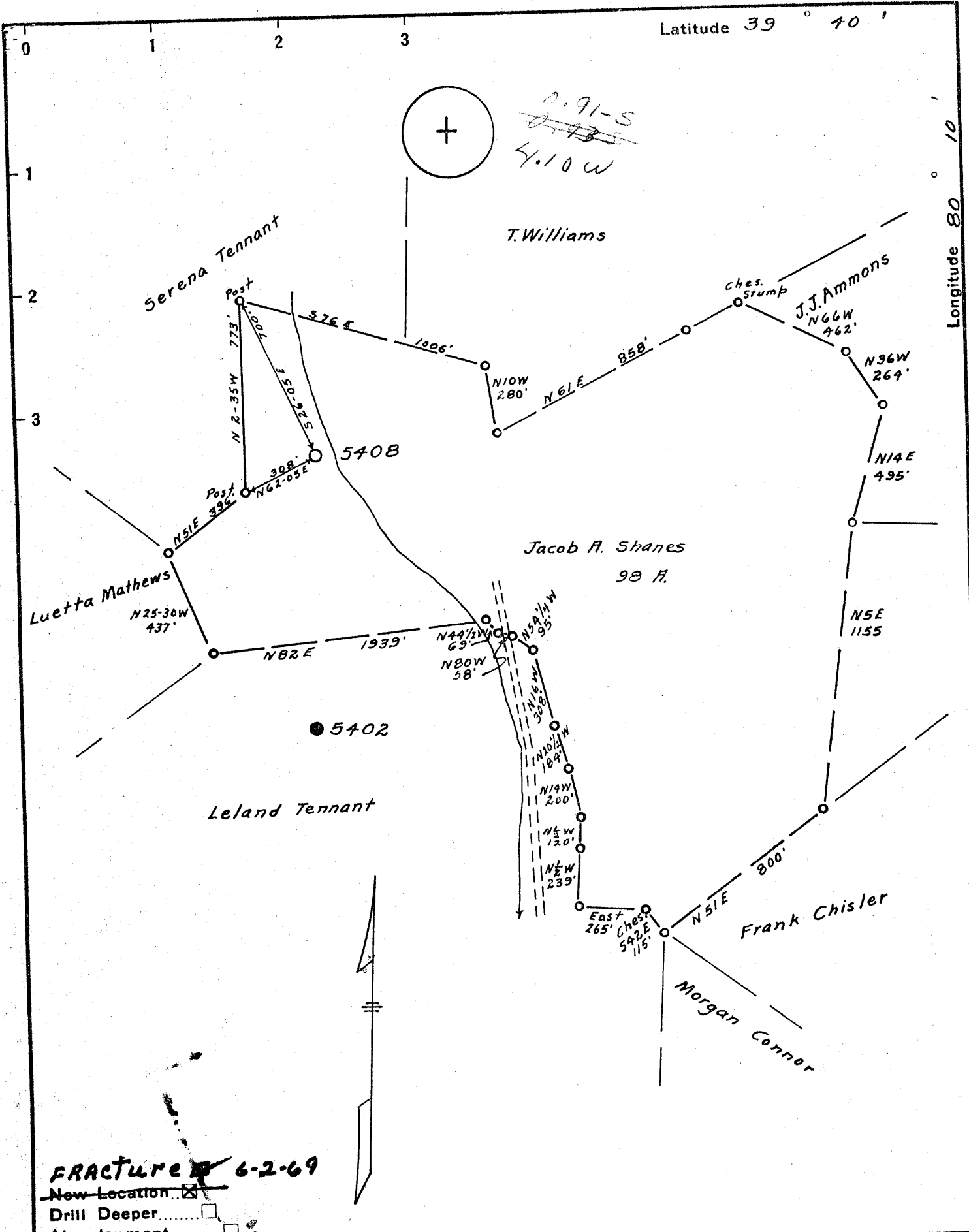
District clay

WELL LOCATION MAP

File No. 000000

Latitude 39° 40'

Longitude 80° 10'



Colonial Oil & Gas Corporation

Company ~~PHILADELPHIA OIL COMPANY~~
1008 Times Sq. Bldg. Rochester, N. Y.

Address ~~608 UNION BANK CLARKSBURG, W. VA.~~

Farm JACOB A. SHANES

Tract _____ Acres 98 Lease No. P.O. 135

Well (Farm) No. 1 Serial No. 5408

Elevation (Spirit Level) 1127 L

Quadrangle BLACKSVILLE N.W. 32

County MONONGALIA District CLAY

Engineer J. B. Bigler

Engineer's Registration No. 764

File No. _____ Drawing No. _____

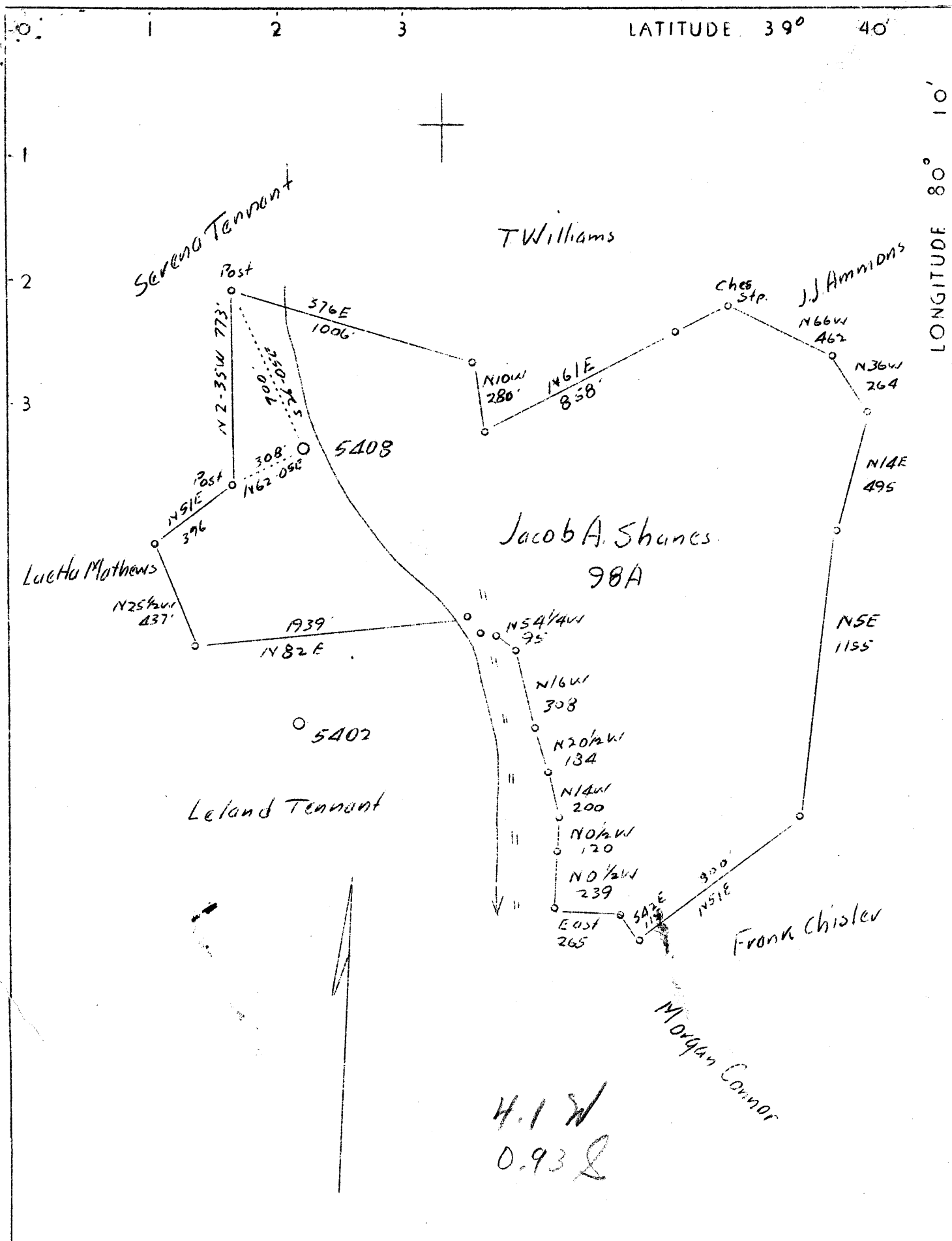
Date 10-18-37 Scale 1" = 500'

STATE OF WEST VIRGINIA
DEPARTMENT OF MINES
OIL AND GAS DIVISION
CHARLESTON

WELL LOCATION MAP
FILE NO. Mon-99-FRAC.

+ Denotes location of well on United States Topographic Maps, scale 1 to 62,500, latitude and longitude lines being represented by border lines as shown.

- Denotes one inch spaces on border line of original tracing.



Company	Philadelphia Oil Co.
Address	608 Union Bank, Clarksburg, W.Va.
Farm	Jacob A. Shanes
Tract	Acres 98 Lease No. P.O. 135
Well (Farm) No.	1 Serial No. 5408
Elevation (Spirit Level)	1127 L
Quadrangle	Blacksville <i>WB</i>
County	Monongalia District Clay
Engineer	T.E. Brigden
Engineer's Registration No.	764
File No.	Drawing No.
Date	10-18-37 Scale 1"-500'

STATE OF WEST VIRGINIA
 Department of Mines
 OIL AND GAS DIVISION
 CHARLESTON

WELL LOCATION MAP
 File No. *MON-99*

+ Denotes location of well on United States Topographic Maps, scale 1 to 62,500, latitude and longitude lines being represented by border lines as shown.

— Denotes one inch spaces on border line of original tracing.

WEST VIRGINIA DEPARTMENT OF MINES

OIL AND GAS DIVISION

WELL RECORD

Oil & Gas Well

Permit No. Mon-99

BLACKSVILLE QUAD.

CASING & TUBING

Company	Philadelphia Oil Co.	Wood Cond.	16	16
Address	Clarksburg, W.Va.	13	126	126
Farm	Jacob A. Shane Acres 98	10	847	847
Location	Blacksville	8 1/4	1648	1648
Well No.	5403 Elev. 1127	6 5/8	2254	2254
District	Clay County Monongalia			
Surface	Jacob A. Shane, R.F.D.#2, Fairview, W.Va.			
Mineral	Same			
Drilling	Commenced Nov. 10, 1937			
	Completed March 14, 1938			
Volume	150,000 Cu.Ft.			
Rock Press.	300# 24 hrs.			
Oil	5 bbls. , 1st 24 hrs.			

Formation Color ^{Hor} Top Base Result					Formation Color ^{Hor} Top Base Result						
Soil	Dark	S	0	12	Water	Slate	Black	S	1616	1625	
Slate-Shells "		S	12	85	20-42	2nd Salt Sand	White	H	1625	1675	Water
Slate	Dark	S	85	105		Slate	Black	S	1675	1689	1665
Red Rock	Red	S	105	115	Water	3rd Salt Sand	White	H	1689	1805	Water
Lime-Slate	White	H&S	115	298	85	Slate & Shells	White	S	1805	1844	1710
Slate	Dark	S	298	375		Red Rock	Red	S	1844	1866	
Bluff Sand	White	H	375	426		Lime	Gray	H	1866	1901	
- Fairview	Coal Bl.	S	426	430		Lime-Shells	Light	H	1901	1948	
Lime	Gray	H	430	450		Slate & Shells	Light	S&H	1948	1987	
Slate-Shells	Gr.	H&S	450	475		Lime	White	H	1987	1997	
Lime	White	H	475	685		Slate		S	1997	2014	
Slate-Lime			685	706		Big Lime	White		2014	2090	S.L.
- M.T. Coal			706	710		Big Injun	White	H	2090	2292	2023'
Lime	White	H	710	770		Slate			2292	2350	Water
Slate	Black	S	770	807	Water	Slate & Shells			2350	2730	2205
- Pgh. Coal		S	807	815	807'	Fifty Foot		H	2730	2800	
Lime-Slate	White	H&S	815	840	S.L.	Slate	Black	S	2800	2811	Gas
Lime	White	H	840	920		Thirty Foot			2811	2832	2740
Slate-Shells	Gr.	S&H	920	960		Slate	White	S	2832	2846	20/10W
Red Rock	Red	S	960	980		Gordon Stray	White	H	2846	2895	8", S.L.
Lime	White	H	980	995		Red Rock	Red	S	2895	2910	2744'
Red Rock	Red	S	995	1013		Gordon Sand	White	Broken	2910	2938	
Lime	White	H	1013	1026		Slate			2938	2952	
Slate	Light	S	1026	1040		Fourth Sand			2952	2972	
Slate-Shells	Wh.	H&S	1040	1068		Red Rock	Red	S	2972	2988	
Red Rock	Red	S	1068	1112		Fifth Sand			2988	3027	Gordon
Lime-Shells	Light	H	1112	1129		Slate & Shells	White	H	3027	3106	
Red Rock	Red	S	1129	1140		Bayard Sand		H	3106	3132	
Slate-Shells	Wh.	H&S	1140	1183		Slate	White	S	3132	3223	S.L.
Lime	White	H	1183	1230		Sand Elizabeth	Dark	S	3223	3226	3206'
- L. Dunkard	White	H	1230	1258		Slate	White	S	3226	3245	
Slate	Black	S	1258	1300		Sand	White	S	3245	3260	Oil
Lime	Gray	H	1300	1307		Slate		S	3260	3264	3224'
- B. Dunkard	White	H	1307	1332		TOTAL DEPTH				3264	3225
Slate	White	S	1332	1394							
Lime	Gray	H	1394	1405							Gas
Slate-Shells	Gr.	H&S	1405	1437							3249'
Lime	White	H	1437	1448							3252
Slate	Black	S	1448	1467							12/10 M
Lime	White	H	1467	1470							2"
- Gas Sand	White	H	1470	1490							
Slate-Shells	Dk.	S&H	1490	1533							
Sand-Shells	Wh.	H	1533	1541							
Slate-Shells	Dk.		1541	1565							
Sand	White	H	1565	1584							
Slate	Black	S	1584	1600							
- 1st Salt	White	H	1600	1616							

(Show S
447
547

RECEIVED
JAN 17 1972

Colonial Oil & Gas Corporation
1000 Times Square Building
Rochester, New York 14614

FRACTURE RECORD

Well Name and No: Jacob A. Shanes # 1

District: Clay County: Monongalia

Permit No: MON-99-FRAC. Completion Date:

Formation Fractured: Material - 30,000 Gal Red. Frac & 30,000 pounds sand
Top - {2732 & 3206} ² below Boyard
Bottom - {2742 & 3216} ELIZABETH

Rock Pressure: Test After Fracture:
Before fracture - 100 PSI Oil -
After fracture - 115 PSI Gas - 35 MCF

Fifty Foot Sand

Very truly yours,

Larry L. Murphy
Larry L. Murphy
President

~~Log may be incorrect - probably lowest Frac zone is 5th Sand, not one below the Boyard.~~

JAN 24 1972

STATE OF WEST VIRGINIA
DEPARTMENT OF ENVIRONMENTAL PROTECTION
OFFICE OF OIL AND GAS

AFFIDAVIT OF PLUGGING AND FILLING WELL

AFFIDAVIT SHOULD BE IN TRIPLICATE, one copy mailed to the Department, one copy to be retained by the Well Operator and the third copy (and extra copies if required) should be mailed to each coal operator at their respective addresses.

Farm name: M. Tennant tract, 93 ac., current owner-Mark Gray Operator Well No.: F2-520

LOCATION: Elevation: 1,129' Quadrangle: Blacksville
District: Clay County: Monongalia
Latitude: 5,061 Feet South of 39 Deg. 40 Min. 00 Sec.
Longitude: 8,948 Feet West of 80 Deg. 12 Min. 30 Sec.

Well Type: OIL GAS

Company: Eastern Associated Coal Corp. Coal Operator Eastern Associated Coal Corp.
1044 Miracle Run Road or Owner 1044 Miracle Run Road
Fairview, WV 26570 Fairview, WV 26570

Agent: Edward Y. Hoy Coal Operator or Owner

Permit Issued Date: June 15, 2005

AFFIDAVIT

STATE OF WEST VIRGINIA,
County of Monongalia ss:

Herbert M. Gump and James Wheeler being first duly sworn according to law depose and say that they are experienced in the work of plugging and filling oil and gas wells and were employed by the above named well operator, and participated in the work of plugging and filling the above well, and Bill Hatfield, Oil and Gas Inspector representing the Director, say that said work was commenced on the 25th day of July, 2005, and that the well was plugged and filled in the following manner:

TYPE	FROM	TO	PIPE REMOVED	LEFT
	Pulled 3,091' sucker rods from the hole. Pulled 3,218' of 2" casing from the hole.			
	Ran 3,202' of 1-1/2" tubing and pumped bottom plug with 8 sacks of gel and 120 sacks of cement.			
	Attempted to pull the 4-1/2" casing. Had to cut, and then pulled 1,666' of 4-1/2" casing from the hole. Cut and pulled 1,637' of 6" casing from the hole.			
	Attempted to pull the 8" casing, but it broke in two repeatedly. Ripped 8" casing every 50' from 1,580' up to 955'. Ran 1-1/2" tubing and finished the bottom plug. Pumped 180 sacks of cement and 2 sacks of gel. Pulled 971' of 8" casing from the hole.			
	Cleaned out to 918' with 9-7/8" bit. Logged hole with Century Geophysical. Cleaned out to 958' with 6" bit.			
	Cut the 10" casing at 450'. Ripped the 10" casing every 50' from 840' up to 450'.			
	Ran 4-1/2" casing to 944' with latchdown plug and pumped 16 sacks of gel. Pulled 441' of 10" casing.			
	Pumped top plug with 105 sacks of E1K cement and 532 sacks of cement.			
	Swabbed water from hole, latchdown plug at 927'.			

Description of monument: 4 1/2" Pipe with metal plate, API #, and date plugged and that the
plugging and filling said well was completed on the 20th day of September, 2005.
And further deponents saith not.

Herbert M. Gump
James Wheeler

RECEIVED
Office of Oil & Gas
the Office of Chief
OCT 24 2005
WV Department of
Environmental Protection

Sworn and subscribe before me this 14th day of OCTOBER, 2005
My commission expires: July 7, 2007

Bill Hatfield
Notary Public
Oil and Gas Inspector: Bill Hatfield 107705

OFFICIAL SEAL
NOTARY PUBLIC
STATE OF WEST VIRGINIA
EDWARD Y. HOY
306 Alta Vista Avenue
Fairmont, West Virginia 26554
My Commission Expires July 7, 2007

MONO 0099P 7660