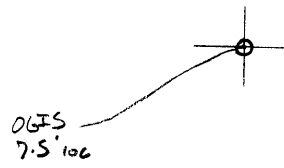


LATITUDE

39 42 30

8002 30

LONGITUDE



7.5 OGIS topo location

7.5' 10c	<u>1.07 S</u>	15' 10c	<u>3.95 S</u>
	<u>0.66 W</u>	(calc.)	<u>2.78 W</u>

Company _____

Farm _____ 2 _____

Quad Osage^{7.5'} Jacksville ME

County _____

District Cass

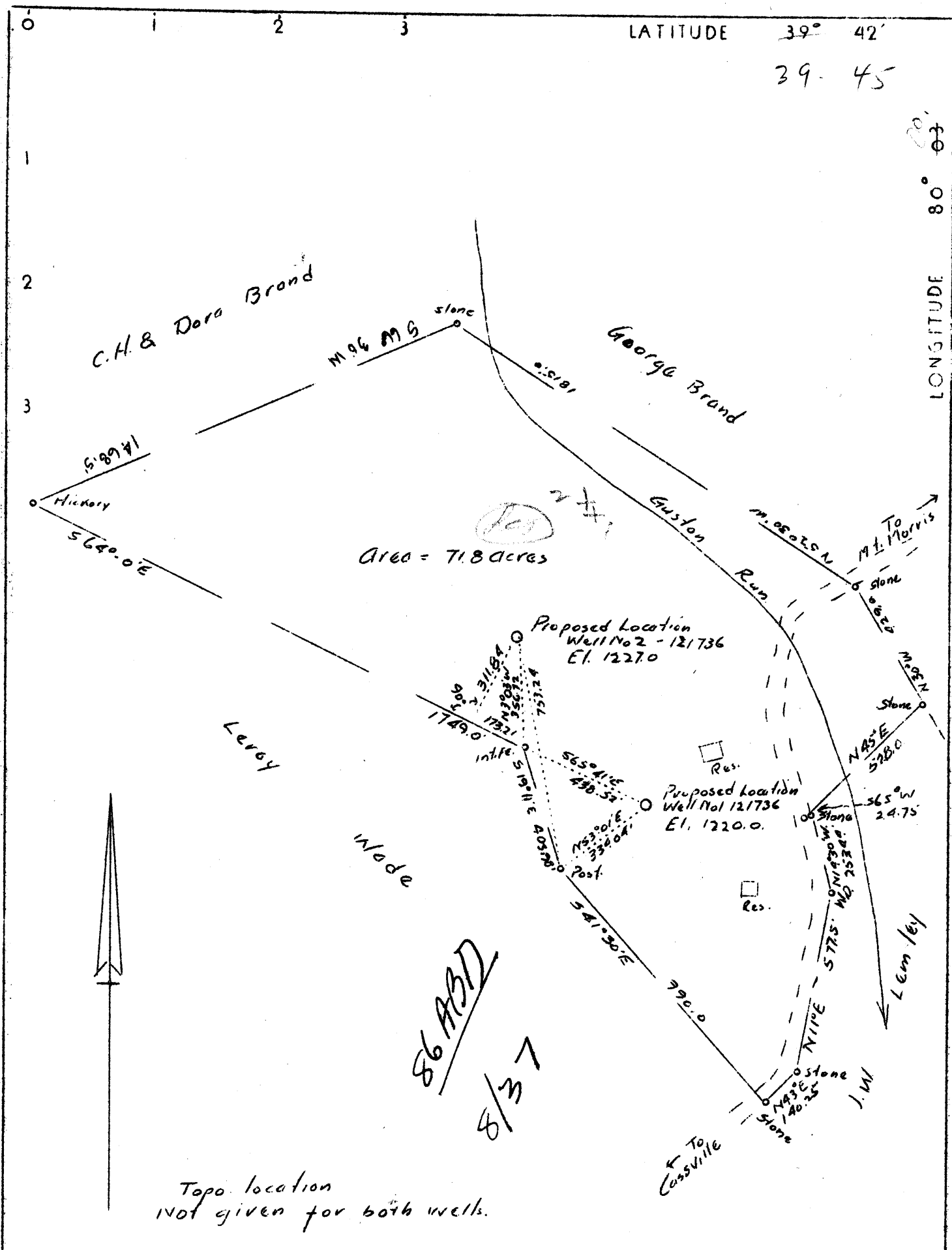
WELL LOCATION MAP

File No. 061-87

CLOT

6-6

(068)



86 ASD
8/37

Topo location
NOT given for both wells.

Company L.J. Houze Convex Glass Co.
 Address Point Marion, Pa.
 Farm C. H. & Dora Brand
 Tract 1 acres 71.8 Lease No. 9536
 Well (Farm) No. 1 Serial No. 1-121736
 Elevation (Spirit Level) 1220.0 1227.0
 Quadrangle Blacksville (N E)
 County Monongalia District Cass
 Engineer James M. Cabbage
 Engineer's Registration No. 3185 Penna.
 File No. _____ Drawing No. 148
 Date 12-22-36 Scale 1" = 400'

STATE OF WEST VIRGINIA
 Department of Mines
 OIL AND GAS DIVISION
 Charleston

WELL LOCATION MAP
 File No. MON-86-87

+ Denotes location of well on U. S. Topographic Maps, scale 1 to 62,500 latitude and longitude lines being represented by border lines as shown.

- Denotes one inch spaces on border line of original tracing.

WEST VIRGINIA DEPARTMENT OF MINES
OIL AND GAS DIVISION

WELL RECORD

87

Permit No. Mon-86

Oil or Gas Well Gas
(Kind)

Company L. J. Houze Convex Glass
Address G. J. VanVoorhis, Dilliner, Pa.
Farm Chas. Brand Acres 71.8
Location (waters) _____
Well No. 2-121736 Elev. 1227
District Cass County Monongalia
The surface of tract is owned in fee by C. H. Brand
Address Mt. Morris, Pa.
Mineral rights are owned by C. H. Brand
Address Mt. Morris, Pa.
Drilling commenced May 7, 1937
Drilling completed July 14, 1937
Date shot _____ Depth of shot _____
Open Flow 2 /10ths Water in _____ Inch
/10ths Merc. in _____ Inch
Volume 62 M. Cu. Ft.
Rock Pressure 35 lbs. 24 hrs.
Oil _____ bbls., 1st 24 hrs.
Fresh water 35 feet _____ feet
Salt water _____ feet _____ feet

Casing and Tubing	Used in Drilling	Left in Well	Packers
Size			
16			Kind of Packer
13			
10	563 ft.		Size of
8 1/4	1312 ft.		
6 5/8	1750 ft.		Depth set
5 3/16			
3			Perf. top
2			Perf. bottom
Liners Used			Perf. top
			Perf. bottom

CASING CEMENTED _____ SIZE _____ No. FT. _____ Date _____

COAL WAS ENCOUNTERED AT 58-62 FEET _____ INCHES
140-145 FEET _____ INCHES 505-516 FEET _____ INCHES
_____ FEET _____ INCHES _____ FEET _____ INCHES

Formation	Color	Hard or Soft	Top	Bottom	Oil Gas or Water	Depth Found	Remarks
Conductor			15	15			
Slate & lime			15	58	Water	35	
Coal			58	62			
Lime			62	75			
Sand			75	135			
Slate			135	140			
Coal			140	145			
Slate			145	158			
Lime			158	200			
Slate			200	205			
Lime			205	405			
Slate			405	416			
Coal (Mapletown)			416	420			
Slate			420	425			
Lime			425	440			
Slate			440	453			
Lime			453	465			
Slate			465	485			
Lime			485	490			
Slate			490	505			
Pgh. Coal			505	516			
Lime & slate			516	594			
Red Rock			594	601			
Sand			601	612			
Slate & red rock			612	745			
Lime			745	774			
Murphy sand			774	800			
Slate	Black		800	845			
Lime	Sandy		845	870			
Slate	White		870	920			
Red Rock			920	955			
Slate	White		955	973			
Lime			973	989			
Slate	White		989	1078			
Lime			1078	1096			
Slate			1096	1118			
Gas sand			1118	1142			
Slate	Dark		1142	1150			
Lime		Hard	1150	1166			
Sand			1166	1190			
Freeport coal			1190	1193			

Formation	Color	Hard or Soft	Top	Bottom	Oil, Gas or Water	Depth Found	Remarks
Lime & slate			1193	1280			
Salt sand	Dark		1280	1336	Water	1328	
Slate			1336	1372			
Sand			1372	1570	Water	1425-1470	
Slate & lime			1570	1628			
Sand			1628	1647			
Slate & lime			1647	1675			
Sand			1675	1690			
Slate & lime			1690	1725			
Red Rock			1725	1737			
Big lime			1737	1818	Gas	-1884-	
Big Injun			1818	1986	"	1905-1908	10' Break in sand
Slate & lime			1986	2042			
Sandy Lime			2042	2070			
Slate & shells			2070	2390			
Sand			2390	2402			
Slate			2402	2405			
50ft. sand.			2405	2432			
Slate			2432	2440			
Sand			2440	2482			
Slate & shells			2482	2535			
Red slate			2535	2540			
Sand			2540	2578			
Slate			2578	2790			
Sand			2790	2800			
Slate			2800	2835			
Lime & slate			2835	2839			
Sand			2839	2847			
Slate			2847	2890			
Sand			2890	2973			
Slate & lime shells			2973	3143			
Total Depth				3143			

Date Aug. 4, 1937.

APPROVED L. J. Houze Convex Glass Co Owner
 By *G. E. Van Voorhis*
 (Title) Supt.