

Latitude 39° 45'

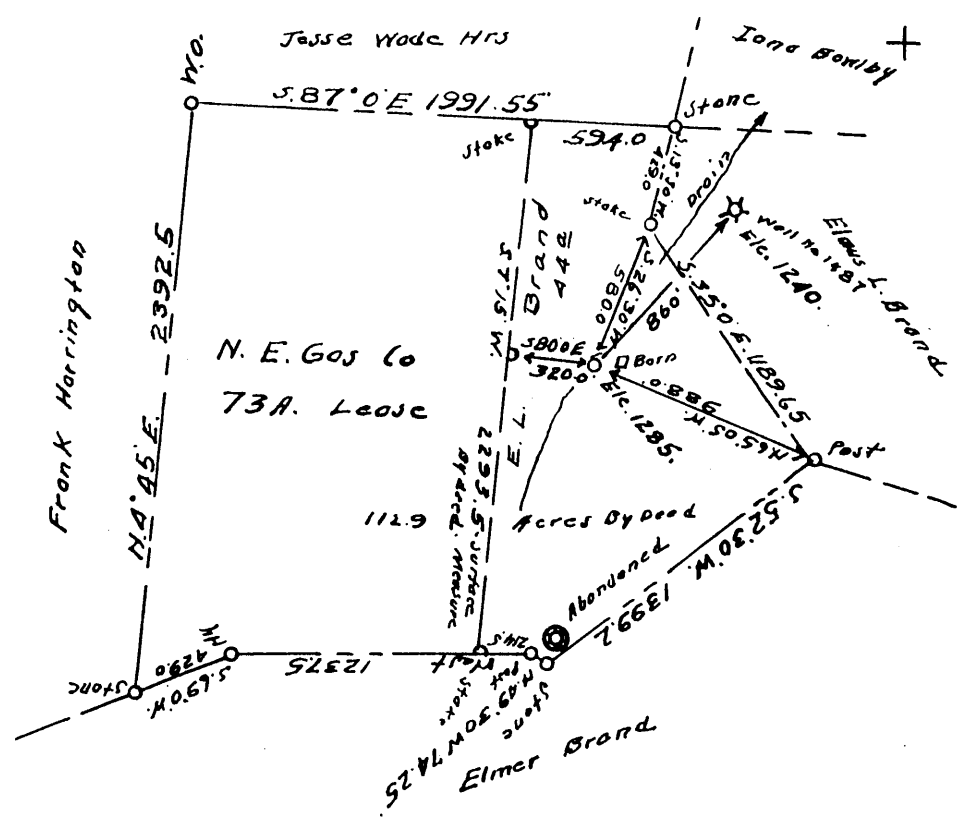
Longitude 80° 00'

0 1 2 3

1

2

3



Company Carnegie Natural Gas Co.
 Address (Mannington, W. Va.) Pgh., Pa.
 Farm Elmus L. Brand
 Tract _____ Acres 44 Lease No. 12082
 Well (Farm) No. 1 Serial No. 1500
 Elevation (Spirit Level) 1285
 Quadrangle Blacksville, N.E.
 County Monongalia District Cass
 Engineer J. A. Shuttleworth
 Engineer's Registration No. 90
 File No. _____ Drawing No. _____
 Date _____ Scale 1" = 800'

STATE OF WEST VIRGINIA
 DEPARTMENT OF MINES
 OIL AND GAS DIVISION
 CHARLESTON

WELL LOCATION MAP

FILE NO. MON-85

Cancelled

† Denotes location of well on United States Topographic Maps, scale 1 to 62,500, latitude and longitude lines being represented by border lines as shown.

— Denotes one inch spaces on border line of original tracing.

CO

Carnegie Natural Gas Company

SUBSIDIARY OF UNITED STATES STEEL CORPORATION

General Offices, Fifth Building Annex

Pittsburgh, Pa.

S. W. MEALS,
PRESIDENT.

June 18, 1937.

West Virginia Department of Mines,
Oil and Gas Division,
Charleston, W. Va.

Dear Sirs:

We hereby request cancellation of Permit
Number Mon-85, issued November 6, 1936, for drilling
our well #1-1500 on the Elmus L. Brand farm, Cass
District, Monongalia County, W. Va., as we have de-
cided not to drill this well.

Yours very truly,

CARNEGIE NATURAL GAS COMPANY,

BHA:mv
cc

S. W. Meals
P r e s i d e n t .