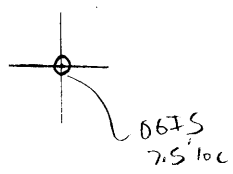


LATITUDE 39°45'

LONGITUDE 80°00'

LONGITUDE



7.5 OGIS topo location

7.5' loc	<u>2.30 S</u>	15' loc	<u>2.30 S</u>
	<u>1.48 W</u>	(calc.)	<u>1.48 W</u>

Company _____

Farm _____

Quad Osage 7.5' Quadrant NE

County _____

District Cass

WELL LOCATION MAP

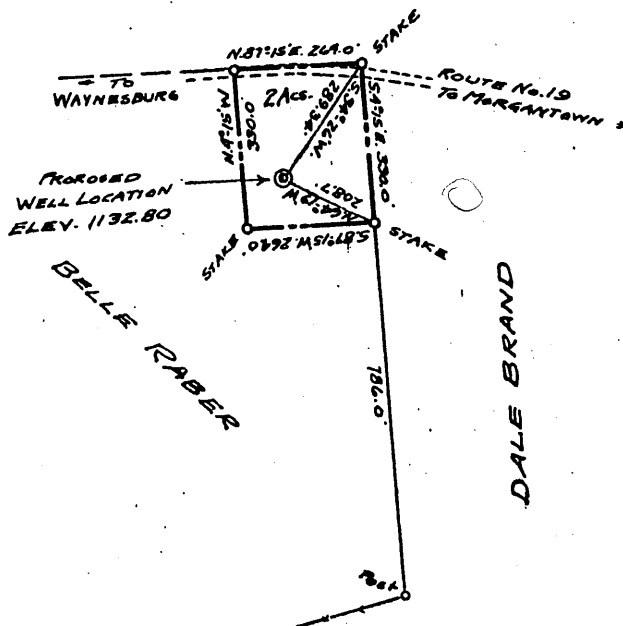
File No. 061-70

CLOP

66 orig
60 deepening

(068)

DALE BRAND



I, the undersigned, hereby certify that this map is correct, and shows all the information to the best of my knowledge and belief, required by the Oil and Gas Section of the Mining Laws of the State of West Virginia

Geo. A. Leubage
Engr.

Acknowledged before me, a Notary Public, this 31st day of July 1935

Harold St. Quincy

My Commission expires

August 6, 1936



PLAN OF LOT
owned by
LESTER AND D.C. RABER
situate in

Cass District, Monongalia Co, W.Va.
showing
PROPOSED LOCATION OF WELL No. 72735
Of the L.J.Houze Convex Glass Co.
Point Marion, Pa.
scale - 1" = 400' July 31, 1935

MON-70

WEST VIRGINIA DEPARTMENT OF MINES
OIL & GAS DIVISION
WELL RECORD

Cannot Locate

Permit No. Mon 70 D *E11Z1*
Quad.

Dry Hole
CASING & TUBING

Company	L.J. Houze Convex Glass Co.			
Address	Point Marion, Pa.	16	Wood	20 20
Farm	Belle Raber Acres 2	10		384 384
Location	Robinson Run	8½		1187 1187
Well No	72735 Elev. 1132.80	6 5/8		1571 1571
District	Cass Monongalia County	2		2264
Surface	Lester & D. C. Raber, R.D. Mt. Morris, Pa.			
Mineral	Same			Coal at 245' 60";
Commenced	May 31, 1944			333' 96"; 1070' 60"
Completed	June 19, 1944			

Conductor		0	20	
Slate & Lime Shells		20	245	
Coal, Mapletown Black	S	245	250	
Slate & Shells		250	333	
Coal, Pittsburgh	H	333	341	
Slate & Shells		341	505	
Sand	Gr S	505	547	<i>Murphy</i>
Slate & Shells-Lime		547	810	
Sand, Little Dunkard?	Dk S	810	820	<i>Upper Mahoning ss.</i>
Slate & Shells		820	895	
Sand Big Dunkard?	Gr H	895	955	<i>Upper Freeport ss.</i>
Slate & Shells		955	1010	
Gas Sand	H	1010	1065	
Slate & Lime Shells		1065	1070	
Coal, Freeport	S	1070	1075	
Slate & Shells		1075	1157	
Sand Salt		1157	1369	Water -
Slate & Shells		1369	1512	
Little Lime	Dk H	1512	1524	
Slate & Lime		1524	1560	
Big Lime	Dk H	1560	1672	
Sand, Big Injun	Lt H	1627	1764	Gas 1643
Slate	Dk S	1764	1768	Gas 1757
Sand Squaw		1765	1806	
Slate & Shells		1806	1870	
Sand, Hundred Foot		1870	1971	
Slate & Lime Shells		1971	2200	
Sand, Gantz		2200	2225	
Sand, Fifty-Foot		2230	2264	Gas 2232-38
Sand, Fifty Foot Wh	H	2264	2330	
Slate & Shells	M	2330	2369	
Red Rock	S	2369	2394	
Sand	H	2394	2425	
Lime & Slate		2425	2439	
Sand	H	2439	2448	
Red Rock	S	2448	2572	
Sand	Gr M	2572	2613	
Lime, Gritty	H	2613	2627	
Slate & Shells		2627	2637	
Sand	H	2637	2643	
Slate & Shells		2643	2654	
Lime & Slate	H	2654	2690	
Lime, Sandy	H	2690	2725	
Sand	H	2725	2808	
Slate	S	2808	2846	
Slate & Lime Shells	M	2846	2867	
Slate	H	2892	2895	
Lime, Gritty	H	2892	2895	
Slate	S	2895	2901	
TOTAL DEPTH			2901	

2264

1037

1037

7119 70 - 2044

Dec. 1935

Table 5, p. 16