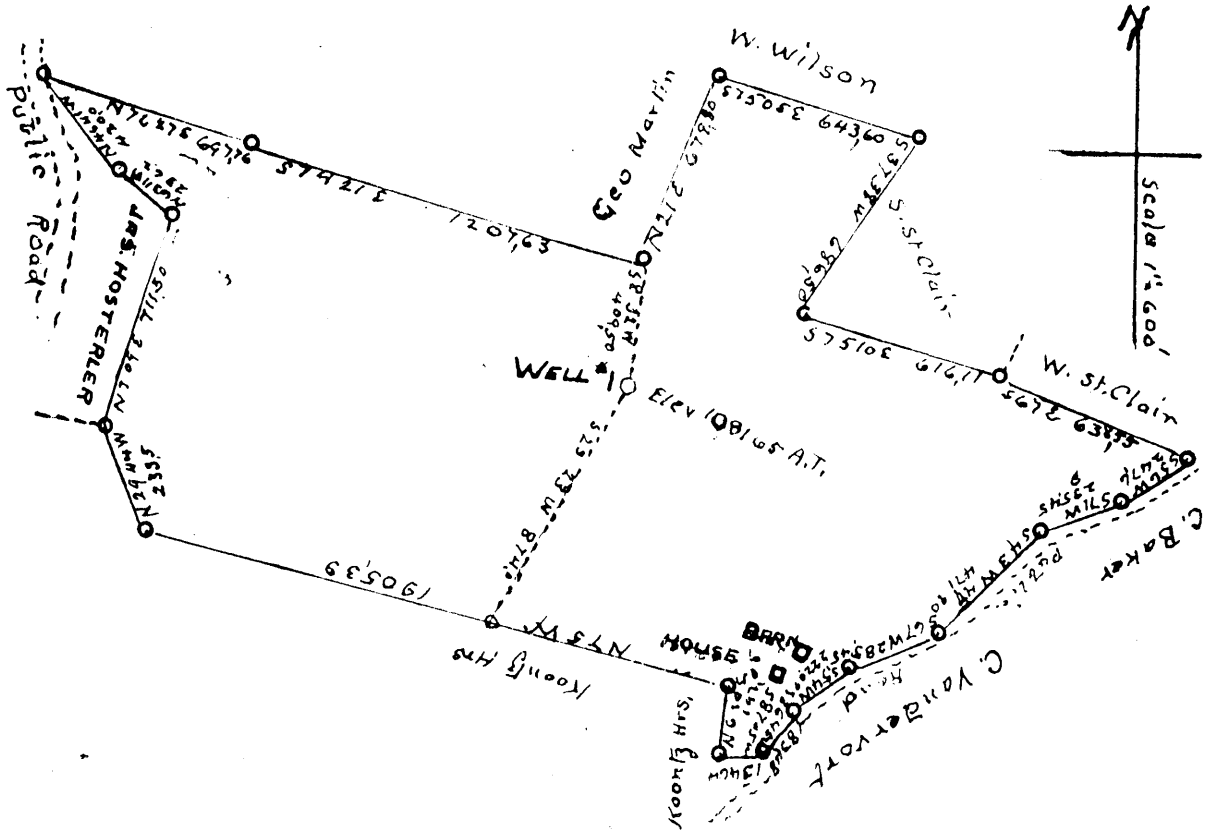


Plot of proposed location of Well No 1
of the S.M. & J.R. VINCENT of MCKEESPORT, PA.
on the J.W. SUMMERS farm consisting of
76 Acres Located in MORGHAN

District MONONGALIA County



I the undersigned, hereby certify this Map is correct and shows all the information to the best of my knowledge and belief required by the oil and gas section of the Mining Laws of West Virginia

P. W. Finney
Engineer

STATE OF PENNSYLVANIA }
COUNTY OF ALLEGHENY } SS:

Acknowledged before me a Notary Public
this 20 day of July 1933

Marion H. Ulm

Marion H. ULM, Notary Public
MY COMMISSION EXPIRES
FEBRUARY 14, 1937
308 WALNUT STREET
MCKEESPORT, PA.

JUL 27 1933

MON-55

Cont. Field

Morgan District, Monongalia County, W. Va.

By S. M. and J. Reed Vincent.

Elevation, 1052' N.

Drilled under permit Men-55 (1936).

Fresh water at 30'. Water, 507', enough to drill with in 10" hole.

Water at 840', made 5 ~~min~~ 10" bailers an hour; at 875', hole full.

Water at 970', made 3 bailers in 8" hole over Sunday.

Casing record: 10" 32#, 429'; 8 $\frac{1}{2}$ " 24#, 933'; 6 $\frac{5}{8}$ " 17#, 1178'; conductor, 10'.

Dry hole.

NEW SS

	Top.	Bottom.
Shale	0	26
Lime	25	30
Slate	30	38
Lime	38	68
Slate	68	80
Sand	80	98
Slate	98	105
Sand	105	130
Red rock	130	178
Slate	178	190
Sand	190	196
Slate	196	220
Red rock	220	280
Slate	280	332
Lime	332	337
Red rock	337	357
Slate	357	390
Brush Creek Coal (SLM)	390	395
Sand	385	457
Slate	457	466
Big Dunkard Sand	466	486
Slate	486	501
Freeport Coal (SLM)	501	507
Slate	507	559
Upper Kittanning Coal (SLM)	559	564
Shale	564	582
Slate, black	582	587
Slate, white	587	594
Gas Sand	594	645
Slate, black	645	660
Lower Kittanning Coal (SLM)	660	663
Slate, white	663	683
Clarion Coal (SLM) (smell of gas)	683	685
Shale, black	686	728
Shale, gritty	728	757
Salt Sand (SLM)	757	921
Slate	921	930
Sand, white	930	1057
Red rock	1057	1134
Slate	1134	1152
Red rock	1152	1170
Big Lime	1170	1250
Keener Sand	1250	1262
Red rock	1262	1275
Big Injun Sand (SLM at 1358, 1360')	1275	1382
Slate	1382	1389
Big Injun Sand	1389	1409

J. W. SUMMERS NO. 1 WELL (Continued).

	Top.	Bottom.
Slate	1409	- 1430
Lime	1430	- 1460
Squaw Sand	1460	- 1484
Slate	1484	- 1496
Squaw Sand	1496	- 1570
Slate	1570	- 1620
Lime	1620	- 1630
Slate	1630	- 1705
Lime	1705	- 1730
Slate	1730	- 1750
Lime	1750	- 1760
Slate	1760	- 1780
Lime shells	1780	- 1820
Lime, gritty	1820	- 1835
Slate	1835	- 1841
Gantz Sand, limy	1841	- 1887
Slate	1887	- 1898
Slate and lime	1898	- 1910
50-Ft. Sand	1910	- 1932
Slate	1932	- 1997
Lime shells	1997	- 2003
Red rock	2003	- 2009
Hard shells	2009	- 2018
Slate	2018	- 2037
Red rock	2037	- 2100
Lime shells	2100	- 2109
Red rock	2109	- 2218
Slate, gritty	2218	- 2251
5th Sand (Only straight sand in 5th)	2251	- 2281
Red rock (was 2262-2263', hard)	2281	- 2287
Sand	2287	- 2302
Slate, gray	2302	- 2338
Bayard Sand (hard, 2338-2348')	2338	- 2405
Slate, white	2405	- 2650
Slate shells	2650	- 2780
Slate	2780	- 2800
Slate and lime	2800	- 2950
Slate	2950	- 2970
Slate and shells	2970	- 3022
Shell	3022	- 3032
Slate, white	3032	- 3062
Sand, brown	3062	- 3072
Slate, black	3072	- 3100
Shell	3100	- 3102
Slate, black	3102	- 3177
Speechley Sand (no gas; sand very broken and limy)	3177	- 3183
Slate, black	3183	- 3234
Sand	3234	- 3248
Slate, gray	3248	- 3288
Lime and slate	3288	- 3397
Slate and shells	3397	- 3445
Slate	3445	- 3448
Lime, gray	3448	- 3500
Total depth		3500