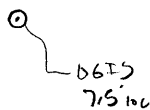


LATITUDE 39°45'

LONGITUDE

LONGITUDE



7.5 OGIS topo location

7.5' loc	<u>2.14 S</u>	15' loc	<u>2.14 S</u>
	<u>1.31 W</u>	(calc.)	<u>3.53 W</u>

Company _____

Farm _____

Quad Osage ^{7.5'} Shelburne NE

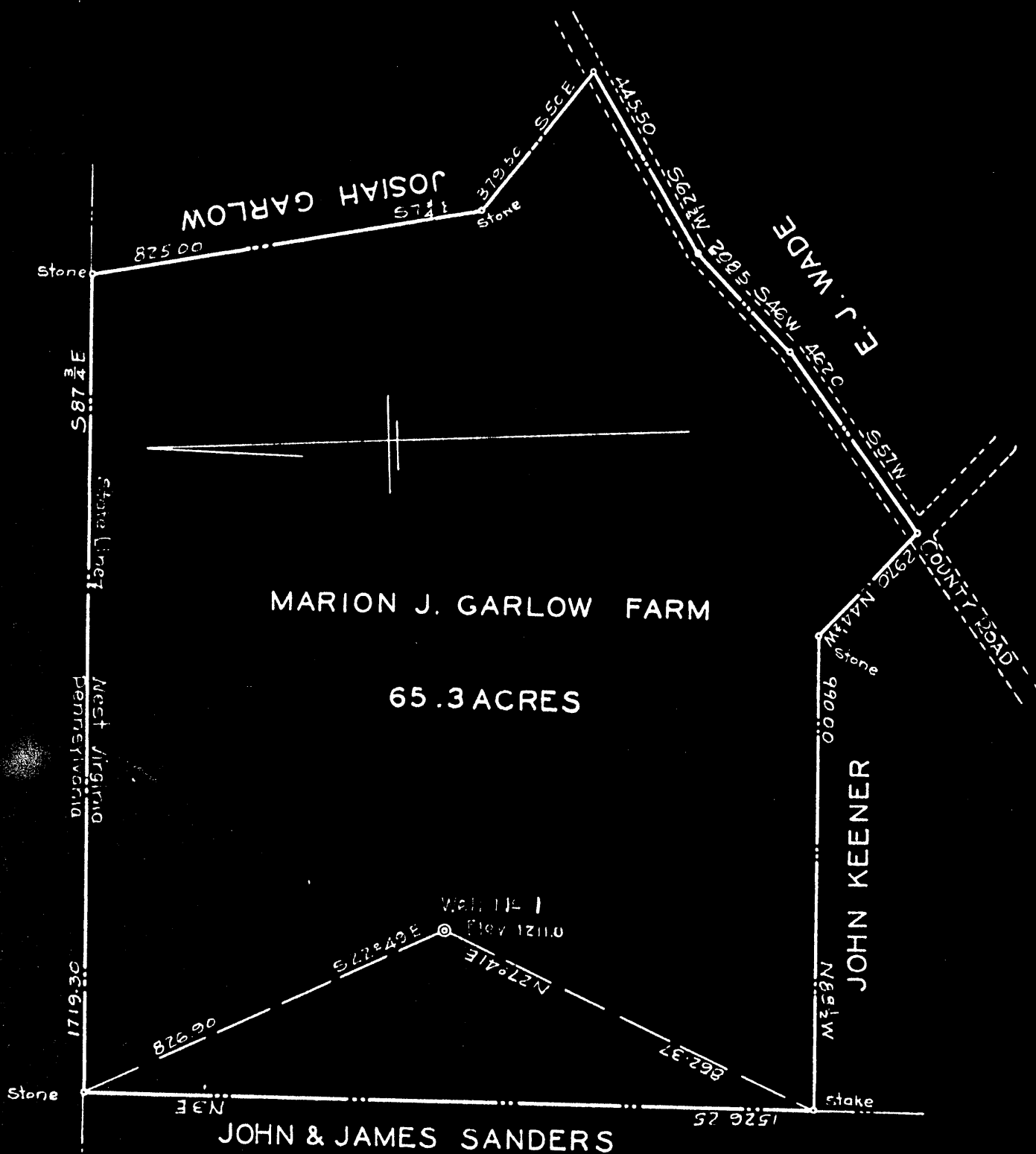
County _____

District Cass

WELL LOCATION MAP

File No. 061-34

PLAT OF PROPOSED LOCATION OF WELL NUMBER 1 OF THE ISAAC L. VAN VOORHIS OF MAIDSVILLE, W.VA. ON THE MARION J. GARLOW FARM, CONSISTING OF 65.3 ACRES LOCATED IN CASS DISTRICT, MONONGALIA COUNTY.



I, the undersigned, hereby certify that this Map is correct and shows all the information to the best of my knowledge and belief, required by the Oil and Gas Section of the Mining Laws of West Virginia.

Geo. A. Baintell
 Engineer

Acknowledged before me a Notary Public this 7 day of July 1930

My Commission expires July 21 - 1933

Wayne Cox
 Notary Public

Scale 1" = 300'

Gas District, Monongalia County, W. Va.
 By Van Voorhis Brothers (Isaac and John).
 Completed Sept. 28, 1930.
 Elevation, 1180' B.

Now 061 34

	Top.	Bottom.	Thickness.
Sand	12	28	16
Slate and lime shells	28	40	12
Slate and lime shells	40	55	15
Sand	55	75	20
Slate and shells	75	115	40
Lime, white and hard	115	254	139
Coal, Sewickley	254	260	6
Slate and lime, very hard	260	315	55
Coal, Redstone	315	321	6
Lime	321	345	24
Slate	345	350	5
Coal, Pittsburgh	352	360	8
Slate and shells	360	460	100
Sand	460	485	25
Sand, Murphy	550	575	25
Slate, rock and shells	575	625	50
Slate, white	625	670	45
Red rock, slate and shells	670	780	110
Red rock	780	790	10
Sand, Little Dunkard	790	845	55
Slate and shells	845	925	80
Sand, Big Dunkard	925	1018	93
Slate	1018	1022	4
Sand, Gas, very hard	1022	1080	58
Coal, *reeport?	1080	1087	7
Sand	1087	1095	8
Slate and shells	1095	1215	120
Salt Sand, (bottom 12" hole)	1215	1405	190
Slate, black	1405	1435	30
Lime	1435	1445	10
Slate, blue	1445	1460	15
Lime, gritty and white	1460	1490	30
Slate, blue	1490	1510	20
Lime, white	1510	1545	35
Red rock, open and soft	1545	1553	8
Lime	1553	1560	7
Slate, blue	1560	1568	8
Little Lime, dark	1568	1579	11
Pencil Cave, dark	1579	1587	8
Break in lime	1592	1600	8
Big Lime	1600	1680	80
Big Injun Sand (gas, 53,000 cu. ft., at 1800')	1680	1849	169
Slate and shells	1849	1910	61
Squaw Sand	1910	2220	310
Slate and shells	2220	2240	20
Gantz Sand	2240	2255	15
Slate	2255	2265	10
50-Ft. Sand	2265	2295	30
Slate, white and soft	2295	2313	18
Red rock and shells	2425	2450	25

2755
 1680
 585

(OVER)

WEST VIRGINIA DEPARTMENT OF MINES

Oil and Gas Section

PRELIMINARY DATA SHEET NO. 1

File No. 34 Well No.

Van Voorhis Company, of Maidsville, W. Va.

on ththe H. G. Harlow, Est. Farm

containing 6.5 acres. Location

Cass District, in Monongalia County, West Virginia.

The surface of the above tract is owned in fee by H. G. Harlow, Est.

of Morgantown address. and the mineral rights are owned by

H. G. Harlow, Est. of Morgantown, W. Va.

The oil and gas privileges are held under lease by the above named company, and this well is drilled under

permit No. Mow-34 issued by the West Virginia Department of Mines, Oil and Gas Section,

July 18, 1930.

Elevation of surface at top of well, _____ Spirit Barometric.

The number of feet of the different sized casings used in the well.

..... 2.0 feet..... 1.6" size. Wood conductor.

..... 393 feet..... 10" size, csg. feet..... sized csg.

..... 1255 feet..... 8 1/4" size, csg. feet..... sized csg.

..... 1605 feet..... 6 5/8" size, csg. feet..... sized csg.

..... packer of 6 5/8" size, set at 2676 ft.

..... packer of size, set at

..... in casing perforated at feet to feet.

..... in casing perforated at feet to feet.

Coal was encountered at 259 feet; thickness 6 ft inches, and at 315

feet; thickness 6 ft inches; and at 352 feet; thickness 8 ft inches.

Liners were used as follows: (Give details) None.

EWG
210

Nov. 3, 1930. Date.

Approved James L. Van Voorhis owner.

By _____ (Title)

Van Voorhis Company
Maidsville, W. Va. Address

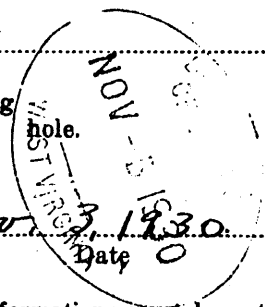
COMPLETION DATA SHEET
NO. 2
FORMATION RECORD

Name	Color	Character	Oil, Gas or Water	Top	Bottom	Thickness	Total Depth	Remarks
<i>Sand</i>				<i>12</i>	<i>28</i>			
<i>Slate</i>				<i>28</i>	<i>90</i>			
<i>Slate</i>				<i>90</i>	<i>55</i>			
<i>Sand</i>				<i>55</i>	<i>75</i>			
<i>slate</i>				<i>75</i>	<i>115</i>			
<i>Lime</i>	<i>white</i>	<i>Hard</i>		<i>115</i>	<i>254</i>			
<i>iron py</i>								
<i>impure</i>								
<i>Coal</i>	<i>Black</i>	<i>Soft</i>		<i>254</i>	<i>260</i>			
<i>Red Stone</i>								
<i>Coal</i>	<i>Black</i>	<i>Soft</i>		<i>315</i>	<i>321</i>			
<i>Pittsburgh</i>								
<i>Coal</i>	<i>Black</i>	<i>Soft</i>		<i>352</i>	<i>360</i>			
<i>Murphy</i>								
<i>sand</i>				<i>550</i>	<i>575</i>			
<i>Little Lumber</i>								
<i>Sand</i>				<i>790</i>	<i>845</i>			
<i>Big Lumber</i>								
<i>Sand</i>				<i>925</i>	<i>1018</i>			
<i>Sand</i>								
<i>Gas Sand</i>		<i>Hard</i>		<i>1022</i>	<i>1080</i>			
<i>Freight</i>				<i>1080</i>	<i>1087</i>			
<i>Coal</i>								
<i>Salt Sand</i>				<i>1215</i>	<i>1905</i>			
<i>Big Lime</i>				<i>1600</i>	<i>1680</i>			
<i>Big Lumber</i>			<i>Gas</i>	<i>1680</i>	<i>1899</i>			
<i>Sandy Sand</i>				<i>2290</i>	<i>2255</i>			
<i>Fifty foot</i>				<i>2265</i>	<i>2295</i>			
<i>Thirty foot</i>				<i>2313</i>	<i>2355</i>			
<i>Gordon Gray</i>				<i>2450</i>	<i>2465</i>			
<i>Gordon</i>				<i>2550</i>	<i>2555</i>			
<i>Fifth</i>		<i>Hard</i>		<i>2670</i>	<i>2683</i>			
<i>Bayard</i>		<i>Hard</i>		<i>2725</i>	<i>2735</i>			
<i>Bayard Gray</i>				<i>2782</i>	<i>2815</i>			
<i>Elizabeth</i>		<i>Gas</i>	<i>Gas.</i>	<i>2825</i>	<i>2855</i>			

Well was ~~not~~ shot at *2835* feet; well was shot at _____ feet.

Salt Fresh water at _____ feet; salt fresh water at _____ feet.

Well was producing hole.



Nov 18 1930 Date

Approved *Isaac L. Van Voorhis* Owner

NOTE: All bottom formations must be noted as indicated above and all key-rocks and oil and gas sands must be recorded under their proper geological names in the district as well as any local names commonly used in the district for such strata.