

LATITUDE 39°40'00"

75
+
70352

118°20'30"

LONGITUDE

7'5 OGIS topo location

7.5' loc	<u>0.02S</u>	15' loc	<u>0.02S</u>
	<u>0.36W</u>	(calc.)	<u>2.58W</u>

#266 in 1912 Co Rpt

Company _____

Farm _____

Quad Osage (Belle EC)

County Monongalia

District Cass

WELL LOCATION MAP

File No. 061-70352

now 2

LATITUDE

59° 40'

.03S
36W

Property map approx.

LONGITUDE

7.5 OGIS topo location

7.5' loc	D.17 S	15' loc	<u>0.17 S</u>
	<u>0.52 W</u>	(calc.)	<u>2.74 W</u>

Company _____

Farm _____

Quad Osage^{7.5'} Blacksville EC

County Monongalia

District Cass

WELL LOCATION MAP

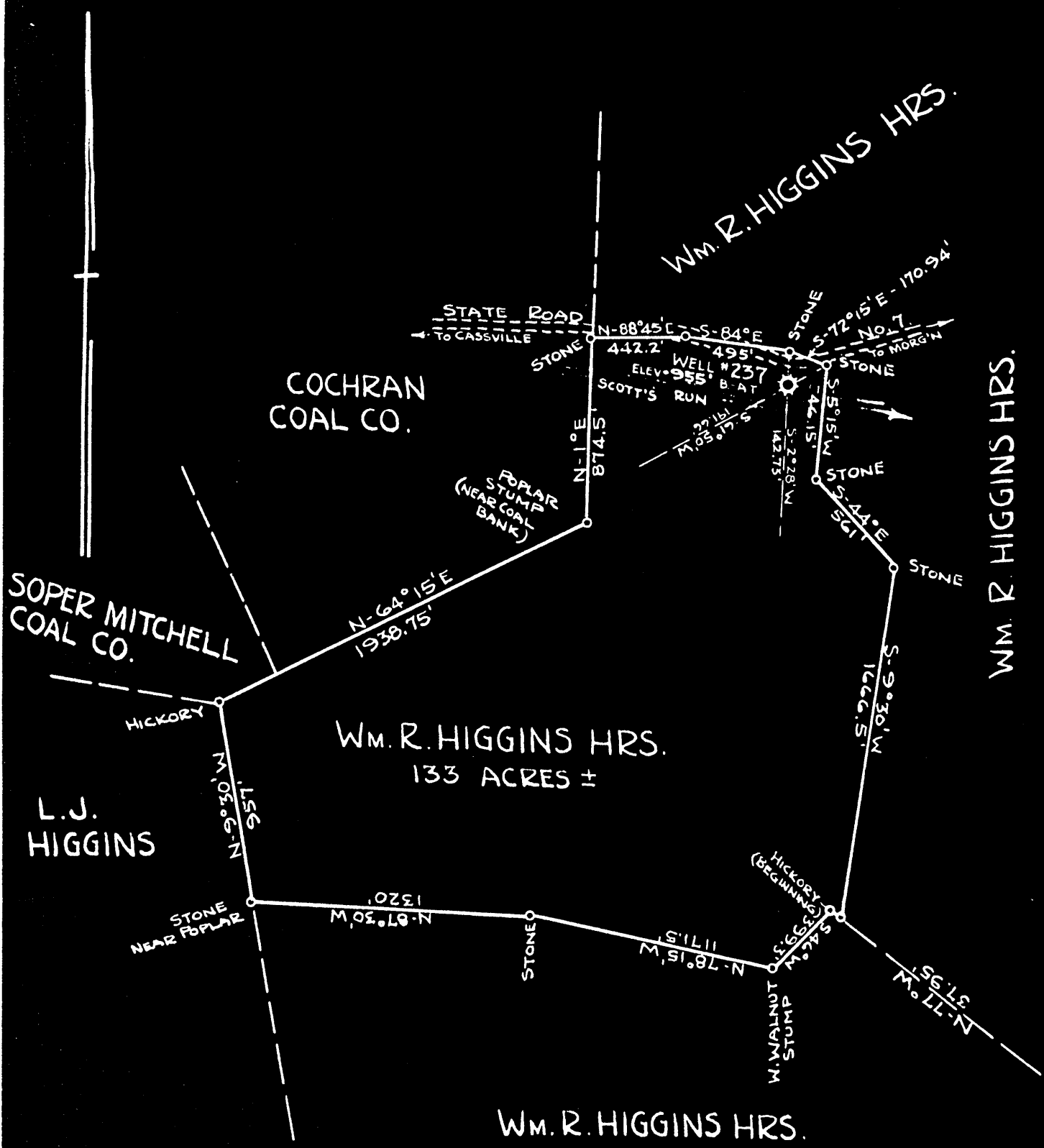
File No. 061 - 2

CLOP

6-6 orig.
6-6 deepening

(068)

PLAT OF THE LOCATION OF WELL NO. 237 (TO BE DRILLED DEEPER) OF THE
M.W.P.P.S.CO. OF FAIRMONT W.VA. ON THE
WM.R.HIGGINS HRS. FARM, CONSISTING OF 133 ± ACRES
 LOCATED IN CASS DISTRICT MONONGALIA COUNTY.



ENGINEER'S CERTIFICATE

I, THE UNDERSIGNED, HEREBY CERTIFY THAT THIS MAP IS CORRECT AND SHOWS ALL THE INFORMATION TO THE BEST OF MY KNOWLEDGE AND BELIEF, REQUIRED BY THE OIL AND GAS SECTION OF THE MINING LAWS OF WEST VIRGINIA

F. A. H. Kelley
 ENGINEER

ACKNOWLEDGED BEFORE ME A Notary Public in and for

Marion Co. W. Va. THIS 2nd DAY OF August 1929

C. C. Straight

My Commission expires Oct. 19, 1936

Cass District, Monongalia County, W. Va.


By Monongahela West Penn Public Service Co., Fairmont, W. Va.

This well was originally drilled to the Big Injun Sand (T.D., 1636') in 1910. Drilled deeper (2082').

Completion (deepening) reported to Dept. of Mines Oct. 2, 1929.

Well was not shot.

Preliminary data sheet missing.

MON-2


	Top.	Bottom.	Thickness.
Conductor	0	- 13	13
Slate	13	- 23	10
Lime	23	- 32	9
Slate and shale	32	- 50	18
Lime	50	- 68	18
Slate	68	- 82	14
Mapletown (Sewickley) Coal	82	- 87	5
Slate and shale	87	- 99	12
Lime	99	- 108	9
Slate and shale	108	- 128	20
Lime	128	- 139	11
Slate	139	- 157	18
Lime	157	- 169	12
Slate	169	- 178	9
Pittsburgh Coal	178	- 186	8
Slate and shale	186	- 198	12
Limy sand	198	- 213	15
Slate and shale	213	- 238	25
Limy shale	238	- 256	18
Slate and shale	256	- 326	70
Sand	326	- 345	19
Slate and shale	345	- 406	61
Sand	406	- 420	14
Slate	420	- 501	81
Sand and shale	501	- 528	27
Sand (Little Dunkard)	528	- 545	17
Slate	545	- 563	18
Slate and shale	563	- 606	43
Sand (Big Dunkard)	606	- 680	74
Lime and shale	680	- 704	24
Slate and shale	704	- 779	75
Lime	779	- 790	11
Slate and shale	790	- 814	24
Red rock	814	- 835	21
Slate and shale	835	- 860	25
Sand	860	- 878	18
Slate and shale	878	- 920	42
Red rock	920	- 951	31
Slate and shale	951	- 1013	62
Sand (First Salt)	1013	- 1043	30
Black slate	1043	- 1078	35
Sand (Second Salt)	1078	- 1236	158
Slate and shale	1236	- 1296	60
Red rock	1296	- 1361	65
Slate	1361	- 1388	27
Lime	1388	- 1406	18
Slate and shale	1406	- 1422	16
Limy sand	1422	- 1440	18

(OVER)

	Top.	Bottom.	Thickness.
Slate	1440	- 1444	4
Big Lime	1444	- 1504	60
Big Injan Sand (1st gas, 1613'; 2nd gas, 1631')	1504		
Total depth			1636
DEPENED:			
Big Injan Sand	1700	- 1700	
Lime	1700	- 1750	50
Sand (Square)	1750	- 1780	30
Slate	1780	- 1790	10
Sand	1790	- 1825	35
Sand shells	1825	- 2040	215
Giant Sand (gas pay, 2060')	2040		
Total depth			2082

Cass District, Monongalia County, W. Va.
By Monongahela West Penn Public Service Co.
On 133 acres.
Commenced drilling May 28, 1910; completed, July 5, 1910.
No.....in Gas Report.

MC 12

See page 496, Monongalia-Mariem-Taylor Report of Survey.
Producing from Big Injun Sand.

Total depth 1636 ft.