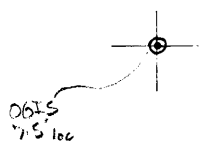


LATITUDE

39° 42' 30"

LONGITUDE 80° 11' 30"



7.5 OGIS topo location

7.5' loc	<u>1.68 S</u>	15' loc	<u>-56 S</u>
	<u>0.29 W</u>	(calc.)	<u>2.97 W</u>

Company \_\_\_\_\_

Farm \_\_\_\_\_

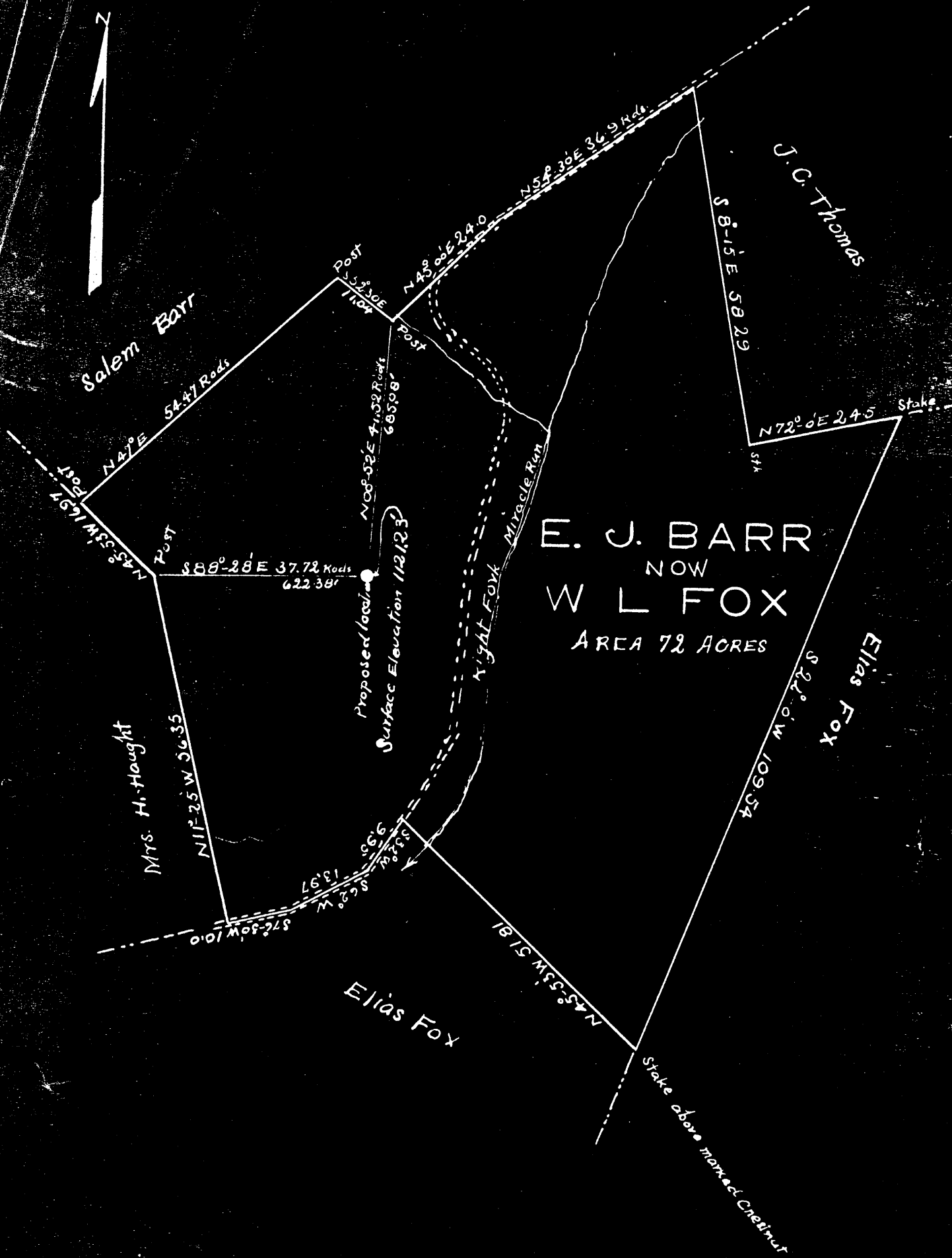
Quad Wadestown 7.5 Monongalia

County Monongalia

District Battelle

WELL LOCATION MAP

File No. 061-1



Plan of proposed Gas Well location on lands of E. J. Barr, now W. L. Fox, in  
 Baltelle District, Monongalia County, West Virginia.  
 July 5<sup>th</sup> 1929, I, the undersigned, hereby certify above shown location  
 to be True and Correct.  
 Scale 1" = 20 Rods

*W. B. Hinson*

WEST VIRGINIA DEPARTMENT OF MINES

Mon-1-8

Oil and Gas Section

PRELIMINARY DATA SHEET NO. 1

File No. Mon-1 Well No. I.

Roy W. Clovis & S. O. Eddy Company, of Jollytown, and Brave Pa.

are drilling a well on ththe Elias Fox Farm

containing 27.76/100 acres. Location.....

Battelle District, in Monongalia County, West Virginia.

The surface of the above tract is owned in fee by the above named parties  
of the above address, and the mineral rights are owned by

The Davis Coal & Coke Company of Baltimore Md.

The oil and gas privileges are held under lease by the above named company, and this well is drilled under  
permit No.....issued by the West Virginia Department of Mines, Oil and Gas Section,  
January 14th 1930

Elevation of surface at top of well, 1180.33 Spirit Barometric.

The number of feet of the different sized casings used in the well.

Fourteen 16 inch size. Wood conductor.  
939 feet. 10 inch size, csg. feet. sized csg.  
feet. size, csg. feet. sized csg.  
feet. size, csg. feet. sized csg.

..... packer of..... size, set at.....

..... packer of..... size, set at.....

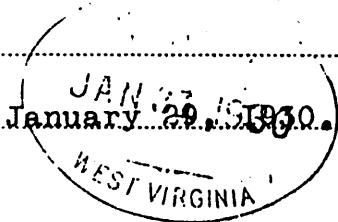
..... in casing perforated at..... feet to..... feet.

..... in casing perforated at..... feet to..... feet.

Coal was encountered at 541 feet; thickness 36 inches, and at 785

feet; thickness 60 inches; and at 881 feet; thickness 96 inches.

Liners were used as follows: (Give details) Casing shoe was used on bottom  
joint of 10 inch casing. The hole was filled with 30 feet of mud  
from the bottom.



Date.

Approved Roy W. Clovis & S. O. Eddy, Owner.

By Roy W. Clovis (Title)

COMPLETION DATA SHEET NO. 2

FORMATION RECORD

NAME	COLOR	CHARACTER	OIL, GAS OR WATER	TOP	BOTTOM	THICKNESS	TOTAL DEPTH	REMARKS
Big Dunkard	White	Sharp	None	1350	1460	90		
Salt Sand	Gray	Sharp	Hole full	1775	1910	135		Water at 1890
Big Lime	White	Hard	None	2089	2164	75		Little water & showing of oil & gas at 2249 to 2254.
Big Injun	Brown	Hard	Yes	2164	2375	211		
Upper 30 Ft.	White	Lime	None	2650	2700	50		
Fifty Ft.	White	Gritty	None	2791	2850	59		
Lower 30 Ft.	White	Hard	None	2925	2970	45		
Gordon Str.	White	Limy	Gas	3043	3082	39		Gas at 3053 to 3057 test 6/10
Gordon	White	Gritty	None	3097	3130	33		water in two inch opening.
Fourth	White	Limy	None	3140	3178	38		
Total depth of well				--	--	--	3391	
<p>Below the Big Injun Sand the formation was mostly brittle and gritty lime.</p> <p>When the well was completed the open flow test was 4/10 water in two inch opening. 84 mcf</p>								

Well was not shot at \_\_\_\_\_ feet; well was shot at \_\_\_\_\_ feet.

Fresh water at \_\_\_\_\_ feet; Salt fresh water at \_\_\_\_\_ feet.

Well was \_\_\_\_\_ producing hole.  
dry

March 26, 1930  
Date

Approved J. P. Eddy & Roy W. Clovis  
Owner

NOTE: All bottom formations must be noted as indicated above and all key-rocks and oil and gas sands must be recorded under their proper geological names in the district as well as any local names for which strata that may be common to the district.

Battelle District, Monongalia County, W. Va.  
By Roy W. Clovis and S. O. Eddy, Jollytown, Pa.  
On 72 acres, surface owned by W. L. Fox, Madestown, W. Va.  
Drilled under permit issued July 23, 1929.  
Elevation, 1121.23' L.  
16" conductor, 14"; 13" casing, 121'; 10" 868' 11"/  
Coal was encountered at 465-470, 736-741, and 822-830'.  
Completion (preliminary data sheet only) reported to Dept.  
of Mines Sept. 25, 1929.  
RECORD MISSING.

MON-1