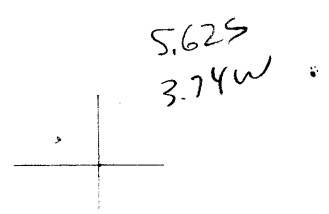


LATITUDE 37° 55'

LONGITUDE 82° 20'



7'5 OGIS topo. location

7.5' loc \_\_\_\_\_ 15' loc \_\_\_\_\_  
 \_\_\_\_\_ (calc.) \_\_\_\_\_

Company United Fuel Gas  
 Farm McCormick Dangerfield & Davis (89)  
 Quad \_\_\_\_\_  
 County Mingo  
 District Warfield

WELL LOCATION MAP  
 File No. 059-70020  
 #143 in 1914 WNGES  
 Mingo County Report

MCCORMICK, DANGERFIELD & DAVIS NO. 89 WELL.

700,20  
No. 33A O.F. (Mingo).  
No. 143 Logan-Mingo Rept.

Warfield District, Mingo County, W. Va.

United Fuel Gas Co.

At mouth of Lower Burning Creek, 0.3 mi. S. E. of Kernit.

Elevation, 600' B.

Attached to No. 33 O.F. (Hie Stepp).

# 143 in 60 RPT

"They have no record of No. 89, more than production.  
Gas calculated to be 2,858,000 cu. ft."