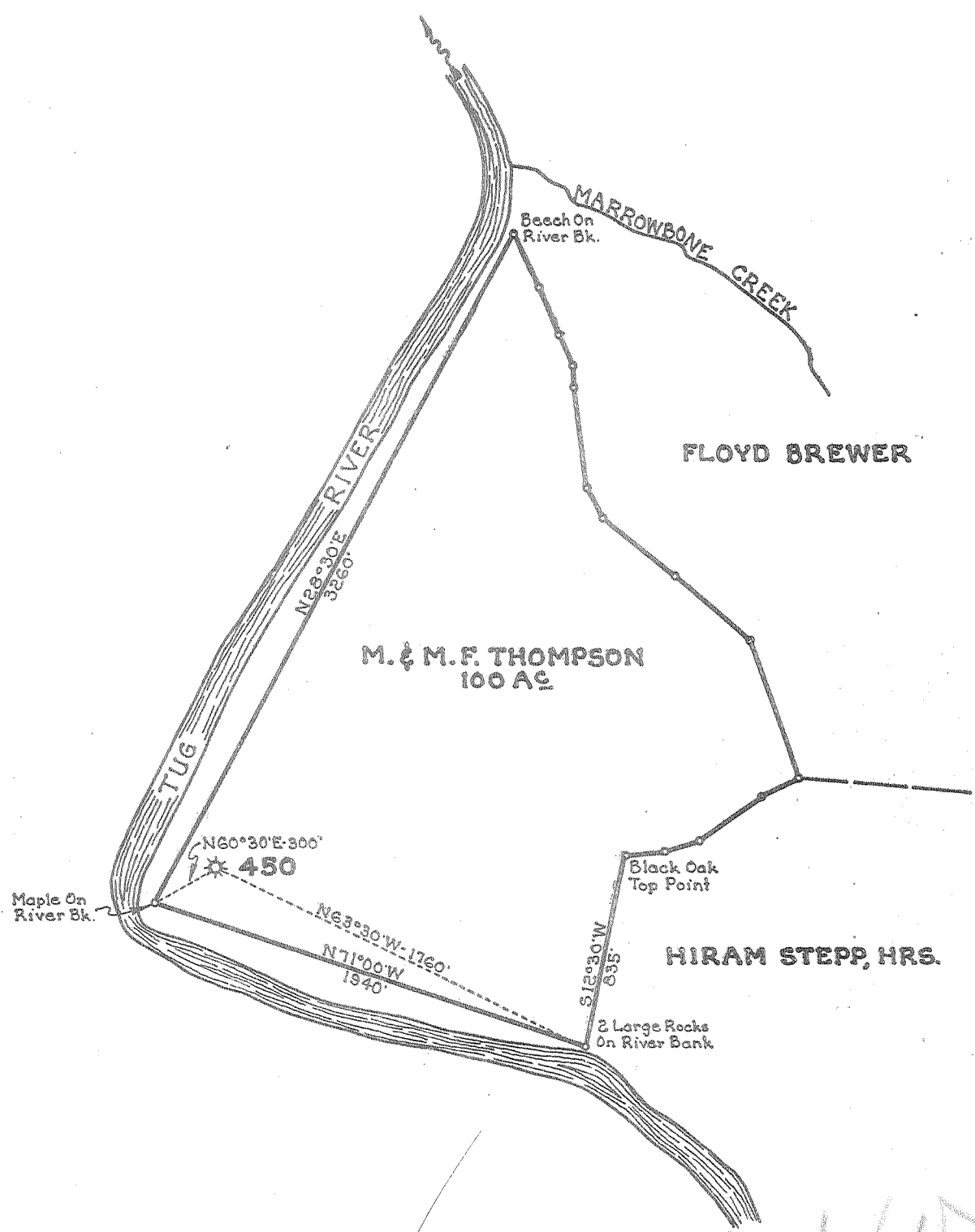


Latitude 37° 55'

Longitude 82° 25'



New Location...   
 Drill Deeper.....   
 Abandonment.....

FEB 13 1955

0.1 W  
 4.77

Company	UNITED FUEL GAS CO.
Address	CHARLESTON
Farm	M. & M.F. THOMPSON
Tract	Acres 100 Lease No. 1296
Well (Farm) No.	Serial No. 450
Elevation (Spirit Level)	631.0
Quadrangle	NAUGATUCK
County	MINGO District KERMIT
Engineer	Seybert R. Russell
Engineer's Registration No.	2529
File No.	18-23 Drawing No.
Date	1-6-56 Scale 1" = 660'

STATE OF WEST VIRGINIA  
 DEPARTMENT OF MINES  
 OIL AND GAS DIVISION  
 CHARLESTON

WELL LOCATION MAP  
 FILE NO. MIN-40-A

+ Denotes location of well on United States Topographic Maps, scale 1 to 62,500, latitude and longitude lines being represented by border lines as shown.

- Denotes one inch spaces on border line of original tracing.

6-6 (243)

M. & M. F. Thompson No. 450 - U. F. G. Co. - MIN-40-A



703

STATE OF WEST VIRGINIA  
DEPARTMENT OF MINES  
OIL AND GAS DIVISION

Quadrangle Naugatuck

WELL RECORD

Permit No. 450

Oil or Gas Well Gas  
(KIND)

Company UNITED FUEL GAS CO.  
Address P. O. Box 1273, Charleston 25, W. Va.  
Farm M. & M. F. Thompson Acres 100  
Location (waters) Tug River  
Well No. 450 Elev. 631  
District Kernit County Mingo  
The surface of tract is owned in fee by \_\_\_\_\_  
Address \_\_\_\_\_  
Mineral rights are owned by Vernie Compton, Agent  
Address Kernit, W. Va.

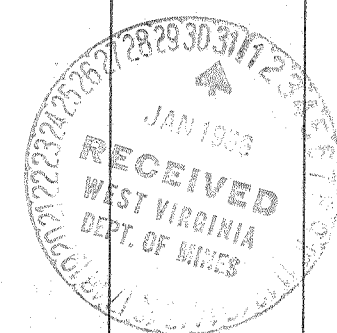
Casing and Tubing	Used in Drilling	Left in Well	Packers
Size			Kind of Packer
16			<u>Callanan</u>
13		<u>89'</u>	Size of
10		<u>242'</u>	<u>3"x8-1/4"x16"</u>
8 1/4		<u>1098'</u>	Depth set
<del>3 1/2</del> <u>5-3/16"</u>	<u>1433'</u>		
5 3/16			
3		<u>256' 5"</u>	Perf. top
2		<u>1134' 10"</u>	Perf. bottom
Liners Used			Perf. top
			Perf. bottom

Drilling commenced 10-10-12  
Drilling completed 2-26-13  
Date Shot From \_\_\_\_\_ To \_\_\_\_\_  
With \_\_\_\_\_  
Open Flow 4 /10ths Water in 2 Inch  
\_\_\_\_\_ /10ths Merc. in \_\_\_\_\_ Inch  
Volume 94,000 Cu. Ft.  
Rock Pressure \_\_\_\_\_ lbs. \_\_\_\_\_ hrs.  
Oil \_\_\_\_\_ bbls., 1st 24 hrs.  
Fresh water \_\_\_\_\_ feet \_\_\_\_\_ feet  
Salt water \_\_\_\_\_ feet \_\_\_\_\_ feet

CASING CEMENTED \_\_\_\_\_ SIZE \_\_\_\_\_ No. Ft. \_\_\_\_\_ Date \_\_\_\_\_

COAL WAS ENCOUNTERED AT 175 FEET 36 INCHES  
\_\_\_\_\_ FEET \_\_\_\_\_ INCHES \_\_\_\_\_ FEET \_\_\_\_\_ INCHES  
\_\_\_\_\_ FEET \_\_\_\_\_ INCHES \_\_\_\_\_ FEET \_\_\_\_\_ INCHES

Formation	Color	Hard or Soft	Top	Bottom	Oil, Gas or Water	Depth Found	Remarks
Coal			175	178			
Sand			178	200			
Slate			200	230			
Blue Slate			230	250			
Sand			250	300			
Slate			300	350			
Lime			350	365			
Slate			365	400			
Slate			400	450			
Lime			450	480			
Sand			480	500			
Lime			500	540			
Salt Sand			540	650			
Lime			650	710			
Sand			710	730			
Lime			730	800			
Slate			800	830			
Sandy Lime			830	860			
Sand			860	880			
Slate			880	900			
Lime			900	920			
Red Rock & Lime			920	940			
Lime			940	950			
Slate			950	965			
Red Rock			965	975			
Slate			975	990			
Red Rock			990	1000			
Lime			1000	1012			
Slate			1012	1030			
Sand			1030	1038			
Pencil			1038	1049			
Big Lime			1049	1054			
lime			1054	1260			
Lime & Big Injun			1260	1300			
Red Rock & Slate			1300	1378			
Sandy Lime			1378	1393			



JUNE 21 1958

Formation	Color	Hard or Soft	Top	Bottom	Oil, Gas or Water	Depth Found	Remarks
Slate & Shells			1393	1830	Gas at 1386'		
Berea Grit			1830	1922	Gas at 1833'		
Slate			1922	1927			
Total depth			1927'				

Date January 21, 19 56

APPROVED UNITED FUEL GAS CO., Owner

By S. R. Ferrell  
(Title)

Mgr. Civil Engineering Dept.