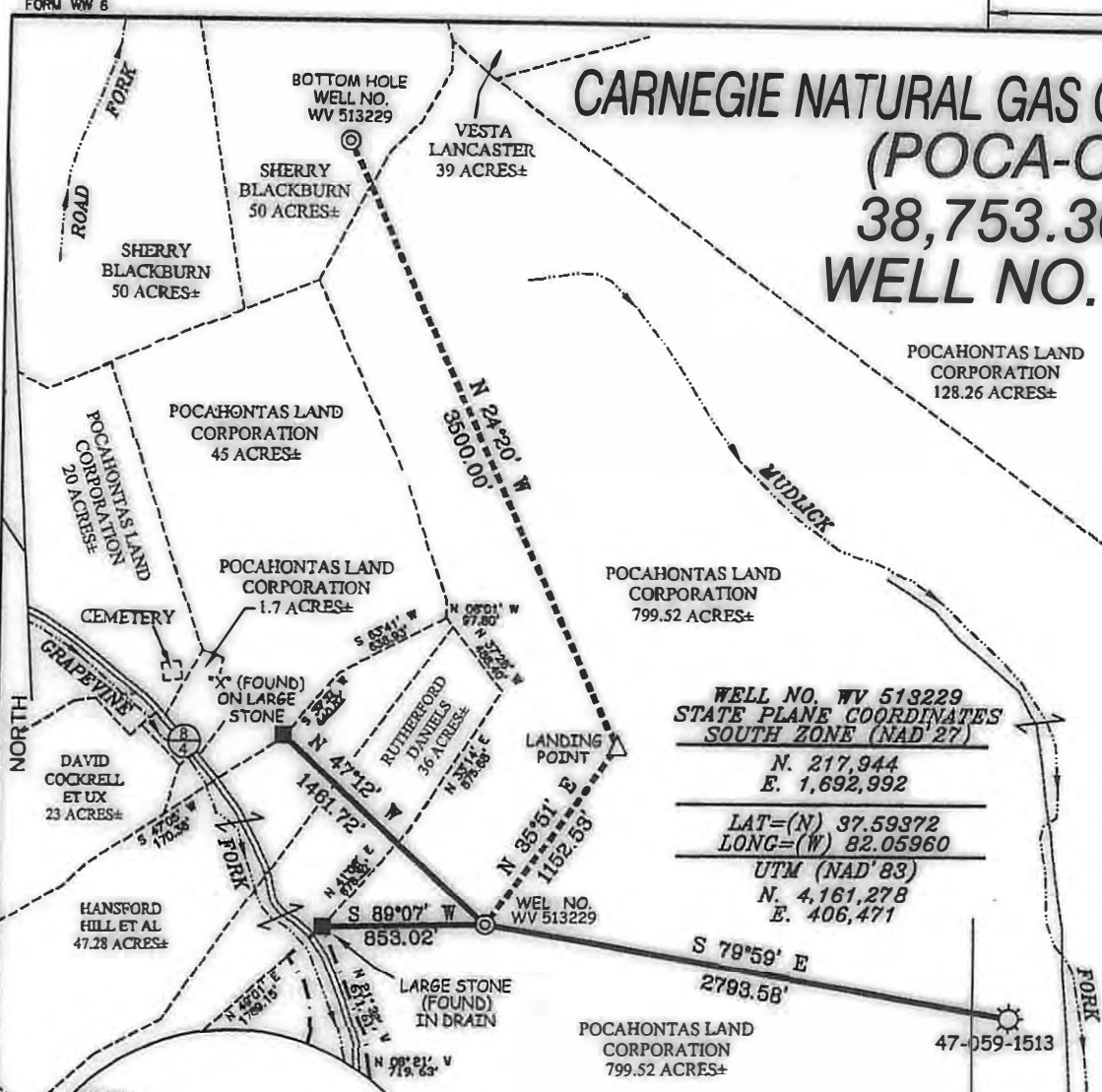


CARNEGIE NATURAL GAS COMPANY LEASE (POCA-CARNEGIE) 38,753.36 ACRES± WELL NO. WV 513229



BOTTOM HOLE
WELL NO. WV 513229
STATE PLANE COORDINATES
SOUTH ZONE (NAD '27)

N. 222,067
E. 1,692,224

LAT=(N) 37.60502
LONG=(W) 82.06241

UTM (NAD'83)
N. 4,162,535
E. 406,237

LANDING POINT
WELL NO. WV 513229
STATE PLANE COORDINATES
SOUTH ZONE (NAD '27)

N. 218,878
E. 1,693,667

LAT=(N) 37.59631
LONG=(W) 82.05730

UTM (NAD'83)
N. 4,161,563
E. 406,677

EXISTING WELL
A.P.I. #47-059-1511
STATE PLANE COORDINATES
SOUTH ZONE (NAD '27)

N. 217,925
E. 1,692,950

LAT=(N) 37.59367
LONG=(W) 82.05974

WELL NO. WV 513229
STATE PLANE COORDINATES
SOUTH ZONE (NAD '27)

N. 217,944
E. 1,692,992

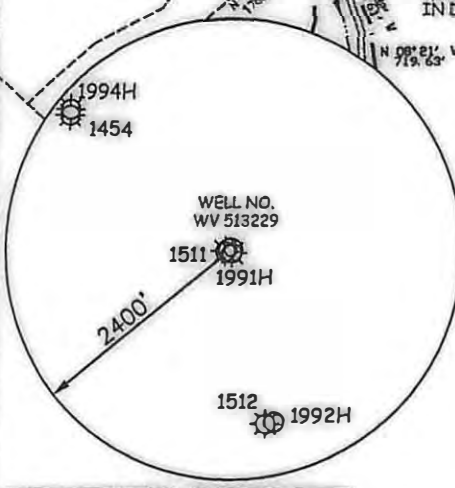
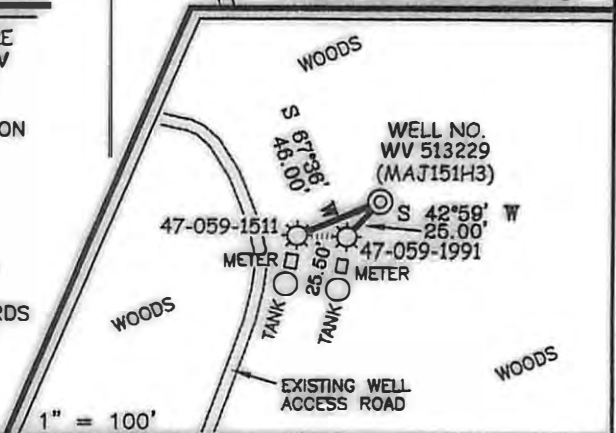
LAT=(N) 37.59372
LONG=(W) 82.05960

UTM (NAD'83)
N. 4,161,278
E. 406,471

NOTES ON SURVEY

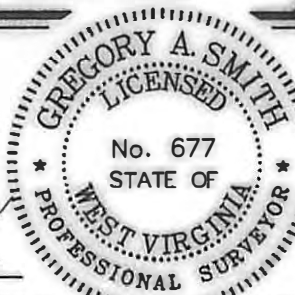
1. TIES TO WELLS AND CORNERS ARE BASED ON GRID NORTH FOR THE WV STATE PLANE COORDINATE SYSTEM SOUTH ZONE NAD '27.
2. TIES TO REFERENCES ARE BASED ON MAGNETIC NORTH 10/14/10.
3. LEASE AND TRACT BOUNDARIES SHOWN HEREON TAKEN FROM POCAHONTAS LAND CORPORATION PROPERTY MAPS (SHEET 11).
4. SURFACE OWNER AND ADJOINER INFORMATION TAKEN FROM THE ASSESSOR AND COUNTY CLERK RECORDS OF MINGO COUNTY IN JULY, 2010.
5. WELL LAT./LONG. (NAD'27) ESTABLISHED BY DGPS(SUBMETER MAPPING GRADE).

REFERENCES



I THE UNDERSIGNED, HEREBY CERTIFY THAT THIS PLAT IS CORRECT TO THE BEST OF MY KNOWLEDGE AND BELIEF AND SHOWS ALL THE INFORMATION REQUIRED BY LAW AND THE REGULATIONS ISSUED AND PRESCRIBED BY THE DIVISION OF ENVIRONMENTAL PROTECTION.

P.S. 677 *Gregory A. Smith*



(+) DENOTES LOCATION OF WELL ON UNITED STATES TOPOGRAPHIC MAPS.

DATE OCTOBER 19, 20 10

OPERATORS WELL NO. WV 513229

API WELL NO. 47-059-02198H

STATE COUNTY PERMIT

CANCELLED
STATE OF WEST VIRGINIA
DIVISION OF ENVIRONMENTAL PROTECTION
OFFICE OF OIL AND GAS



MINIMUM DEGREE OF ACCURACY 1/2500 FILE NO. 4672P513229 (299-48 & 311-71)

PROVEN SOURCE OF ELEVATION DGPS (SUBMETER MAPPING GRADE) SCALE 1" = 1,000'

WELL TYPE: OIL GAS INJECTION WAS E IF "GAS" PRODUCTION STORAGE DEEP SHALLOW

LOCATION: ELEVATION 1,335' WATERSHED GRAPEVINE FORK OF BEECH CREEK

DISTRICT MAGNOLIA COUNTY MINGO QUADRANGLE MAJESTIC 7.5'

SURFACE OWNER POCAHONTAS LAND CORPORATION ACREAGE 799.52±

ROYALTY OWNER PENN VIRGINIA OIL & GAS CORPORATION LEASE ACREAGE 38,753.36±

PROPOSED WORK: LEASE NO. 717459

DRILL CONVERT DRILL DEEPER REDRILL FRACTURE OR STIMULATE PLUG OFF OLD FORMATION PERFORATE NEW FORMATION PLUG AND ABANDON CLEAN OUT AND REPLUG OTHER

PHYSICAL CHANGE IN WELL (SPECIFY) _____ TARGET FORMATION LOWER HURON
ESTIMATED DEPTH 4,880' (TOTAL VERTICAL DEPTH)

WELL OPERATOR EQT PRODUCTION COMPANY DESIGNATED AGENT REX C. RAY

ADDRESS 1710 PENNSYLVANIA AVENUE ADDRESS 1710 PENNSYLVANIA AVENUE
CHARLESTON, WV 25302 CHARLESTON, WV 25302