

ISLAND CREEK COAL CO. LEASE 60,000 ACRES± WELL NO. WV 513275

**BOTTOM HOLE
WELL NO. WV 513275
STATE PLANE COORDINATES
SOUTH ZONE (NAD 27)**

N. 258,544
E. 1,672,309

LAT=(N) 37.70454
LONG=(W) 82.13269

UTM (NAD 83)
N. 4,173,649
E. 400,167

**WELL NO. WV 513275
STATE PLANE COORDINATES
SOUTH ZONE (NAD 27)**

N. 254,213
E. 1,677,927

LAT=(N) 37.69284
LONG=(W) 82.11309

UTM (NAD 83)
N. 4,172,330
E. 401,879

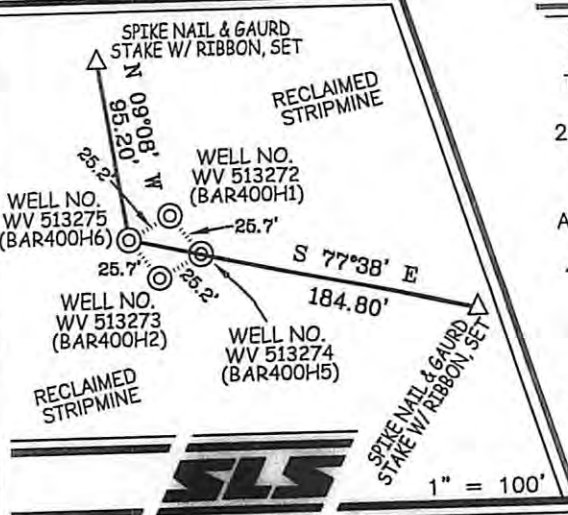
**LANDING POINT -
WELL NO. WV 513275
STATE PLANE COORDINATES
SOUTH ZONE (NAD 27)**

N. 253,925
E. 1,676,811

LAT=(N) 37.69201
LONG=(W) 82.11693

UTM (NAD 83)
N. 4,172,242
E. 401,539

REFERENCES



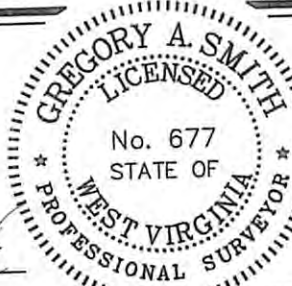
NOTES ON SURVEY

1. TIES TO WELLS AND CORNERS ARE BASED ON GRID NORTH FOR THE WV STATE PLANE COORDINATE SYSTEM SOUTH ZONE NAD '27.
2. TIES TO REFERENCES ARE BASED ON MAGNETIC NORTH 05/19/10.
3. LEASE BOUNDARY DOES NOT APPEAR WITHIN THE SCOPE OF THIS PLAT.
4. SURFACE OWNER AND ADJOINER INFORMATION TAKEN FROM THE ASSESSOR AND COUNTY CLERK RECORDS OF MINGO COUNTY IN JULY, 2010.
5. WELL LAT./LONG. ESTABLISHED BY DGPS(SUBMETER MAPPING GRADE).

I THE UNDERSIGNED, HEREBY CERTIFY THAT THIS PLAT IS CORRECT TO THE BEST OF MY KNOWLEDGE AND BELIEF AND SHOWS ALL THE INFORMATION REQUIRED BY LAW AND THE REGULATIONS ISSUED AND PRESCRIBED BY THE DIVISION OF ENVIRONMENTAL PROTECTION.

P.S.
677

Gregory A. Smith



(+) DENOTES LOCATION OF WELL ON UNITED STATES TOPOGRAPHIC MAPS.
DATE SEPTEMBER 17, 20 10
OPERATORS WELL NO. WV 513275
API WELL NO. 47-059-021814
STATE COUNTY PERMIT

MINIMUM DEGREE OF ACCURACY 1/2500 FILE NO. 3890P513275 (299-65)
SCALE 1" = 2,000'

STATE OF WEST VIRGINIA
DIVISION OF ENVIRONMENTAL PROTECTION
OFFICE OF OIL AND GAS

PROVEN SOURCE OF ELEVATION DGPS (SUBMETER MAPPING GRADE)

WELL TYPE: OIL GAS LIQUID INJECTION WASTE DISPOSAL IF "GAS" PRODUCTION STORAGE DEEP SHALLOW

LOCATION: ELEVATION 1,740' WATERSHED ROCKHOUSE FORK OF PIGEON CREEK
DISTRICT LEE COUNTY MINGO QUADRANGLE BARNABUS 7.5'

SURFACE OWNER THE MINGO COUNTY REDEVELOPMENT AUTHORITY ACREAGE 624.71± (RESIDUE OF 964.88±)
ROYALTY OWNER ISLAND CREEK CORPORATION LEASE ACREAGE 60,000±
LEASE NO. 080662

PROPOSED WORK: DRILL CONVERT DRILL DEEPER REDRILL FRACTURE OR STIMULATE PLUG OFF OLD FORMATION PERFORATE NEW FORMATION PLUG AND ABANDON CLEAN OUT AND REPLUG OTHER

PHYSICAL CHANGE IN WELL (SPECIFY) _____ TARGET FORMATION LOWER HURON
ESTIMATED DEPTH 5,130' (TOTAL VERTICAL DEPTH)

WELL OPERATOR EQT PRODUCTION COMPANY DESIGNATED AGENT REX C. RAY
ADDRESS 1710 PENNSYLVANIA AVENUE ADDRESS 1710 PENNSYLVANIA AVENUE
CHARLESTON, WV 25302 CHARLESTON, WV 25302

11/16/2012