

ISLAND CREEK COAL CO. LEASE 60,000 ACRES± WELL NO. WV 513273

HEARTWOOD FORESTLAND FUND
838.67 ACRES±

PLUGGED WELL

SOUTH BRANCH

BOTTOM HOLE
WELL NO. WV 513273
STATE PLANE COORDINATES
SOUTH ZONE (NAD 27)

N. 249,219
E. 1,682,867

LAT=(N) 37.67928
LONG=(W) 82.09581

UTM (NAD 83)
N. 4,170,808
E. 403,385

WELL NO. WV 513273
STATE PLANE COORDINATES
SOUTH ZONE (NAD 27)

N. 254,196
E. 1,677,944

LAT=(N) 37.69279
LONG=(W) 82.11303

UTM (NAD 83)
N. 4,172,324
E. 401,884

WHITE FLAME ENERGY, INC.
1,538.67 ACRES±

N 36°22' W
4936.96'

WELL NO. WV 513273

2400'
1173-P

WELL NO. WV 513273

P/O THE MINGO COUNTY REDEVELOPMENT AUTHORITY
624.71 ACRES±

HEARTWOOD FORESTLAND FUND
224.68 ACRES±

FUND 8 DOMESTIC, LLC
115.8 ACRES±

DRAIN

HEARTWOOD FORESTLAND FUND
224.68 ACRES±

FUND 8 DOMESTIC, LLC
115.8 ACRES±

ROCKHOUSE

ARK LAND COMPANY
3.37 ACRES±

S 70°00' E
7000.00'

THE MINGO COUNTY AIRPORT AUTHORITY
340.17 ACRES±

LEE MAGNOLIA

THE MINGO COUNTY REDEVELOPMENT AUTHORITY
624.71 ACRES±

ARK LAND COMPANY
110.27 ACRES±

OLDFIELD BRANCH

ARK LAND COMPANY
110.27 ACRES±

EQUITABLE GATHERING EQUITY, LLC
55.05 ACRES±

THE MINGO COUNTY REDEVELOPMENT AUTHORITY
624.71 ACRES±

OLDFIELD BRANCH

ARK LAND COMPANY
110.27 ACRES±

BOTTOM HOLE WELL NO. WV 513273

EDDIE HURLEY
272.98 ACRES±

65

65

52

15

65

52

15

65

52

15

65

52

15

65

52

15

65

52

15

65

52

15

65

52

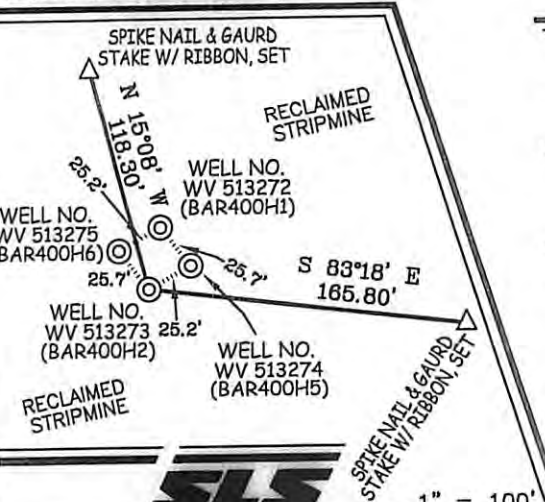
15

65

52

15

REFERENCES

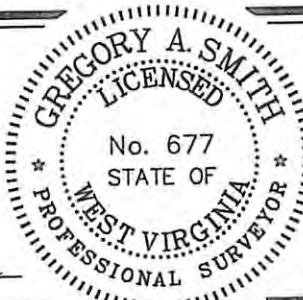


NOTES ON SURVEY

1. TIES TO WELLS AND CORNERS ARE BASED ON GRID NORTH FOR THE WV STATE PLANE COORDINATE SYSTEM SOUTH ZONE NAD '27.
2. TIES TO REFERENCES ARE BASED ON MAGNETIC NORTH 05/19/10.
3. LEASE BOUNDARY DOES NOT APPEAR WITHIN THE SCOPE OF THIS PLAT.
4. SURFACE OWNER AND ADJOINER INFORMATION TAKEN FROM THE ASSESSOR AND COUNTY CLERK RECORDS OF MINGO COUNTY IN JULY, 2010.
5. WELL LAT./LONG. ESTABLISHED BY DGPS(SUBMETER MAPPING GRADE).

I THE UNDERSIGNED, HEREBY CERTIFY THAT THIS PLAT IS CORRECT TO THE BEST OF MY KNOWLEDGE AND BELIEF AND SHOWS ALL THE INFORMATION REQUIRED BY LAW AND THE REGULATIONS ISSUED AND PRESCRIBED BY THE DIVISION OF ENVIRONMENTAL PROTECTION.

P.S. 677
Gregory A. Smith



(+) DENOTES LOCATION OF WELL ON UNITED STATES TOPOGRAPHIC MAPS.

DATE SEPTEMBER 17, 20 10

OPERATORS WELL NO. WV 513273

API WELL NO. 47-059-02179H
STATE COUNTY PERMIT

MINIMUM DEGREE OF ACCURACY 1/2500 FILE NO. 3890P513273 (299-65)

PROVEN SOURCE OF ELEVATION DGPS (SUBMETER MAPPING GRADE) SCALE 1" = 2,000'

STATE OF WEST VIRGINIA
DIVISION OF ENVIRONMENTAL PROTECTION
OFFICE OF OIL AND GAS



WELL TYPE: OIL ___ GAS LIQUID INJECTION ___ WASTE DISPOSAL ___ IF "GAS" PRODUCTION STORAGE ___ DEEP ___ SHALLOW

LOCATION: ELEVATION 1,740' WATERSHED ROCKHOUSE FORK OF PIGEON CREEK

DISTRICT LEE COUNTY MINGO QUADRANGLE BARNABUS 7.5'

SURFACE OWNER THE MINGO COUNTY REDEVELOPMENT AUTHORITY ACREAGE 624.71± (RESIDUE OF 964.88±)

ROYALTY OWNER ISLAND CREEK CORPORATION LEASE ACREAGE 60,000±

PROPOSED WORK: DRILL CONVERT ___ DRILL DEEPER ___ REDRILL ___ FRACTURE OR STIMULATE PLUG OFF OLD FORMATION ___ PERFORATE NEW FORMATION ___ PLUG AND ABANDON ___ CLEAN OUT AND REPLUG ___ OTHER ___

PHYSICAL CHANGE IN WELL (SPECIFY) TARGET FORMATION LOWER HURON ESTIMATED DEPTH 5,130' (TOTAL VERTICAL DEPTH)

WELL OPERATOR EQT PRODUCTION COMPANY DESIGNATED AGENT REX C. RAY
ADDRESS 1710 PENNSYLVANIA AVENUE CHARLESTON, WV 25302