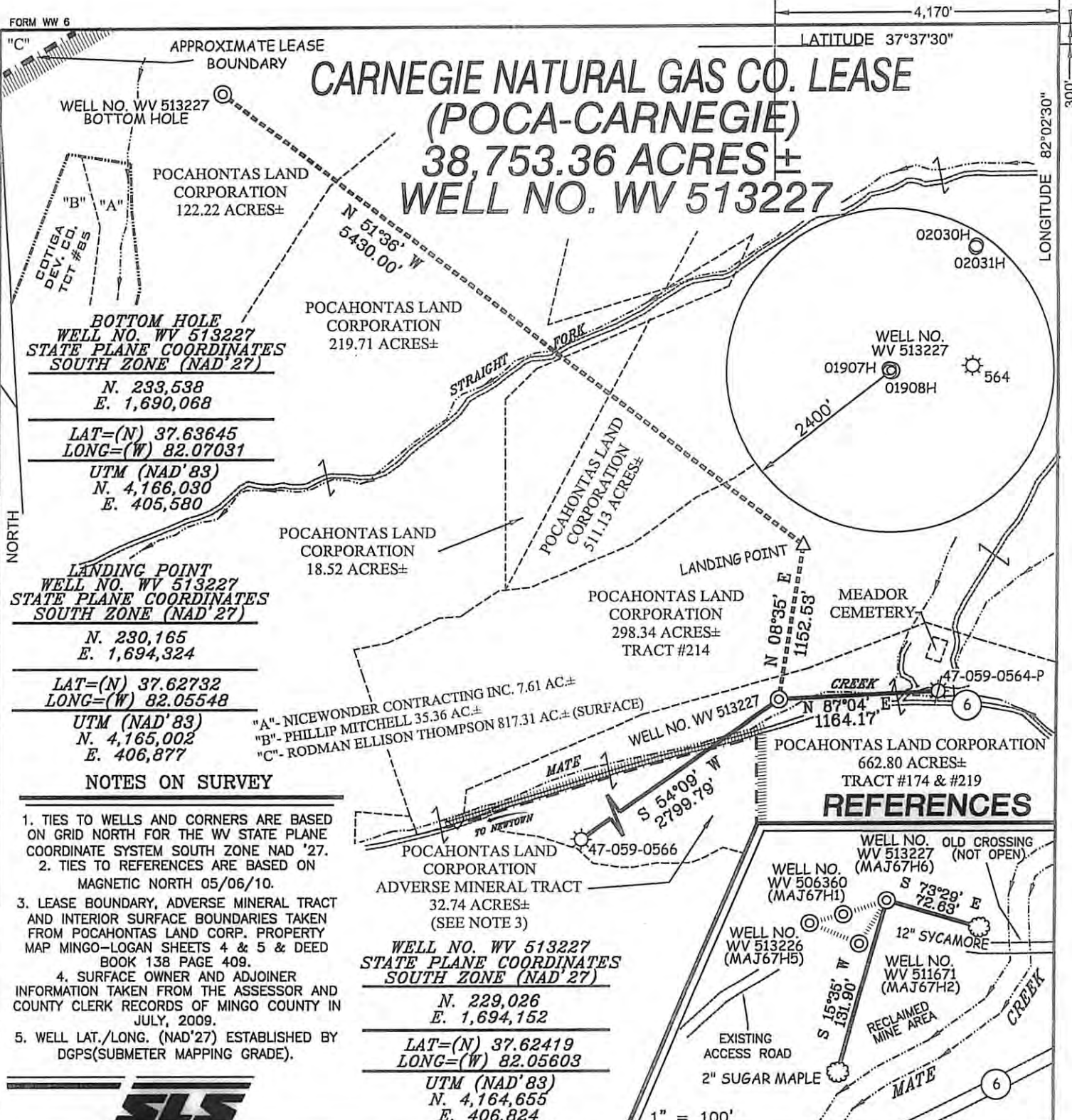


# CARNEGIE NATURAL GAS CO. LEASE (POCA-CARNEGIE) 38,753.36 ACRES ± WELL NO. WV 513227



**BOTTOM HOLE**  
WELL NO. WV 513227  
STATE PLANE COORDINATES  
SOUTH ZONE (NAD'27)

N. 233,538  
E. 1,690,068

LAT=(N) 37.63645  
LONG=(W) 82.07031

UTM (NAD'83)  
N. 4,166,030  
E. 405,580

**LANDING POINT**  
WELL NO. WV 513227  
STATE PLANE COORDINATES  
SOUTH ZONE (NAD'27)

N. 230,165  
E. 1,694,324

LAT=(N) 37.62732  
LONG=(W) 82.05548

UTM (NAD'83)  
N. 4,165,002  
E. 406,877

"A"- NICEWONDER CONTRACTING INC. 7.61 AC ±  
"B"- PHILLIP MITCHELL 35.36 AC ±  
"C"- RODMAN ELLISON THOMPSON 817.31 AC ± (SURFACE)

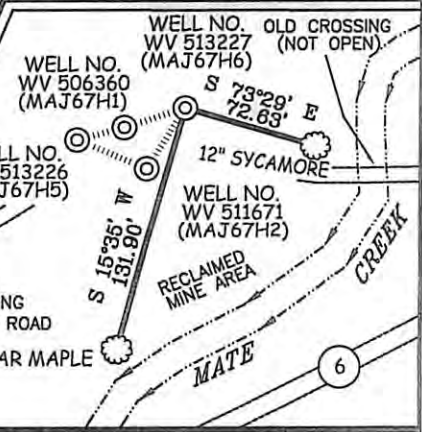
WELL NO. WV 513227  
STATE PLANE COORDINATES  
SOUTH ZONE (NAD'27)

N. 229,026  
E. 1,694,152

LAT=(N) 37.62419  
LONG=(W) 82.05603

UTM (NAD'83)  
N. 4,164,655  
E. 406,824

### REFERENCES



- NOTES ON SURVEY**
- TIES TO WELLS AND CORNERS ARE BASED ON GRID NORTH FOR THE WV STATE PLANE COORDINATE SYSTEM SOUTH ZONE NAD '27.
  - TIES TO REFERENCES ARE BASED ON MAGNETIC NORTH 05/06/10.
  - LEASE BOUNDARY, ADVERSE MINERAL TRACT AND INTERIOR SURFACE BOUNDARIES TAKEN FROM POCAHONTAS LAND CORP. PROPERTY MAP MINGO-LOGAN SHEETS 4 & 5 & DEED BOOK 138 PAGE 409.
  - SURFACE OWNER AND ADJOINER INFORMATION TAKEN FROM THE ASSESSOR AND COUNTY CLERK RECORDS OF MINGO COUNTY IN JULY, 2009.
  - WELL LAT./LONG. (NAD'27) ESTABLISHED BY DGPS(SUBMETER MAPPING GRADE).



I THE UNDERSIGNED, HEREBY CERTIFY THAT THIS PLAT IS CORRECT TO THE BEST OF MY KNOWLEDGE AND BELIEF AND SHOWS ALL THE INFORMATION REQUIRED BY LAW AND THE REGULATIONS ISSUED AND PRESCRIBED BY THE DIVISION OF ENVIRONMENTAL PROTECTION.

P.S.  
677

*Gregory A. Smith*



(+) DENOTES LOCATION OF WELL ON UNITED STATES TOPOGRAPHIC MAPS.

DATE JULY 20, 20 10

OPERATORS WELL NO. WV 513227

API WELL NO. 47-059-02172H

STATE COUNTY PERMIT

MINIMUM DEGREE OF ACCURACY 1/2500 FILE NO. 4672P513227 (299-45)

PROVEN SOURCE OF ELEVATION DGPS (SUBMETER MAPPING GRADE) SCALE 1" = 1000'

STATE OF WEST VIRGINIA  
DIVISION OF ENVIRONMENTAL PROTECTION  
OFFICE OF OIL AND GAS

WELL TYPE: OIL  GAS  LIQUID INJECTION  WASTE DISPOSAL  IF "GAS" PRODUCTION  STORAGE  DEEP  SHALLOW

LOCATION: ELEVATION 1,208' WATERSHED MATE CREEK

DISTRICT MAGNOLIA COUNTY MINGO QUADRANGLE MAJESTIC 7.5'

SURFACE OWNER POCAHONTAS LAND CORPORATION ACREAGE 662.8±

ROYALTY OWNER PENN VIRGINIA OIL & GAS CORPORATION LEASE ACREAGE 38,753.36±

PROPOSED WORK: LEASE NO. 717459

DRILL  CONVERT  DRILL DEEPER  REDRILL  FRACTURE OR STIMULATE  PLUG OFF OLD FORMATION  PERFORATE NEW FORMATION  PLUG AND ABANDON  CLEAN OUT AND REPLUG  OTHER

PHYSICAL CHANGE IN WELL (SPECIFY) \_\_\_\_\_ TARGET FORMATION LOWER HURON

ESTIMATED DEPTH 4,720' (TOTAL VERTICAL DEPTH)

WELL OPERATOR EQT PRODUCTION COMPANY DESIGNATED AGENT REX C. RAY

ADDRESS 1710 PENNSYLVANIA AVENUE ADDRESS 1710 PENNSYLVANIA AVENUE  
CHARLESTON, WV 25302 CHARLESTON, WV 25302

11/16/2012