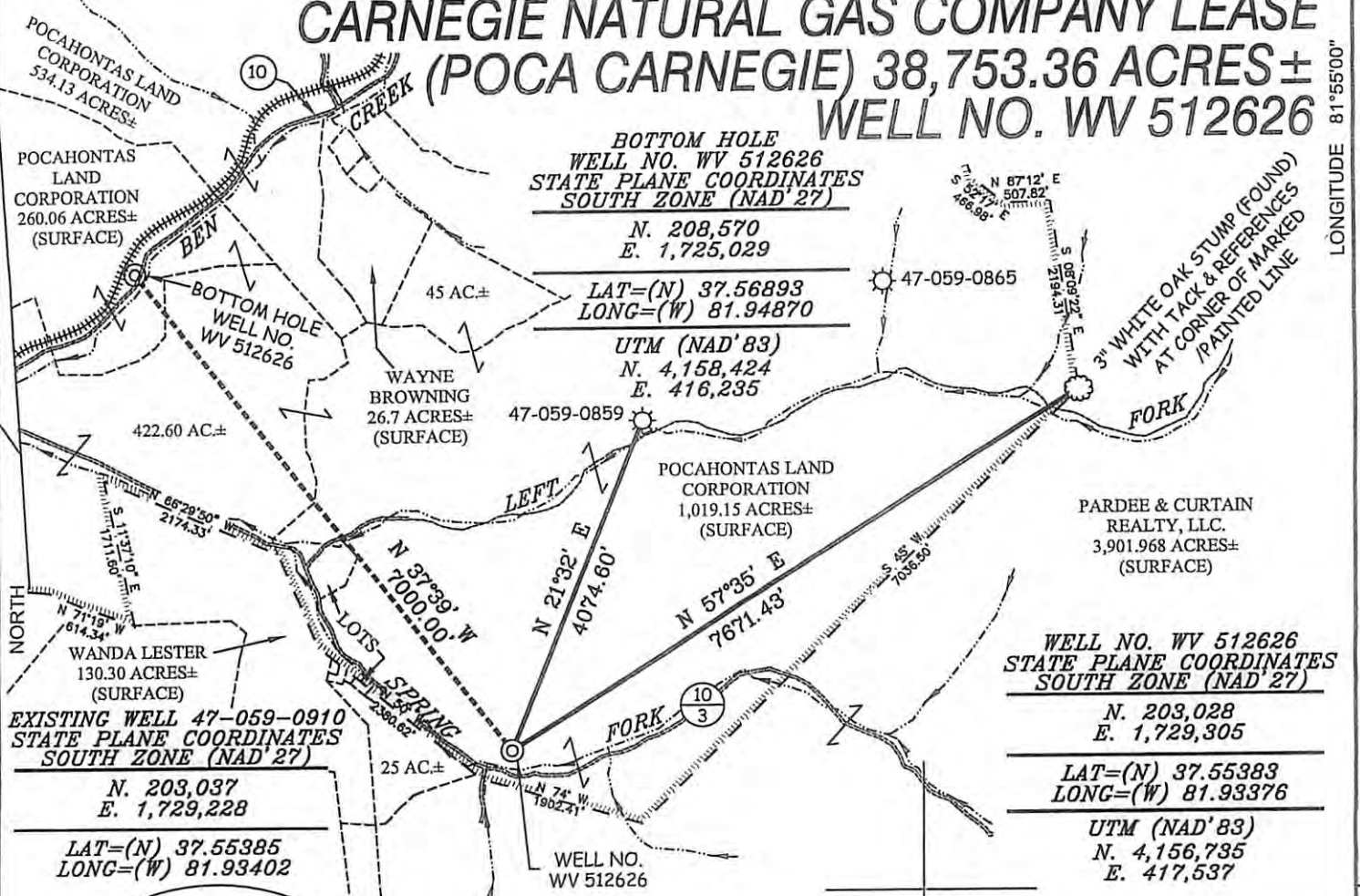


CARNEGIE NATURAL GAS COMPANY LEASE (POCA CARNEGIE) 38,753.36 ACRES ± WELL NO. WV 512626



BOTTOM HOLE
WELL NO. WV 512626
STATE PLANE COORDINATES
SOUTH ZONE (NAD'27)

N. 208,570
E. 1,725,029

LAT=(N) 37.56893
LONG=(W) 81.94870

UTM (NAD'83)
N. 4,158,424
E. 416,235

WELL NO. WV 512626
STATE PLANE COORDINATES
SOUTH ZONE (NAD'27)

N. 203,028
E. 1,729,305

LAT=(N) 37.55383
LONG=(W) 81.93376

UTM (NAD'83)
N. 4,156,735
E. 417,537

EXISTING WELL 47-059-0910
STATE PLANE COORDINATES
SOUTH ZONE (NAD'27)

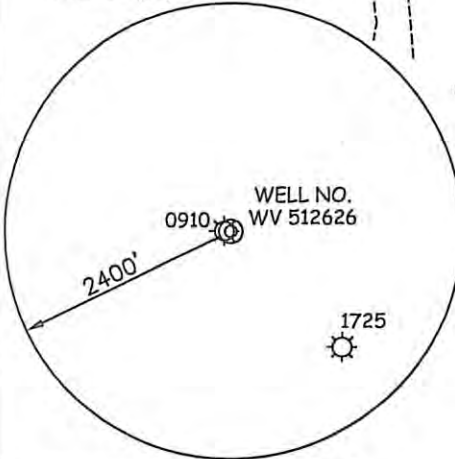
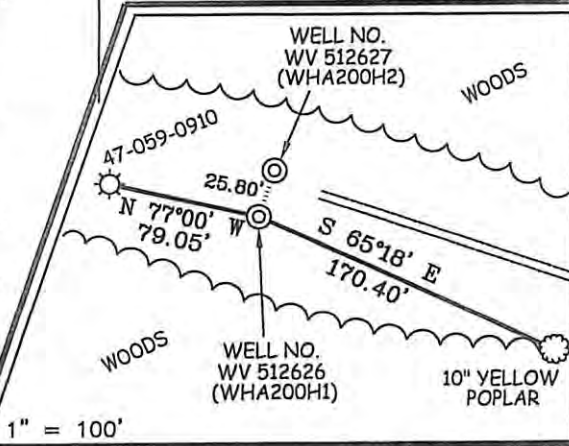
N. 203,037
E. 1,729,228

LAT=(N) 37.55385
LONG=(W) 81.93402

NOTES ON SURVEY

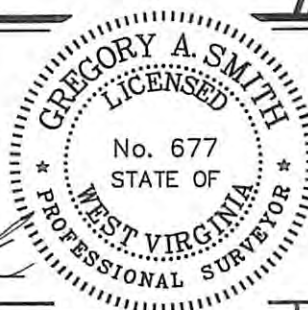
1. TIES TO WELLS AND CORNERS ARE BASED ON GRID NORTH FOR THE WV STATE PLANE COORDINATE SYSTEM SOUTH ZONE NAD'27.
2. TIES TO REFERENCES ARE BASED ON MAGNETIC NORTH 03/11/10.
3. LEASE BOUNDARY SHOWN HEREON TAKEN FROM POCAHONTAS LAND CORPORATION MAPPING SHEETS 14, 15 & 18.
4. SURFACE OWNER AND ADJOINER INFORMATION TAKEN FROM THE ASSESSOR AND COUNTY CLERK RECORDS OF MINGO COUNTY IN JULY, 2009.
5. WELL LAT./LONG. (NAD'27) ESTABLISHED BY DGPS (SUBMETER MAPPING GRADE).

REFERENCES



I THE UNDERSIGNED, HEREBY CERTIFY THAT THIS PLAT IS CORRECT TO THE BEST OF MY KNOWLEDGE AND BELIEF AND SHOWS ALL THE INFORMATION REQUIRED BY LAW AND THE REGULATIONS ISSUED AND PRESCRIBED BY THE DIVISION OF ENVIRONMENTAL PROTECTION.

P.S. 677 *Gregory A. Smith*



(+) DENOTES LOCATION OF WELL ON UNITED STATES TOPOGRAPHIC MAPS.
DATE JUNE 03, 20 10
OPERATORS WELL NO. WV 512626
API WELL NO. 47-059-02162H
STATE CANCELLED COUNTY PERMIT

MINIMUM DEGREE OF ACCURACY 1/2500 FILE NO. 4672P512626 (299-1)
PROVEN SOURCE OF ELEVATION DGPS (SUBMETER MAPPING GRADE) SCALE 1" = 2000'

STATE OF WEST VIRGINIA
DIVISION OF ENVIRONMENTAL PROTECTION
OFFICE OF OIL AND GAS

WELL TYPE: OIL GAS LIQUID INJECTION WASTE DISPOSAL IF "GAS" PRODUCTION STORAGE DEEP SHALLOW

LOCATION: ELEVATION 1,161' WATERSHED SPRING FORK OF BEN CREEK
DISTRICT STAFFORD COUNTY MINGO QUADRANGLE WHARNCLIFFE 7.5'

SURFACE OWNER POCAHONTAS LAND CORPORATION ACREAGE 1,019.15±
ROYALTY OWNER PENN VIRGINIA OIL & GAS CORPORATION LEASE ACREAGE 38,753.36±
PROPOSED WORK: LEASE NO. 717459

DRILL CONVERT DRILL DEEPER REDRILL FRACTURE OR STIMULATE PLUG OFF OLD FORMATION PERFORATE NEW FORMATION PLUG AND ABANDON CLEAN OUT AND REPLUG OTHER

PHYSICAL CHANGE IN WELL (SPECIFY) TARGET FORMATION LOWER HURON
ESTIMATED DEPTH 4,980' (TOTAL VERTICAL DEPTH)

WELL OPERATOR EQT PRODUCTION COMPANY DESIGNATED AGENT REX C. RAY
ADDRESS 1710 PENNSYLVANIA AVENUE ADDRESS 1710 PENNSYLVANIA AVENUE
CHARLESTON, WV 25302 CHARLESTON, WV 25302