

EQT PRODUCTION COMPANY WELL NO. WV 511985

LATITUDE 37°37'30"

WELL NO. WV 511985
STATE PLANE COORDINATES
(SOUTH ZONE)

N. 227,766
E. 1,697,650

LAT=(N) 37.62084
LONG=(W) 82.04390

POCAHONTAS
LAND CORP.
298.34 ACRES±

POCAHONTAS
LAND CORP.
658.45 ACRES±

POCAHONTAS
LAND CORP.
658.45 ACRES±

POCAHONTAS
LAND CORP.
658.45 ACRES±

VICKIE FIELDS,
ET AL
39 ACRES±

COTIGA
DEV. CO.
TCT #79
100 AC±

PATRICIA
STATEN
54 ACRES±

POCAHONTAS
LAND CORP.
10.46 ACRES±

POCAHONTAS
LAND CORP.
354.37 ACRES±

WELL NO. WV 511985
BOTTOM HOLE

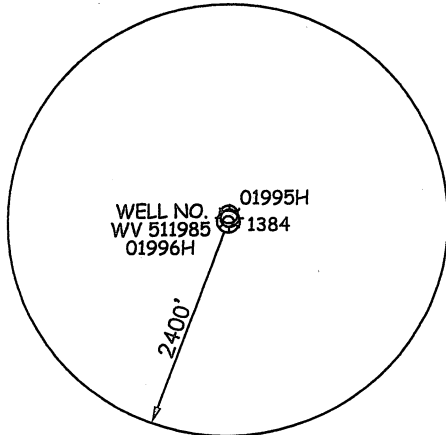
WELL NO. WV 511985
BOTTOM HOLE
STATE PLANE COORDINATES
(SOUTH ZONE)

N. 223,666
E. 1,703,323

LAT=(N) 37.60975
LONG=(W) 82.02416

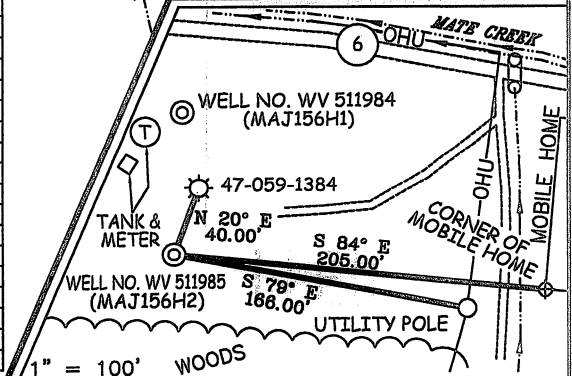
NOTES ON SURVEY

1. TIES TO WELLS AND CORNERS ARE BASED ON GRID NORTH FOR THE WV STATE PLANE COORDINATE SYSTEM SOUTH ZONE NAD '27.
2. TIES TO REFERENCES ARE BASED ON MAGNETIC NORTH 10/29/08.
3. COTIGA TCT #79 BOUNDARY TAKEN FROM DEED BOOK "N" PAGE 385 AND POCAHONTAS LAND CORPORATION MAPPING.
4. SURFACE OWNER AND ADJOINER INFORMATION TAKEN FROM THE ASSESSOR AND COUNTY CLERK RECORDS OF MINGO COUNTY IN JULY, 2008.
5. WELL LAT./LONG. (NAD'27) ESTABLISHED BY DGPS(SUBMETER MAPPING GRADE).
6. PLAT DATED 11/12/08 REVISED 03/22/10 TO ROTATE & EXTEND HORIZONTAL LEG AND CHANGE BOTTOM HOLE COORDINATES, ETC.

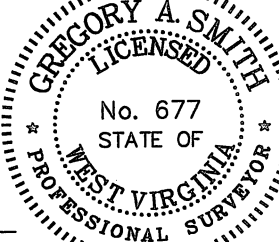


(A) C. MARCUM 0.75 ACRES±
(B) E. HANNAH 0.86 ACRES±
(C) B. SIPPLE LOT
(D) C. MULLINS 0.79 ACRES±
(E) B. SIPPLE 1 ACRES±
(F) D. STUMP 18.07 ACRES±
(G) H3 LLC 44 ACRES±
(H) POCAHONTAS LAND CORP. 4.89 ACRES±
(I) L. CANTRELL 2.5 ACRES±
(J) L. CANTRELL 0.50 ACRES±
(K) NANCY SIPPLE, ET AL 10 ACRES±
(L) VIRGIL L. SIPPLE, ET AL 10 ACRES±
(M) POCAHONTAS LAND CORP. 32.14 ACRES±
(N) JAMES T. JARRELL, ET AL 13 ACRES±
(O) POCAHONTAS LAND CORP. 8.37 ACRES±
(P) CAM KENTUCKY REAL ESTATE LLC 38.90 ACRES±
(Q) CAM KENTUCKY REAL ESTATE LLC 50 ACRES±
(R) POCAHONTAS LAND CORP. 100 ACRES±
(S) SCOTTY DANIELS ET UX 1 ACRE±
(T) RUSSELL SIMPKINS 28.76 ACRES±
(U) ROBERT & EVELYN ESTEP 7.50 ACRES±
(V) JOSEPH GOAD ET UX 15.5 ACRES±
(W) VALLEY CISCO ET UX 28.36 ACRES±
(X) THOMAS E. ESTEP ET UX 9.45 ACRES±

REFERENCES



I THE UNDERSIGNED, HEREBY CERTIFY THAT THIS PLAT IS CORRECT TO THE BEST OF MY KNOWLEDGE AND BELIEF AND SHOWS ALL THE INFORMATION REQUIRED BY LAW AND THE REGULATIONS ISSUED AND PRESCRIBED BY THE DIVISION OF ENVIRONMENTAL PROTECTION.



P.S. 677 *Gregory A. Smith*

(+) DENOTES LOCATION OF WELL ON UNITED STATES TOPOGRAPHIC MAPS.
DATE MARCH 22, 20 10
OPERATORS WELL NO. WV 511985
API WELL NO. 47-059-01996H
NO. 01996H COUNTY MAJESTIC PERMIT CANCELLED

MINIMUM DEGREE OF ACCURACY 1/2500 FILE NO. 4672P511985R (265-73)
PROVEN SOURCE OF ELEVATION DGPS (SUBMETER MAPPING GRADE) SCALE 1" = 2000'

STATE OF WEST VIRGINIA
DIVISION OF ENVIRONMENTAL PROTECTION
OFFICE OF OIL AND GAS

WELL TYPE: OIL GAS LIQUID INJECTION WASTE DISPOSAL IF "GAS" PRODUCTION STORAGE DEEP SHALLOW

LOCATION: ELEVATION 1,335' WATERSHED MATE CREEK
DISTRICT MAGNOLIA COUNTY MINGO QUADRANGLE MAJESTIC 7.5'

SURFACE OWNER POCAHONTAS LAND CORPORATION ACREAGE 658.45±

ROYALTY OWNER PENN VIRGINIA OIL & GAS CORPORATION (38,753.36±) / COTIGA DEVELOPMENT COMPANY (100± & 104±)

PROPOSED WORK: LEASE NO. 717459
DRILL CONVERT DRILL DEEPER REDRILL FRACTURE OR STIMULATE PLUG OFF OLD
FORMATION PERFORATE NEW FORMATION PLUG AND ABANDON CLEAN OUT AND REPLUG OTHER
PHYSICAL CHANGE IN WELL (SPECIFY) TARGET FORMATION LOWER HURON
ESTIMATED DEPTH 4,870' (TOTAL VERTICAL DEPTH)

WELL OPERATOR EQT PRODUCTION COMPANY DESIGNATED AGENT REX C. RAY
ADDRESS 1710 PENNSYLVANIA AVENUE ADDRESS 1710 PENNSYLVANIA AVENUE
CHARLESTON, WV 25302 CHARLESTON, WV 25302