

CARNEGIE NATURAL GAS CO. LEASE (POCA CARNEGIE) 38,753.36 ACRES ± WELL NO. WV 506360

WELL NO. WV 506360
BOTTOM HOLE
STATE PLANE COORDINATES
(SOUTH ZONE)

N. 231,665
E. 1,691,447

LAT=(N) 37.631350
LONG=(W) 82.065470

LATITUDE 37°37'30"

LONGITUDE 82°02'30"

WELL NO. WV 506360
STATE PLANE COORDINATES
(SOUTH ZONE)

N. 229,013
E. 1,694,121

LAT=(N) 37.624150
LONG=(W) 82.056134

WELL NO. WV 506360
BOTTOM HOLE

POCAHONTAS LAND CORPORATION
298.34 ACRES ±
TRACT #214

WELL NO. WV 506360

CREEK

N 86°31' E
1195.45'

POCAHONTAS LAND CORPORATION
662.80 ACRES ±
TRACT #174 & #219

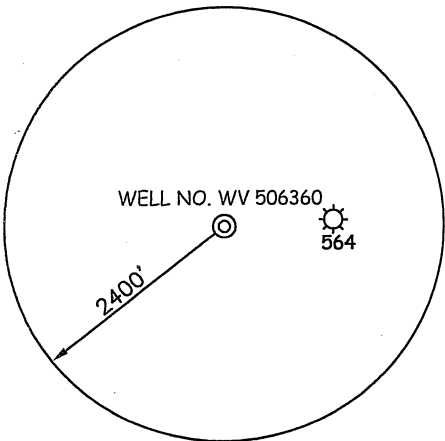
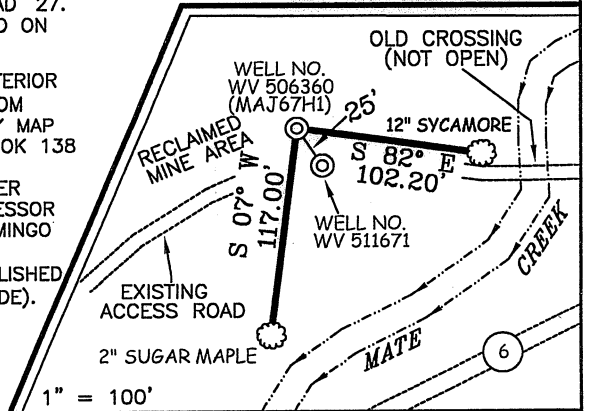
POCAHONTAS LAND CORPORATION
ADVERSE MINERAL TRACT
32.74 ACRES ±
(SEE NOTE 3)

POCAHONTAS LAND CORPORATION
32.14 ACRES ±
TRACT #174 & #219

NOTES ON SURVEY

1. TIES TO WELLS AND CORNERS ARE BASED ON GRID NORTH FOR THE WV STATE PLANE COORDINATE SYSTEM SOUTH ZONE NAD '27.
2. TIES TO REFERENCES ARE BASED ON MAGNETIC NORTH 01/10/08.
3. ADVERSE MINERAL TRACT AND INTERIOR SURFACE BOUNDARIES TAKEN FROM POCAHONTAS LAND CORP. PROPERTY MAP MINGO-LOGAN SHEET 5 AND DEED BOOK 138 PAGE 409.
4. SURFACE OWNER AND ADJOINER INFORMATION TAKEN FROM THE ASSESSOR AND COUNTY CLERK RECORDS OF MINGO COUNTY IN JULY, 2007.
5. WELL LAT./LONG. (NAD'27) ESTABLISHED BY DGPS(SUBMETER MAPPING GRADE).

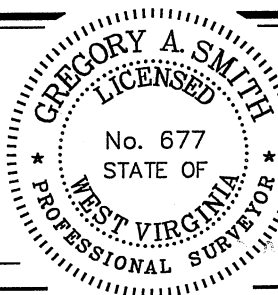
REFERENCES



I THE UNDERSIGNED, HEREBY CERTIFY THAT THIS PLAT IS CORRECT TO THE BEST OF MY KNOWLEDGE AND BELIEF AND SHOWS ALL THE INFORMATION REQUIRED BY LAW AND THE REGULATIONS ISSUED AND PRESCRIBED BY THE DIVISION OF ENVIRONMENTAL PROTECTION.

P.S. 677

Gregory A. Smith



(+) DENOTES LOCATION OF WELL ON UNITED STATES TOPOGRAPHIC MAPS.
 DATE JANUARY 15, 20 08
 OPERATORS WELL NO. WV 506360
 API WELL NO. 47-059-01907H
 STATE WEST VIRGINIA COUNTY MAJESTIC PERMIT 717459

MINIMUM DEGREE OF ACCURACY 1/2500 FILE NO. 4672P506360M2 (253-14)
 PROVEN SOURCE OF ELEVATION DGPS (SUBMETER MAPPING GRADE) SCALE 1" = 500'

STATE OF WEST VIRGINIA
 DIVISION OF ENVIRONMENTAL PROTECTION
 OFFICE OF OIL AND GAS



WELL TYPE: OIL GAS LIQUID INJECTION WASTE DISPOSAL IF "GAS" PRODUCTION STORAGE DEEP SHALLOW

LOCATION: ELEVATION 1,208' WATERSHED MATE CREEK
 DISTRICT MAGNOLIA COUNTY MINGO QUADRANGLE MAJESTIC 7.5'

SURFACE OWNER POCAHONTAS LAND CORPORATION ACREAGE 662.8±
 ROYALTY OWNER PENN VIRGINIA OIL & GAS LEASE ACREAGE 38,753.36±
 PROPOSED WORK: LEASE NO. 717459

DRILL CONVERT DRILL DEEPER REDRILL FRACTURE OR STIMULATE PLUG OFF OLD FORMATION
 PERFORATE NEW FORMATION PLUG AND ABANDON CLEAN OUT AND REPLUG OTHER

PHYSICAL CHANGE IN WELL (SPECIFY) _____ TARGET FORMATION DEVONIAN SHALE
 ESTIMATED DEPTH 5,220' (TOTAL VERTICAL DEPTH)

WELL OPERATOR EQUITABLE PRODUCTION COMPANY DESIGNATED AGENT L. TODD TETRICK
 ADDRESS 1710 PENNSYLVANIA AVENUE ADDRESS 1710 PENNSYLVANIA AVENUE
CHARLESTON, WV 25302 CHARLESTON, WV 25302