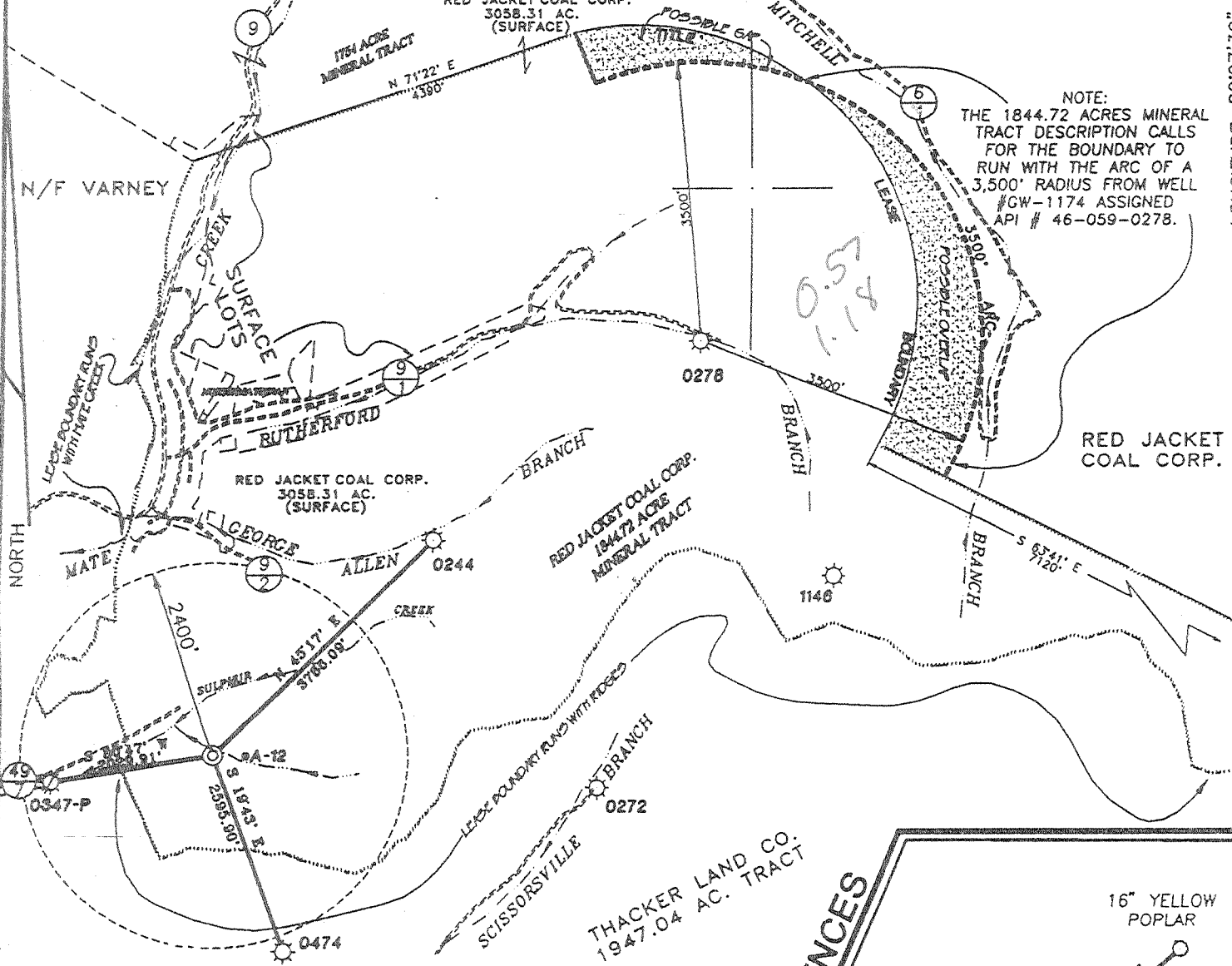


RED JACKET COAL CORPORATION LEASE

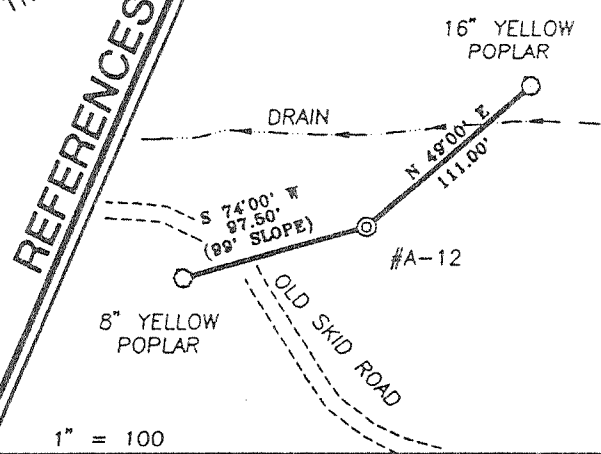


NOTE:
THE 1844.72 ACRES MINERAL TRACT DESCRIPTION CALLS FOR THE BOUNDARY TO RUN WITH THE ARC OF A 3,500' RADIUS FROM WELL #GW-1174 ASSIGNED API # 46-059-0278.

**1844.72 ACRES± OF
4982.72 ACRES±
WELL NO. A-12**

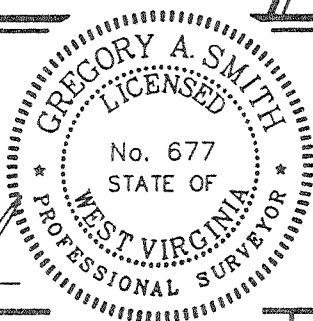
NOTES:
1. TIES TO WELLS ARE BASED ON GRID NORTH WV SOUTH ZONE NAD '27.
2. TIES TO REFERENCES ARE BASED ON MAGNETIC NORTH 4-1-98.

REFERENCES



I THE UNDERSIGNED, HEREBY CERTIFY THAT THIS PLAT IS CORRECT TO THE BEST OF MY KNOWLEDGE AND BELIEF AND SHOWS ALL THE INFORMATION REQUIRED BY LAW AND THE REGULATIONS ISSUED AND PRESCRIBED BY THE DEPARTMENT OF ENERGY.

P.S. 677 Gregory A. Smith



(+) DENOTES LOCATION OF WELL ON UNITED STATES TOPOGRAPHIC MAPS.
DATE APRIL 29, 19 98
OPERATORS WELL NO. RED JACKET A-12
API WELL NO. 47-059-01278
STATE COUNTY PERMIT

MINIMUM DEGREE OF ACCURACY 1 / 2500 FILE NO. 3915PA12 (35-14)
PROVEN SOURCE OF ELEVATION JUNCTION OF ROADS ELEVATION 721' SCALE 1" = 2000'

STATE OF WEST VIRGINIA
DIVISION OF ENVIRONMENTAL PROTECTION
OFFICE OF OIL AND GAS



WELL TYPE : OIL GAS LIQUID INJECTION WASTE DISPOSAL IF "GAS" PRODUCTION STORAGE DEEP SHALLOW

LOCATION :
ELEVATION 988' WATERSHED TRIBUTARY OF SULPHUR CREEK
DISTRICT MAGNOLIA COUNTY MINGO QUADRANGLE MATEWAN 7.5'

SURFACE OWNER RED JACKET COAL CORP. C/O GEORGIA - PACIFIC CORP. ACREAGE 1844.72 OF 3058.31
ROYALTY OWNER RED JACKET COAL CORP. C/O GEORGIA - PACIFIC CORP. LEASE ACREAGE 1844.72 OF 4982.72

PROPOSED WORK :
DRILL CONVERT DRILL DEEPER REDRILL FRACTURE OR STIMULATE PLUG OFF OLD FORMATION PERFORATE NEW FORMATION PLUG AND ABANDON CLEAN OUT AND REPLUG OTHER

PHYSICAL CHANGE IN WELL (SPECIFY) _____ TARGET FORMATION DEVONIAN SHALE
ESTIMATED DEPTH 4900'

WELL OPERATOR BLAZER ENERGY CORPORATION DESIGNATED AGENT ROBERT ALLEY
ADDRESS P.O. BOX 2347 CHARLESTON, WV 25328 ADDRESS P.O. BOX 2347 CHARLESTON, WV 25328
DEEP WELL 66 265

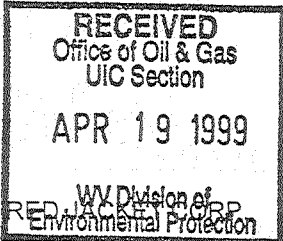
MINGO COUNTY NAME PERMIT 1278

WR-35

7-Aug-98

API # 47-

059-01278



State of West Virginia
 Division of Environmental Protection
 Section of Oil and Gas

Reviewed AS

Well Operator's Report of Well Work

Farm Name: RED JACKET CORP

Operator Well No.: RED JACKET A-12

LOCATION: Elevation: 988.00

Quadrangle: MATEWAN

District: MAGNOLIA

County: MINGO

Latitude: 3040

Feet South of

37 DEG 37 MIN 30 SEC

Longitude: 6210

Feet West of

82 DEG 7 MIN 30 SEC

Company: BLAZER ENERGY CORPORATION
P.O. BOX 2347
CHARLESTON, WV 25328

Casing & Tubing Size	Used in Drilling	Left in Well	Cement Fill Up Cu. Ft.
13-3/8"	34'	34'	GRTD
9-5/8"	617'	617'	271 FT ³
7"	2225'	2225'	436 FT ³
4-1/2"	4725'	4725'	409 FT ³

Agent: Richard Smeltzer

Inspector: OFIE HELMICK

Permit Issued: 8/7/98

Well work commenced: 8/28/98

Well work completed: 9/25/98

Verbal Plugging

Permission granted on:

Rotary Rig X Cable Rig _____

Total Depth 4748' feet _____

Fresh water depths (ft) 80' _____

Salt water depths (ft) 960', 1558' _____

Is coal being mined in area? _____

Coal Depths (ft): 37' _____

OPEN FLOW DATA L. SHALE, U. SHALE, BEREA/CHAGRIN/U. HURON,

Producing formation BIG LIME/INJUN

Pay Zone Depth (ft): _____

Gas: Initial open flow 146 MCF/d Oil: Initial open flow _____ Bbl/d

Final open flow: 936 MCF/d Final open flow: _____

Time of open flow between initial and final tests _____ Hours

Static rock pressure 100 psig (surface pressure) after _____ Hours

Second producing formation _____

Pay Zone Depth (ft): _____

Gas: Initial open flow _____ MCF/d Oil: Initial open flow _____ Bbl/d

Final open flow: _____ MCF/d Final open flow: _____

Time of open flow between initial and final tests _____ Hours

Static rock pressure _____ psig (surface pressure) after _____ Hours

NOTE: ON BACK OF THIS FORM PUT THE FOLLOWING: 1) DETAILS OF PERFORATED INTERVALS, FRACTURING OR STIMULATING, PHYSICAL CHANGE, ETC. 2) THE WELL LOG WHICH IS A SYSTEMATIC DETAILED GEOLOGICAL RECORD OF ALL FORMATIONS, INCLUDING COAL ENCOUNTERED BY THE WELLBORE.

For: BLAZER ENERGY CORPORATION

By: _____

Date: _____

MAY 3 1999

MINGO 1278

EASTERN STATES OIL & GAS, INC.
 WR-35 COMPLETION REPORT - Attachment
 Well Treatment Summary

RECEIVED
 Office of Oil & Gas
 UIC Section
 APR 19 1999
 WV Division of
 Environmental Protection

Well: RED JACKET A-12

API: 47-059-01278

Date	9/23/98	9/23/98	9/23/98	9/23/98		
	1 st Stage	2 nd Stage	3 rd Stage	4 th Stage	5 th Stage	6 th Stage
Type Frac:				ACID w/N ²		
Acid, N ₂ , Foam, Water	N ²	N ²	N ²	FLUSH		
Zone Treated	L. SHALE	U. SHALE	BEREA/ CHAGRIN/U. HURON	BIG LIME/ INJUN		
# Perfs	20	40	39	37		
From - To:	4571-4703	3865-4280	3103-3512	2305-2468		
BD Pressure @ psi	3220	2433	2067	315		
ATP psi	2811	2247	2025	512		
Avg. Rate, B=B/M, S= SCF/M	43,393 S	49,475 S	47,561 S	51 B/9538 S		
Max. Treat Press psi	3610	2433	2263	1420		
ISIP psi	2524	1369	1349	59		
Frac Gradient	.65	.39	.47	.49		
10 min S-I Pressure	1829	1249	1091	983		
Material Volume:						
Sand-sks						
Water-bbl			12			
SCF N ₂	510,000	900,000	525,000	42,000		
Acid-gal		500 7-1/2%	500 7-1/2%	2600 15%		
NOTES:						

Formation Record

TOP	BOTTOM	FORMATION	Remarks
0	30	FILL	
30	377	SAND SHALE	HOLE DAMP @ 80'
377		COAL	
383	674	SAND SHALE	
674	1568	SALT SAND	HOLE DAMP @ 960' 1" STREAM WATER 1558' GT @ 757',1651,2093-NS
1725		U MAXTON	
2122	2142	L MAXTON	
2170	2230	L LIME	
2230	2446	BIG LIME	GT @ 2344 133 MCFD, 2389'-NS, 2516-133 MCFD
2541	2757	WEIR	GT @ 2527, 2893 119 MCFD
3089	3115	SUNBURY	GT @ 3115, 3212, 3337 - 133 MCFD
3115	3167	BEREA	
3167	4036	UPPER HURON	
3297		GORDON	GT @ 3996, 4564, 4748 - 145 mcfD
4036	4282	LOWER HURON	
4282	4400	JAVA	
4400	4581	ANGOLA	
4581	4730	RHINESTREET	
4730		ONONDAGA	
4748		TD	