



West Virginia Department of Environmental Protection
Office of Oil and Gas
WELL LOCATION FORM: GPS

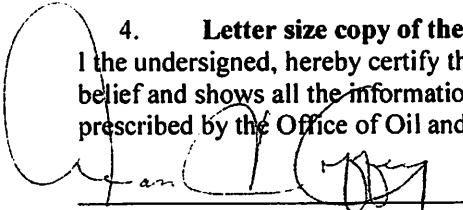
API: 47-059-1055 WELL NO.: C-59
FARM NAME: Heartwood Forestland Tract 390
RESPONSIBLE PARTY NAME: Consol Of Kentucky Inc.
COUNTY: Mingo DISTRICT: Hardee
QUADRANGLE: Myrtle
SURFACE OWNER: Heartwood Forestland Fund II
ROYALTY OWNER: New River Energy Corp.
UTM GPS NORTHING: 4185412.130
UTM GPS EASTING: 397918.127 GPS ELEVATION: 519.261

The Responsible Party named above has chosen to submit GPS coordinates in lieu of preparing a new well location plat for a plugging permit or assigned API number on the above well. The Office of Oil and Gas will not accept GPS coordinates that do not meet the following requirements:

1. Datum: NAD 1983, Zone: 17 North, Coordinate Units: meters, Altitude: height above mean sea level (MSL) – meters.
2. Accuracy to Datum – 3.05 meters
3. Data Collection Method:
Survey grade GPS : Post Processed Differential
Real-Time Differential
Mapping Grade GPS : Post Processed Differential
Real-Time Differential

4. **Letter size copy of the topography map showing the well location.**

I the undersigned, hereby certify this data is correct to the best of my knowledge and belief and shows all the information required by law and the regulations issued and prescribed by the Office of Oil and Gas.

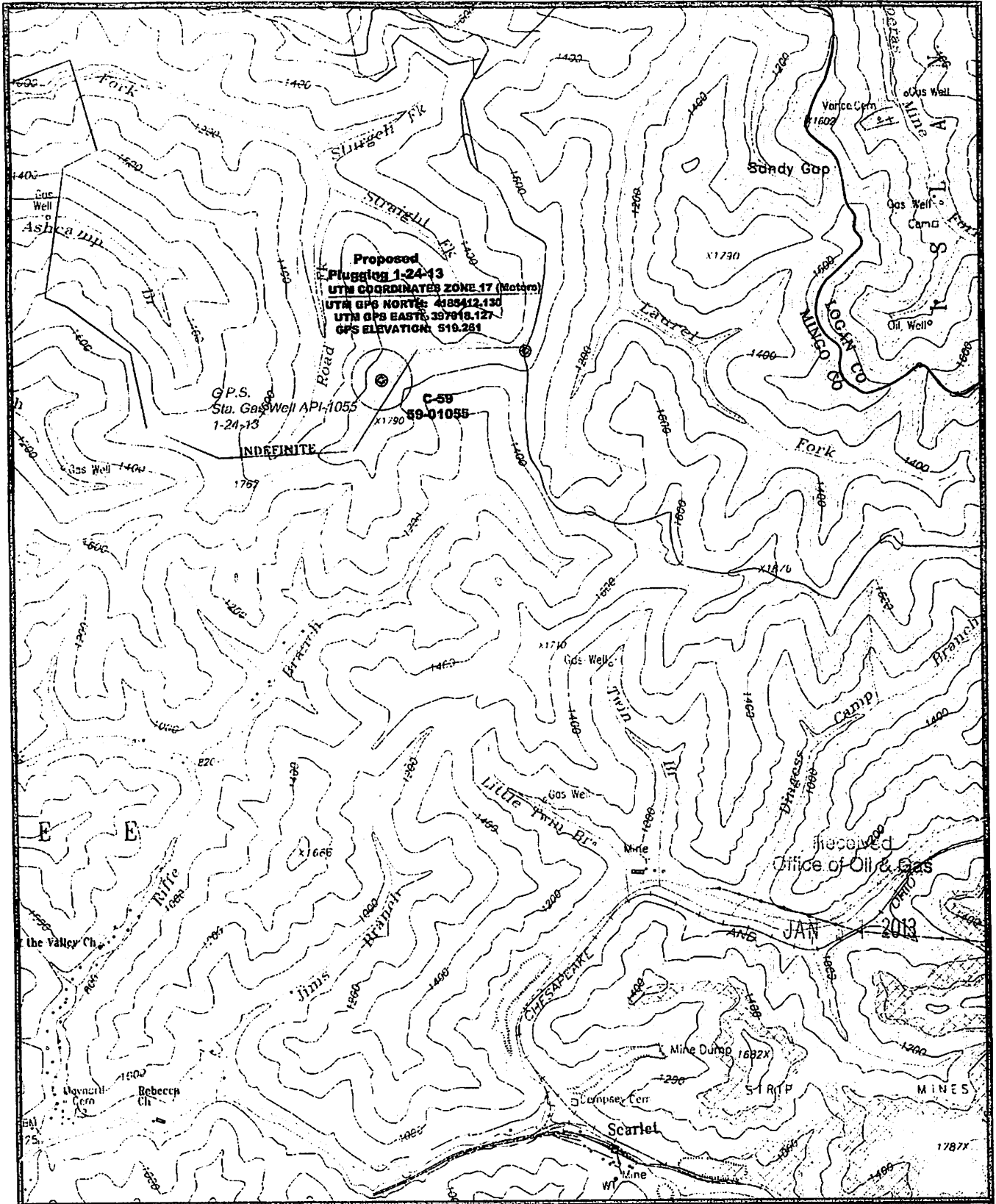

Signature

PLS 869su

Title

1-24-2013

Date



**Proposed
Gas Well Plugging 1-24-13**
 UTM COORDINATES ZONE 17 (Meters)
 UTM GPS NORTH: 4188412.130
 UTM GPS EAST: 397913.127
 GPS ELEVATION: 519.281

G.P.S.
 Sta. Gas Well API-1055
 1-24-13

C-59
 59-01055

INDEFINITE

Received
 Office of Oil & Gas

JAN 1 2013

Proposed Gas Well Plugging
 Well No. 47-059-1055

GENERAL LOCATION MAP
 MYRTLE QUADRANGLE
 SCALE 1" = 2000' FEET
 24 January 2013

Prepared By:
Tug Valley Surveying, Inc.
 P.O. BOX 862
 Williamson, W. V. 25661

