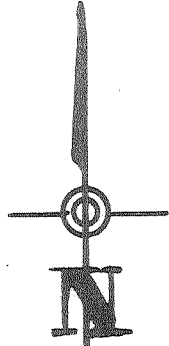


Latitude 37° 55'

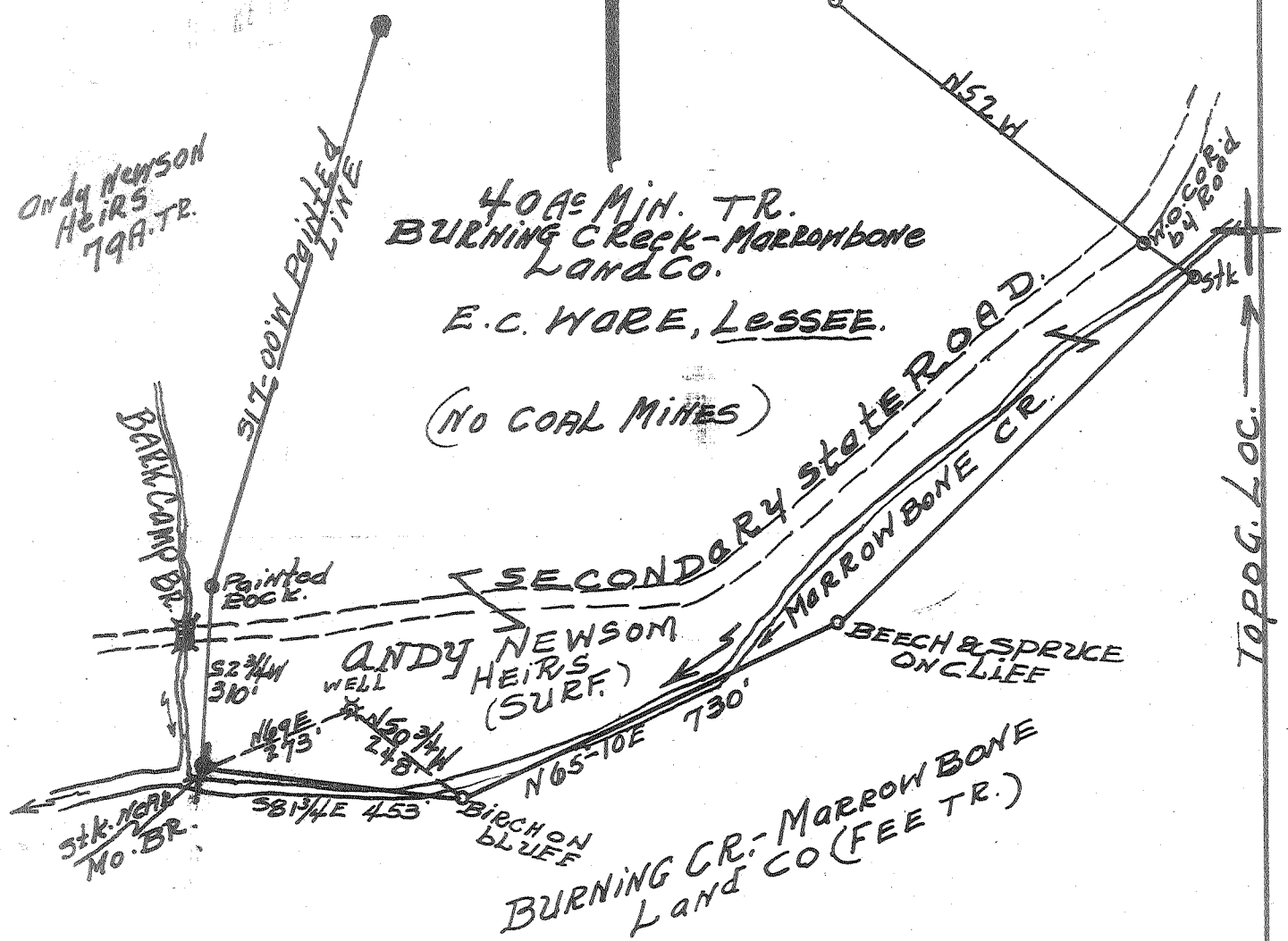
Longitude 82° 20'



Andy Newson Heirs 79A.T.R.

40 AC. MIN. TR.  
BURNING CREEK-MARRROWBONE  
LAND CO.  
E.C. WARE, LESSEE.

(NO COAL MINES)



New Location   
Drill Deeper   
Abandonment

4.84 S.  
0.13 W.  
5 SE (L-2)

Company E.C. WARE  
 Address BEAUFORT, Ky.  
 Farm ANDY NEWSOM HEIRS (SURF.)  
NEWSOM'S  
 Tract 40 A.T.R. Acres 40 Lease No. 1  
 Well (Farm) No. 1 Serial No. \_\_\_\_\_  
 Elevation (Spirit Level) 687.00  
 Quadrangle NAUGATUCK, Ky. - W. Va.  
 County MINGO District HERMIT  
 Engineer Rufus M. Reed  
 Engineer's Registration No. 1826  
 File No. 10-A Drawing No. 1012  
 Date 1-26-1960 Scale 1" = 300 FT.

STATE OF WEST VIRGINIA  
DEPARTMENT OF MINES  
OIL AND GAS DIVISION  
CHARLESTON

WELL LOCATION MAP  
FILE NO. 741N-662 D

+ Denotes location of well on United States Topographic Maps, scale 1 to 62,500, latitude and longitude lines being represented by border lines as shown.

- Denotes one inch spaces on border line of original tracing.

No Samples

Deep Well



STATE OF WEST VIRGINIA  
DEPARTMENT OF MINES  
OIL AND GAS DIVISION 10

Quadrangle Naugatuck, Ky. N. Va.  
Permit No. MIN-662-D

WELL RECORD

Oil or Gas Well dry

(KIND)

Company E. C. Ware  
Address Beauty, Kentucky  
Farm Andy Newsom Acres 40  
Location (waters) Marrowbone Creek  
Well No. 1 Elev. 687'  
District Kermit County Mingo  
The surface of tract is owned in fee by Burning Cr.M.L.Co.  
c/o T. R. Joseph Address Williamson, W. Va.  
Mineral rights are owned by \_\_\_\_\_  
Address \_\_\_\_\_  
Drilling commenced Feb. 15, 1960  
Drilling completed Mar. 17, 1960  
Date Shot 3-22-60 From \_\_\_\_\_ To \_\_\_\_\_  
With 5866 Lbs. H. V. Gelatin  
Open Flow /10ths Water in \_\_\_\_\_ Inch  
/10ths Merc. in \_\_\_\_\_ Inch  
Volume \_\_\_\_\_ Cu. Ft.  
Rock Pressure \_\_\_\_\_ lbs. \_\_\_\_\_ hrs.  
Oil \_\_\_\_\_ bbls., 1st 24 hrs.  
WELL ACIDIZED \_\_\_\_\_  
WELL FRACTURED \_\_\_\_\_

Casing and Tubing	Used in Drilling	Left in Well	Packers
Size			Kind of Packer _____
16			
13			Size of _____
10			
8 1/4			Depth set _____
6 3/8		1545	
5 3/16			Perf. top _____
3			Perf. bottom _____
2			Perf. top _____
Liners Used			Perf. bottom _____

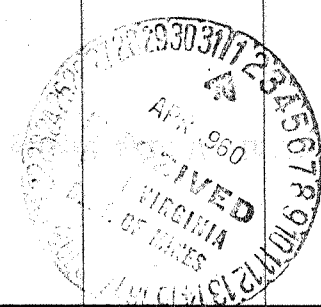
CASING CEMENTED \_\_\_\_\_ SIZE \_\_\_\_\_ No. Ft. \_\_\_\_\_ Date \_\_\_\_\_  
COAL WAS ENCOUNTERED AT \_\_\_\_\_ FEET \_\_\_\_\_ INCHES  
\_\_\_\_\_ FEET \_\_\_\_\_ INCHES FEET \_\_\_\_\_ INCHES  
\_\_\_\_\_ FEET \_\_\_\_\_ INCHES FEET \_\_\_\_\_ INCHES

RESULT AFTER TREATMENT \_\_\_\_\_

ROCK PRESSURE AFTER TREATMENT \_\_\_\_\_

Fresh Water \_\_\_\_\_ Feet Salt Water \_\_\_\_\_ Feet

Formation	Color	Hard or Soft	Top	Bottom	Oil, Gas or Water	Depth	Remarks
Surface			0	25			
Sand			25	47			
Slate			47	72			
Sand			72	127			
Coal			127	131			
Slate			131	145			
Sand			145	157			
Coal			157	160			
Slate			160	227			
Sand			227	302			
Slate			302	352			
Sand			352	377			
Slate			377	397			
Sand			397	437			
Slate			437	487			
Lime Shells			487	490			
Sand			490	537			
Slate			537	562			
Sand			562	622			
<del>Sand</del> Slate & Shells			622	642			
Salt Sand			642	1102			
Slate & Shells			1102	1147			
Sand			1147	1332			
Slate			1332	1342			
Red Rock			1342	1351			
Slate & Shells			1351	1357			
Maxon Sand			1357	1447			
Slate & Shells			1447	1459			
Red Rock			1459	1463			



(over)

Formation	Color	Hard or Soft	Top 10	Bottom	Oil, Gas or Water	Depth Found	Remarks
Slate & Shells			1463	1497			
Little Lime			1497	1532			
Pencil Cave			1532	1535			
Big Lime			1535	1737			
Injun Sand			1737	1777			
Slate & Shells			1777	1990			Gas gauged 4/10 W. in 1" at 1880'
Weir Shells			1990	2060			
Slate			2060	2250			
Coffee Shale			2250	2272			
Berea Grit			2272	2348	2272		
Brown Shale			2348	2425	687		
Gray Shale			2425	2725	1585		
Brown Shale			2725	2815			
Gray Shale			2815	2950			
Brown Shale			2950	3242			
White Slate			3242	3460			
Light Brown Shale			3460	3500			
Dark Brown Shale			3500	3594			
Corniferous Lime			3594	3596 T.D.			Gas gauged 4/10 W. in 1" at 3596'
			(46)		1716 D.D. footage		
<p>Note:</p> <p>This was drilled to a depth of 1880 feet and produced from the Big Lime formation for years.</p> <p>E. C. Ware drilled the well from 1880' to 3596'. The log from top to 1880 was arrived at by using the log from well number 5831, which is approximately 1500 feet from this well, and figured from the difference in elevation.</p> <p style="text-align: right;">E.C.Ware</p> <div style="text-align: right; margin-top: 20px;"> <math display="block">\begin{array}{r} 3594 \\ 687 \\ \hline 2907 \end{array}</math> </div>							

Date March 29, 19 60

APPROVED E. C. Ware, Owner

By E. C. Ware  
(Title)