

LATITUDE 37° 45' 00"



82° 15' 00"

LONGITUDE

7'5 OGIS topo location

7.5' loc 0.145  
0.91W

15' loc 0.145  
(calc.) 0.91W

Company \_\_\_\_\_

Farm \_\_\_\_\_

Quad WILLIAMSON 7 1/2' x 15' NE

County MINGO

District HARDEE

WELL LOCATION MAP

File No. 059-0127

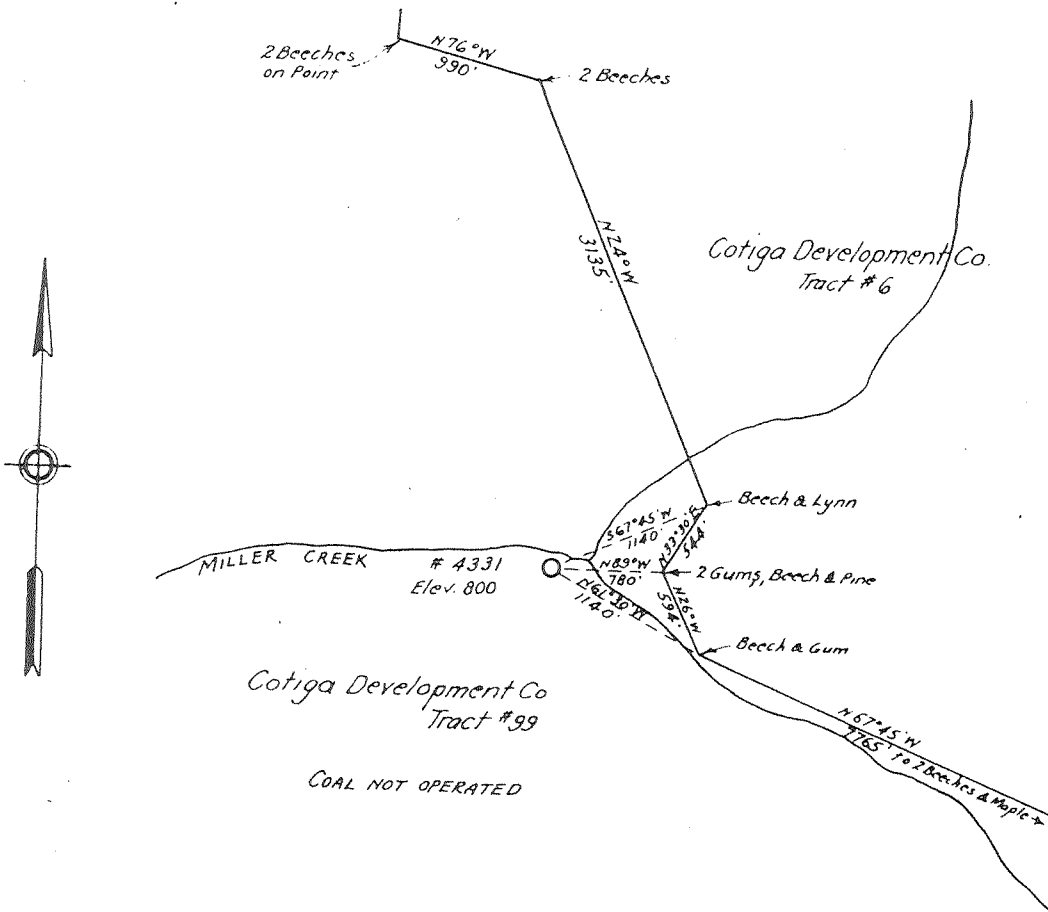
plugged 06/28/32

I, the undersigned hereby certify that this map is true and correct, and shows all the information required by Oil & Gas Law, Title 19, 1929.

*E. A. Cunningham*  
Notary Public

Acknowledged before me a \_\_\_\_\_ of  
Kanawha County, W. Va. this \_\_\_\_\_ day of \_\_\_\_\_ 19\_\_\_\_

My Commission expires \_\_\_\_\_  
Notary Public



Cotiga Development Co.  
Well No. 4331  
Hardee District  
Mingo County W. Va.  
April 8, 1931

*Mingo - 27*

UNITED FUEL GAS CO.  
MAP SHOWING  
PROPOSED WELL LOCATION  
SCALE:- 4 INCHES = 1 MILE

## Cotiga Development Company No. 5 (4331) Well.

Hardee District, Mingo County, W. Va.

By United Fuel Gas Company.

Permit No. Min-27.

Elevation, 800' B.

Dry hole.

Located 0.22 mi. S. of 37° 45' and 1.14 mi. W. of 82° 15'—NE—Williamson Quadrangle.

On south side of Miller Creek (4092' N. E. of mouth of Peg Fork).

3.3 mi. N. E. of Chattaroy; 3.4 mi. N. E. of Nolan.

	Top.	Bottom.	Thickness.	Elevation (top)
Big Lime -----	1810	2005	195	-1010
Big Injun Sand-----	2005	2055	50	-1205
Berea Sand -----	2630	2690	60	-1830
Corniferous Lime -----	4030	4646	(616)	-3230
Oriskany Sand -----			0	
Newburg Sand -----	4587	4590	3±	-3787

Thickness, Devonian Shales, 1340 feet.

Total depth, 4657'.

Remarks: Completed in 1932.

Fresh water at 30'. Salt water, 1155' and 1360'.

Gas show, 2010'. Oil show, (Berea), 2655'.

Gas, (Newburg), 4587-90', (310 M.; exhausted).

Abandoned June 28, 1932.

On 34,436 acres.

Williamson Q-NE

Hardee District, Mingo County, W. Va.

United Fuel Gas Co., Charleston, W. Va.

On 34436 acres, surface and mineral rights owned by Cotiga Development Co., 17th & Chestnut Sts., Provident Trust Co., Philadelphia, Pa.

Drilled under permit Mingo-27, issued April 20, 1931.

Elevation, 800' E.

13" casing, 25'; 10", 305'; 8 $\frac{1}{4}$ ", 1320'; 6-5/8", 1850'; 5-3/16", 4589'.

Coal was encountered at 82-85, 170-172, and 265-267'.

Completion reported to Dept. of Mines April 12, 1932.

Well was not shot.

Fresh water at 50'; salt water at 1155 and 1360'.

	Top.	Bottom.
Surface	0	20
Sand (water at 50')	20	60
Slate	60	82
Coal	82	85
Slate	85	110
Sand	110	155
Slate	155	170
Coal	170	172
Sand	172	210
Slate	210	265
Coal	265	267
Slate	267	290
Sand	290	325
Slate	325	380
Sand	380	520
Slate	520	560
Lime	560	680
Slate	680	740
Sand	740	785
Slate	785	795
Sand	795	825
Slate	825	830
1st Salt Sand	830	1095
Slate	1095	1110
2nd Salt Sand (water at 1155' & 1360')	1110	1650
Red rock	1650	1652
Blue slate	1652	1662
Sand	1662	1683
Slate	1683	1700
Lime	1700	1707
Slate	1707	1720
Sand	1720	1743
Slate	1743	1765
Lime	1765	1796
Slate	1796	1810
Big Lime	1810	2005
Big Injun Sand (gas show, 2010')	2005	2055
Slate	2055	2070
Sand	2070	2130
Slate	2130	2180
Lime	2180	2300
Slate	2300	2610
Brown shale	2610	2630
Berea Sand (oil show, 2655')	2630	2690

(OVER)

	Top.	Bottom.
Slate	2690	- 2705
Brown shale	2705	- 2755
Slate	2755	- 3350
Brown shale	3350	- 3640
Slate	3640	- 3885
Brown shale	3885	- 4030
✓ Corniferous Lime (gas, 4587-4590')	4030	- 4646
Slate	4646	- 4648
Slate and shell, to bottom	4648	- 4657

(50)

Vol. ~~XVI~~ p. 625  
 Newburg 4587-90 TD - 3787  
 0.22 mi S of 37°45' and 1.14 mi. W of 82°15'

Min-27

WEST VIRGINIA DEPARTMENT OF MINES

Oil and Gas Section

PRELIMINARY DATA SHEET NO. 1

File No.....

Well No. 4331

United Fuel Gas

Company, of Charleston, W. Va.

on the Cotigo Dev. Co.

Farm

containing 34436

acres. Location

Hardee

District, in Mingo

County, West Virginia.

The surface of the above tract is owned in fee by Cotigo Dev. Co.

Philadelphia, Pa.

of Provident Trust Co. 17th & Chestnut St. address, and the mineral rights are owned by

Cotigo Dev. Co.

of

The oil and gas privileges are held under lease by the above named company, and this well is drilled under permit No. Mingo-27 issued by the West Virginia Department of Mines, Oil and Gas Section,

April 20,

1931

Elevation of surface at top of well,

800

~~SPM~~

Barometric.

The number of feet of the different sized casings used in the well.

feet

size. Wood conductor

25

feet

13"

size, csg.

305

feet

10

sized csg.

1320

feet

8-1/4"

size, csg.

1850

feet

6-5/8

sized csg.

4589

feet

5-3/16"

size, csg.

feet

sized csg.

packer of

size, set at

packer of

size, set at

in casing perforated at

feet to

feet.

in casing perforated at

feet to

feet.

Coal was encountered at 82

feet; thickness

36

inches, and at 170

feet; thickness 24

inches; and at 265

feet; thickness

24

inches.

Liners were used as follows: (Give details)

April 12, 1932

Date.

Approved. United Fuel Gas Company, Owner.

By

*J. H. Cunningham*

(Title) Engineer.

Min-27

UNITED FUEL GAS ..... Company  
 CHARLESTON, W. VA. .... Address  
 WELL 4331 .....

COMPLETION DATA SHEET  
 NO. 2  
 FORMATION RECORD

Name	Color	Character	Oil, Gas or Water	Top	Bottom	Thickness	Total Depth	Remarks
Surface				0	20	20		
and				20	60	40		
ter			50					
ate				60	82	22		
al				82	85	3		
ate				85	110	25		
nd				110	155	45		
ate				155	170	15		
al				170	172	2		
nd				172	210	38		
ate				210	265	55		
al				265	267	2		
ate				267	290	23		
nd				290	325	35		
ate				325	380	55		
nd				380	520	140		
ate				520	560	40		
me				560	680	120		
ate				680	740	60		
nd				740	785	45		
ate				785	795	10		
nd				795	825	30		
ate				825	830	5		
st Salt Sand				830	1095	265		
ate				1095	1110	15		
nd Salt Sand				1110	1650	540		
ater			1155					
ed Rock				1650	1652	2		
ater			1360					
blue Slate				1652	1662	10		
and				1662	1683	21		
late				1683	1700	17		
ime				1700	1707	7		
late				1707	1720	13		
and				1720	1743	23		
late				1743	1765	22		
ime				1765	1796	31		
late				1796	1810	14		
ig Lime				1810	2005	195		
njun Sand				2005	2055	50		
as Show			2010					
late				2055	2070	15		
and				2070	2130	60		
late				2130	2180	50		
ime				2180	2300	120		

Continued Sheet #2

shot  
 Well was not shot at .....feet; well was shot at .....feet.

Salt salt  
 Fresh water at .....feet; fresh water at .....feet.

producing  
 Well was hole.  
 dry

..... Date Approved ..... Owner

NOTE: All bottom formations must be noted as indicated above and all key-rocks and oil and gas sands must be recorded under their proper geological names in the district as well as any local names commonly used in the district for such strata.

Min. 27

Sheet #2

UNITED FUEL GAS ..... Company  
CHARLESTON, W. VA. .... Address  
WELL 4331 .....

COMPLETION DATA SHEET  
NO. 2  
FORMATION RECORD

Name	Color	Character	Oil, Gas or Water	Top	Bottom	Thickness	Total Depth	Remarks
late				2300	2610	310		
rown Shale				2610	2630	20		
and (Berea)				2630	2690	60		
ill Show			2655					
late				2690	2705	15		
rown Shale				2705	2755	50		
late				2755	3350	595		
rown Shale				3350	3640	290		
late				3640	3885	245		
rown Shale				3885	4030	145		
orniferous Lime		"n6g"	4587-4590	4030	4646	616		
as				4646	4648	2		
late				4648	4657	9	4657	
late & Shell								

~~strat~~ Well was not shot at ..... feet; well was shot at ..... feet.

~~strat~~ Fresh water at 50 ..... feet; ~~rock~~ salt water at 1155 and 1360 ..... feet.

Well was producing hole.  
dry

April 12, 1932 ..... Date  
Approved United Fuel Gas Company. .... Owner

NOTE: All bottom formations must be noted as indicated above and all key-rocks and oil and gas sands must be recorded under their proper geological names in the district as well as any local names commonly used in the district for such strata.

Plugged 6-28-32