

WW-7
8-30-06



West Virginia Department of Environmental Protection
Office of Oil and Gas

WELL LOCATION FORM: GPS

API: 47-055-00137 WELL NO.: 11199

FARM NAME: Hawley Coal Mining Corp.

RESPONSIBLE PARTY NAME: CNX Gas Co. LLC

COUNTY: Mercer DISTRICT: Jumping Branch

QUADRANGLE: Odd, WV

SURFACE OWNER: WVDNR - WV State Parks

ROYALTY OWNER: Liquid. Trustees Blue Jay Lumber

UTM GPS NORTHING: 4,151,749 m

UTM GPS EASTING: 485,173 m GPS ELEVATION: 740 m *2427.20 FT*

The Responsible Party named above has chosen to submit GPS coordinates in lieu of preparing a new well location plat for a plugging permit or assigned API number on the above well. The Office of Oil and Gas will not accept GPS coordinates that do not meet the following requirements:

1. Datum: NAD 1983, Zone: 17 North, Coordinate Units: meters, Altitude: height above mean sea level (MSL) – meters.
2. Accuracy to Datum – 3.05 meters
3. Data Collection Method:

Survey grade GPS X : Post Processed Differential X
Real-Time Differential _____

Mapping Grade GPS _____ : Post Processed Differential _____
Real-Time Differential _____

Received

MAR 24 2014

Office of Oil and Gas
WV Dept. of Environmental Protection

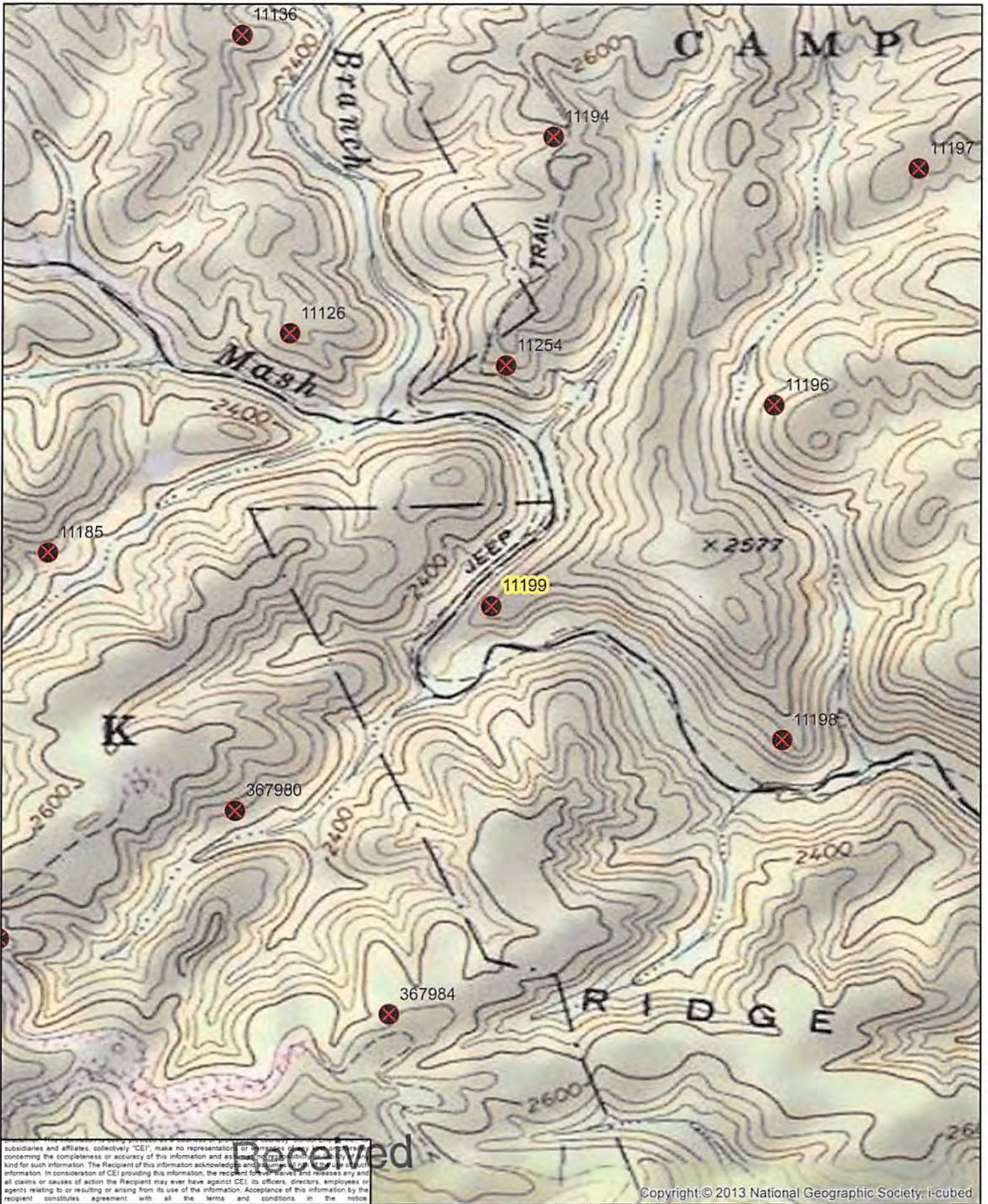
4. Letter size copy of the topography map showing the well location.

I the undersigned, hereby certify this data is correct to the best of my knowledge and belief and shows all the information required by law and the regulations issued and prescribed by the Office of Oil and Gas.

[Signature]
Signature

Production Coord.
Title

3-20-14
Date



subsidaries and affiliates, collectively "CEI", make no representations or warranties of any kind concerning the completeness or accuracy of this information and assumes no responsibility for any kind for such information. The Recipient of this information acknowledges and assumes the risk of using this information. In consideration of CEI providing this information, the recipient hereby releases any and all claims or causes of action the Recipient may ever have against CEI, its officers, directors, employees or agents relating to or resulting or arising from its use of the information. Acceptance of this information by the recipient constitutes agreement with all the terms and conditions in the notice

Copyright: © 2013 National Geographic Society, i-cubed

FEB 10 2014
JKK
 Office of Oil and Gas
 (Development) Section

0 500 1,000 Feet	
Date: 1/24/2014	Prepared By: KK
Revisions:	Approved By: BS
This map is property of CONSOL Energy Inc. and contains information that is proprietary and confidential in nature and may not be copied or reproduced without prior written consent.	

CONSOL ENERGY
 PROPOSED PLUGGING
 WELL NUMBER 11199
 API# 47-055-00137
 GENERAL LOCATION MAP