

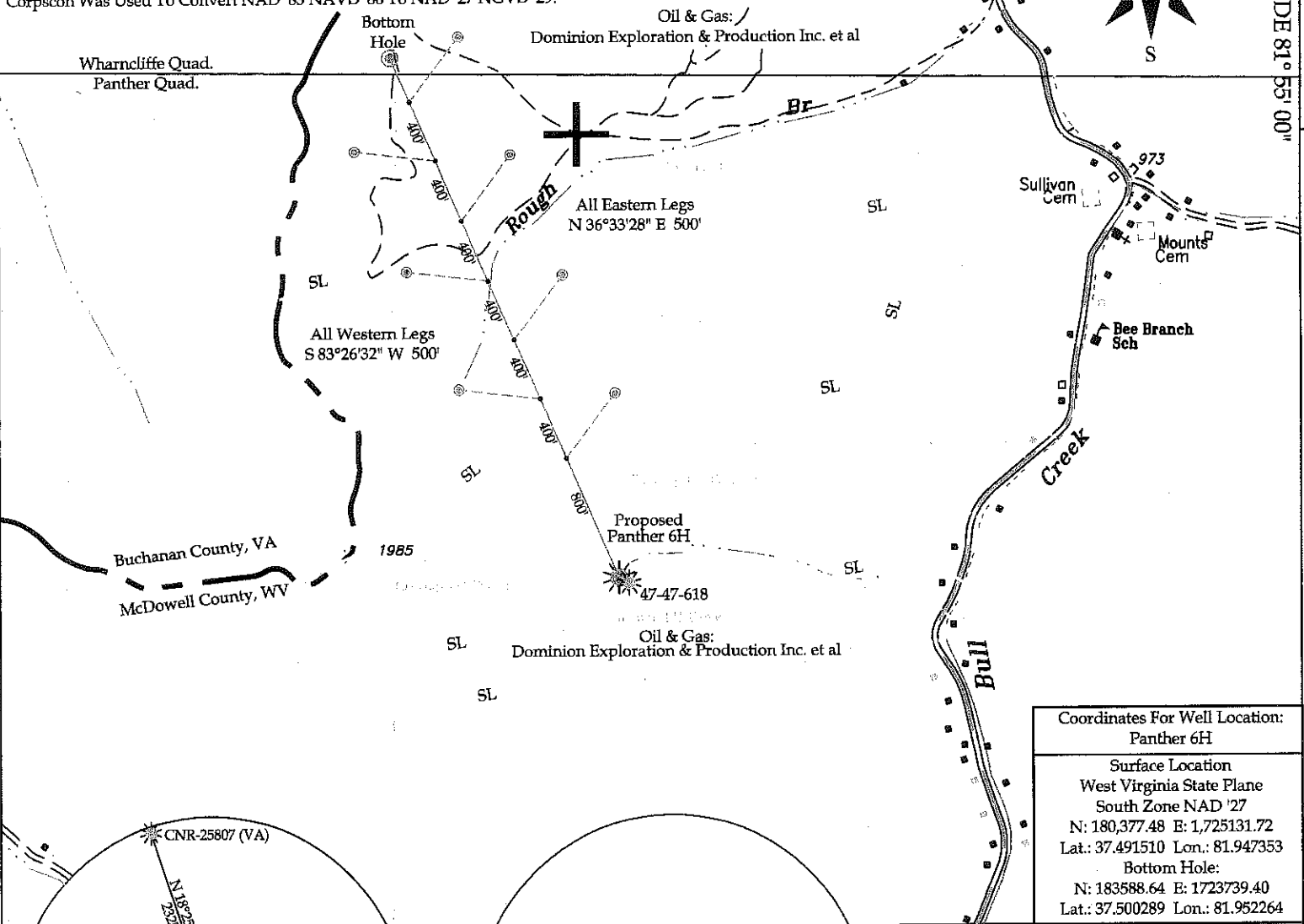
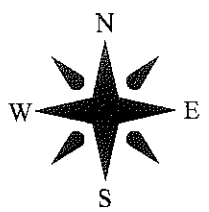
Well Coordinates are based on the West Virginia State Plane Coordinate System NAD '27/NGVD '29 as Calculated From Either NGS/USGS Published control Point or by NGS/NOAA Opus Static Solution. Closed Loop Traverse & Trigonometric Leveling Were Used To Determine Actual Staked Location. Scale Factor/Combined Factor Was Not Applied. Corpcscn Was Used To Convert NAD '83 NAVD '88 To NAD '27 NGVD '29.

8,902'

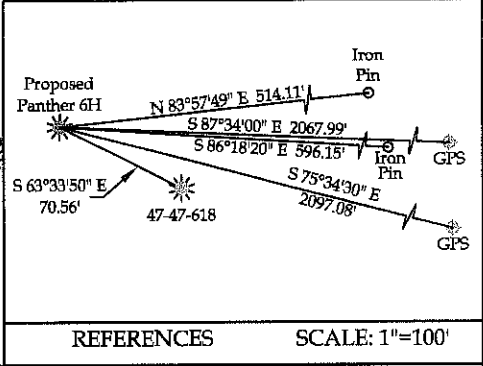
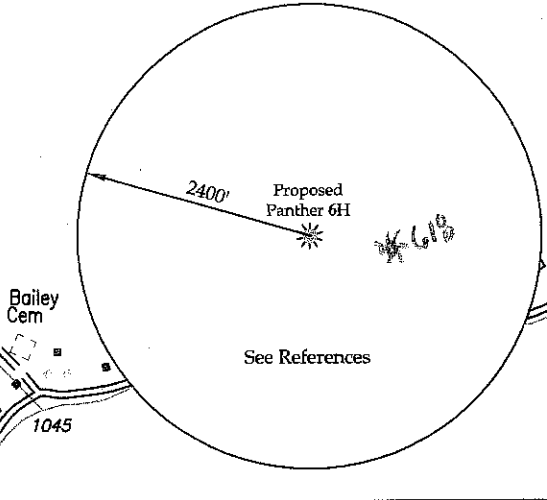
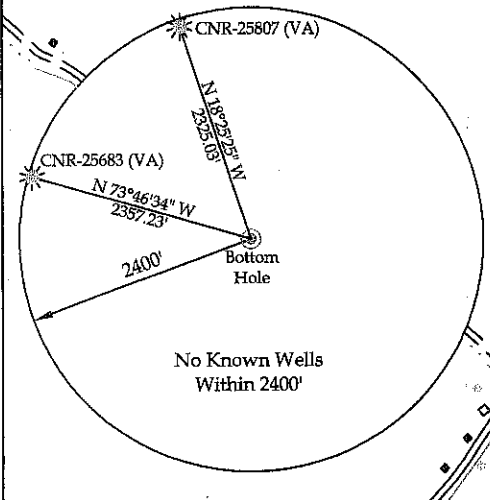
LATITUDE 37° 30' 00"

LONGITUDE 81° 55' 00"

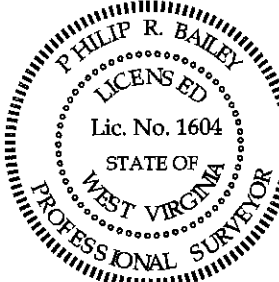
Wharncliffe Quad.
Panther Quad.



Coordinates For Well Location:
Panther 6H
Surface Location
West Virginia State Plane
South Zone NAD '27
N: 180,377.48 E: 1,725,131.72
Lat.: 37.491510 Lon.: 81.947353
Bottom Hole:
N: 183,588.64 E: 1,723,739.40
Lat.: 37.500289 Lon.: 81.952264



I THE UNDERSIGNED, HEREBY CERTIFY THAT THIS PLAT IS CORRECT TO THE BEST OF MY KNOWLEDGE AND BELIEF AND SHOWS ALL THE INFORMATION REQUIRED BY LAW AND THE REGULATIONS ISSUED AND PRESCRIBED BY THE DIVISION OF ENVIRONMENTAL PROTECTION.
(SIGNED) Philip Bailey
R.P.E. _____ R.P.S. X



⊕ DENOTES LOCATION OF WELL ON UNITED STATES TOPO MAPS
DATE November 12, 20 09
OPERATOR'S WELL NO. Panther 6H
API WELL No. 47 - 47 - 027634
STATE COUNTY PERMIT
CANCELLED

MINIMUM DEGREE OF ACCURACY 1:45,207
PROVEN SOURCE OF ELEVATION TRIG. LEVELING FROM KNOWN GPS ELEVATION
FILE NO. 6008-09
SCALE: 1" = 1000'
DRAWING NO. 6H-PLAT.dwg

STATE OF WEST VIRGINIA
DIVISION OF ENVIRONMENTAL PROTECTION
OFFICE OF OIL AND GAS



WELL TYPE: OIL GAS X LIQUID INJECTION WASTE DISPOSAL
(IF "GAS") PRODUCTION STORAGE X DEEP SHALLOW
LOCATION: ELEVATION 1362.36 WATER SHED Bull Creek
DISTRICT Sandy River COUNTY McDowell
QUADRANGLE Panther
SURFACE OWNER Emzy Allen, et al ACREAGE 50 Acres
OIL & GAS ROYALTY OWNER Dominion Exploration & Production Inc. et al LEASE ACREAGE 6067.86 Acres
LEASE NO. _____
PROPOSED WORK: DRILL X CONVERT DRILL DEEPER REDRILL FRACTURE OR STIMULATE PLUG OFF OLD FORMATION PERFORATE NEW FORMATION OTHER PHYSICAL CHANGE IN WELL (SPECIFY) _____
PLUG AND ABANDON CLEAN OUT AND REPLUG
TARGET FORMATION Lower Huron ESTIMATED DEPTH 5,167' TVD 8,345' MD
WELL OPERATOR TRIANA ENERGY, L.L.C. DESIGNATED AGENT Ray Prudnick, Jr.
ADDRESS 900 Virginia Street East, Suite 400 Charleston, WV 25301 ADDRESS: 500 Virginia Street, Suite 700 Charleston, WV 25301