

8,420'

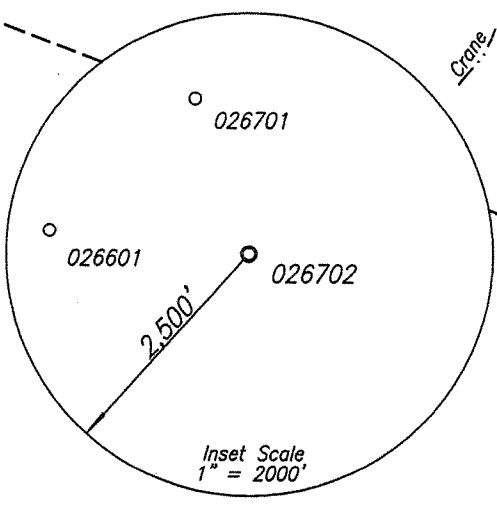
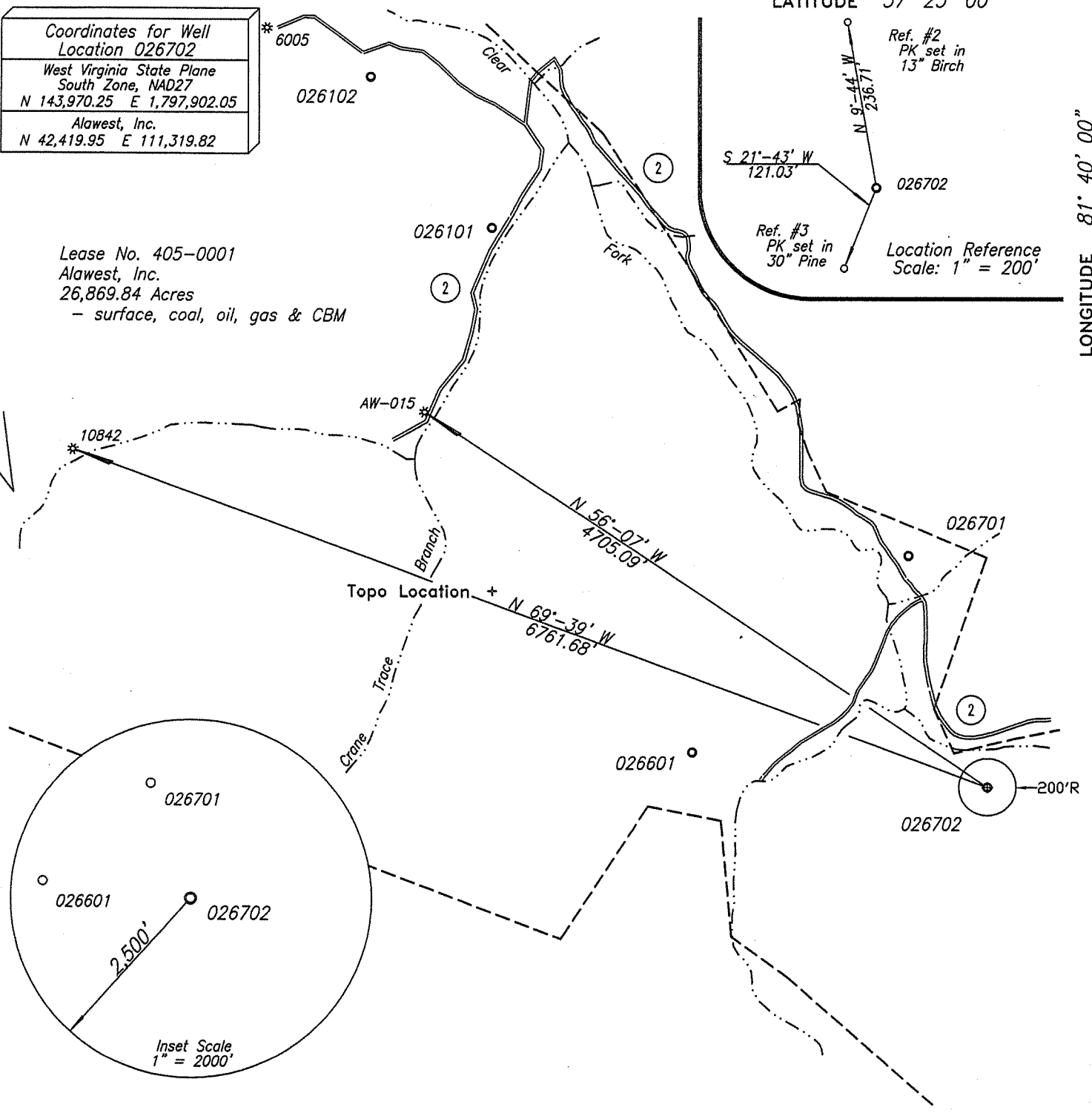
LATITUDE 37° 25' 00"

LONGITUDE 81° 40' 00"

Coordinates for Well Location 026702
West Virginia State Plane South Zone, NAD27
N 143,970.25 E 1,797,902.05
Alawest, Inc.
N 42,419.95 E 111,319.82

Lease No. 405-0001
 Alawest, Inc.
 26,869.84 Acres
 - surface, coal, oil, gas & CBM

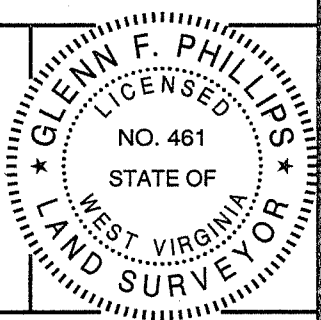
GRID NORTH



(+) DENOTES LOCATION OF WELL ON UNITED STATES TOPOGRAPHIC MAPS

FILE NO. _____
 DRAWING NO. _____
 SCALE 1" = 1,000'
 MINIMUM DEGREE OF ACCURACY 1 : 2,500
 PROVEN SOURCE OF ELEVATION NGS Sta. A 2 at Mercer County Airport

I THE UNDERSIGNED, HEREBY CERTIFY THAT THIS PLAT IS CORRECT TO THE BEST OF MY KNOWLEDGE AND BELIEF AND SHOWS ALL THE INFORMATION REQUIRED BY LAW AND THE REGULATIONS ISSUED AND PRESCRIBED BY THE DEPARTMENT OF ENVIRONMENTAL PROTECTION.
 (SIGNED) Glenn F. Phillips
 R.P.E. _____ L.L.S. 461



STATE OF WEST VIRGINIA
 DEPARTMENT OF ENVIRONMENTAL PROTECTION
 OIL AND GAS DIVISION



DATE July 5, 2006
 OPERATOR'S WELL NO. 026702
 API WELL NO. 47-047-02291C
 STATE COUNTY PERMIT

WELL TYPE: OIL GAS LIQUID INJECTION _____ WASTE DISPOSAL _____
 (IF "GAS,") PRODUCTION _____ STORAGE _____ DEEP _____ SHALLOW
 LOCATION: ELEVATION 1,405.30 WATERSHED Clear Fork of the Tug Fork River
 DISTRICT Big Creek COUNTY McDowell
 QUADRANGLE Davey
 SURFACE OWNER Alawest, Inc. ACREAGE 26,869.84
 OIL & GAS ROYALTY OWNER Alawest, Inc. LEASE ACREAGE 26,869.84 Acres
 LEASE NO. 405-0001

PROPOSED WORK: DRILL CONVERT _____ DRILL DEEPER _____ REDRILL _____ FRACTURE OR STIMULATE PLUG OFF OLD FORMATION _____ PERFORATE NEW FORMATION _____ OTHER PHYSICAL CHANGE IN WELL (SPECIFY) _____

PLUG AND ABANDON _____ CLEAN OUT AND REPLUG _____
 TARGET FORMATION Pennsylvanian Coals ESTIMATED DEPTH 1,198'
 WELL OPERATOR Dart Oil & Gas Corporation DESIGNATED AGENT Steven Hanley
 ADDRESS 999 Executive Park Blvd., Suite 320 Kingsport, TN 37664 ADDRESS 707 Virginia St. E., Charleston, WV 25301

COUNTY NAME McDowell
 PERMIT 2291C

AUG 1 1 2006

h-6 (267)

State of West Virginia
Department of Environmental Protection
Office of Oil and Gas

Well Operator's Report of Well Work

Farm name: Alawest, Inc. Operator Well No.: 026702

LOCATION: Elevation: 1405.30 Quadrangle: Davey

District: Big Creek County: McDowell
Latitude: 8,420 Feet South of 37 Deg. 25 Min. 00 Sec.
Longitude 8,530 Feet West of 81 Deg. 40 Min. 00 Sec.

Company Address:

Company Address:	Casing & Tubing	Used in drilling	Left in well	Cement fill up Cu. Ft.
Dart Oil & Gas Corporation				
999 Executive Park Blvd, Suite 320				
Kingsport, TN 37660	9 5/8"	62'	62'	Drive Pipe
	7"	250'	250'	to Surface
Agent: Jackie Lee Hatfield	4 1/2"		1022'	to Surface
Inspector: Barry Stollings				
Date Permit Issued: August 9, 2006				
Date Well Work Commenced: November 13, 2006				
Date Well Work Completed: December 19, 2006				
Verbal Plugging: N/A				
Date Permission granted on: N/A				
Rotary <input checked="" type="checkbox"/> Cable <input type="checkbox"/> Rig <input checked="" type="checkbox"/>				
Total Depth (feet): 1050'				
Fresh Water Depth (ft.): 90' & 210'				
Salt Water Depth (ft.): None				
Is coal being mined in area (N/Y)? N				
Coal Depths (ft.):				

OPEN FLOW DATA

Producing formation Pennsylvanian Coals Pay zone depth (ft) See back of WR-35
Gas: Initial open flow N/A MCF/d Oil: Initial open flow _____ Bbl/d
Final open flow _____ MCF/d Final open flow _____ Bbl/d
Time of open flow between initial and final tests _____ Hours
Static rock Pressure _____ psig (surface pressure) after _____ Hours

Second producing formation _____ Pay zone depth (ft) _____
Gas: Initial open flow _____ MCF/d Oil: Initial open flow _____ Bbl/d
Final open flow _____ MCF/d Final open flow _____ Bbl/d
Time of open flow between initial and final tests _____ Hours
Static rock Pressure _____ psig (surface pressure) after _____ Hours

NOTE: ON BACK OF THIS FORM PUT THE FOLLOWING: 1). DETAILS OF PERFORATED INTERVALS, FRACTURING OR STIMULATING, PHYSICAL CHANGE, ETC.).

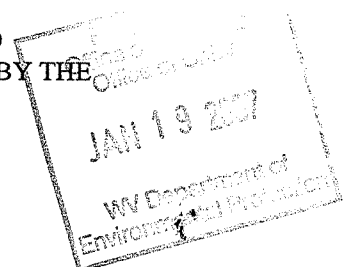
SUPPLEMENTAL Page #2: THE WELL LOG WHICH IS A SYSTEMATIC DETAILED GEOLOGICAL RECORD OF ALL FORMATIONS INCLUDING COAL ENCOUNTERED BY THE WELLBORE.

Signed:

Ed Diminick

By: Edward K. Diminick, District Manager
Date: _____

MAR 02 2007



State of West Virginia
Department of Environmental Protection
Office of Oil and Gas

Well Operator's Report of Well Work

API # 47-47-02291

Well No. WC-026702

Date: 12/20/06

Perforated Intervals

Stimulation

Poco#1 893.5-94.5' 4 holes

2,200# 20/40 Sd, 111 bbls water

Poco#3 781-83.5' 10 holes

5,100# 20/40 Sd, 241 bbls water

Poco#4 651.5-55' 14 holes

7,000# 20/40 Sd, 344 bbls water

Poco #7 493.5-97' 14 holes

7,100# 20/40 Sd, 335 bbls water

Poco#8 407-08.5' 6 holes

3,200# 20/40 Sd, 151 bbls water

Lo Fire Ck 316-17' 4 holes

Combined treatment of

Fire Ck 291-93' 8 holes

8,200# 20/40# Sd, 359 bbls water

Fire Ck Ryder 277-78' 4 holes

MAR 02 2007