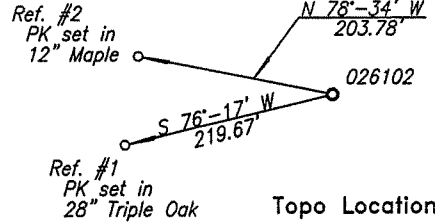


630'

LATITUDE 37° 25' 00"

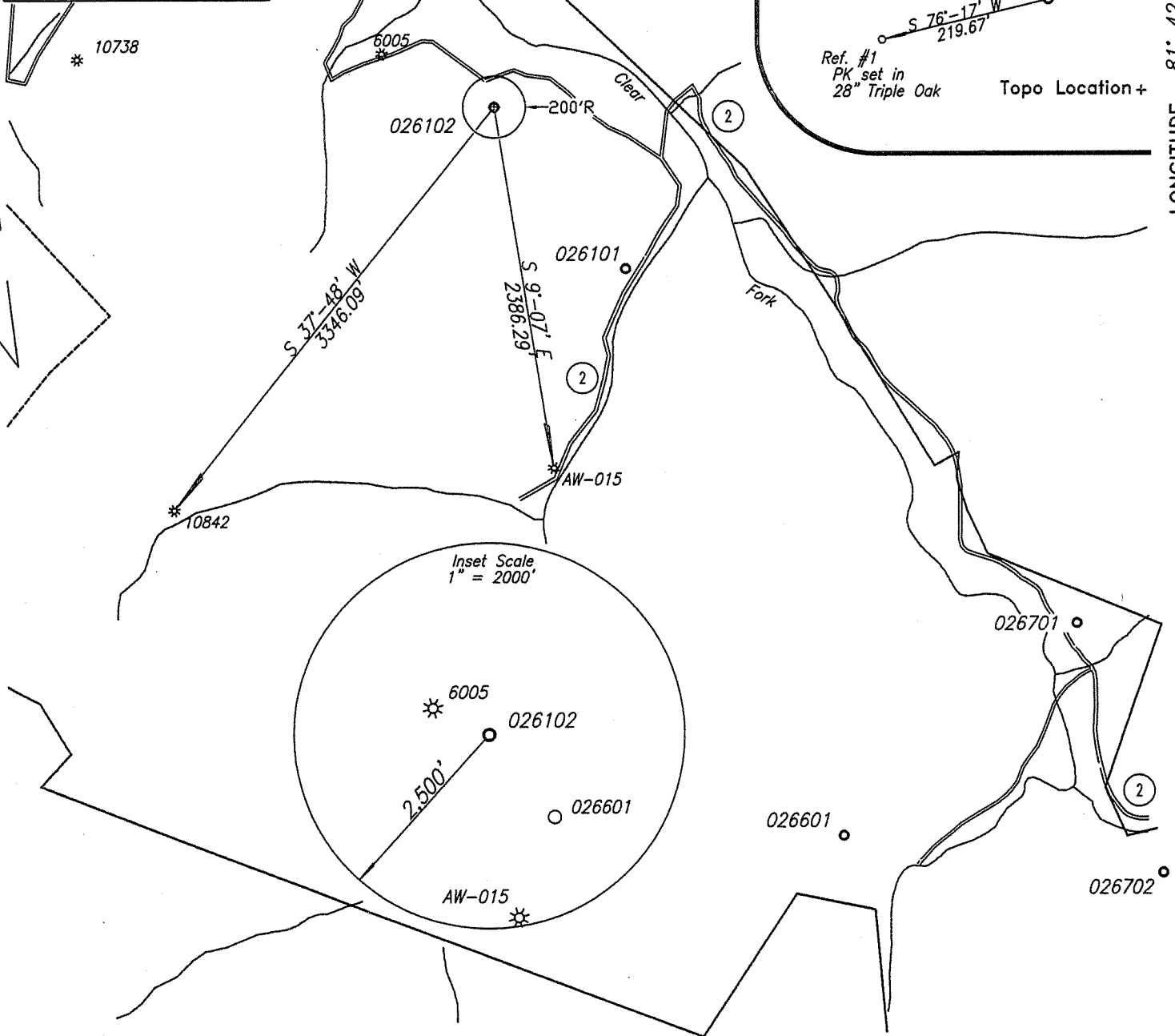
Location Reference  
Scale: 1" = 200'



LONGITUDE 81° 42' 30"

Coordinates for Well  
Location 026102  
West Virginia State Plane  
South Zone, NAD27  
N 148,949.43 E 1,793,618.37  
Alawest, Inc.  
N 47,314.63 E 107,047.41

GRID NORTH

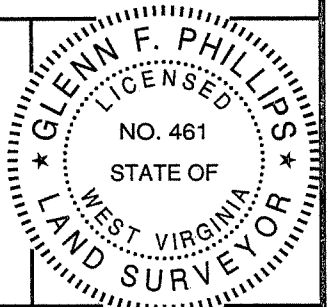


(+) DENOTES LOCATION OF WELL ON UNITED STATES TOPOGRAPHIC MAPS

FILE NO. \_\_\_\_\_  
DRAWING NO. \_\_\_\_\_  
SCALE 1" = 1,000'  
MINIMUM DEGREE OF  
ACCURACY 1 : 2,500  
PROVEN SOURCE OF  
ELEVATION NGS Sta. A 2  
at Mercer County Airport

I THE UNDERSIGNED, HEREBY CERTIFY THAT  
THIS PLAT IS CORRECT TO THE BEST OF MY  
KNOWLEDGE AND BELIEF AND SHOWS ALL THE  
INFORMATION REQUIRED BY LAW AND THE REGU-  
LATIONS ISSUED AND PRESCRIBED BY THE DEPART-  
MENT OF ENVIRONMENTAL PROTECTION.

(SIGNED) Glenn F. Phillips  
R.P.E. \_\_\_\_\_ L.L.S. 461



STATE OF WEST VIRGINIA  
DEPARTMENT OF ENVIRONMENTAL PROTECTION  
OIL AND GAS DIVISION



DATE July 5, 2006  
OPERATOR'S WELL NO. 026102  
API WELL NO. \_\_\_\_\_

WELL TYPE: OIL  GAS  LIQUID INJECTION  WASTE DISPOSAL   
(IF "GAS,") PRODUCTION  STORAGE  DEEP  SHALLOW   
LOCATION: ELEVATION 1,492.63 WATERSHED Clear Fork of the Tug Fork River  
DISTRICT Big Creek COUNTY McDowell  
QUADRANGLE Davey  
SURFACE OWNER Alawest, Inc. ACREAGE 26,869.84  
OIL & GAS ROYALTY OWNER Alawest, Inc. LEASE ACREAGE 26,869.84 Acres  
LEASE NO. 405-0001

47 047 02288C  
STATE COUNTY PERMIT

PROPOSED WORK: DRILL  CONVERT  DRILL DEEPER  REDRILL  FRACTURE OR  
STIMULATE  PLUG OFF OLD FORMATION  PERFORATE NEW  
FORMATION  OTHER PHYSICAL CHANGE IN WELL (SPECIFY) \_\_\_\_\_  
AUG 1 1 2006

PLUG AND ABANDON  CLEAN OUT AND REPLUG   
TARGET FORMATION Pennsylvanian Coals ESTIMATED DEPTH 1,268'  
WELL OPERATOR Dart Oil & Gas Corporation DESIGNATED AGENT Steven Hanley  
ADDRESS 999 Executive Park Blvd., Suite 320 ADDRESS 707 Virginia St. E., Charleston, WV 25301  
Kingsport, TN 37664

COUNTY NAME McDowell  
PERMIT 02288C

(Big SANDY 285) 6-6

State of West Virginia  
Department of Environmental Protection  
Office of Oil and Gas  
Well Operator's Report of Well Work

Farm name: Alawest, Inc. Operator Well No.: 026102

LOCATION: Elevation: 1492.63 Quadrangle: Davy

District: Big Creek County: McDowell  
Latitude: 630 Feet South of 37 Deg. 25 Min. 00 Sec.  
Longitude 3,580 Feet West of 81 Deg. 42 Min. 30 Sec.

Company Address:

Dart Oil & Gas Corporation 999 Executive Park Blvd, Suite 320 Kingsport, TN 37660	Casing & Tubing	Used in drilling	Left in well	Cement fill up Cu. Ft.
	9 5/8"	31'	31'	Drive Pipe
	7"	281'	281'	to Surface
Agent: Jackie Lee Hatfield	4 1/2"		1148'	to Surface
Inspector: Barry Stollings	2 3/8"		1110'	
Date Permit Issued: August 9, 2006				
Date Well Work Commenced: Nov 19, 2006				
Date Well Work Completed: April 04, 2007				
Verbal Plugging: N/A				
Date Permission granted on: N/A				
Rotary <input checked="" type="checkbox"/> Cable Rig <input checked="" type="checkbox"/>				
Total Depth (feet): 1208'				
Fresh Water Depth (ft.): 400'				
Salt Water Depth (ft.): None				
Is coal being mined in area (N/Y)? N				
Coal Depths (ft.): N/A				

OPEN FLOW DATA: None available

Producing formation Pennsylvanian Coals Pay zone depth (ft) See Page 2 of WR-35

Gas: Initial open flow N/A MCF/d Oil: Initial open flow Bbl/d

Final open flow MCF/d Final open flow Bbl/d

Time of open flow between initial and final tests Hours

Static rock Pressure psig (surface pressure) after Hours

Second producing formation Pay zone depth (ft)

Gas: Initial open flow MCF/d Oil: Initial open flow Bbl/d

Final open flow MCF/d Final open flow Bbl/d

Time of open flow between initial and final tests Hours

Static rock Pressure psig (surface pressure) after Hours

NOTE: ON BACK OF THIS FORM PUT THE FOLLOWING: 1). DETAILS OF PERFORATED INTERVALS, FRACTURING OR STIMULATING, PHYSICAL CHANGE, ETC.).

**SUPPLEMENTAL Page #3:** THE WELL LOG WHICH IS A SYSTEMATIC DETAILED GEOLOGICAL RECORD OF ALL FORMATIONS INCLUDING COAL ENCOUNTERED BY THE WELLBORE.

Signed: Edward K. Diminick  
By: Edward K. Diminick, District Manager  
Date: 6-21-07

RECEIVED  
Office of Oil & Gas  
Office of Chief  
JUN 25 2007  
WV Department of  
Environmental Protection  
McDowell 2288M

AUG 10 2007

Farm Name: Alawest, Inc.  
 Operation's Well #: 026102  
 API # : 47-4702288

DRILLER'S LOG

Compiled by: Tom O'Neill, Geologist

Geologic Age	Formation	General Lithology	Color	Depth		Thickness	Remarks
				Top	Bottom		
Pennsylvanian	Lee	Sandstone, Shale, Coal		0	293		
Pennsylvanian	Lee	Coal		293	296.5	3.5	
Pennsylvanian	Lee	Sandstone & Shale		296.5	356.5		
Pennsylvanian	Lee	Coal & Shale		356.5	364		
Pennsylvanian	Lee	Sandstone & Shale		364	412.5		
Pennsylvanian	Lee	Coal		412.5	414.5	2.0'	
Pennsylvanian	Pocahontas	Sandstone & Shale		414.5	484.5		
Pennsylvanian	Pocahontas	Coal		484.5	485.5	1.0'	
Pennsylvanian	Pocahontas	Sandstone & Shale		485.5	603		
Pennsylvanian	Pocahontas	Coal		603	604.5	1.5'	
Pennsylvanian	Pocahontas	Sandstone & Shale		604.5	770.5		
Pennsylvanian	Pocahontas	Coal		770.5	773.5	3.0'	
Pennsylvanian	Pocahontas	Sandstone, Shale, Coal		773.5	893.5		
Pennsylvanian	Pocahontas	Coal		893.5	897	3.5	
Pennsylvanian	Pocahontas	Sandstone, Shale, Coal		897	998.5		
Pennsylvanian	Pocahontas	Coal		998.5	1000.5	2.0'	
Pennsylvanian	Pocahontas	Sandstone & Shale		1000.5	1200		

Permittee: Dart Oil & Gas Corporation (Company)

By: Edward K Diminick (Signature)  
 Edward K. Diminick, District Manager