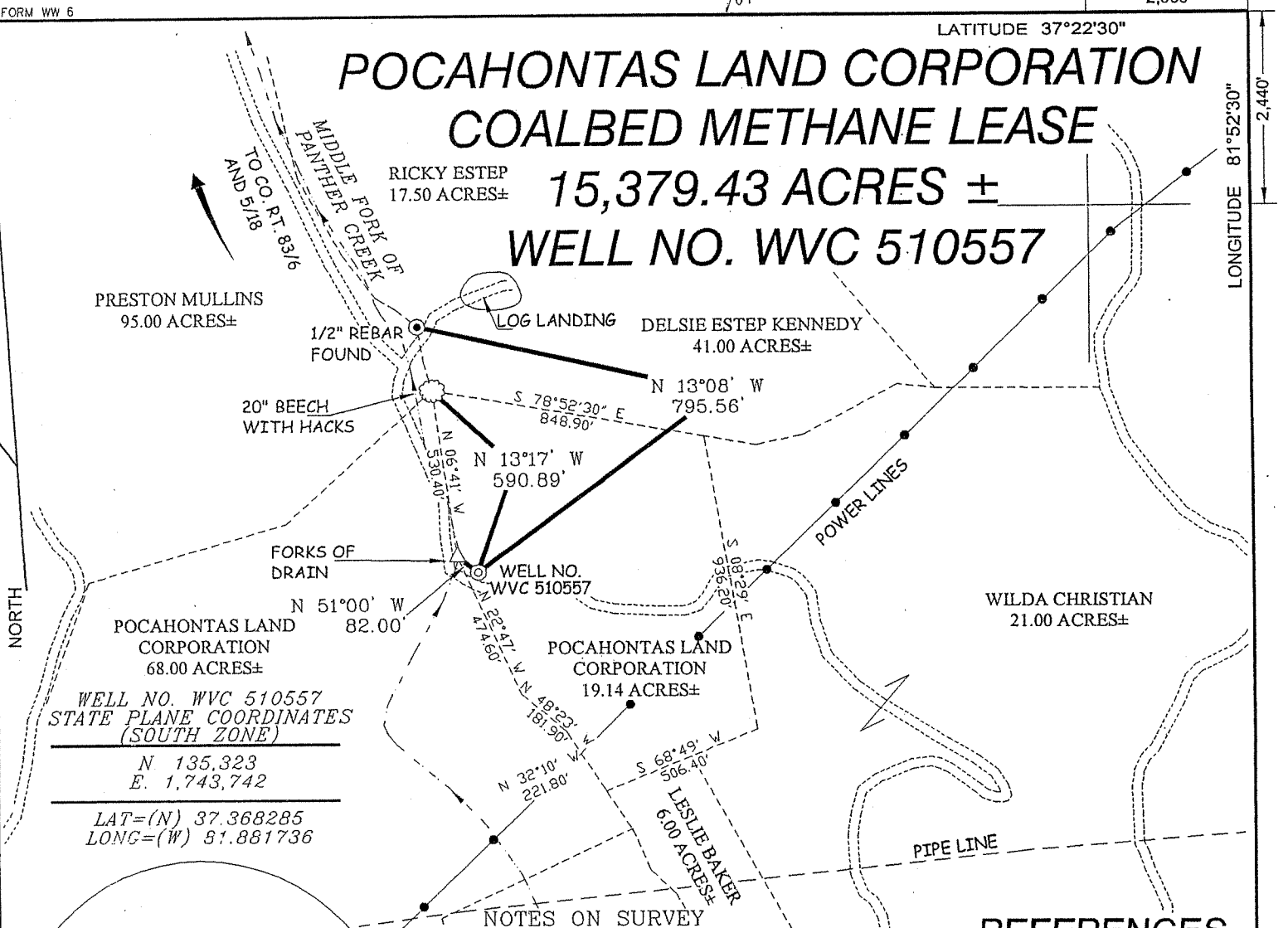
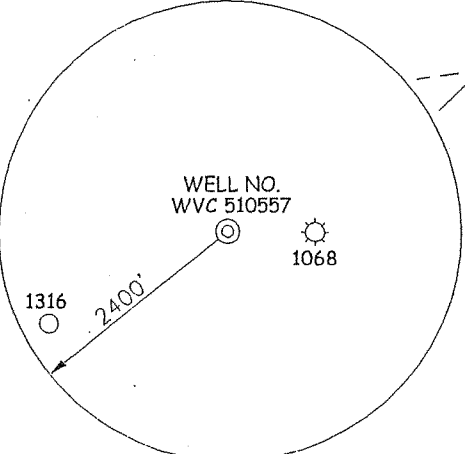


POCAHONTAS LAND CORPORATION COALBED METHANE LEASE

15,379.43 ACRES ± WELL NO. WVC 510557



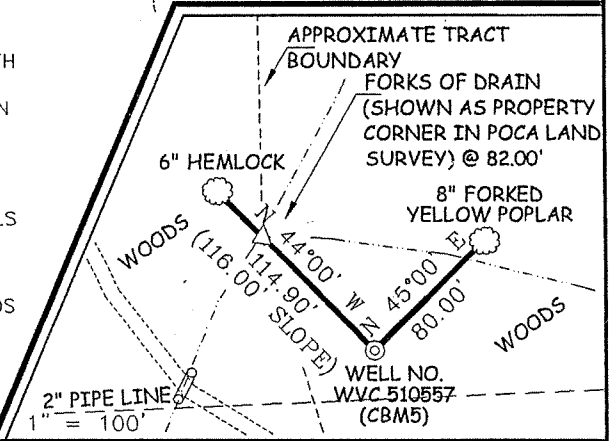
WELL NO. WVC 510557
STATE PLANE COORDINATES (SOUTH ZONE)
N 135,323
E. 1,743,742
LAT=(N) 37.368285
LONG=(W) 81.881736



NOTES ON SURVEY

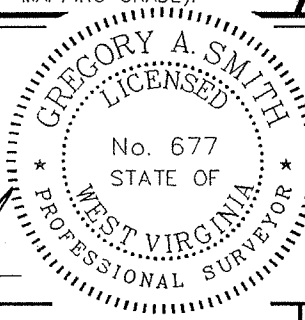
1. TIES TO WELLS AND CORNERS ARE BASED ON GRID NORTH FOR THE WV STATE PLANE COORDINATE SYSTEM SOUTH ZONE NAD '27.
2. TIES TO REFERENCES ARE BASED ON MAGNETIC NORTH 11/17/05.
3. TRACT BOUNDARY SHOWN HEREON TAKEN FROM A POCAHONTAS LAND CORPORATION MAP AND FIELD NOTES DATED APRIL 28, 1952 SUPPLIED TO SLS BY EQUITABLE PRODUCTION COMPANY.
4. SURFACE OWNER AND ADJOINER INFORMATION TAKEN FROM THE ASSESSOR AND COUNTY CLERK RECORDS OF McDOWELL COUNTY IN OCTOBER, 2005.
5. WELL LAT./LONG. (NAD'27) ESTABLISHED BY DGPS(SUBMETER MAPPING GRADE).

REFERENCES



THIS PLAT IS CORRECT TO THE BEST OF MY KNOWLEDGE AND BELIEF AND SHOWS ALL THE INFORMATION REQUIRED BY LAW AND THE REGULATIONS ISSUED AND PRESCRIBED BY THE DIVISION OF ENVIRONMENTAL PROTECTION.

P.S. 677 *Gregory A. Smith*



(+) DENOTES LOCATION OF WELL ON UNITED STATES TOPOGRAPHIC MAPS.
DATE NOVEMBER 28, 20 05
OPERATORS WELL NO. WVC 510557
API WELL NO. 47 - 047 - 02170C
STATE COUNTY PERMIT

MINIMUM DEGREE OF ACCURACY 1/2500 FILE NO. 5905P510557 (202-6)
PROVEN SOURCE OF ELEVATION DGPS (SUBMETER MAPPING GRADE) SCALE 1"=500'

STATE OF WEST VIRGINIA
DIVISION OF ENVIRONMENTAL PROTECTION
OFFICE OF OIL AND GAS



WELL TYPE: OIL GAS LIQUID INJECTION WASTE DISPOSAL IF "GAS" PRODUCTION STORAGE DEEP SHALLOW

LOCATION: ELEVATION 1,672' WATERSHED MIDDLE FORK OF PANTHER CREEK
DISTRICT SANDY RIVER COUNTY McDOWELL QUADRANGLE PATTERSON 7.5'

SURFACE OWNER POCAHONTAS LAND CORPORATION ACREAGE 19.14±
ROYALTY OWNER PENN VIRGINIA OIL & GAS CORPORATION LEASE ACREAGE 15,379.43±
PROPOSED WORK: LEASE NO. WV 497880-01
DRILL CONVERT DRILL DEEPER REDRILL FRACTURE OR STIMULATE PLUG OFF OLD FORMATION PERFORATE NEW FORMATION PLUG AND ABANDON CLEAN OUT AND REPLUG OTHER

PHYSICAL CHANGE IN WELL (SPECIFY) _____ TARGET FORMATION POCAHONTAS #1
ESTIMATED DEPTH 2,150'

WELL OPERATOR EQUITABLE PRODUCTION COMPANY DESIGNATED AGENT STEPHEN G. PERDUE JUN 16 2006
ADDRESS 1710 PENNSYLVANIA AVENUE ADDRESS 1710 PENNSYLVANIA AVENUE
CHARLESTON, WV 25302 CHARLESTON, WV 25302

COUNTY NAME McDOWELL
PERMIT 2170 C