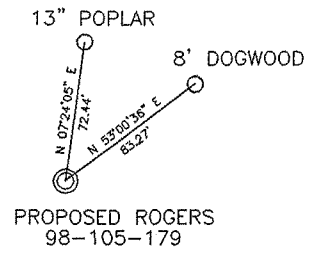


(+) DENOTES LOCATION OF WELL ON 7.5' TOPOGRAPHIC MAP



REFERENCES SCALE 1"=100'
 WELL COORDINATES
 WV STATE PLANE
 SOUTH ZONE NAD 1927
 N. 109360.10
 E. 1753051.01

TEE Engineering Company, Inc.
 320 Cincers Hill Court
 Lexington, KY 40509
 (859) 263-5350
 Fax (859) 263-5345



P.O. Box 219
 Stanville, KY 41659
 (606) 478-9024
 Fax (606) 478-9019

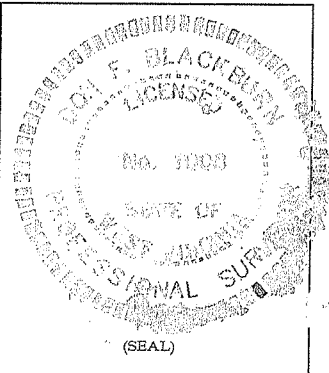
GeoMet Operating Company, Inc.
 Well No. ROGERS 98-105-179

FILE NO. 1883-08/2005 WELLS
 DRAWING NO. WELL ROGERS 179 PLAT
 SCALE: 1" = 2,000'
 MIN. DEGREE OF ACCURACY 1:2,500
 PROVEN SOURCE OF ELEVATION
 GPS STATION TEC-1 (ELEV. 2406.60)

I, THE UNDERSIGNED, HEREBY CERTIFY THAT THIS PLAT IS CORRECT TO THE BEST OF MY KNOWLEDGE AND BELIEF AND SHOWS ALL THE INFORMATION REQUIRED BY LAW AND THE REGULATIONS ISSUED AND PRESCRIBED BY THE DEPARTMENT OF MINES.

Don F. Black
 (SIGNATURE)

R.P.E. _____ R.P.S. 1008



STATE OF WEST VIRGINIA
 DEPARTMENT OF ENVIRONMENTAL PROTECTION
 OFFICE OF OIL AND GAS

DATE FEBRUARY 16, 2005
 OPERATOR'S WELL NO. ROGERS 98-105-179
 API WELL NO. 47 - 047 - 02051C
 STATE COUNTY PERMIT

WELL TYPE: OIL _____ GAS X CBM _____ LIQUID INJECTION _____ WASTE DISPOSAL _____
 (IF "GAS") PRODUCTION X STORAGE _____ DEEP _____ SHALLOW _____
 LOCATION: ELEVATION 1,921.17' NORTHING 109360.10 EASTING 1753051.01
 DISTRICT SANDY RIVER WATER SHED MIDDLE FORK OF BRADSHAW CREEK
 QUADRANGLE BRADSHAW COUNTY McDOWELL
 SURFACE OWNER DANNY & VICIE ANN RIFE ACREAGE _____
 CBM ROYALTY OWNER LBR HOLDINGS, LLC LEASE ACREAGE 3,836.13

LEASE NO. _____ RECORDING IN PROGRESS
 PROPOSED WORK: DRILL X CONVERT _____ DRILL DEEPER _____ REDRILL _____ FRACTURE OR
 STIMULATE X PLUG OFF OLD FORMATION _____ PERFORATE NEW
 FORMATION _____ OTHER PHYSICAL CHANGE IN WELL (SPECIFY) _____

PLUG AND ABANDON _____ CLEAN OUT AND REPLUG _____
 TARGET FORMATION NEW RIVER AND POCAHONTAS COALS ESTIMATED DEPTH 1,732.17'
 WELL OPERATOR GEOMET OPERATING COMPANY, INC. DESIGNATED AGENT KERRY HILL
 ADDRESS 5336 STADIUM TRACE PARKWAY SUITE 206 BIRMINGHAM, ALABAMA 35244
 ADDRESS 330 HARPER PARK DRIVE SUITE A BECKLEY, WV 25801

6-6(350)

APR 22 2005

Mc Dow 2051C

State of West Virginia
Department of Environmental Protection
Office of Oil and Gas

AVB

Well Operator's Report of Well Work

FARM NAME: Danny & Vicie Rife OPERATOR WELL NO.: PC 98-105-179

LOCATION:

Elevation: 1,921.17' Quadrangle: Bradshaw

District: Sandy River County: McDowell
Latitude: 4,528 Feet South of 37 Deg. 20 Min. 00 Sec.
Longitude: 13,150 Feet West of 81 Deg. 50 Min. 00 Sec.

Company: <u>GeoMet Operating Company</u>	Casing & Tubing	Used in Drilling	Left in Well	Cement fill up Cu. Ft.
Address: 5336 Stadium Trace Parkway, Suite 206 Birmingham, Alabama 35244	13-3/8"	22'	22'	
Agent: Gregg Cleary				
Inspector: Bill Hatfield	8-5/8"	333'	333'	75/Pumped 174
Date Permit Issued: April 19, 2005				
Date Well Work Commenced: May 13, 2005	5-1/2	1724'	1724'	299/Pumped 190
Date Well Work Completed: May 25, 2005				
Verbal Plugging:				
Date Permission granted on:				
Rotary XXXX Cable Rig				
Total Depth (feet): 1744'				
Fresh Water Depth (feet): Unknown				
Salt Water Depth (feet): Unknown				
Is coal being mined in area (N/Y)? No				

RECEIVED
Office of Oil & Gas
Office of Chief
JUN 22 2005
WV Department of
Environmental Protection

Coal Depths (feet): 462, 463, 551, 554, 579, 588, 651, 728, 769, 935, 1007, 1065, 1113, 1157, 1173, 1249, 1284, 1312, 1336, 1373, 1398, 1452, 1483, 1510, 1604

OPEN FLOW DATA

Producing formation All Zones Commingled Pay zone depth (ft) _____
Gas: Initial Open Flow 35 MCF/d Oil: Initial Open Flow _____ Bbl/d
Final Open Flow N/A MCF/d Final Open Flow _____ Bbl/d
Time of Open Flow between initial and final tests N/A Hours
Static Rock Pressure 110 psig (surface pressure) after 96 Hours

NOTE: ON BACK OF THIS FORM PUT THE FOLLOWING: 1). DETAILS OF PERFORATED INTERVALS, FRACTURING OR STIMULATING, PHYSICAL CHANGE, ETC. 2). THE WELL LOG WHICH IS A SYSTEMATIC DETAILED GEOLOGICAL RECORD OF ALL FORMATIONS, INCLUDING COAL ENCOUNTERED BY THE WELLBORE.

SIGNED: *Ren B. G...*
BY: *Kellen Dye*
DATE: June 15, 2005

McDow 2051

SEP 02 2005
SEP 02 2005

DRILL DATA HOLE-NOAH HORN WELL DRILLING, INC

COMPANY: GEOMET

HOLE #: 179

LOCATION: THREE FORKS

DRILL RIG #: 45

DATE STARTED: 05-13-05

DATED COMPLETED: 05-16-05

ELECTRIC LOGGED: YES

GROUTED: YES

DEPTH		THICKNESS	STRATA	REMARKS
FROM	TO	FT	DESCRIPTION, VOIDS ETC	
0	22	22	OVERBURDEN 22' W/ 13 3/8" CASING	
22	30	8	SAND	
30	60	30	SAND / SHALE / COAL	
60	90	30	SAND	
90	120	30	SANDY / SHALE	
120	150	30	SANDY SHALE / SAND STONE	
150	180	30	SANDY SHALE	
180	240	60	SAND STONE	
240	270	30	SAND STONE / SANDY SHALE	
270	300	30	SANDY SHALE	
300	330	30	SANDY SHALE / SAND STONE	
330	360	30	SAND STONE 333' W/ 8 5/8" CASING	
360	390	30	SANDY SHALE	
390	420	30	SAND / SHALE / COAL	
420	450	30	SANDY / SHALE / COAL	
450	480	30	SAND / SHALE	
480	510	30	SAND	
510	570	60	SAND / SHALE / COAL	
570	600	30	SANDY SHALE	
600	630	30	SANDY SHALE	
630	780	150	SAND / SHALE / COAL	
780	810	30	SANDY SHALE	
810	840	30	SAND / SHALE / COAL	
840	870	30	SAND	
870	930	60	SAND / SHALE / COAL	
930	960	30	SANDY SHALE	
960	990	30	SAND	
990	1020	30	SAND / SHALE / COAL	
1020	1050	30	SAND	
1050	1110	60	SAND / SHALE / COAL	
1110	1140	30	SAND	
1140	1200	60	SAND / SHALE / COAL	
1200	1230	30	SANDY / SHALE	
1230	1260	30	SAND / SHALE / COAL	
1260	1290	30	SANDY SHALE	
1290	1380	90	SAND / SHALE / COAL	
1380	1410	30	SANDY SHALE	
1410	1440	30	SAND STONE	
1440	1470	30	SANDY SHALE / COAL	
1470	1500	30	SANDY SHALE / SAND STONE	
1500	1560	60	SANDY SHALE	
1560	1590	30	SANDY SHALE / COAL / SAND STONE	

1590	1620	30	SANDY SHALE / RED ROCK
1620	1650	30	SAND STONE
1650	1680	30	SAND STONE / SANDY SHALE
1680	1740	60	SANDY SHALE
			1724' W/ 5 1/2" CASING

1740.00 FT. TOTAL DEPTH
 22.00 FT. OF 13 3/8" CASING
 333.00 FT. OF 8 5/8" CASING
 1724.00 FT. OF 5 1/2" CASING

M-Down 2051

SEP 09 2005

SEP 09 2005

**GeoMet Operating Company, Inc.
Perforation and Frac Volume Specification**

Well Name Rogers 179 PBTD 1730

Zone and Perforation Table

Frac	1450'-1453		Ball Out Yes	Bridge Plug Set @	Est Sand Weight	Actual Sand Weight
	1482	1484				
Stage 1 Interval						
N2 Scf	344,000		Ball out Bridge Plug 1430'		20,000	20,400
Acid	250					
Gel Volume	7,056					
ISIP	1,749					
ATP	2,800					
AIR	25.5	BPM				
Stage 2 Interval	1,371	1373		1397-1399		20,000
N2 Scf	311,000		Ball Out Bridge Plug 1360'			
Acid	500					
Gel Volume	6,304					
ISIP	1,762					
ATP	2,996					
AIR	26	BPM				
Stage 3 Interval	1,249	1251		1282-1284 1311-1312		30,000
N2 Scf	533,000		Ball Out Bridge Plug 1200'			
Acid	500					
Gel Volume	9,996					
ISIP	1,610					
ATP	3,200					
AIR	26	BPM				
Stage 4 Interval	1,112	1114		1156-1158 1173-1175		30,000
N2 Scf	463,000		Ball Out Bridge Plug 1085'			
Acid	500					
Gel Volume	9,152					
ISIP	1,452					
ATP	2,965					
AIR	26.5	BPM				
Stage 5 Interval	1,005	1007		1064-1066		25,000
N2 Scf	411,000		Ball Out Bridge Plug 800'			
Acid	500					
Gel Volume	6,888					
ISIP	1,474					
ATP	3,373					
AIR	22	BPM				

Well Name ROGERS 179

PBTD

1730

Zone and Perforation Table

Stage Interval	727-729		Ball Out	Bridge Plug Set @	Est Sand Weight	Actual Sand Weight
	768	770				
Stage 6 Interval						
N2 Scf	223,000		Ball Out Bridge Plug 680'		15,000	15,500
Acid	500					
Gel Volume	5,044					
ISIP	1,115					
ATP	2,387					
AIR	27	BPM				
Stage 7 Interval	551	553				15,000
N2 Scf	148,000		577-579	586-588		
Acid	500		650-652			
Gel Volume	4,746		Ball Out No Bridge Plug			
ISIP	913					
ATP	1,784					
AIR	27	BPM				
Stage 8 Interval						
N2 Scf						
Acid						
Gel Volume						
ISIP						
ATP						
AIR						
Stage 9 Interval						
N2 Scf						
Acid						
Gel Volume						
ISIP						
ATP						
AIR						
Stage 10 Interval						
N2 Scf						
Acid						
Gel Volume						
ISIP						
ATP						
AIR						

Mc Dow 8051