

West Virginia State Plane Coordinates
NAD 27

LATITUDE 37° 30' 00"

3335'
Topo Location

N 182,025.406
E 1,815,344.434

47-047-01482

Pocahontas Land Corporation -
Surface & Coal

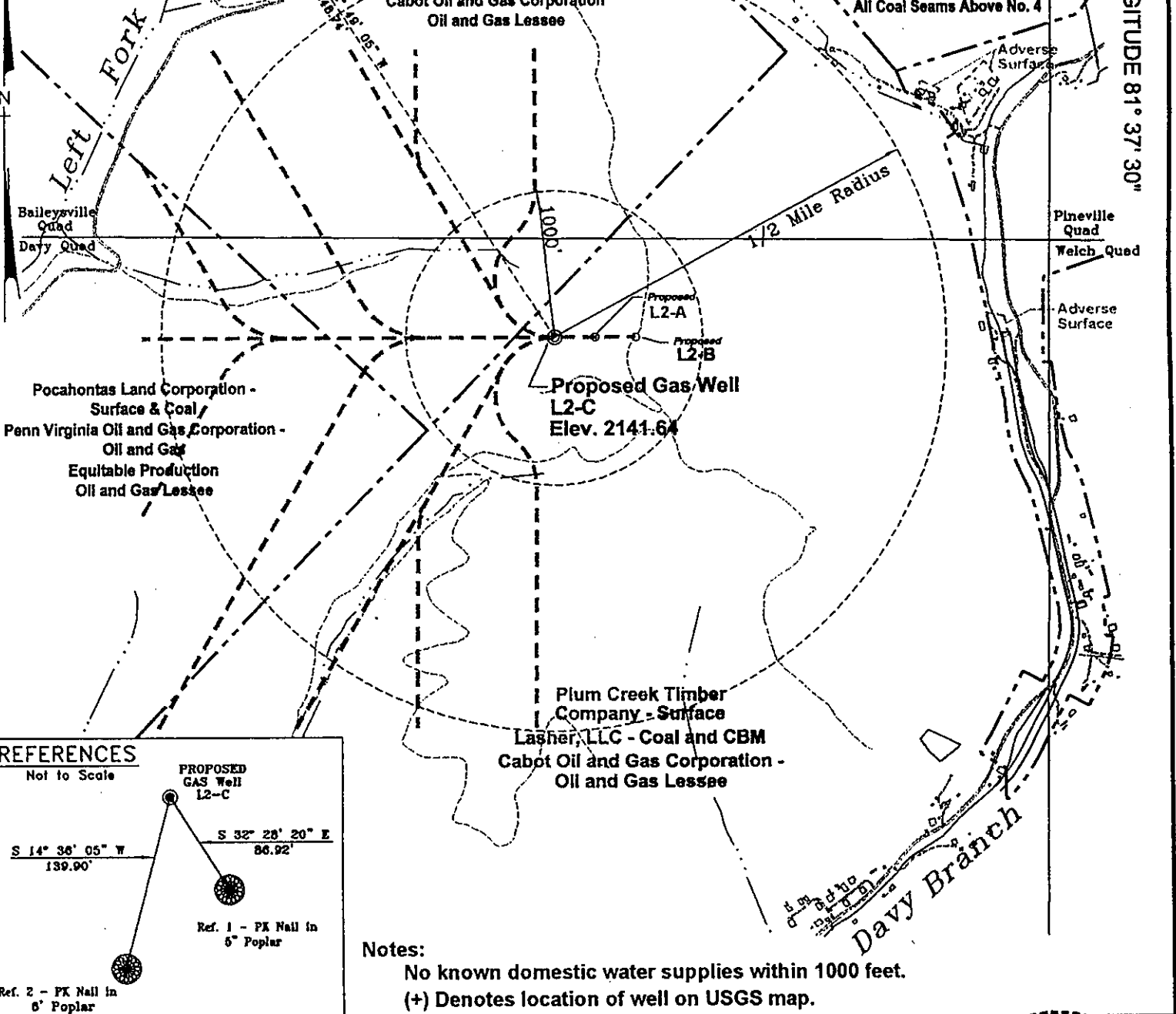
Penn Virginia Oil and Gas Corporation -
Oil and Gas

Cabot Oil and Gas Corporation
Oil and Gas Lessee

Pinnacle Land Co. LLC
Surface, Oil and Gas
W.P.P. LLC - No. 3 & 4
Coal Seams

Bluestone Coal Corporation -
All Coal Seams Above No. 4

750'
LONGITUDE 81° 37' 30"



REFERENCES

Not to Scale

PROPOSED
GAS Well
L2-C

S 14° 36' 05" W 139.90'
S 52° 28' 20" E 86.92'

Ref. 1 - PK Nail in
5" Poplar

Ref. 2 - PK Nail in
6" Poplar

Notes:

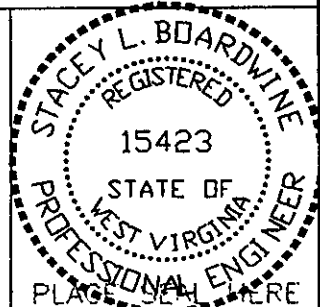
No known domestic water supplies within 1000 feet.
(+) Denotes location of well on USGS map.

FILE No. CDXGAS
DRAWING NAME \CDX-2003\1-2Wells
DRAWING NAME PlotL-2C
SCALE 1" = 1000'
MINIMUM DEGREE OF
ACCURACY 1 : 2500
PROVEN SOURCE OF
ELEVATION GPS - GLOBAL
POSITIONING SYSTEM

I THE UNDERSIGNED, HEREBY CERTIFY THAT
THIS PLAT IS CORRECT TO THE BEST OF MY
KNOWLEDGE AND BELIEF AND SHOWS ALL THE
INFORMATION REQUIRED BY LAW AND THE REGU-
LATIONS ISSUED AND PRESCRIBED BY THE
DEPARTMENT OF MINES.

(SIGNED)

Stacey L. Boardwine
R.P.E. 15423 R.P.S.



STATE OF WEST VIRGINIA
DEPARTMENT OF ENVIRONMENTAL PROTECTION
OFFICE OF OIL AND GAS
CHARLESTON, WV

DATE JULY 23, 2003
OPERATOR'S WELL No. L2-C
API WELL No. 47 - 047 - 01828C
STATE COUNTY PERMIT

WELL TYPE: OIL GAS CBM LIQUID INJECTION WASTE DISPOSAL
(IF "GAS") PRODUCTION X STORAGE DEEP SHALLOW
LOCATION: ELEVATION 2141.64 WATER SHED UNNAMED TRIBUTARY OF LEFT FORK OF DAVY BRANCH OF TUG FORK
DISTRICT BROWNS CREEK COUNTY McDOWELL
QUADRANGLE DAVY, WV

SURFACE OWNER PLUM CREEK TIMBER COMPANY ACREAGE 3,786.13
CBM ROYALTY OWNER LASHER, LLC LEASE ACREAGE _____
PENN VIRGINIA OIL AND GAS CORPORATION
LEASE No. _____

PROPOSED WORK: DRILL X CONVERT DRILL DEEPER REDRILL FRACTURE OR
STIMULATE PLUG OFF OLD FORMATION PERFORATE NEW
FORMATION OTHER PHYSICAL CHANGE IN WELL (SPECIFY)

PLUG AND ABANDON CLEAN OUT AND REPLUG
TARGET FORMATION POCAHONTAS NO. 3 AND PENN. COALS ESTIMATED DEPTH 1480'
WELL OPERATOR CDX GAS, LLC DESIGNATED AGENT JOSEPH ZUPANICK
ADDRESS P.O. BOX 609 ADDRESS P.O. BOX 609
PINEVILLE, WV 24874 PINEVILLE, WV 24874

DEC 05 2003

1828-C

State of West Virginia
Division of Environmental Protection
Section of Oil & Gas
Well Operator's Report of Well Work

MP

Farm name: Plum Creek Timber Company

Operator Well No: L-2C

Location: Elevation: 2141.64'

Quadrangle: Davy

District: Browns Crekk

County: McDowell

Latitude: 3335 Feet South of 37 Deg. 30 Min. 00 Sec.
Longitude: 750 Feet West of 81 Deg. 37 Min. 30 Sec.

Company: CDX Gas, LLC
P.O. Box 609
Pineville, WV 24874

Agent: JOSEPH A. ZUPANICK

Inspector: Raulph Triplett
Permit Issued: 12/1/2003
Well Work commenced: 6/23/04
Well Work completed: 8/30/04

Casing & Tubing Size	Used in Drilling	Left in Well	Cement Fill up (cuft)
16"	41'	41'	8.3
9 5/8"	726'	726'	240
7"	1027'	1027'	154
2 7/8"	1428'	1428'	Hanging

Verbal plugging
Permission granted on:
Rotary Cable _____ Rig

Total depth (ft) 1475'
Fresh water depths (ft) N/A
Salt water depths (ft) N/A

Is coal being mined in the area (Y/N)? Y
Coal depths (ft): 1068', 1428'

OPEN FLOW DATA

Producing formation Poca No. 3
Gas: Initial open flow N/A Mcf/d
Final open flow N/A Mcf/d
Time of open flow between initial and final tests: _____ hours
Static rock pressure _____ psig (surface pressure) after _____ hours

Pay zone depth (ft) 1428'
Oil: Initial open flow _____ Bbl/d
Final open flow _____ Bbl/d

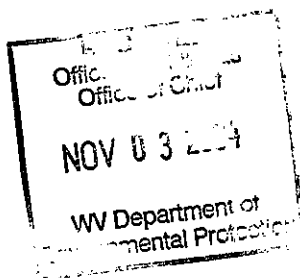
Second Producing formation _____
Gas: Initial open flow _____ Mcf/d
Final open flow _____ Mcf/d
Time of open flow between initial and final tests: _____ hours
Static rock pressure _____ psig (surface pressure) after _____ hours

Pay zone depth _____ (ft)
Oil: Initial open flow _____ Bbl/d
Final open flow _____ Bbl/d

Third Producing formation _____
Gas: Initial open flow _____ Mcf/d
Final open flow _____ Mcf/d
Time of open flow between initial and final tests: _____ hours
Static rock pressure _____ psig (surface pressure) after _____ hours

Pay zone depth _____ (ft)
Oil: Initial open flow _____ Bbl/d
Final open flow _____ Bbl/d

Note: ON BACK OF THIS FORM, PUT THE FOLLOWING: 1) DETAILS OF PERFORATED INTERVALS, FRACTURING OR STIMULATING, PHYSICAL CHANGE, ETC. 2) THE WELL LOG WHICH IS A SYSTEMATICK DETAILED GEOLOGICAL RECORD OF ALL FORMATIONS, INCLUDING COAL ENCOUNTERED BY THE WELLBORE.



For: Charles T. Akers
CDX Gas, LLC
By: [Signature]
Date: 10/25/2004

McDowell 1828

Operator: L-2C
 API No. 47- 047-01828C
 Location: McDowell County

Details of Perforated Intervals, Fracturing or Stimulation, Physical Change, Etc. - N/A

Well Log & Geologic Record - Depths from G.L.

Lithology	Depth in feet	
	Top	Bottom
Casing	0	10
Sandstone	10	65
Sandy Shale	65	75
Sandstone	75	95
Sandy Shale	95	140
Shale	140	175
Sandy Shale	175	465
Sandstone	465	470
Sandy Shale	470	478
Sandstone	478	515
Sandy Shale	515	585
Sandstone	585	610
Sandy Shale	610	660
Shale	660	710
Sandy Shale	710	855
Shale	855	862
Sandstone	862	923
Shale	923	960
Sandy Shale	960	980
Shale	980	1067
Coal	1067	1069
Shale	1069	1212
Sandstone	1212	1280
Shale	1280	1340
Sandstone	1340	1380
Sandy Shale	1380	1428
Coal	1428	1431
Shale	1443	1436
Sandy Shale	1436	1475
End		