

AvB

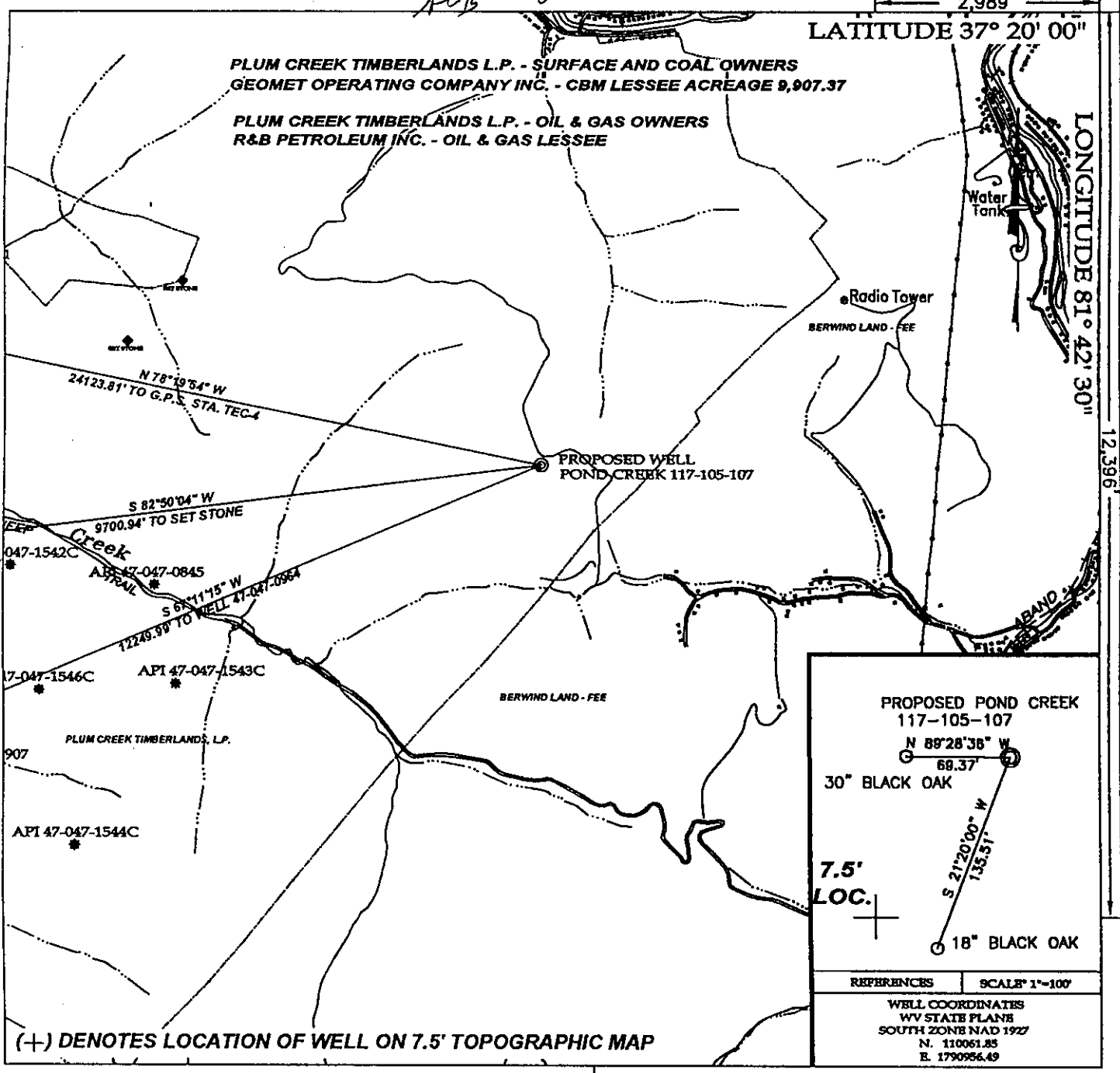
2,989'

LATITUDE 37° 20' 00"

LONGITUDE 81° 42' 30"

PLUM CREEK TIMBERLANDS L.P. - SURFACE AND COAL OWNERS  
GEOMET OPERATING COMPANY INC. - CBM LESSEE ACREAGE 9,907.37

PLUM CREEK TIMBERLANDS L.P. - OIL & GAS OWNERS  
R&B PETROLEUM INC. - OIL & GAS LESSEE



**PROPOSED POND CREEK 117-105-107**

N 88° 28' 38" W  
68.37'

30" BLACK OAK

7.5' LOC.

N 21° 20' 00" W  
155.51'

18" BLACK OAK

REFERENCES	SCALE 1"=100'
WELL COORDINATES WV STATE PLANE SOUTH ZONE NAD 1927 N. 110061.85 E. 1790956.49	

(+) DENOTES LOCATION OF WELL ON 7.5' TOPOGRAPHIC MAP

**TEE Engineering Company, Inc.**  
320 Carrers Hill Court  
Lexington, KY 40509  
(859) 263-5350  
Fax (859) 263-5345

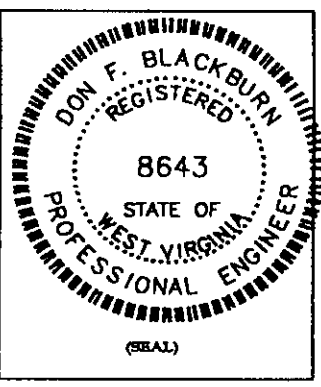
**GeoMet Operating Company, Inc.**  
Well No. Pond Creek 117-105-107

FILE NO. 1883-08/2003 WELLS  
DRAWING NO. POND CREEK 107 PLAT  
SCALE: 1" = 2,000'  
MIN. DEGREE OF ACCURACY 1 : 2,500  
PROVEN SOURCE OF ELEVATION  
GPS STATION TEC-1 (ELEV. 2406.60)

I, THE UNDERSIGNED, HEREBY CERTIFY THAT THIS PLAT IS CORRECT TO THE BEST OF MY KNOWLEDGE AND BELIEF AND SHOWS ALL THE INFORMATION REQUIRED BY LAW AND THE REGULATIONS ISSUED AND PRESCRIBED BY THE DEPARTMENT OF MINES.

*Don F. Blackburn*  
(SIGNATURE)

R.P.E. 8643 R.P.S.



**STATE OF WEST VIRGINIA**  
DEPARTMENT OF ENVIRONMENTAL PROTECTION  
OFFICE OF OIL AND GAS

DATE MAY 20, 2003  
OPERATOR'S WELL NO. POND CREEK 117-105-107

WELL NO. 47 - 047 - 01815C  
STATE COUNTY PERMIT

WELL TYPE: OIL  GAS  CBM  LIQUID INJECTION  WASTE DISPOSAL   
(IF "GAS") PRODUCTION  STORAGE  DEEP  SHALLOW

LOCATION: ELEVATION 2,382.87 NORTHING 110061.85 EASTING 1790956.49  
DISTRICT BIG CREEK WATER SHED LITTLE SLATE CREEK  
QUADRANGLE WAR COUNTY McDOWELL

SURFACE OWNER PLUM CREEK TIMBERLANDS L.P. ACREAGE 9,907.37  
CBM ROYALTY OWNER PLUM CREEK TIMBERLANDS L.P. LEASE ACREAGE 9,907.37  
LEASE NO. RECORDING IN PROGRESS

PROPOSED WORK: DRILL  CONVERT  DRILL DEEPER  REDRILL  FRACTURE OR  
STIMULATE  PLUG OFF OLD FORMATION  PEFORATE NEW  
FORMATION  OTHER PHYSICAL CHANGE IN WELL (SPECIFY) \_\_\_\_\_

PLUG AND ABANDON  CLEAN OUT AND REPLUG

TARGET FORMATION NEW RIVER AND POCAHONTAS COALS ESTIMATED DEPTH 1,630'  
WELL OPERATOR GEOMET OPERATING COMPANY, INC. DESIGNATED AGENT KERRY HILL  
ADDRESS 5336 STADIUM TRACE PARKWAY SUITE 3206 BIRMINGHAM, ALABAMA 35244  
ADDRESS 330 HARPER PARK DRIVE SUITE A BECKLEY, WV 25801

MCDOWELL 1815C

(Bradshaw 270)

JUL 18 2003

2003

State of West Virginia  
Department of Environmental Protection  
Office of Oil and Gas

*pu*

Well Operator's Report of Well Work

FARM NAME: Plum Creek Timberlands OPERATOR WELL NO.: 117-105-107

LOCATION:

Elevation: 2,382.87' Quadrangle: War

District: Big Creek County: McDowell  
Latitude: 2.989 Feet South of 37 Deg. 20 Min. 00 Sec.  
Longitude: 12.396 Feet West of 81 Deg. 42 Min. 30 Sec.

Company: <u>GeoMet Operating Company</u>	Casing & Tubing	Used in Drilling	Left in Well	Cement fill up Cu. Ft.
Address: 5336 Stadium Trace Parkway, Suite 206 Birmingham, Alabama 35244	16"	20.75'	20.75'	
Agent: <u>Gregg Cleary</u>				
Inspector: <u>Ronnie Scott</u>	8-5/8"	1065'	1065'	239/Pumped 240
Date Permit Issued: <u>July 16, 2003</u>				
Date Well Work Commenced: <u>August 22, 2003</u>	11-3/4"	327'	327'	196/Pumped 216
Date Well Work Completed: <u>September 5, 2003</u>				
Verbal Plugging:	5-1/2	2045'	2045'	354/Pumped 390
Date Permission granted on:				
Rotary <u>XXXX</u> Cable Rig				
Total Depth (feet): <u>2068'</u>				
Fresh Water Depth (feet): <u>Unknown</u>				
Salt Water Depth (feet): <u>Unknown</u>				
Is coal being mined in area (N/Y)? <u>No</u>				

Coal Depths (feet): 1096, 1141, 1170, 1181, 1193, 1194, 1198, 1219, 1221, 1251, 1289, 1290, 1312, 1407, 1437, 1468, 1469, 1516, 1517, 1607, 1608, 1609, 1675, 1679, 1681, 1739, 1795, 2063.

OPEN FLOW DATA

Producing formation All Zones Commingled Pay zone depth (ft) \_\_\_\_\_  
Gas: Initial Open Flow N/A MCF/d Oil: Initial Open Flow \_\_\_\_\_ Bbl/d  
Final Open Flow N/A MCF/d Final Open Flow \_\_\_\_\_ Bbl/d  
Time of Open Flow between initial and final tests N/A Hours  
Static Rock Pressure 15 psig (surface pressure) after 96 Hours

NOTE: ON BACK OF THIS FORM PUT THE FOLLOWING: 1). DETAILS OF PERFORATED INTERVALS, FRACTURING OR STIMULATING, PHYSICAL CHANGE, ETC. 2). THE WELL LOG WHICH IS A SYSTEMATIC DETAILED GEOLOGICAL RECORD OF ALL FORMATIONS, INCLUDING COAL ENCOUNTERED BY THE WELLBORE.

SIGNED:

BY: *Dundrea Smith*

DATE: \_\_\_\_\_

NOV 14 2003

MCDOWELL 18150

**GeoMet Operating Company, Inc.**  
**Perforation and Frac Volume Specification**

Well Name Pond Creek 107

PBTD

2068

**Zone and Perforation Table**

Frac			Ball Out	Bridge Plug Set @	Est Sand Weight	Actual Sand Weight
Stage 1 Interval	1793	1796				
N2 Scf	164,000		No Plug		10,000	8,700
Acid	100					
Gel Volume	7,893					
ISIP	3,770					
ATP	3,200					
AIR	17	BPM				
Stage 2 Interval	1,606	1609				
N2 Scf	323,000		No Plug			
Acid	500					
Gel Volume	9,664					
ISIP	950					
ATP	2,500					
AIR	28	BPM				
Stage 3 Interval	1,514	1517				
N2 Scf	263,000		Plug @ 1570'			
Acid	500					
Gel Volume	8,727					
ISIP	1,270					
ATP	2,300					
AIR	28	BPM				
Stage 4 Interval	1,406	1468				
N2 Scf	415,000		Plug @ 1500'			
Acid	1,000					
Gel Volume	14,504					
ISIP	835					
ATP	2,600					
AIR	33	BPM				
Stage 5 Interval	1,228	1252				
N2 Scf	214,000		Plug @ 1330'			
Acid	1,000					
Gel Volume	10,990					
ISIP	615					
ATP	1,750					
AIR	26	BPM				

Well Name Pond Creek 107

PBTD

2068

**Zone and Perforation Table**

	Ball Out	Bridge Plug Set @	Est Sand Weight	Actual Sand Weight
Stage 6 Interval	1,168	1,194		
N2 Scf	231,000		25,000	26,600
Acid	500	15%		
Gel Volume	9,100			
ISIP	630			
ATP	1,800			
AIR	34	BPM		
	No Plug			
Stage 7 Interval	1,139	1,142	20,000	23,300
N2 Scf	181,000			
Acid	500			
Gel Volume	7,695			
ISIP	565			
ATP	1,750			
AIR	34	BPM		
	Plug @ 1150'			
Stage 8 Interval				
N2 Scf				
Acid				
Gel Volume				
ISIP				
ATP				
AIR		BPM		
Stage 9 Interval				
N2 Scf				
Acid				
Gel Volume				
ISIP				
ATP				
AIR		BPM		
Stage 10 Interval				
N2 Scf				
Acid				
Gel Volume				
ISIP				
ATP				
AIR				

**DRILL DATA HOLE - NOAH HORN WELL DRILLING INC**

**COMPANY: GEOMET OPERATING CO**

**HOLE: PC-107**

**LOCATION: BUG HURLEY HOLLOW**

**DRILL: RIG # 23**

**DATE STARTED: 08-21-2003**

**DATE COMPLETED: 08-26-2003**

**ELECTRIC LOGGED: YES**

**GROUTED: YES**

DEPTH		THICKNESS	STRATA	REMARKS
FROM	TO	FT.	DESCRIPTION	VOIDS, ETC
0	20.75	20.75	OVERBURDEN	20.75' W/ 16" CASING
20.75	30	9.25	SANDSTONE	
30	60	30	SANDSTONE / SANDY SHALE	
60	86	26	SANDY SHALE / SANDSTONE	
86	115	29	SANDSTONE / SANDY SHALE	
115	145	30	SANDSTONE / SHALE / COAL STR	
145	175	30	SANDY SHALE / SANDSTONE	
175	235	60	SANDSTONE	
235	265	30	COAL 2 / SANDY SHALE / SANDSTONE	
265	295	30	SANDSTONE	
295	305	10	SANDSTONE / SANDY SHALE	
305	335	30	SANDSTONE	327' W/ 11 3/4" CASING
335	380	45	SANDSTONE	
380	400	20		
400	490	90	SANDSTONE	
490	520	30	SANDSTONE / SANDY SHALE	
520	550	30	SANDY SHALE / SANDSTONE	
550	580	30	SANDSTONE / COAL STR / SANDSTONE	
580	610	30	SANDSTONE / SANDY SHALE	
610	640	30	SANDY SHALE / COAL STR / SANDSTONE	
640	670	30	SANDSTONE	
670	700	30	SANDSTONE / SANDY SHALE	
700	730	30	SANDY SHALE	
730	750	20	SANDSTONE	
750	758	8	SHALE	
758	759	1	COAL	
759	760	1	SANDY SHALE	
760	850	90	SANDSTONE	
850	880	30	SANDY SHALE	
880	890	10	SHALE	
890	893.6	3.6	COAL	
893.6	940	46.4	SANDSTONE	
940	1020	80	SANDY SHALE	
1020	1025	5	COAL BROKE-UP	
1025	1030	5	SHALE	
1030	1065	35	SANDSTONE / SANDY SHALE STR	
1065	1095	30	SANDSTONE	1065' W/ 8 5/8" CASING
1095	1125	30	SANDY SHALE / SANDSTONE	
1125	1155	30	SANDSTONE / SANDY SHALE	
1155	1185	30	SANDSTONE / COAL 2 / SANDSTONE	

PAGE 2  
 GEOMET OPERATING COMPANY  
 PC-107

FROM	TO	FT.	DESCRIPTION
1185	1215	30	SANDSTONE / COAL 2 / SANDY SHALE
1215	1245	30	COAL STR / SANDSTONE / COAL STR
1245	1275	30	SANDSTONE / SANDY SHALE
1275	1305	30	SANDSTONE
1305	1335	30	SANDSTONE / COAL STR / SANDY SHALE
1335	1365	30	SANDY SHALE / SANDSTONE
1365	1395	30	SANDSTONE
1395	1425	30	SANDSTONE / SANDY SHALE
1425	1455	30	SAND / SANDSTONE
1455	1485	30	COAL 3 / SANDSTONE
1485	1515	30	SANDSTONE / COAL STR
1515	1545	30	CAOL STR / SAND / SANDSTONE
1545	1575	30	SAND / SANDSTONE / COAL STR
1575	1605	30	SANDSTONE
1605	1635	30	SANDSTONE / SANDY SHALE
1635	1665	30	SANDSTONE / SAND / COAL STR
1665	1695	30	COAL STR / SANDSTONE
1695	1725	30	SANDSTONE / SAND / SANDSTONE
1725	1755	30	SANDSTONE / COAL STR / SANDSTONE
1755	1785	30	SANDSTONE / COAL 3
1785	1815	30	SANDSTONE / SANDY SHALE
1815	1845	30	SANDY SHALE / SANDSTONE
1845	1875	30	SANDSTONE / SANDY SHALE
1875	1905	30	SANDY SHALE / SANDSTONE
1905	1935	30	SANDSTONE
1935	1965	30	SANDY SHALE
1965	2000	35	RED SHALE
2000	2015	15	SHALE
2015	2045.98	30.98	TD 8" HOLE 2045.98' W/ 5 1/2" CASING

2045.98 FT. TOTAL DEPTH  
 20.75 FT. OF 16" CASING  
 326.30 FT. OF 11 3/4" CASING  
 1065.50 FT. OF 8 5/8" CASING  
 2045.98 FT. OF 5 1/2" CASING