

WW-7  
8-30-06



West Virginia Department of Environmental Protection  
Office of Oil and Gas  
**WELL LOCATION FORM: GPS**

API: 47-047-01789 WELL NO.: 6275

FARM NAME: Mega Minerals Inc

RESPONSIBLE PARTY NAME: Diversified Production LLC

COUNTY: McDowell DISTRICT: Elkhorn

QUADRANGLE: Keystone

SURFACE OWNER: Cleveland Cliffs Inc

ROYALTY OWNER: Diversified Production LLC

UTM GPS NORTHING: 4,137,570.16

UTM GPS EASTING: 462,513.9 GPS ELEVATION: 755.5 m. (2476')

RECEIVED  
Office of Oil and Gas

APR 26 2021

WV Department of  
Environmental Protection

The Responsible Party named above has chosen to submit GPS coordinates in lieu of preparing a new well location plat for a plugging permit or assigned API number on the above well. The Office of Oil and Gas will not accept GPS coordinates that do not meet the following requirements:

1. Datum: NAD 1983, Zone: 17 North, Coordinate Units: meters, Altitude: height above mean sea level (MSL) – meters.
2. Accuracy to Datum – 3.05 meters
3. Data Collection Method:

Survey grade GPS \_\_\_\_\_: Post Processed Differential \_\_\_\_\_

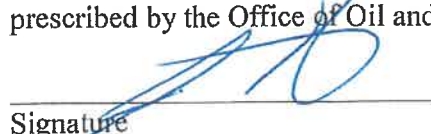
Real-Time Differential \_\_\_\_\_

Mapping Grade GPS X: Post Processed Differential X

Real-Time Differential \_\_\_\_\_

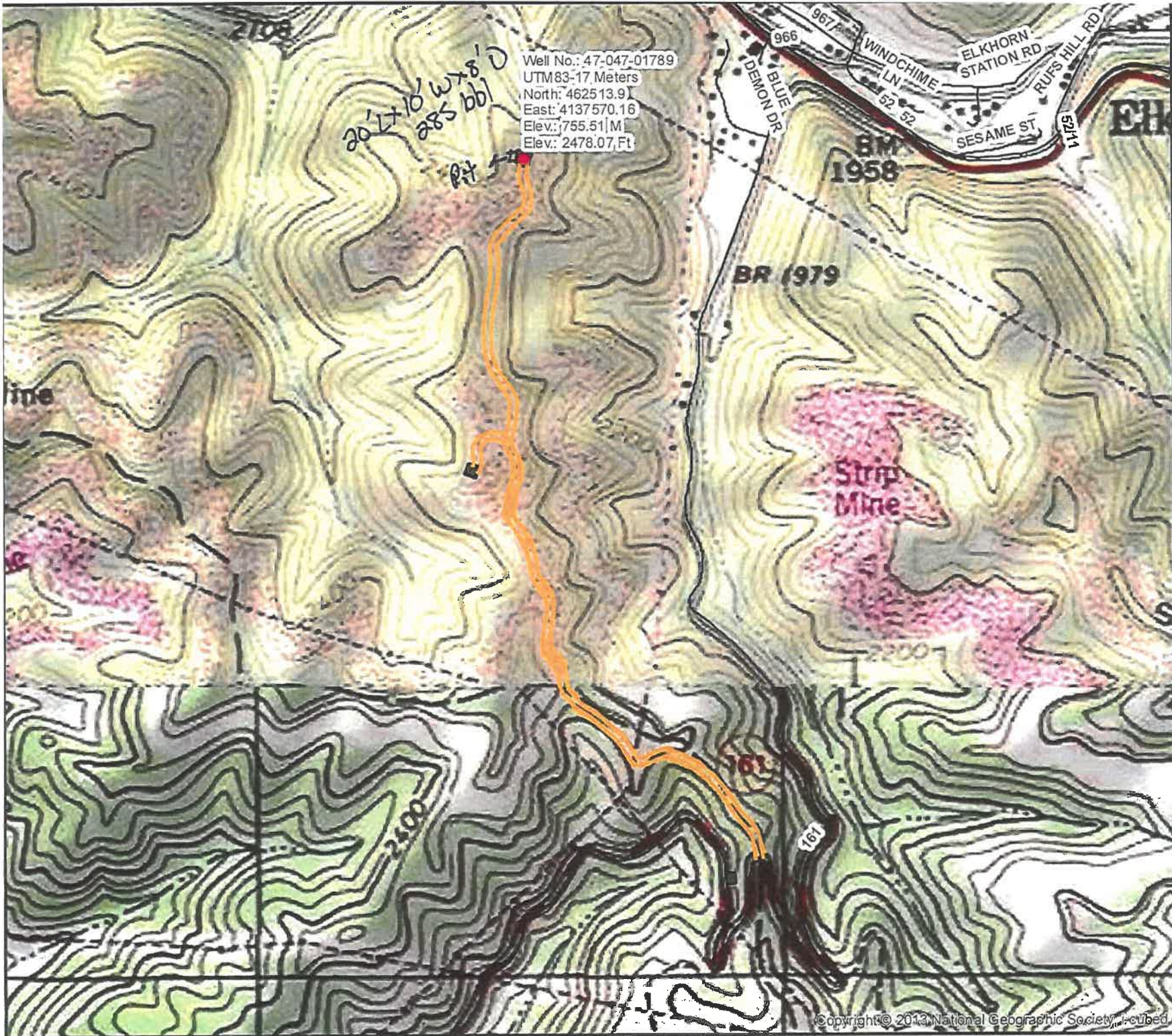
4. Letter size copy of the topography map showing the well location.

I the undersigned, hereby certify this data is correct to the best of my knowledge and belief and shows all the information required by law and the regulations issued and prescribed by the Office of Oil and Gas.

  
Signature

Director Production  
Title

04/13/2020  
Date



Diversified Gas & Oil Corporation  
 100 Diversified Way  
 Pikeville KY, 41051

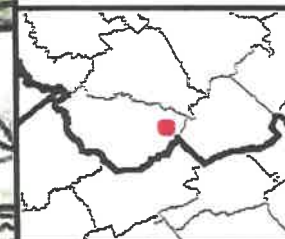
47-047-01789

Plugging Map

**Legend**

- Well
- Access Road
- Pits
- Pad
- Public Roads

4704701789



1" = 800'

