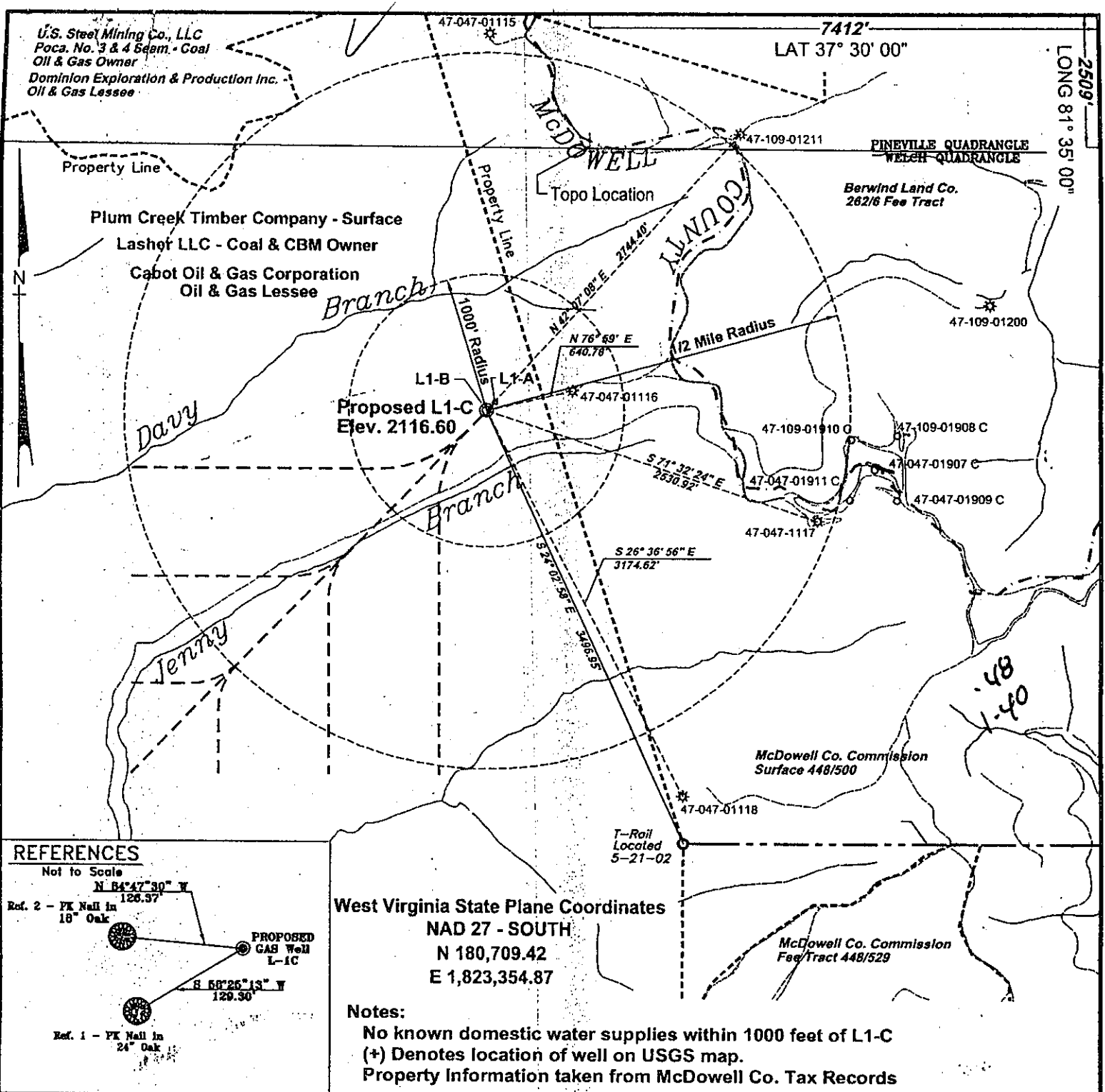


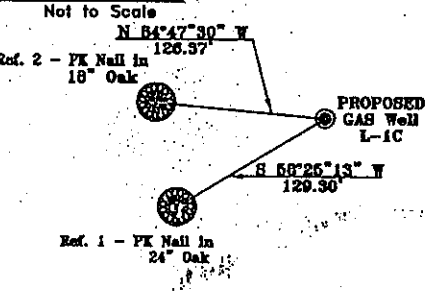
U.S. Steel Mining Co., LLC
 Poca. No. 3 & 4 Seam - Coal
 Oil & Gas Owner
 Dominion Exploration & Production Inc.
 Oil & Gas Lessee

7412'
 LAT 37° 30' 00"

2509'
 LONG 81° 35' 00"



REFERENCES



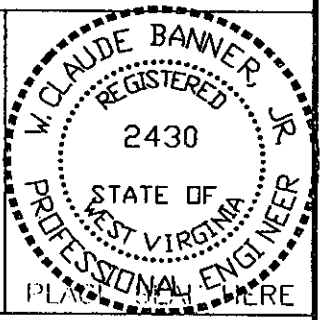
West Virginia State Plane Coordinates
 NAD 27 - SOUTH
 N 180,709.42
 E 1,823,354.87

Notes:
 No known domestic water supplies within 1000 feet of L1-C
 (+) Denotes location of well on USGS map.
 Property Information taken from McDowell Co. Tax Records

FILE No. Cdx-2002
 DIRECTORY C:\Cdx-2002\L-1Wells
 Drawing Number Platl-1C
 SCALE 1" = 1000'
 MINIMUM DEGREE OF ACCURACY 1 : 2500
 PROVEN SOURCE OF ELEVATION GPS - GLOBAL POSITIONING SYSTEM

I THE UNDERSIGNED, HEREBY CERTIFY THAT THIS PLAT IS CORRECT TO THE BEST OF MY KNOWLEDGE AND BELIEF AND SHOWS ALL THE INFORMATION REQUIRED BY LAW AND THE REGULATIONS ISSUED AND PRESCRIBED BY THE DEPARTMENT OF MINES.

(SIGNED) W. Claude Banner, Jr.
 R.P.E. 2430 R.P.S.



**STATE OF WEST VIRGINIA
 DIVISION OF ENVIRONMENTAL PROTECTION
 OFFICE OF OIL AND GAS
 CHARLESTON, WV**

DATE JUNE 26, 2002
 OPERATOR'S WELL No. L-1C
 API WELL No. _____
47 - 047 - 01688C
 STATE COUNTY *PERMIT

WELL TYPE: OIL GAS CBM LIQUID INJECTION WASTE DISPOSAL
 (IF "GAS") PRODUCTION X STORAGE DEEP SHALLOW
 LOCATION: ELEVATION 2116.60 WATER SHED DAVY BRANCH/JENNY BRANCH OF TUG FORK
 DISTRICT BROWNS CREEK COUNTY McDOWELL
 QUADRANGLE WELCH, WV

SURFACE OWNER PLUM CREEK TIMBER COMPANY ACREAGE _____
 CBM ROYALTY OWNER LASHER, LLC LEASE ACREAGE _____

LEASE No. _____
 PROPOSED WORK: DRILL X CONVERT DRILL DEEPER REDRILL FRACTURE OR STIMULATE PLUG OFF OLD FORMATION PERFORATE NEW FORMATION OTHER PHYSICAL CHANGE IN WELL (SPECIFY) _____

PLUG AND ABANDON _____ CLEAN OUT AND REPLUG _____
 TARGET FORMATION POCAHONTAS NO. 3 & PENN. COALS ESTIMATED DEPTH 1374'
 WELL OPERATOR CDX GAS, LLC DESIGNATED AGENT JOE ZUPANICK
 ADDRESS P.O. BOX 609 ADDRESS P.O. BOX 609
PINEVILLE, WV 24874 PINEVILLE, WV 24874

AUG 2 2002

Baileysville 272

McDow 1688C

State of West Virginia
Division of Environmental Protection
Section of Oil & Gas

AP 79

Well Operator's Report of Well Work

Farm name: Pocahontas Land Corp.

Operator Well No: L-1C

Location: Elevation: 2116.90

Quadrangle: Welch

District: Browns Creek

County: McDowell

Latitude: 7412 Feet South of 37 Deg. 30 Min. 00 Sec.
Longitude: 2509 Feet West of 81 Deg. 35 Min. 00 Sec.

Company: CDX Gas, LLC
P.O. Box 609
Pineville, WV 24874

Office of Oil & Gas
Permitting
SEP 03 2003
WV Department of
Environmental Protection

Agent: JOSEPH A. ZUPANICK

Inspector: Ronnie Scott
Permit Issued: 6/29/02
Well Work commenced: 4/13/02
Well Work completed: 7/1/03
Verbal plugging
Permission granted on:
Rotary x Cable _____ Rig
Total depth (ft) 1467 TVD
Fresh water depths (ft) N/A
Salt water depths (ft) N/A
Is coal being mined in the area (Y/N)? Y
Coal depths (ft): 970, 1018, 1273, 1275, 1362, 1421, 1453

Casing & Tubing Size	Used in Drilling	Left in Well	Cement Fill up
13 3/8"	35'	35'	24cuft
9 5/8"	259'	259'	81cuft
7"	1239'	1239'	186cuft
2 7/8"	1443'	1443'	Hanging

OPEN FLOW DATA

Producing formation Pocahontas No.3 seam
Gas: Initial open flow N/A Mcf/d
Final open flow N/A Mcf/d
Time of open flow between initial and final tests: _____ hours
Static rock pressure _____ psig (surface pressure) after _____ hours
Pay zone depth 1421(ft)
Oil: Initial open flow _____ Bbl/d
Final open flow _____ Bbl/d

Second Producing formation Pocahontas No.4
Gas: Initial open flow _____ Mcf/d
Final open flow _____ Mcf/d
Time of open flow between initial and final tests: _____ hours
Static rock pressure _____ psig (surface pressure) after _____ hours
Pay zone depth 1362(ft)
Oil: Initial open flow _____ Bbl/d
Final open flow _____ Bbl/d

Note: ON BACK OF THIS FORM, PUT THE FOLLOWING: 1) DETAILS OF PERFORATED INTERVALS, FRACTURING OR STIMULATING, PHYSICAL CHANGE, ETC. 2) THE WELL LOG WHICH IS A SYSTEMATICK DETAILED GEOLOGICAL RECORD OF ALL FORMATIONS, INCLUDING COAL ENCOUNTERED BY THE WELLBORE.

For: Steven Pauley
CDX Gas, LLC
By: Steven Pauley
Date: _____

Mc Dow 1026

Operator: L-1C
 API No. 47- 047-01688 C
 Location: McDowell County

Details of Perforated Intervals, Fracturing or Stimulation, Physical Change, Etc. – N/A

Well Log & Geologic Record - Depths from K.B.

Lithology	Depth in feet	
	Top	Bottom
Sandstone	0.00	277
Shale	277	394
Siltstone	394	458
Sandstone	458	507
Shale	507	554
Sandstone	554	580
Shale	580	626
Siltstone	626	634
Sandstone	634	717
Shale	717	724
Sandstone	724	753
Shale	753	768
Siltstone	768	778
Sandstone	778	863
Shale	863	944
Siltstone	944	961
Shale	961	970
Coal	970	971
Shale	971	1018
Coal	1018	1020
Shale	1020	1134
Siltstone	1134	1161
Sandstone	1161	1273
Coal	1273	1274
Shale	1274	1275
Coal	1275	1276
Shale	1276	1290
Siltstone	1290	1313
Shale	1313	1321
Siltstone	1321	1329
Shale	1329	1338
Siltstone	1338	1357
Shale	1357	1362
Coal	1362	1366
Shale	1366	1403
Siltstone	1403	1414
Shale	1414	1421
Coal and Shale	1421	1426
Shale	1426	1442
Coal and Shale	1442	1445
Shale	1445	1452
Coal	1452	1453
Sandstone	1453	1467
End of Hole		

