

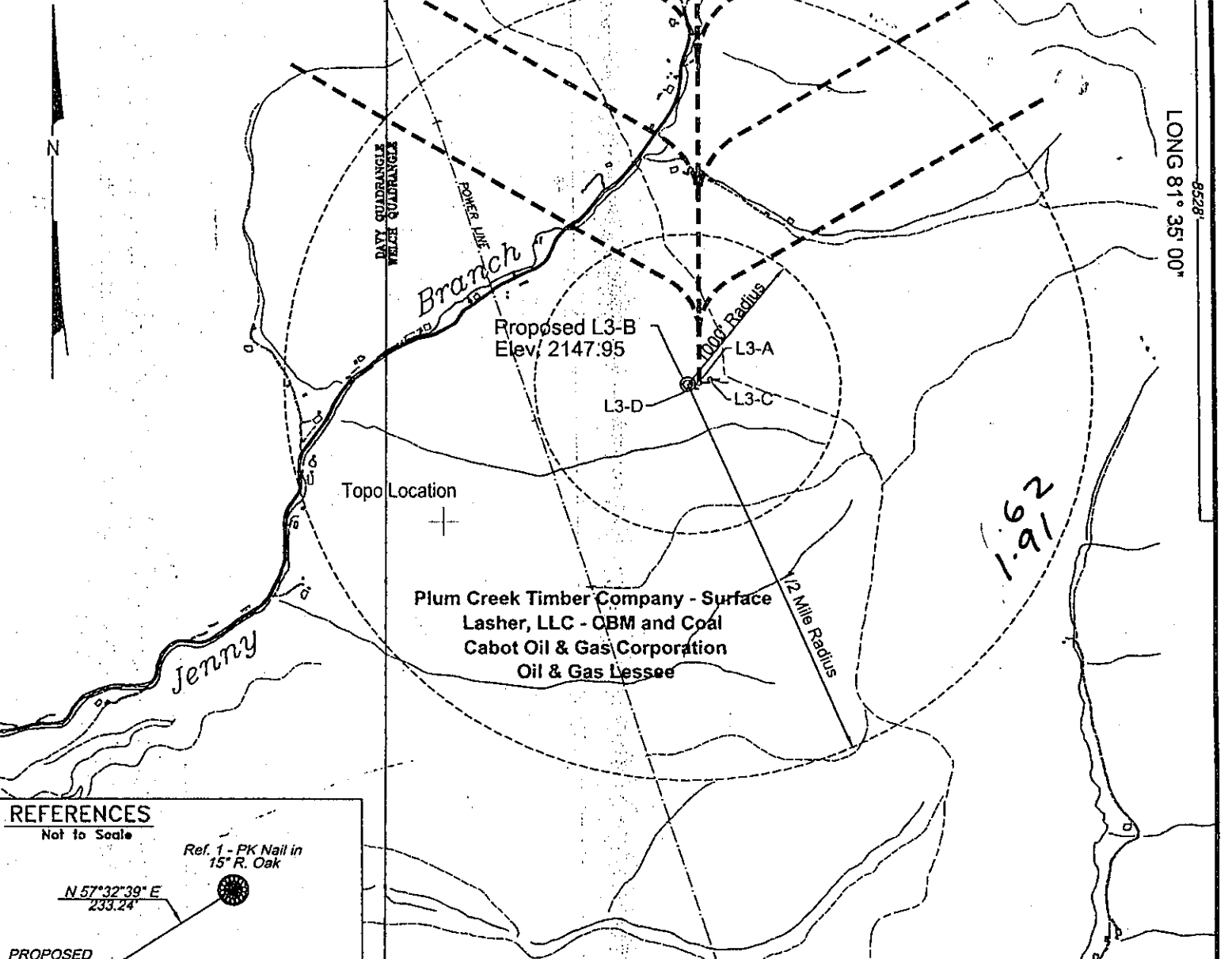
West Virginia State Plane Coordinates  
 NAD 27 - SOUTH  
 N 174,101.81  
 E 1,820,593.95

10078'

LAT 37° 30' 00"

LONG 81° 35' 00"

9528'



**REFERENCES**  
 Not to Scale

Ref. 1 - PK Nail in 15" R. Oak  
 N 57° 32' 39" E  
 233.24'

PROPOSED GAS Well L-3B

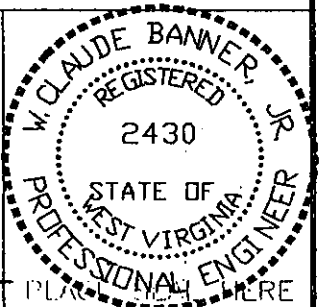
Ref. 2 - PK Nail in 12" Hickory  
 N 89° 37' 43" E  
 266.73'

**Notes:**  
 No known domestic water supplies within 1000 feet of L3-B  
 (+) Denotes location of well on USGS map.  
 Property Information taken from McDowell Co. Tax Records

FILE No. Cdx-2002  
 DIRECTORY C:\Cdx-2002\L-3Wells  
 Drawing Number 1-3B  
 SCALE 1" = 1000'  
 MINIMUM DEGREE OF ACCURACY 1 : 2500  
 PROVEN SOURCE OF ELEVATION GPS - GLOBAL POSITIONING SYSTEM

I THE UNDERSIGNED, HEREBY CERTIFY THAT THIS PLAT IS CORRECT TO THE BEST OF MY KNOWLEDGE AND BELIEF AND SHOWS ALL THE INFORMATION REQUIRED BY LAW AND THE REGULATIONS ISSUED AND PRESCRIBED BY THE DEPARTMENT OF MINES.

(SIGNED) W. Claude Banner, Jr.  
 R.P.E. 2430 R.P.S.



**STATE OF WEST VIRGINIA**  
**DIVISION OF ENVIRONMENTAL PROTECTION**  
**OFFICE OF OIL AND GAS**  
**CHARLESTON, WV**

DATE JUNE 26, 2002  
 OPERATOR'S WELL No. L-3B  
 API WELL No. 47 - 047 - 01683C  
 STATE COUNTY PERMIT

WELL TYPE: OIL GAS CBM LIQUID INJECTION WASTE DISPOSAL  
 (IF "GAS") PRODUCTION X STORAGE DEEP SHALLOW

LOCATION: ELEVATION 2147.95 WATER SHED UNNAMED TRIBUTARY OF JENNY BRANCH OF TUG FORK  
 DISTRICT BROWNS CREEK COUNTY McDOWELL  
 QUADRANGLE WELCH, WV

SURFACE OWNER PLUM CREEK TIMBER COMAPNY ACREAGE 3762.00  
 CBM ROYALTY OWNER LASHER, LLC LEASE ACREAGE \_\_\_\_\_

LEASE No. \_\_\_\_\_

PROPOSED WORK: DRILL X CONVERT DRILL DEEPER REDRILL FRACTURE OR STIMULATE PLUG OFF OLD FORMATION PERFORATE NEW FORMATION OTHER PHYSICAL CHANGE IN WELL (SPECIFY) \_\_\_\_\_

PLUG AND ABANDON \_\_\_\_\_ CLEAN OUT AND REPLUG \_\_\_\_\_

TARGET FORMATION POCAHONTAS NO. 3 & PENN. COALS ESTIMATED DEPTH 1370'  
 WELL OPERATOR CDX GAS, LLC DESIGNATED AGENT JOSEPH ZUPANICK  
 ADDRESS P.O. BOX 609 ADDRESS P.O. BOX 609  
PINEVILLE, WV 24874 PINEVILLE, WV 24874

AUG 2 2002

horizontal well

McDow 1683 C

6-6603 CBM

*12/17*

State of West Virginia  
Division of Environmental Protection  
Section of Oil & Gas

Well Operator's Report of Well Work

Farm name: Plum Creek Timber Co.

Operator Well No: L-3B

Location: Elevation: 2084.03'

Quadrangle: Welch

District: Browns Creek

County: McDowell

Latitude: 8528' Feet South of 37 Deg. 30 Min. 00 Sec.  
Longitude: 10076' Feet West of 81 Deg. 35 Min. 00 Sec.

Company: CDX Gas, LLC  
P.O. Box 609  
Pineville, WV 24874

Agent: JOSEPH A. ZUPANICK

Inspector: Ronnie Scott  
Permit Issued: 7/29/02  
Well Work commenced: 10/26/03  
Well Work completed: 12/9/03  
Verbal plugging  
Permission granted on:  
Rotary x Cable \_\_\_\_\_ Rig  
Total depth (ft) 1380'  
Fresh water depths (ft) N/A  
Salt water depths (ft) N/A  
Is coal being mined in the area (Y/N)? Y  
Coal depths (ft): 550, 627, 697, 1107, 1173.

Casing & Tubing Size	Used in Drilling	Left in Well	Cement Fill up (cuft.)
13 3/8"	28'	28'	19.5
9 5/8"	220'	220'	69
7"	1233'	1233'	185
2 7/8"	1395'	1395'	Hanging

OPEN FLOW DATA

Producing formation Pocahontas No. 3

Pay zone depth 1336'(ft)

Gas: Initial open flow N/A Mcf/d  
Final open flow N/A Mcf/d

Oil: Initial open flow \_\_\_\_\_ Bbl/d  
Final open flow \_\_\_\_\_ Bbl/d

Time of open flow between initial and final tests: \_\_\_\_\_ hours

Static rock pressure \_\_\_\_\_ psig (surface pressure) after \_\_\_\_\_ hours

Second Producing formation \_\_\_\_\_

Pay zone depth (ft) \_\_\_\_\_

Gas: Initial open flow \_\_\_\_\_ Mcf/d  
Final open flow \_\_\_\_\_ Mcf/d

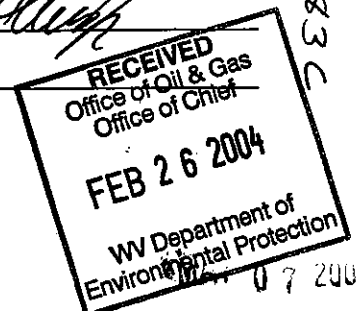
Oil: Initial open flow \_\_\_\_\_ Bbl/d  
Final open flow \_\_\_\_\_ Bbl/d

Time of open flow between initial and final tests: \_\_\_\_\_ hours

Static rock pressure \_\_\_\_\_ psig (surface pressure) after \_\_\_\_\_ hours

Note: ON BACK OF THIS FORM, PUT THE FOLLOWING: 1) DETAILS OF PERFORATED INTERVALS, FRACTURING OR STIMULATING, PHYSICAL CHANGE, ETC. 2) THE WELL LOG WHICH IS A SYSTEMATICK DETAILED GEOLOGICAL RECORD OF ALL FORMATIONS, INCLUDING COAL ENCOUNTERED BY THE WELLBORE.

For: Charles Akers Jr.  
CDX Gas, LLC  
By: *Charles Akers Jr.*  
Date: 2/24/04



*McDow 1683 C*

*07 2004*

Operator: L-3B  
API No. 47- 047-01683 C  
Location: McDowell County

Details of Perforated Intervals, Fracturing or Stimulation, Physical Change, Etc.

N/A

Well Log & Geologic Record - Depths from G.L.

Formation	Top	Bottom
Casing	0	30
Sandy Shale	30	124
Shale	124	150
Sandstone	150	184
Sandy Shale	184	255
Shale	255	304
Sandy Shale	304	340
Shale	340	400
Sandy Shale	400	466
Shale	466	515
Sandy Shale	515	535
Shale	535	550
Coal	550	552
Shale	552	565
Sandy Shale	565	615
Shale	615	627
Coal	627	628
Shale	628	632
Sandy Shale	632	692
Shale	692	697
Coal	697	698
Shale	698	708
Sandstone	708	810
Sandy Shale	810	828
Sandstone	828	876
Sandy Shale	876	899
Shale	899	958
Sandy Shale	958	1084
Sandstone	1084	1107
Coal	1107	1108
Shale	1108	1118
Sandstone	1118	1135
Sandy Shale	1135	1143
Shale	1143	1173
Coal	1173	1174
Sandy Shale	1174	1233
Shale	1233	1247
Sandy Shale	1247	1300
Shale	1300	1336
Coal	1336	1340
Shale	1340	1380
TD	1380	